



CONGREGATION  
Beth Ami

4676 MAYETTE AVENUE, SANTA ROSA, CALIFORNIA 95405

*Shofar*

707-360-3000

DECEMBER 2013/JANUARY 2014

5774

RELIGIOUS SCHOOL  
FUNdraiser  
DINE & DONATE



*Dine & Donate*

Please join Mary's Pizza Shack in supporting  
**BETH AMI RELIGIOUS SCHOOL**  
at a Dine & Donate Fundraiser on  
**MONDAY, DECEMBER 9<sup>TH</sup>, 2013!**

Bring this flyer to the Mary's Pizza Shack in  
Santa Rosa on Summerfield Road and support the  
Beth Ami Religious School! Twenty percent of  
your purchase will be donated to the school when  
you present this flyer with your order.

**Mary's Pizza Shack serves homemade pizzas, pastas,  
sandwiches, salads & soups perfect for the whole family.**

**Mary's will donate 20% of Dine-In, Take-Out & Delivery orders, all day.  
Don't have time to stay? Mary's will donate 10% of gift card purchases on the event date.**

Sorry, no coupons, discounts or Mary's Money will be accepted for payment with this fundraiser. A 10% donation will be given for gift cards purchased on the event date; a 20% donation will be given for purchases made with a gift card, but the same card cannot be used in both transactions. This flyer cannot be distributed at the restaurant or in the vicinity. This flyer must be presented in order for the organization to receive the donation. Valid only for the date and location(s) specified.

535 Summerfield Road, Santa Rosa • (707) 538-1888  
[maryspizzashack.com](http://maryspizzashack.com)

## Congregation Beth Ami

4676 Mayette Avenue  
Santa Rosa, CA 95405

**Telephone:** 707/360-3000

**Fax:** 707/360-3003

**Email:** office@BethAmiSR.org

**Website:** www.BethAmiSR.org



Please "like" us at

[facebook.com/CongregationBethAmi](https://facebook.com/CongregationBethAmi)

## Office, Library, and Gift Shop Hours

Mon.–Thurs. 10 a.m.–4 p.m.

Fri. 10 a.m.–2 p.m.

## Mission Statement

Congregation Beth Ami enriches our lives, transforms our hearts, helps heal the world and sustains our Jewish heritage. We are deeply rooted in Jewish tradition and welcome all to our community through celebration, learning, education, and prayer.

## Personnel

### Rabbi Mordecai Miller

314-308-3672  
chaver37@gmail.com

### Carolyn Metz, Executive Director

707-360-3011  
execdirec@bethamistr.org

### Elizabeth Jarlsberg, Office Manager

707-360-3000  
office@bethamistr.org

### Diane Lennox, Bookkeeper

bookkeeper@bethamistr.org

### Caroline Calvert and Robyn Fisher-Tachouet, Nursery School Co-Directors

707-360-3030  
ns@bethamistr.org

### Jennifer Hayes, NS Assistant

707-360-3030  
ns@bethamistr.org

### Rick Concoff, JCC Teen Program

707-823-3916  
rickc@jccsoco.org

### Ben and Tara Winkler, Shofar Newsletter

707-695-0711  
newsletter@bethamistr.org

### Pnina Loeb, RS Director

707-360-3000  
rs@bethamistr.org

### Gabor Por, Librarian

707-360-3006  
library@bethamistr.org

### Bonnie Boren, Gift Shop

707-360-3022

### Andrea Nett, Friedman Center Director

707-360-3021  
director@friedmaneventcenter.com

### Edythe Smith, Invitations

707-538-3698

## Officers and Board of Directors, 2012–13

### Arnold Drake, President

gidrdrake@gmail.com, 542-1765

### Barbara McGee, Treasurer

barbara.mcgee@ffic.com, 953-2526

### Betty Boyd, Secretary

bettyboyd@informingscience.org,  
537-2211

### David Ballo, Past President

klezhead@yahoo.com, 576-0612

### Irvin Klein, VP of Administration

707-695-0711

### Russ Gurevitch, VP of Facilities

russgurev@msn.com

### Barbara Tomin, VP of Youth & Education

btomin@sonic.net, 576-1167

### VP of Ways and Means, (currently open)

## Members at Large

### Mel Decker

meldecker5@gmail.com, 540-0614

### Richard Kahn

earthin@sonic.net, 217-5265

### Alan Krubiner

akrubiner@msn.com, 694-6239

### Tamar Landau

landrillo2@yahoo.com, 228-0303

### Myrna Morse

mrm75@att.net, 539-5457

### Lyla Nathan

llylalya2@yahoo.com, 526-7438

### Leanne Schy, Torah/Haftarah Readings

leanne@sonic.net, 528-4874

### Mark Sutter

drmarksutter@vom.com, 935-7737

## Members Ex Officio

Carolyn Metz, 481-3390

Caroline Calvert, 322-7216

Pnina Loeb, 695-2275

Rabbi Miller, (314) 308-3672

Robyn Fisher-Tachouet, 484-8553

Andrea Nett, 707-360-3021

---

## Deadline for February/March 2014 Shofar is January 15

---

## New Mission Statement

Congregation Beth Ami has a new mission statement! Check it out in the blue banner above

Ben and I would like to extend a special thanks to all of you for making us feel welcome at Congregation Beth Ami. We appreciate all our old friends and acquaintances, as well as all the new friends we are making. You are truly a wonderful community.

We trust you had a happy, healthy Thanksgiving!

—Tara and Ben Winkler



## RABBI'S REMARKS

Rabbi Mordecai Miller

### A Living Sanctuary

For most of us, the notion of the Temple with animal sacrifices would seem, at best, primitive and, at worst, barbaric.

Personal feelings aside, a brief study of sources in the Torah (e.g. Leviticus), Mishnah, Talmud and other rabbinic writing leaves one with the strong impression that the Temple, Sacrificial system and related concepts represent an essential element in the original religion of Israel.

The practice of religion is the search to discover meaning despite our brief sojourn in this world. Consequently, a major factor, which gives our lives a sense of value, is the way religious practice allows us to link ourselves to past generations. We do this in re-discovering their stories through the Bible and practicing of the commandments—the mitzvot.

The stories give us insights into the human element; how to recognize behaviors that promote our welfare or lead to self-destruction. They also attempt to give us a perspective in which we can see the hand of our Divine Creator at work behind the turn of events. This can provide us with a sense of ultimate hope, despite our mortal struggle for existence.

Practicing the mitzvot represents a deep human response to our belief in an Ultimate Author of the Universe. This system of Divine Commandments is predicated on an assumption that, despite the brevity of our individual lives, the specific details of our daily experience have significance. For example, making a blessing—a b'racha—before eating, trains us to acknowledge the Ultimate Creator of that food; transforming that common act into an affirmation of our Creator's presence.

But how do we take these elements and bring them to bear on those practices that took place in the Temple? What relevance can those

ancient rites have on our present-day lives?

Our early sages were only too aware of this puzzle. They developed a system of daily formal prayer that would reflect the offerings brought in the Temple.

The Torah itself may be silent on the subject

of significance. It devotes itself to the how and not on the why (compare the question of the wise son in the Hagaddah). Yet, in studying and interpreting these passages, the Malbim, (Rabbi Meir Leibush, 1809–1879) shows how the

configuration of the Mishkan (the Tabernacle that the Israelites erected and carried with them during their journey in the wilderness), and subsequently Solomon's Temple, can be seen to represent human anatomy!

Specifically, the Holy of Holies represents the cranial cavity; the remaining parts of the Tent of Meeting represent the remaining parts of the face (with furniture accounting for our sense of sight, smell, taste and the bells on the edge of the priestly garments representing our auditory sense). Outside the Tent of Meeting, the altar, on which the sacrifices were burnt off, represents the human digestive tract.

This suggests that every human being has the potential of becoming a human Mishkan or Temple! The services performed in the Mishkan, which had to be executed with great care, represent the way in which to conduct our lives. These services were intended to serve as a way to acknowledge God and serve as a conduit to the Divine Presence. It was a place where God's Presence could be tangibly felt.

Likewise, when a person conducts their lives in a similar way they are capable of bringing the Presence of God into this world!

May you and the ones you love be blessed with such an experience!

**“Where is God to be found? Wherever one allows God to enter.”**

*Menahem Mendel of Kotzk—The Kotzker rebbe*





## EVENTS & ANNOUNCEMENTS

### New Members

Cate Thomas—578-3377,  
catethomas3@yahoo.com

Bob & Charli Silverman—570-2121,  
sloboat65@aol.com

Lee Mehlman—293-9587, leelee83@gmail.com

Rick Goldberg—494-5115, rickg@wildbrine.com

### Births

Maddelyn Rose Metz, granddaughter of Carolyn Metz and great granddaughter of Florence Metz

### Deaths

John Metz, son of Florence Metz and former husband of Carolyn Metz

Benjamin Weiss, grandson of Mort & Ruth Weiss

Mitchell Boyd, father of Betty Boyd

Eileen Cohen, sister-in-law of Betty Boyd & Eli Cohen

### Misheberach

Mazie Miller, Betty Kale, Al Batzdorff, Susanne Batzdorff—for a refuah shlaimah

### Directory Updates

Raphael & Sarah Kauffman  
402 Benton St., Santa Rosa, CA 95401  
(707) 568-3640  
raphael\_kauffman@yahoo.com

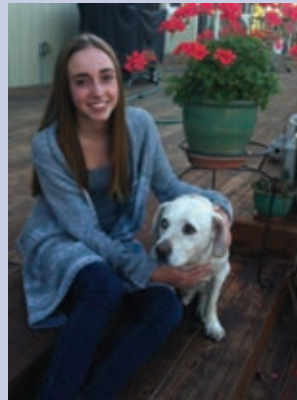
Ira & Ruth Rosenberg  
719 Sequoia St., Windsor, CA 95492  
(707) 331-0868

### Thank You!

Esther Pilch would like to thank all her friends who came to be with her and who showed so much attention during this very difficult time in her life. She would like to thank you for all your prayers, presents, letters, and contributions. And again, thank you for your kindness and support with her husband's passing.

### Mazal Tov to our Bat Mitzvah, Mira Wegman

Jan. 11, 2014—Shabbat Beshalach



My name is Mira Wegman. I will become a Bat Mitzvah on January 11, 2014. My Torah portion is Beshalach which is from Exodus—the story of the Israelites leaving Egypt. I enjoy participating in the 13th Tribe

and Chaverim. When I'm not studying, I enjoy playing piano which I have done for six years. I am in student leadership at Slater Middle School where I'm on the volleyball and track teams. I also play on an indoor soccer team. I don't have much down time, but when I do I like to hang out with my best friends who live next door. I want to express my appreciation to Rabbi Miller for helping me understand this parsha, and to my father for helping me prepare for my Bat Mizvah. I hope you will be able to join us for this special day on January 11th.

### Israeli Folk Dance— 2 Wednesdays a Month

Come dance circle dances to songs from Israel, and other places too—with varied speeds, moods and styles. We like varied styles of people too. Just drop in and dance.

For the December/January dance schedule, see the calendar at BethAmiSR.org, or contact Leanne at Leanne@sonic.net or 707-528-4874.





## EVENTS & ANNOUNCEMENTS

### Dine and Donate

The Religious School would like to invite you to participate in Dine and Donate on Monday, December 9th at Mary's Pizza Shack on Summerfield Road. Please come show your support for our Religious School. Remember to bring a flyer in order for 20% of your meal and 10% of your gift card purchases to be donated to the Religious School. Please contact Laura Alexander at 292-3261 or cheerful@sonic.net for any questions. We hope to see you there!

### Are You In?

*Want To Make New Friends?  
Or Strengthen Old Ties?*

Whether you have been a member of Beth



Ami for years or you have just joined us—belonging to a chavurah gives members a sense of community and extended family.

Some groups meet for Friday night and holiday dinners, others for social events, theater, hikes, and potlucks. Each group decides its activities. Imagine a needlework chavurah, an exercise chavurah, or a football-watching chavurah. Chavurah members are Beth Ami members. If you've been considering joining, now is the perfect time.

Come check us out. New chavurot are forming. There's one for you! Please let the office know if you're interested.

**office@BethAmiSR.org • (707)360-3000**

### Save The Date

*Halayla Hagadol (The Big Night)*  
**Saturday, February 1, 2014**

A fun-filled evening, sumptuous meals, congregants' homes, raising shekels for Beth Ami—what's not to love? Details to follow.

### Caring Community: Be Part of It *Do a Mitzvah!*

#### Ready to join the Merry Band of Mitzvah Makers?

Some members are coping with illness or recovering from surgery; others are homebound. They would welcome your calls, cards, and visits. Others would love a ride to Beth Ami services or events. Some of you may be in both categories: able to make some calls, and in need of some support yourselves.

Please get in touch with Lee Mehlman and tell her what you're able to do: pay visits, make calls, send cards, or offer rides to members in need of support. You can reach Lee at 293-9587 or email her at LeeLeeM83@gmail.com.

Someone you know needs a friend. It could be you. If you are in need of support, please have someone let the office know. We want to help and can only do so if we know.



**Carolyn Metz**  
*Ecogreen Certified Agent*  
DRE # 01488014  
707-537-2369 - Direct  
707-481-3390 - Cell  
cmetz@fhallen.com  
www.carolynmetz.com



460 Mission Blvd., Santa Rosa, CA 95409



**Wine Country Kosher**  
*...still trendy after 3000 years*

**MODERN • GOURMET • KOSHER**  
• Flavors of the Wine Country  
• International Jewish Cuisine

**Andrea Nett**  
707/206-8686

**CATERING**  
*We specialize in B'nei Mitzvah*  
winecountrykosher@sbcglobal.net



## PRESIDENT'S PAGE

Arnold Drake, President

Recently Rabbi Miller and I attended a conference on the Modern Synagogue, sponsored by our local Jewish Federation. (When you are a synagogue President, or a Rabbi, you attend a lot of these.)

This conference described The Connected Congregation. There are three types of congregations: First is the *Jewish Journey*: congregants may come and go, and may have certain needs which will be financed on a fee-for service basis: life cycle events, adult and children's Jewish education, etc. This is what I think a traditional synagogue, like ours, practices.

A new form of synagogue is the *Mishkan*, where all congregants "build the community with varied and personal resources." Some do not have a rabbi. Perhaps some of our local non-affiliated Jewish groups function on this basis.

The third form of course is the hybrid of the two.

All three types of congregations are to practice "Relational Judaism: Where all (congregants) know and are known; (where they are) a community of communities." They are to practice "Radical Hospitality: No boundaries; all are fully included." (From a comment, I think this refers to Gay and lesbian Jews.) "Financial Transparency: Congregants know where the money goes." (All congregants at Beth Ami have the Annual Budget available at the Annual meeting.) There is also to be "Positive Talk about Money: There is an atmosphere

of safety, abundance and trust." And there must be a "Clear and Compelling Purpose: The clear vision of the community inspires (us to do our best)."

While all congregations should always try to relate to all of the congregants all of the time, the heart of the new arrangements is what has come to be called a *Fair Share* dues system. You look at your own personal income, and make a donation in the amount of your income. Each synagogue draws up its own income and dues levels, and each member is requested to pay that amount.

This idea has been around for a while. Some synagogues have tried it with success. Other synagogues have tried this system with disastrous results. We are not planning on discussing this at this time, but we might discuss this idea at next year's Board retreat. In the meantime, all synagogues are to look at new and novel ways of engaging congregants.


Your Board of Directors will continue to look at new ways to improve our kehilla. We will always involve you in the discussion.

I hope that everyone will have a joyous Channukah, and a healthy and happy secular New Year.



**at the Friedman Center**  
Every Sunday and Tuesday  
6:45pm Doors open at 4:00 pm  
Win up to \$350 per game  
Buy-in starts at just \$15!

"...the best breakfast & lunch joint around."  
Jeff Cox, Santa Rosa Magazine



**DIERK'S PARKSIDE CAFE**  
404 Santa Rosa Avenue  
Santa Rosa, CA 95404  
707/573-5955  
Mark Dierkhising and Karen Brodsky, Owners

**Have Faith!**  
**Braces are only temporary...**  
*The smile you achieve will last a lifetime!*



Proudly Supporting Local Community and Youth Programs  
CALL (707) 575-0600 for your FREE CONSULTATION!  
Santa Rosa • Windsor • Petaluma  
[WWW.BERNSTEINBRACES.COM](http://WWW.BERNSTEINBRACES.COM)





## NURSERY SCHOOL NOTES

Caroline Calvert & Robyn Fisher-Tachouet  
Nursery School Co-Directors

During the first week of November, our Nursery School children had the opportunity to make challah with our most esteemed master challah maker, Irwin Margolese. The children delighted in the challah man dancing with his special chef hat (yarmulke on top to boot!) followed by a show and tell. He had the kids touching and smelling the different ingredients that go into the challah. The children got to roll their challah dough into "snakes." Each child was given another two to learn to braid the special bread. The children got a real kick out of painting their challahs with egg and adding a topping—sesame seeds, cinnamon and/or sugar. The challahs were baked and bagged to take home. If you were lucky enough to be in the Social Hall, the smells were absolutely fantastic! The children have already asked if the challah man is coming again. Thank you so much, Irwin!

We also want to send a very special thank you to the Soup Sistas. We have had a few families in need who were delighted to receive soup and challah. They have been extremely touched by such a caring and loving community. Your efforts have not gone unnoticed; we sincerely appreciate it.

We are busily preparing for our annual Chanukah Guest play. Won't the kids be delighted to see their teacher dressed up as the main characters! It's a charming story of mistaken identity from the perspective of a sweet elderly Bubbie. A wonderful potluck will follow. We appreciate the opportunity to gather together outside the classroom and reflect on the extreme sweetness of this holiday.

Another note... We held our Kindergarten Informational Evening with representation from public and private schools. It was a great chance to have families come and ask specific questions about both Kindergarten and Transitional Kindergarten.

## Our Nursery School Treasure

Irwin Margolese

For those who know and would like to hear again, there is a treasure in our midst. The treasure is our Nursery School filled with the most beautiful children.



Last week they experienced a challah making class. It was wonderful. They were wonderful. They learned about spices. They learned about flour. About eggs. About sesame seeds. All about the ingredients comprising a challah. And finally, they got to make 3" dough snakes. Lastly, they braided, painted their prizes with egg wash, sprinkled on sesame seeds, cinnamon, and sugar. The 3 braided challahs (snakes) were baked in our Beth Ami kitchen and taken home to show their families.

It was a joyous experience to be repeated by many students, parents, teachers in the near future.

A special thanks goes to Lauren Kalmanson. She coordinated, managed, directed, and promulgated the entire program! I know that we are grateful to Lauren because this event would not have gone so well without her energy and love met out to all who participated!

And I? I, the newly appointed *Challah Man* with my chef's hat topped with a pink yarmulke, am grateful for this most wonderful event.

**ALEF** isn't enough  
**BET** isn't tough  
Study Modern Hebrew from  
the source with a native Israeli.  
All levels. The easy way.  
Prayers, Chanting Torah Tropes  
call: **Ahuva Simon-Sa'ar**  
**545-2454**

א  
ב  
ג  
ד  
ה  
ו  
ז  
ח  
ט



## RELIGIOUS SCHOOL REPORT

Pnina Loeb, Religious School Director

The point of Abraham taking Isaac up the mountain is to take him up, to reach the place where G-d appears to him, not to sacrifice him, but to take him higher. And by doing so we are to take ourselves higher as well.

We often hear commands wrong; especially when they concern the people and causes we love most, and call on us to give a lot of ourselves. We always have to be sure that it is G-d and Torah we follow, rather than faddish trends on the one hand, or sheer inertia on the other. Let's listen hard to pay attention to the warning that we not sacrifice our children's Judaism in order to preserve our current notion of how things have to be. The Rabbis justified a lot in the name of *va-hai ba-hem*, the command to live through Judaism and not die, and make sure that Judaism lives through us. What a blessing it is to have this moment, when so many of us are ready for that journey, and to have one another, companions on the path of Judaism, to help at every turn on the way. The future awaits us. Let's talk, keep moving and celebrating life!

### Upcoming CBA Religious School Calendar Dates:

**Sunday, December 1**—CBA Board sponsored Chanukah Party for all members. Please bring a side dish and join everyone from 4:30–7 p.m. We will have games and fun for all ages!

**Friday, December 6**—Family Shabbat Dinner. Join the festivities and make your reservations early.



Leanne Schy  
Graphic Design  
& Copywriting  
1145 Murray Ct.  
Santa Rosa,  
California 95404  
707-528-4874  
LSchy@Sonic.net

**Monday, December 11**—The 13th Tribe Meeting

**Friday, December 13**—Rockin Shabbat with a fantastic musician begins at 5 p.m. for ages 2–6, then dinner for all at 6, then at 7 p.m. stay for a creative Rockin Shabbat!

**Sunday, December 15**—Beth Ami & You presents *Be Our Guest, Be Our Guest*. Learning centers and the interactive story by Lauren will focus on the Middah and Mitzvah of Hospitality and Loving the Stranger.

**Friday, January 3rd**—Family Shabbat Dinner. Join the festivities and make your reservations early.

**Winter Break from December 22–January 4. Next RS date is Sunday, January 5.**

**Monday, January 13**—The 13th Tribe Meeting

**Friday, January 17**—Rockin Shabbat—Please join us and get folksy with Cantor Ricki Weintraub. We will begin at 5 p.m. for ages 2–6, then dinner for all at 6, then at 7 p.m. we'll continue with Cantor Ricki and Rabbi Miller leading services.

**Monday, January 27**—The 13th Tribe Meeting







## MITZVAH MOMENTS

Tish Levee

Judaism's greatest commandment is ***P'kuach Nefesh—Saving a Life***, superseding all others. In November, National Donor Shabbat month, I asked you to register as an organ donor. This month I'd like to you to consider being a living donor.\*

### A Tale of Two Kidneys

In 2005 at the Rosh Hashana, Rabbi Schlesinger announced that a congregant's father needed a kidney. Five CBA members came forth as potential donors for Richard Lazovick's father, Paul. In 2006, I was privileged to be his donor. Many of you are aware of this and know that, as a result, Paul's quality of life dramatically improved, as did his longevity. Richard, and Paul's two daughters weren't able to be donors; they shared the same genetic marker for a rare kidney disease with Paul. Now, seven years later, Richard has that disease and is in need of a kidney himself.

At the time, Rabbi Schlesinger said that a person could live very well with only one kidney—he had been doing it since he was twelve. If you remember his cross-country bicycle ride you know how true that was. I agree as I'm in excellent health, having no ill effects from being a donor when I was 66. Donating a kidney is easy; it's performed laproscopically with a very short hospital stay. Most people can return to work in a few weeks. Living donors get a comprehensive checkup to make certain they are in good physical and mental health. The costs of all the tests and the operation are covered by the recipient's insurance; there is no cost to the donor.

The very best option for a person with chronic kidney failure is a new kidney from a living donor. Next best is one from a deceased donor. Richard is on a list for that, but the waiting list is about eight years. Dialysis is the least favorable option. It's very hard physically, requires many hours a week, reduces life expectancy, and increases the risk of later transplant's rejection.

A living kidney will last twice as long as one from a deceased donor. It usually starts functioning immediately (Paul's new kidney was putting out urine in the operating room), whereas someone receiving a kidney from a deceased donor may require dialysis until the new kidney begins functioning.

Please consider helping save Richard's life and ask others to do so. For more information, go to [www.akidneyforrichard.com/](http://www.akidneyforrichard.com/) or call Richard at 707-981-4409.

For information about living donation, you can also go to the National Kidney Foundation site at [www.kidney.org/transplantation/livingdonors/index.cfm](http://www.kidney.org/transplantation/livingdonors/index.cfm).

\*"...no posek (Jewish religious authority) today forbids live kidney donation, and many, though stopping short of declaring it obligatory, encourage donation and consider it to be an extraordinary mitzvah." ([www.ou.org/results?q=kidney+donation#.UoZRBiiGhSV](http://www.ou.org/results?q=kidney+donation#.UoZRBiiGhSV) and [www.ou.org/results?q=kidney](http://www.ou.org/results?q=kidney))

**THE BETH AMI JUDAICA GIFT SHOP  
HAS IT ALL**

M-W 10-4:30 • Th 10-6 (except during December school vacation) • Friday 10-2  
Located in Beth Ami Gift Office

Sun	Mon	Tue	Wed	Thu	Fri	Sat
<p>8:30am - Morning Minyan @ Beth</p> <p>4pm - Chaavukah Potluck, Latkes,</p> <p>6:45pm - Bingo at Beth Ami @</p>	<p>Office Open 10am-4:30pm</p> <p>4:30pm - Chaverim - 8th Grade @</p>	<p>Office Open 10am-4:30pm</p> <p>10am - Adult Ed. Class</p> <p>6:45pm - Bingo at Beth Ami @</p> <p>7pm - Adult Ed. Class with Rabbi</p> <p>7pm - Rosh Chodesh Women's</p>	<p>Office Open 10am-4:30pm</p> <p>6:30pm - Israeli Dancing</p> <p>7pm - Midrash Study @ Room</p>	<p>Office Open 10am - 4:30pm</p> <p>6:30pm - Chaverim - 11th &amp; 12th</p> <p>7pm - Conversion Class @</p>	<p>Office Open 10am-2pm</p> <p>8pm - Shabbat Dinner</p> <p>7:30pm - Erev Shabbat Services</p>	<p>9:30am - Shabbat Services</p> <p>12pm - Potluck Luncheon</p>
<p>8:30am - Morning Minyan @ Beth</p> <p>6:45pm - Bingo at Beth Ami @</p>	<p>Office Open 10am-4:30pm</p> <p>10am - Adult Ed. Class</p> <p>6:45pm - Bingo at Beth Ami @</p> <p>7pm - Executive Committee Mtg.</p>	<p>Office Open 10am-4:30pm</p> <p>10am - Adult Ed. Class</p> <p>6:45pm - Bingo at Beth Ami @</p> <p>7pm - Executive Committee Mtg.</p>	<p>Office Open 10am-4:30pm</p> <p>5pm - NS Parent Informational</p> <p>7pm - Midrash Study @ Room</p>	<p>Office Open 10am - 4:30pm</p> <p>7pm - Conversion Class @</p>	<p>Office Open 10am-2pm</p> <p>7:30pm - Rockin Shabbat</p>	<p>9:30am - Shabbat Services</p> <p>12pm - Potluck Luncheon</p>
<p>8:30am - Morning Minyan @ Beth</p> <p>6:45pm - Bingo at Beth Ami @</p>	<p>Office Open 10am-4:30pm</p> <p>10am - Adult Ed. Class</p> <p>6:45pm - Bingo at Beth Ami @</p> <p>7pm - CBA Board Meeting @ CBA</p>	<p>Office Open 10am-4:30pm</p> <p>10am - Adult Ed. Class</p> <p>6:45pm - Bingo at Beth Ami @</p> <p>7pm - CBA Board Meeting @ CBA</p>	<p>Office Open 10am-4:30pm</p> <p>6:30pm - Israeli Dancing</p> <p>7pm - Midrash Study @ Room</p>	<p>Office Open 10am - 4:30pm</p> <p>7pm - Conversion Class @</p>	<p>Office Open 10am-2pm</p> <p>7:30pm - Erev Shabbat Services</p>	<p>9:30am - Shabbat Services</p> <p>12pm - Potluck Luncheon</p>
<p>8:30am - Morning Minyan @ Beth</p> <p>6:45pm - Bingo at Beth Ami @</p>	<p>Office Open 10am-4:30pm</p> <p>10am - Adult Ed. Class</p> <p>6:45pm - Bingo at Beth Ami @</p>	<p>Office Open 10am-4:30pm</p> <p>10am - Adult Ed. Class</p> <p>6:45pm - Bingo at Beth Ami @</p>	<p>Office Closed</p> <p>7pm - Midrash Study @ Room</p>	<p>Office Open 10am - 4:30pm</p> <p>7pm - Conversion Class @</p>	<p>Office Open 10am-2pm</p> <p>7:30pm - Erev Shabbat Services</p>	<p>9:30am - Shabbat Services</p> <p>12pm - Potluck Luncheon</p>
<p>8:30am - Morning Minyan @ Beth</p> <p>6:45pm - Bingo at Beth Ami @</p>	<p>Office Open 10am-4:30pm</p> <p>10am - Adult Ed. Class</p> <p>6:45pm - Bingo at Beth Ami @</p>	<p>Office Open 10am-4:30pm</p> <p>10am - Adult Ed. Class</p> <p>6:45pm - Bingo at Beth Ami @</p>	<p>Office Closed</p> <p>7pm - Midrash Study @ Room</p> <p>7pm - Rosh Chodesh Women's</p>	<p>Office Open 10am - 4:30pm</p> <p>7pm - Conversion Class @</p>	<p>Office Open 10am-2pm</p> <p>8pm - Shabbat Dinner</p> <p>7:30pm - Erev Shabbat Services</p>	<p>9:30am - Shabbat Services</p> <p>12pm - Potluck Luncheon</p>

Sun	Mon	Tue	Wed	Thu	Fri	Sat
<div>29</div> <div>8:30am - Morning Minyan @ Beth</div> <div>6:45pm - Bingo at Beth Ami @</div>	<div>30</div> <div>Office Open 10am-4:30pm</div> <div>10am - Adult Ed. Class</div> <div>6:45pm - Bingo at Beth Ami @</div>	<div>31</div> <div>Office Open 10am-4:30pm</div> <div>10am - Adult Ed. Class</div> <div>6:45pm - Bingo at Beth Ami @</div>	<div>1</div> <div>Office Closed</div> <div>7pm - Midrash Study @ Room</div> <div>7pm - Rosh Chodesh Women's</div>	<div>2</div> <div>Office Open 10am - 4:30pm</div> <div>7pm - Conversion Class @</div>	<div>3</div> <div>Office Open 10am-2pm</div> <div>6pm - Shabbat Dinner</div> <div>7:30pm - Erev Shabbat Services</div>	<div>4</div> <div>9:30am - Shabbat Services</div> <div>12pm - Potluck Luncheon</div>
<div>5</div> <div>8:30am - Morning Minyan @ Beth</div> <div>6:45pm - Bingo at Beth Ami @</div>	<div>6</div> <div>Office Open 10am-4:30pm</div> <div>10am - Adult Ed. Class</div> <div>6:45pm - Bingo at Beth Ami @</div>	<div>7</div> <div>Office Open 10am-4:30pm</div> <div>10am - Adult Ed. Class</div> <div>6:45pm - Bingo at Beth Ami @</div>	<div>8</div> <div>Office Open 10am-4:30pm</div> <div>7pm - Midrash Study @ Room</div>	<div>9</div> <div>Office Open 10am - 4:30pm</div> <div>7pm - Conversion Class @</div>	<div>10</div> <div>Office Open 10am-2pm</div> <div>7:30pm - Erev Shabbat Services</div>	<div>11</div> <div>9:30am - Mira Wegman's Bat</div> <div>12pm - Hosted Luncheon</div>
<div>12</div> <div>8:30am - Morning Minyan @ Beth</div> <div>10am - Beth Ami &amp; You</div> <div>6:45pm - Bingo at Beth Ami @</div>	<div>13</div> <div>Office Open 10am-4:30pm</div> <div>6:30pm - Chaverim - 9th Grade @</div>	<div>14</div> <div>Office Open 10am-4:30pm</div> <div>10am - Adult Ed. Class</div> <div>6:45pm - Bingo at Beth Ami @</div>	<div>15</div> <div>Office Open 10am-4:30pm</div> <div>7pm - Midrash Study @ Room</div>	<div>16</div> <div>Office Open 10am - 4:30pm</div> <div>6:30pm - Chaverim - 10th Grade</div> <div>7pm - Conversion Class @</div>	<div>17</div> <div>Office Open 10am-2pm</div> <div>7pm - Rockin' Shabbat Services</div>	<div>18</div> <div>9:30am - Shabbat Services</div> <div>12pm - Potluck Luncheon</div>
<div>19</div> <div>8:30am - Morning Minyan @ Beth</div> <div>6:45pm - Bingo at Beth Ami @</div>	<div>20</div> <div>Office Closed</div>	<div>21</div> <div>Office Open 10am-4:30pm</div> <div>10am - Adult Ed. Class</div> <div>6:45pm - Bingo at Beth Ami @</div> <div>7pm - Executive Committee Mtg.</div>	<div>22</div> <div>Office Open 10am-4:30pm</div> <div>12pm - Friendship Circle</div> <div>7pm - Midrash Study @ Room</div>	<div>23</div> <div>Office Open 10am - 4:30pm</div> <div>7pm - Budget &amp; Finance</div> <div>7pm - Conversion Class @</div>	<div>24</div> <div>Office Open 10am-2pm</div> <div>7:30pm - Erev Shabbat Services</div>	<div>25</div> <div>9:30am - Shabbat Services</div> <div>12pm - Potluck Luncheon</div>
<div>26</div> <div>8:30am - Morning Minyan @ Beth</div> <div>6:45pm - Bingo at Beth Ami @</div>	<div>27</div> <div>Office Open 10am-4:30pm</div> <div>6:30pm - Chaverim - 9th Grade @</div>	<div>28</div> <div>Office Open 10am-4:30pm</div> <div>10am - Adult Ed. Class</div> <div>6:45pm - Bingo at Beth Ami @</div> <div>7pm - CBA Board Meeting @ CBA</div>	<div>29</div> <div>Office Open 10am-4:30pm</div> <div>7pm - Midrash Study @ Room</div>	<div>30</div> <div>Office Open 10am - 4:30pm</div> <div>6:30pm - Chaverim - 10th Grade</div> <div>7pm - Rosh Chodesh Women's</div>	<div>31</div> <div>Office Open 10am-2pm</div> <div>7:30pm - Erev Shabbat Services</div>	<div>1</div> <div>9:30am - Shabbat Services</div> <div>12pm - Potluck Luncheon</div>





## ISRAEL FROM THE LEFT COAST

Bob Raful

Over the years we have been delighted to hear/read stories of a first trip to Israel by young people we know—USY, Birthright, etc. Rarely have we spoken to adults about a first trip. So, I must share this story with you. A 65-year “young” couple (extended family) are in Israel on a SoCal Federation trip, which they preceded with several pre-trip days. She is a retired school administrator, EdD—i.e. she writes well—here are some excerpts from her journal:

“Today began by driving to Jerusalem to the Mount of Olives where (guide) gave us quite a history lesson as we overlooked the entire city. The Chagall Windows at the Hadassah Hospital were a beautiful treat. Next we spent the remainder of the afternoon at Yad Vashem. Needless to say, we were emotionally spent by the end of our visit.

We were on our own today and our plan worked! The highlight—the current King Herod Israel Museum Exhibit and the model of Jerusalem and the second temple—is spectacular. The Dead Sea Scroll building is architecturally impressive. Tonight our SoCal Group joins us.

Standing at the Western Wall was far more emotional for us than either of us imagine. Whether or not you conceptualize that God is everywhere or at the Western Wall or in your heart—the historical magnificence of being there is nothing that we could have anticipated. Being on top of Masada and listening to the story of King Herod, the Romans and standing on this architectural phenomenon is a bit overwhelming.

Without a doubt a highlight of the past few days was walking in the tunnels underneath the Western Wall. Believe it or not, our tour began at 10 p.m. and we walked until 11:30 p.m. and were wide awake and fascinated by the experience. Last night we spent the night on a kibbutz resort on the Sea of Galilea—Safed is an artist community where we bought a unique menorah, incredible candles and

some nice gifts. We were in the Golan Heights, Jordan River, Lebanon, Syria—the countries are all so close together.

Never in a million years did we expect to buy an oil painting of the Western Wall but that is exactly what we did. We were BOTH so moved by our experiences. Throughout our lives we have faced the West in Temple when we pray but not until we were standing at the wall, down in the tunnels, seeing people praying at midnight after having gone to Masada, the Bullet factory, the Palmach Museum, Caesarea, and listened to the history at Independence Hall, the Israel Museum, etc. did we begin to understand the struggle of our Jewish people. But hearing the history and walking the sites in Israel raises many questions and stimulates your mind into a curiosity I haven't had about Israel and Jews before now.”

Conclusion—Plan a trip to Israel!



earth  
in  
upheaval  
e. i. u., inc.  
outstanding service  
and repair for your vehicle

on the web at:  
[earthinupheavalautorepair.com](http://earthinupheavalautorepair.com)  
an unusual name  
with  
unusual excellence  
1970-2013  
Forty-Three Years Of Quality Service  
We know and are equipped to work on:

Acura	Lexus	Volvo
Audi	Mazda	VW
BMW	Mercedes-Benz	Domestics
Honda	Mini	Hybrids
Hyundai	Nissan	
Infiniti	Subaru	
Kia	Toyota	

5300 Sebastopol Rd.  
Santa Rosa, CA 95407  
Open Monday - Saturday  
rental cars available  
[earthin@sonic.net](mailto:earthin@sonic.net)  
Richard Kahn (707) 523-3777



## LITERARY LINES

Gabor Por, Librarian

I am happy to report that the library added dozens of books to its collection. To show the scope of the new addition let me introduce three different kind of books that are now available for borrowing: a novel, a theological exploration and a collection of short stories.

Dalia Rabinovich's book, *Flora's suitcase*, is from 1998 combines magical realism with a funny family saga as it follows a Jewish couple's emigrant life in Colombia. If you read it you will be exposed to delicate issues of culture clash between Colombian and American traditions, and between modern Jews and their conservative Russian emigre relations.

The title of Rabbi Elie Kaplan Spitz is *Does the Soul Survive?* Its subtitle is even more telling: *A Jewish journey to belief in afterlife, past lives & living with purpose*. The book explores a lot of related topics, including near death experiences and the big question of what is the nature of our existence. Lawrence Kushner found it "a wise, moving, carefully thought out and provocative first-person exploration in the immortality of the soul." I couldn't sum it up any better.

Etgar Keret's *The Girl on the Fridge* contains 46 short stories, none of them longer than 5 pages. His characters are vivid and the stories sometimes are dark, so it is not for everyone. But if you enjoy thought-provoking situation and stories verging on the edge of absurd you will find this book a delight. Keret is considered one of the most important writer working in Israel right now. Immerse yourself in his world.

We have many more new books and thousands of others in our collection waiting to be read, studies, enjoyed, argued with. Pick your pleasure.

On a personal note: your humble librarian started a blog where several times a day shares news and links about Jewish book. So if you cannot get enough of the topic or want to be on the top of this world check out [jewishbook-world.tumblr.com](http://jewishbook-world.tumblr.com).



## ADULT EDUCATION

### Make A Scene At Beth Ami

Rabbi Danzig helps us dramatize Biblical characters

Tuesdays, 7–8:30 p.m., November 12, 19, 26; December 3 in classrooms 12–13

### A View From The Stage

This course explores how biblical heroes and myths evolved onto the theater stage. John Milton (17th century), auto-biographically in *Samson Agonistes*. In the 18th century, Haydn orchestrates the first chapter of Genesis in his oratorio, *The Creation*. In the 20th century, Genesis is treated by Arthur Miller in his play *The Creation of the World and Other Business*; Noah is the pathetic hero in Clifford Odets' *The Flowering Peach*; in *J.B.*, Archibald MacLeish develops a contrasting study to the biblical Job. The selection of the plays will be presented as reader's theater. Students will be asked to volunteer to do the dramatic readings, coached by Rabbi Danzig.

### Express Your Informed Opinion On Current Jewish Topics

Tuesdays 10–11:30 a.m., Starting November 6 in the Multi-Purpose room

Beth Ami members lead discussions of articles and issues from *J Magazine*; *CJ*; *Hadasah* or other Jewish journals copies of which will be made available to students. Attendees will have read the selected articles before each class (except the first) and will be welcome to select articles of interest to them discussion of which they would be willing to moderate.





## WHAT'S COOKING WITH THE KITCHEN COMMITTEE?

Jeffrey & Janet Stein-Larson (Co-Chairs)

We have had a lot to be thankful for over the last few months. Thanks to Richard Kahn, we now have a small fan and more ventilation in the kitchen. It brings down the temperature from what has been in hot weather, in the 90s when first entering the kitchen; to a lower 82–84 degrees. This will extend the life of our refrigerator and freezer. And guess what else has changed again thanks to Richard...we now have a light in the refrigerator (and did you notice we didn't have one before?) Mark Rosen decided we needed a better egg slicer so he donated one. We've had an anonymous donation of a 3-pot slow cooker buffet set. Rick Concoff and the Chaverim donated a new microwave. Ruth and Ira Rosenberg donated some kitchen cookware and warmer plates. Ahuva Simon-Sa'ar donated a toaster oven, strainer, grater, and slicer. Thank you all for thinking of the CBA kitchen!

What's been happening in the Beth Ami Kitchen over the last couple of months? We have been very busy. Besides the challah baking for our Shabbats, there was also a Nursery School Challah baking class. We've had our regular Family Shabbat dinners, and we also had some Rockin' Shabbat dinners. Our pot-lucks after Shabbat services have been amaz-

ing, and we've had a couple of extra special Simcha Shabbat celebrations. The CBA Soup Sisters have made more soup for distributing. There have also been Beth Ami and You programs, Beth Ami lectures, and classes involving Beth Ami Kitchen. By the time you read this, you may also add on Avi's Bar Mitzvah, the Scholar-in-Residence program and a couple of latke making sessions for both the Nursery School and Beth Ami Hanukah Party.

A big thank you to all of you who made this possible; the members of the Kitchen Committee, all of our mashgichim volunteers, all the event volunteers (organizers, preparers and cleaners), and all of our Beth Ami members who are supporting us. With your continued help, you are helping to make the Beth Ami Kitchen more open to our congregation's needs.

—*The kitchen is where community happens and people come together*



## SHABBAT DINNER RSVP

### Shabbat Dinner:

☐ Friday, December 6 \_\_\_\_\_

☐ Friday, January 3 \_\_\_\_\_

# of Beth Ami Member Adults \_\_\_\_\_ @ \$18 = \_\_\_\_\_

# of Non-member Adults \_\_\_\_\_ @ \$22 = \_\_\_\_\_

# of Youth \_\_\_\_\_ @ \$9 = \_\_\_\_\_

### Please return payment and forms to:

Congregation Beth Ami  
4676 Mayette Ave.  
Santa Rosa, CA 95405  
707/360-3000

Name \_\_\_\_\_

Phone \_\_\_\_\_

I want to volunteer for (indicate which event) \_\_\_\_\_

Total amount enclosed \_\_\_\_\_

☐ Check \_\_\_\_\_ ☐ Visa/MC \_\_\_\_\_

Credit Card # \_\_\_\_\_

Expiration Date \_\_\_\_ / \_\_\_\_

Billing Zipcode \_\_\_\_\_





## SOCIAL ACTION SCOOP

Lyla Nathan

It is hard to believe that when you read this article Chanukah will almost be over. It has been a very busy time with the holidays coming so early this year. So for most of us, December will be a quiet month and perhaps a good time to help those in need. I know there is always need to help with toys and food distribution at the fairgrounds as well as serving meals on or around Christmas time.

The Social Action Committee is planning on volunteering at the Redwood Empire Food Bank on Mon., Dec. 9th from 5–7. Please let me know if you can make it. Call Lyla at 526-7438 or Lizzy at the office at 360-3000. If you can't make it on that date you can walk in most anytime from to help. They are always in need of help.

We have been busy helping with the JFCS food pantry supplying fresh fruit and vegetables and frozen items from the Redwood Empire food Bank.

The Congregation continues to be very generous in supplying staples to the pantry. Thank you all so much. There is a great need at this time of the year. Please continue to bring items to the synagogue. They especially need the following items:

- Canned tuna or chicken
- Peanut butter
- Canned chili or beans
- Mac-n-cheese
- Gluten free products
- Tea bags
- Canned fruit (low sugar)
- Small hygiene products: toothpaste, shampoos, individually wrapped toilet paper

We are co-sponsoring the winter clothing drive with Shomrei Torah. Thanks to everyone who brought such good clothing for those who are homeless during these cold winter night. You can continue to bring clothes through Dec. 15th.

The Soup Sisters also has made delicious mushroom barley soup with little challahs from nurse Susan Miller and Irvin Margolese. please contact the office if you or someone you knows is in need of some TLC.

The SAC and Rockin Shabbat just had a very successful Friday Night dinner and service and oneg. There were over 120 people in attendance and the sound of young voices and the acappella choir Kol Ha Dov certainly lit up the social hall and sanctuary. Everyone was thrilled to see so many young families here at Beth Ami. The evening was a celebration and honoring of the Interfaith Families in our community. We thanked them and will continue to appreciate how they are vital to Beth Ami's community .

The event was part of a Bay Area celebration of interfaith families. The sponsoring organization is Interfaith Families based in SF whose main purpose is to encourage the Jewish community to be inclusive and welcoming to interfaith families.

We want to thank everyone who came to the Shabbat. And give special thanks to the Rockin Shabbat Beth Ami and You committee (Sara Miller, Barb McGee, Barbara Tomin, Pnina Loeb, and Ronit Glickman) who has brought such wonderful entertainment and provided such a wonderful potato bar.

Tomorrow, a few members are going to an informative dinner at the Tamayo Village (a housing facility of SAY, Social Advocates for Youth). We will meet with SAY staff and some of the youth that live there and learn more about the proposed Dream Center.

### Please Support Our Advertisers

Contact Congregation Beth Ami Office  
[office@bethamir.org](mailto:office@bethamir.org)  
for details about advertising in the Shofar.

**Thank you!**



## GENEROUS CONTRIBUTIONS TO OUR CONGREGATION

The next time you are looking for a meaningful way to celebrate a joyous occasion, remember a loved one, or comfort a mourner, please consider a donation to Congregation Beth Ami. When you make a gift, a card is sent to the honoree or the family and your donation is proudly acknowledged in the Shofar. The minimum donation for each occasion is \$7.50. Congregation Beth Ami truly appreciates your support.

### General Fund

In memory of Al Sherman—  
*Nancy & Ed Sherman & Family*

In memory of Josephine Sherman—  
*Nancy & Ed Sherman & Family*

In memory of our parents—  
*Abe & Gayle Farkas*

In memory of my mother,  
Ruth Meltzer—*Allan Meltzer*

Condolences to Debbie Shapiro  
on the passing of her father,  
Irving Herman— *The Ballo Family*

Todah Robah to the Religious  
Practices Committee for their  
bringing Cantor Yael Krieger—  
*The Ballo Family*

Continuing better health to  
Arnold Drake— *The Ballo Family*

Thanks to all the Torah and Haftarah  
portions during High Holidays!—  
*The Ballo Family*

Todah Robah to Ronit Glickman,  
Lauren Kalmanson and others  
who've done so much work to make  
*Beth Ami & You* happen—  
*The Ballo Family*

In memory of Betty Boyd's father—  
*Mel Decker & Judy Stern*

In memory of Eli Cohen's &  
Betty Boyd's sister-in-law—  
*Mel Decker & Judy Stern*

In memory of Betty Boyd's father—  
*Bob & Susy Raful*

In memory of Eli Cohen's  
sister-in-law—*Bob & Susy Raful*

In memory of my husband, Barney  
Kovacs and his parents, Frank &  
Ershebet Kovacs—*Esther Pilch*

In memory of my parents, Leon &  
Sabina Pelta, and my stepfather,  
Moses (Mike) Schiller—*Esther Pilch*

In memory of my aunt & uncle,  
Isaac & Sara Pelta—*Esther Pilch*

In honor of my three grandchildren,  
Jason, Eleanor, and Sienna Charlie  
(Simcha Chaya)—*Esther Pilch*

In memory of my father, Moises  
Rosenbach—*John Rosenbach*

In memory of Malka Miller—  
*Eli & Yona Miller*

In memory of Charles Cohen—  
*Betty Boyd & Eli Cohen*

In honor of Judi Hyman's birthday—  
*Carolyn Metz*

In honor of being called for an  
aliyah—*Esther Pilch*

In memory of Mayer Wegman—  
*The Wegman Family*

In honor of Lillian Judd's 90th  
birthday—*Jeff Sheff*

In honor of Jeff Sommer's birth-  
day—*Robin & Richard Lederman*

Condolences to Betty Boyd upon  
the passing of her father, Mitchell  
Boyd— *The Ballo Family*

Speedy recovery to Ahuva  
Simon-Sa'ar— *The Ballo Family*

Congratulations to Carolyn Metz and  
John Metz upon the birth of the first  
grandchild - and congratulations to  
parents Josh & Megan—  
*The Ballo Family*

Mazel Tov to Avi Gitlin upon his Bar  
Mitzvah—*The Ballo Family*

In memory of David's mother, Lisa—  
*The Ballo Family*

Condolences to Mort & Ruth Weiss  
and entire Weiss family on the  
passing of Benjamin Weiss—  
*The Ballo Family*

Speedy recovery to Mazie Miller—  
*The Ballo Family*

Continuing better health to  
Tyler Rogovin—*The Ballo Family*

In memory of Benjamin Weiss—  
*Barbara Tomin*

In memory of Benjamin Weiss—  
*Bernice & Ed Harman Fox*

In appreciation for the Soup Sister,  
Esther Baruch, Susan Miller, Lyla  
Nathan, and Cheryle Stern Miller  
whose soups nurtured me after my  
recent surgery—  
*Edee Sternfield-Squires*

In memory of John Metz—  
*Richard Kahn & Anne Brown*

In honor of Lillian Judd's 90th  
birthday—*Jeff Sheff*

In memory of John Metz—  
*Barb McGee*

In memory of John Metz—  
*Brooke & Carolyn Kantor*

In memory of John Metz—*Tish Levee*

In memory of John Metz—  
*Barbara & Gary Greensweig*

In memory of John Metz—  
*Adrea & Howard Moss*

In memory of Isadore Wiesenthal—  
*Natalie Friedman*

In memory of John Metz—  
*Pat & Bill Thomas*

In honor of Avi Gitlin's  
Bar Mitzvah—*Tish Levee*

In memory of John Metz—  
*Betty Boyd & Eli Cohen*

In memory of John Metz—  
*Ethel & Stu Schy*

In memory of Ethel's father,  
Jacob Goldman—*Ethel & Stu Schy*

For participation in  
High Holy Day service—*Ivan Barta*

Speedy recovery to Diane  
Troderman—*Binese & Earl Goldberg*

In memory of my mother,  
Mollie Raful—*Bob Raful*

In honor of Irwin Margoless's  
birthday—*Lindsay Kvam*

### Library Fund

In memory of my husband,  
Eugene Streitfeld—*Ricki Streitfeld*

In memory of my mother,  
Rose Schneider—*Evelyn Gurevitch*

### Malk Fund

In memory of my parents,  
Miriam & Max —*Phyllis Shapiro*

In memory of Norman Shapiro—  
*Edith Neuman*

In memory of John Metz—  
*Jennifer Hayes*

In memory of John Metz—  
*Carl Servin*

### Nursery School Fund

In memory of Anne Varco's mother—*Nancy & Ed Sherman & Family*

In memory of Susan Ponger—  
*Ellen & Barry Samuel*

Get well wishes to Lisa McCalley—  
*Ellen Samuel*

### Rabbi's Fund

In memory of my mother, Sydney  
Lorraine Paul—*Jane Paul*

In memory of Irving Judd, our son,  
brother, and uncle—  
*Lillian & Dennis Judd & Family*

In honor of Al &  
Susanne Batzdorff—  
*Norman & Beverly Feldman*

In memory of Burcha Vilenskaya—  
*Malvina Tsipan*

In memory of John Metz—  
*Lee Mehlman*

In memory of John Metz—  
*Andy & Nancy Fleming*

In memory of John Metz—  
*Norman & Beverly Feldman*

In memory of John Metz—  
*Audrey Darby*

In memory of Samson Hochfield—  
*Malvina Tsipan*

### Religious School Fund

In memory of my parents, Dora &  
Jack Schiffman—*Bernice Fox*

In memory of Benjamin Weiss—  
*Barb McGee*

In memory of John Metz—  
*Richard Kahn & Anne Brown*

## eSCRIP UPDATE—AN EASY WAY TO HELP CBA RAISE FUNDS

News flash! Effective Nov. 1, 2013, Safeway purchases paid for with a credit card will no longer earn contributions for Beth Ami. Accepted payment types include check, cash, debit card and Safeway gift card. If this affects you, a suggestion is to purchase a Safeway gift card with your credit card and then use that to make your purchases. This will ensure that Beth Ami will receive your eScrip contributions.

Molsberry Market in Larkfield Center has joined the eScrip program through their Community Card program. For sign-up info go to:

[www.escrip.com/molsberrymarket](http://www.escrip.com/molsberrymarket). Petaluma Market on Western Ave. has a Community Card as well. For sign-up info go to: [www.escrip.com/petalumamarket](http://www.escrip.com/petalumamarket). If you shop at Oliver's Markets in Santa Rosa or Cotati, remember to get your Community Card at the store and choose *Beth Ami* to get the eScrip proceeds. So many great eScrip shopping choices around Sonoma County.

For the first nine months of 2013, Beth Ami earned over \$1,900 from eScrip. This was achieved by supporters *just doing their regular shopping* at Oliver's, Safeway and other merchants.

Anyone can participate and contribute; you do not have to be a CBA member & you do not have to live in Sonoma County. Ask your friends & relatives; go to [escrip.com](http://escrip.com) and put in ID# 136921119 or call the numbers below for help.

If you are not a part of this easy way to help Beth Ami, join us *now!*

To sign up or get eScrip help, contact Nancy Sherman at (707) 538-9388 or [nancysherman06@gmail.com](mailto:nancysherman06@gmail.com) or call Lauren Newman at (707) 525-9029.

### Simcha Board Tree of Life

*Honor thy mother...also  
thy aunt, uncle, cousin,  
child, best friend, teacher  
with an engraved  
leaf on our Simcha  
Board, commemorating  
any joyous occasion,  
bestowal  
of an honor, or cause  
for thanksgiving.*

**Leaf** \$360  
**Small Stone** \$1000  
**Large Stone** \$2500

*We also provide the  
opportunity for you to  
memorialize loved ones.*

**Yahrzeit Board  
Plaque** \$450







## December Yahrzeits

Secular dates correspond to Hebrew date of death.

Observance of yahrzeit begins at sundown the previous day.

All yahrzeits observed at Beth Ami.

### Announced on Dec. 6 and 7

Dec. 7	Alma Shapiro	Mother of Raynore Paule
Dec. 10	Carol Cohn	Mother of Henry Cohn
Dec. 10	Gertrude German	Mother of Ellen Mundell
Dec. 10	Evelyn Schwaber	Mother of Fredrika Gross
Dec. 11	Gert Cohen	Mother of Eli Cohen
Dec. 11	David Kerben	Husband of Claire Miller
Dec. 13	Benjamin Strudler	Nephew of Susan Miller

### Announced on Dec. 13 and 14

Dec. 17	Elaine Fried	Mother of Caryn Fried
Dec. 17	Harry Glickman	Father of Donald Glickman
Dec. 18	Abraham Backman	Father of Roslyn Edelson
Dec. 18	David Goldberg	Father of Betty Franks
Dec. 19	William Friedman	Grandfather of Joslyn Metzger
Dec. 19	Dorothy Murov	Sister of Betty Franks
Dec. 20	Robert Deal	Brother of Barbara Whitaker
Dec. 20	Jack Schiffman	Father of Bernice Fox

### Announced on Dec. 21 and 22

Dec. 21	Beatrice Dzik	Mother of Judith Dzik
Dec. 21	Bea Kaplan	Grandmother of Michelle Zygielbaum
Dec. 22	Isadore Goldman	Grandfather of Chelsie Uriarte
Dec. 22	Elaine Robinson	Mother of Myrna Morse
Dec. 23	Mordachai ben Hershel	Brother of Evelyn Gurevitch
Dec. 24	Gladys Baba	Mother of William Cordell
Dec. 24	Olive Conklin Boyer	Mother of Ruth Rosenberg
Dec. 24	Avraham Sapoljnikov	Father of Ahuva Simon-Sa'ar
Dec. 24	Julius Serman	Father of Milton Serman
Dec. 25	Rosa Newman	Mother-in-law of Edith Newman
Dec. 27	Jettie Rijnveldt	Stepsister of Mienieke Drake

### Announced on Dec. 27 and 28

Dec. 28	Edith Volkmann	Sister of Evelyn Gurevitch
Dec. 29	Henry Rosenblatt	Brother of Miriam Rubinstein
Dec. 30	Mary Lastofka	Sister of Susy Raful
Dec. 31	J.J. Fitzgibbons	Husband of Andrea Goodman
Dec. 31	Joe Leavy	Brother-in-Law of Evey Abramowitz
Jan. 1	Ruth Baruch	Mother of Esther Baruch
Jan. 1	Dean Fleming	Father of Andy Fleming
Jan. 1	Verne Paule	Husband of Raynore Paule
Jan. 2	Sylvia Bernstein	Aunt of Marc Bernstein

### December Birthdays

1	Susan Brown
2	Anya Por
3	Bonnie Meltzer
6	Harold Boren
9	Max Graff
10	Ronit Glickman
12	Etienne Sampiere
13	Eleanor Cohen
14	Michael Kupperberg
15	Debra Chapman
18	Melvin Decker
19	Sheyna Bakman
19	Carolyn Metz
19	Dan Pleasant
20	Stanley Feingold
24	Natalie Friedman
27	Fredrika Gross
29	Marilyn Sommer
30	Deborah Hight Kramer
31	Regina Marvan

### December Anniversaries

5	Bill & Suzie Friedman
9	Iosif & Marina Voulfson
23	Howard & Adrea Moss
31	David & Sherri Kahn

## Jewish Community Contacts

### Hillel of Sonoma County

Lindsay Folkerth, 795-5464, [www.sonomahillel.org](http://www.sonomahillel.org)

### JCC, Sonoma County

Beth Goodman, 528-4222, [www.jccsoco.org](http://www.jccsoco.org)

### Jewish Community Federation

Barbara Levinson, 568-6207, [www.sfjcf.org](http://www.sfjcf.org)

### Jewish Community Free Clinic

Donna Waldman, 585-7780,  
[www.jewishfreeclinic.org](http://www.jewishfreeclinic.org)

### Jewish Community Relations Council

Suzan Berns, 415/957-1551, [www.jcrc.org](http://www.jcrc.org)

### Jewish Family & Children's Services

Diana Klein, 571-8131,  
[www.jfcs.org/sonoma-county](http://www.jfcs.org/sonoma-county)



## January Yahrzeits

Secular dates correspond to Hebrew date of death.

Observance of yahrzeit begins at sundown the previous day.

All yahrzeits observed at Beth Ami.

### Announced on Jan. 3 and 4

Jan. 5	Charles Feingold	Father of Stanley Feingold
Jan. 6	Ruth Susnow	Mother of Nancy Fleming
Jan. 7	Elizabeth Carlson	Daughter of Sylvia Sucher
Jan. 7	Lewis Magnus	Grandfather of Howard Glickman
Jan. 7	David Myerfeld	Grandfather of Patty Bernstein
Jan. 8	Erna Biberstein	Mother of Susanne Batzdorff
Jan. 8	Eleanor Marshall	Mother of Carolyn Metz
Jan. 9	Raymond Lachman	Brother of Vivian Salmon
Jan. 10	Irving Decker	Father of Melvin Decker
Jan. 10	Munja Pipkin	Mother of Sheyna Bakman
Jan. 10	George Waldman	Grandfather of Barbara Whitaker

### Announced on Jan. 10 and 11

Jan. 11	Simon Kovar	Grandfather of Dr. Gary Herzberg
Jan. 12	Ira Hayes Rosenberg	Father of Ira Rosenberg
Jan. 12	Nomi Lev-Yahm	Mother of Vivian Klein
Jan. 15	Lillian Margoese	Grandmother of Michelle Zygielbaum
Jan. 15	Isac Rijnveld	Stepfather of Mienieke Drake
Jan. 16	Florence Alexander	Grandmother of Abraham Alexander
Jan. 16	Mariya Antonovsky	Mother of Olga Pekker
Jan. 16	Marguerite Connors	Mother of Tish Levee

### Announced on Jan. 17 and 18

Jan. 18	Harry Schneider	Father of Evelyn Gurevitch
Jan. 19	Mark Gurevitch	Brother of Evelyn Gurevitch
Jan. 21	Sheyna Morse	Mother-in-law of Myrna Morse
Jan. 23	Quentin Brown	Father of Anne Brown
Jan. 23	Freda Weiss	Mother of Mort Weiss
Jan. 24	Erwin Batzdorf	Father of Alfred Batzdorff
Jan. 24	Gershon Kahn	Father of David Kahn

### Announced on Jan. 24 and 25

Jan. 25	Helen Keller	Mother of Ruth Weiss
Jan. 25	Aaron Ramsey	Grandson of Mazie Miller
Jan. 26	Rayfield Helman	Father of Judith Helman
Jan. 27	Zislye bas Mendel Laib	Mother-in-law of Evelyn Gurevitch
Jan. 27	Sophie Shapiro	Mother-in-law of Phyllis Shapiro

### January Birthdays

3	Margorie Ballo
5	Jack Wegman
6	Abraham Alexander
6	Mienieke Drake
9	Tish Levee
14	Fred Marvan
16	Lenore Holloway
16	Ricki Streifeld
16	Henry Winkler
17	Paula Schlesinger
19	Donald Glickman
21	Michele Guttenberg
26	Karen Brodsky
28	Bill Friedman
28	Robert Raful
31	Stephen Nett

### January Anniversaries

2	Abe & Laura Alexander
2	Mark Deirkhising & Karen Brodsky
7	Mort & Ruth Weiss
17	Jerry Lakins & Susan Miller
18	Mark & Jacqueline Sutter

### Larry Gregg

Bujinkan Santa Rosa Dojo

Traditional Martial Arts -  
Self Defense

phone: 707 481-7370

email: [srbd@att.net](mailto:srbd@att.net)

web: [santarosabujinkan.com](http://santarosabujinkan.com)





# Congregation Beth Ami

4676 MAYETTE AVENUE, SANTA ROSA, CA 95405

**Address service requested**

## **December Shabbatot**

### **December 7**

*Parshat Vayiggash: Gen. 44:18–45:27*  
(Page 274)

Friday Candle Lighting 4:32

Saturday Havdalah 5:33

### **December 14**

*Parshat Vay'bi: Gen. 47:28–48:22 (Page 293)*

Friday Candle Lighting 4:32

Saturday Havdalah 5:34

### **December 21**

*Parshat Shemot: Exod. 1:1–2:25 (Page: 317)*

Friday Candle Lighting 4:35

Saturday Havdalah 5:37

### **December 28**

*Parshat Va'era: Exod. 6:2–7:7 (Page: 351)*

Friday Candle Lighting 4:38

Saturday Havdalah 5:41

## **January Shabbatot**

### **January 4**

*Parshat Bo: Exod. 10:1–11:3 (Page: 374)*

Friday Candle Lighting 4:44

Saturday Havdalah 5:46

### **January 11**

*Parshat B'shallach: Exod. 13:17–15:26*  
(Page: 399)

Friday Candle Lighting 4:50

Saturday Havdalah 5:52

### **January 18**

*Parshat Yitro: Exod. 18:1–27, (Page: 432)*

Friday Candle Lighting 4:57

Saturday Havdalah 5:59

### **January 25**

*Parshat Mishpatim: Exod. 21:1–22:3*  
(Page: 456)

Friday Candle Lighting 5:05

Saturday Havdalah 6:06