



CONGREGATION  
Beth Ami

Shofar

4676 MAYETTE AVENUE, SANTA ROSA, CALIFORNIA 95405

707-360-3000

AUGUST 2010

AV / ELUL 5770

## PLEASE CELEBRATE WITH US AT OUR ANNUAL BBQ & BARCHU ON AUGUST 6!

**Rabbi Schlesinger's safe return from his amazing  
bicycle trip across America**



**Elsie Rich's 109<sup>th</sup> birthday**

**Shabbat**



We traditionally have a Shabbat BBQ & Barchu outside on the courtyard patio in August (reservations must be in by August 4, at noon; RSVP to [office@bethamir.org](mailto:office@bethamir.org)).

In addition, this year we'll be singing birthday wishes to Elsie. In fact, the "cost" to attend the dinner is \$14.00 per adult member AND a birthday card for Elsie!

Bring your Shabbat candle holders and candles, when all the picture-taking or videoing is done, we'll light candles, say the blessings and proceed with dinner, and on to services.

CST'S ENVIRONMENTAL ACTION AND SOCIAL ACTION COMMITTEES INVITE YOU  
TO A LIVELY DISCUSSION ABOUT THE FUTURE OF THE SANTA ROSA SOUTHEAST GREENWAY

## Using the Right-of-Way the Green Way! Wednesday, August 11, 2010 • 7:00–9:00 pm

Congregation Shomrei Torah, 2600 Bennett Valley Road, Santa Rosa

Imagine trails, bike paths, community gardens, and more linking Spring Lake and Annadel Park with downtown Santa Rosa along the undeveloped Highway 12 right-of-way. Come learn about the SOUTHEAST GREENWAY CAMPAIGN, a community-based project to develop a vital urban greenway on the 2+ mile long (50 acre) property that stretches from Farmers Lane to Spring Lake.

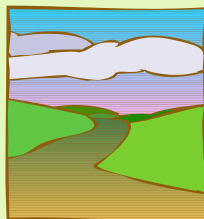
An interactive slide presentation will include discussion and an opportunity to ask questions and share ideas for the greenway.

### **For information and to RSVP, contact:**

Susan Richter, 707/566-0996, [susanrichter@earthlink.net](mailto:susanrichter@earthlink.net)

David Ballo, [klezhead@yahoo.com](mailto:klezhead@yahoo.com)

This event is co-sponsored by Congregations Shomrei Torah and Beth Ami.



## Dine & Donate

Dine in or take out at Mary's Pizza Shack on Summerfield Road on **Wednesday, August 4** and 20% of your purchase will go to honor the Rabbi's Bike Ride. (Gift card purchases yield 10%). Be sure to present the Dine & Donate flyer with your order! It's available in the office or at [www.bethamir.org](http://www.bethamir.org).



## Inside

- 3 ..... Carolyn's Comments
- 4-5 .... Events & Announcements
- 6 ..... August Calendar
- 7 ..... Task Force Update & USY
- 8 ..... Israel from the Left Coast
- 8 ..... Mitzvah Moments
- 9 ..... Religious School Report
- 9 ..... Literary Lines
- 10 ..... Yahrzeits/Birthdays/Anniversaries
- 11-12 .. Generous Contributions
- 13-15.. Advertisements
- 15 ..... Community Events
- 15 ..... Event RSVP Form
- 16 ..... August Services

# Congregation Beth Ami

4676 Mayette Avenue

Santa Rosa, CA 95405

Telephone: (707) 360-3000

Fax: (707) 360-3003

Email: [office@BethAmiSR.org](mailto:office@BethAmiSR.org)

Website: [www.BethAmiSR.org](http://www.BethAmiSR.org)

**We're on Facebook! Please join our online community – [www.facebook.com](http://www.facebook.com) then search for Congregation Beth Ami, Santa Rosa!**

## Hours of Operation

### Beth Ami Main Office

Monday-Friday 10 AM - 4 PM

### Library

Contact Ruth Rosenberg, 544-2919 for an appointment.

### Gift Shop

Contact the office, 360-3000, for an appointment.

## Officers and Board of Directors 2010-2011

**Patty Bernstein**, *President*, [basberyl@sonic.net](mailto:basberyl@sonic.net)

**Al Batzdorff**, *VP Administration*, [abatz@sonic.net](mailto:abatz@sonic.net)

**David Ballo**, *VP Facilities*, [klezhead@yahoo.com](mailto:klezhead@yahoo.com)

**Danella Lubar**, *VP Fundraising*, [dnlubar@yahoo.com](mailto:dnlubar@yahoo.com)

**Bonnie Boren**, *VP Youth and Education*,

[bonniegboren@gmail.com](mailto:bonniegboren@gmail.com)

**Henry Cohn**, *Treasurer*, [henry.cohn@rocketmail.com](mailto:henry.cohn@rocketmail.com)

**Barb McGee**, *Secretary*, [barbara.mcgee@ffic.com](mailto:barbara.mcgee@ffic.com)

**Richard Kahn**, *Membership Committee*,

[earthin@sonic.net](mailto:earthin@sonic.net)

**Gabor Por**, *Library Committee*, [gaborpor@yahoo.com](mailto:gaborpor@yahoo.com)

**Betty Boyd**, *Religious Practices Committee*,

[bettyboyd@informingscience.org](mailto:bettyboyd@informingscience.org)

**Mieneke Drake**, *Member-at-large*, [gidrdrake@gmail.com](mailto:gidrdrake@gmail.com)

**Mark Sutter**, *Member-at-large*, [drmarksutter@vom.com](mailto:drmarksutter@vom.com)

**Heath Winer**, *Member-at-large*, [heath@humanloom.com](mailto:heath@humanloom.com)

**Rabbi George Schlesinger**,

*Member Ex Officio*, [rabbi@bethamirs.org](mailto:rabbi@bethamirs.org)

**Carolyn Metz**

*Member Ex Officio*, [execdirec@bethamirs.org](mailto:execdirec@bethamirs.org)

## Personnel

**Rabbi George Schlesinger** 360-3004

[rabbi@bethamirs.org](mailto:rabbi@bethamirs.org)

**Carolyn Metz, Interim Executive Director** 360-3011

[execdirec@bethamirs.org](mailto:execdirec@bethamirs.org)

**Bookkeeper** 360-3012

[bookkeeper@bethamirs.org](mailto:bookkeeper@bethamirs.org)

**Caroline Calvert & Robyn Fisher-Tachouet**

**Nursery School Co-Directors** 360-3030

[ns@bethamirs.org](mailto:ns@bethamirs.org)

**Rick Concoff, Chaverim Director** 823-3916

[chaveriminfo@yahoo.com](mailto:chaveriminfo@yahoo.com)

**Karen Gould, Newsletter** 360-3000

[newsletter@bethamirs.org](mailto:newsletter@bethamirs.org)

**Jennifer Hayes, Religious School Assistant** 360-3000

[rs@bethamirs.org](mailto:rs@bethamirs.org)

**Elizabeth Jarlsberg, Administrative Support** 360-3000

[office@bethamirs.org](mailto:office@bethamirs.org)

**Gabor Por, Librarian** 360-3006

[library@bethamirs.org](mailto:library@bethamirs.org)

**Susy Raful & Helen Margolese, Gift Shop** 360-3022

**Sarah Stein, USY Advisor**, [scusy@bethamirs.org](mailto:scusy@bethamirs.org)

**Ruth Turner, Friedman Center Director** 360-3021

[ruth@friedmaneventcenter.com](mailto:ruth@friedmaneventcenter.com)

**Call the office at 360-3000 to leave a message for:**

- ▶ Leanne Schy, Torah/Haftarah Readings
- ▶ Andrea Nett, Catering Director
- ▶ Edythe Smith, Invitations, 538-3698

## Congregation Beth Ami Mission Statement

Through celebration, learning, prayer and community, we seek to enrich our lives, transform our hearts, help heal the world and sustain our Jewish heritage.

## Congregation Beth Ami Vision

A vibrant, growing campus for Jewish living where the joys of Jewish values and rituals are made accessible and relevant to the everyday lives of our members. A flourishing, prospering congregation enjoying the wholehearted support, commitment and involvement of all our members.

## Deadline for September Shofar: August 16

All editorial submissions must be received in the Shofar box in the Beth Ami office or via email on or before the deadline. All submissions are subject to editing for clarity, brevity and content. Please submit articles as Microsoft Word documents via email attachments. Contact Karen Gould, 360-3000 or [newsletter@bethamirs.org](mailto:newsletter@bethamirs.org) with corrections, concerns or questions.

The Shofar is a periodical issued monthly except for a combined June & July issue. It is published by Congregation Beth Ami, 4676 Mayette Avenue, SR, CA 95405. All members in good standing receive the periodical free. Yearly subscriptions are \$25.00.

This month's issue is: Volume 15, Issue 10

Issue Date: August 1, 2010



## CAROLYN'S COMMENTS

Carolyn Metz, Interim Executive Director

Dear Members of Beth Ami,

These may seem like the lazy days of summer to you, but I already feel the urgency of the upcoming High Holidays. It will be less than eight weeks until we are together welcoming the New Year on Rosh Hashanah!

- ❖ Please, when you get your **Membership Renewal** letter in the mail **open it, respond as generously as you are able, sign it and return it to the office asap.** Membership is the basis upon which we run the organization and provide essential services to you. If we don't know who and how much we can count on, we start operating with an unbalanced perspective. Help us reach for strength, balance and flexibility. You count on us as we do you!
- ❖ In addition, you have received your **Religious School** registration packets. Again, please communicate with **Pnina Loeb**, Religious School Director and Teacher so she knows what to expect when Religious School starts on September 12. I know Pnina is planning a special welcome for parents and families.
- ❖ Soon after your Membership letters will come the **High Holiday** packets. This year, **5771, Erev Rosh Hashanah is September 9.** We welcome you and look forward to including you in services and other activities during the High Holidays.
- ❖ Several members of the **Task Force for the Future of Beth Ami** have created a **survey** that will be in the hands of every member, some former members, Nursery School staff and families by the end of July. Most of you will receive it by email and the survey can be taken online (estimated time

"I enjoyed reading *Monday Musings* more than anything that has been sent to me by Beth Ami in a long time.

I will continue to read these musings, no matter which day they appear.  
Thank you for breathing fresh air into 'our beloved shul.'  
~Congregant

**Are you reading the *Monday Musings*?  
Do you have something to add?  
Contact Carolyn Metz directly at  
[execdirec@bethamisl.org](mailto:execdirec@bethamisl.org).**

15 minutes). Those who don't interface online will receive a hard copy. ***Responses to the entire survey will be anonymous. We want your candor and honesty when responding to questions.*** This survey will inform many of the recommendations that are developed by the Task Force. We urge you, invite you, want you to tell us what you're thinking/feeling on a variety of issues. In fact, we care so much, you will likely receive a call from either a Board Member or Task Force Member, reminding you to respond. We won't know if you have (it's anonymous, remember?) so we have to call everyone!

- ❖ Don't miss another opportunity to support the extraordinary feat of Rabbi riding across America: **Dine and Donate at Mary's Pizza Shack on August 4.** You can download the flyer at [www.bethamisl.org](http://www.bethamisl.org) or pick one up in the office.
- ❖ Here's an opportunity to work and play alongside our friends at Shomrei Torah: **Join us on August 11** for a co-sponsored (by Congregations Beth Ami & Shomrei Torah) informational event at Congregation Shomrei Torah regarding the **Southeast Greenway project.** You'll find details on the cover, or contact **David Ballo** for more information: [klezhead@yahoo.com](mailto:klezhead@yahoo.com).
- ❖ Finally, is there anyone in the congregation who is a website designer? Marketing czar? Can we talk?

Any questions or comments are always welcomed.

Best, Carolyn 360-3011 or [execdirec@bethamisl.org](mailto:execdirec@bethamisl.org).



## EVENTS & ANNOUNCEMENTS



### Welcome to our new members:

Betty Kale, Shirley Blum, and Ishie Petlock

### Mazal tov to:

Malvina Tsipan's grandson, Victor Reznikov, on his graduation from UCLA.

### Misheberach

Bless those in need of healing with refu'ah sh'layma  
The renewal of body, the renewal of spirit  
**Leo Gurevitch, Helen Margolese, Lydia Ross, Dave Rubin, Rosalie Schweit**

### Directory update

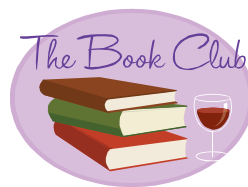
**Gail Negrin** has a new address:  
1714 Happy Valley Road  
Santa Rosa, CA 95409

**Rose Batzdorff** has a new e-mail address:  
[rose@prosthetika.org](mailto:rose@prosthetika.org)



### Beth Ami offers sincere condolences to:

**Vivian Salmon** and her family on the sudden passing of her brother, Richard Max Lachman, in Seattle, Washington.



### Book discussion group news

Our final meeting of the season took place on July 7 at the home of the Batzdorffs, 3051 Las Mesitas Court in Santa Rosa. As is by now traditional, this meeting combined discussion with a festive potluck luncheon. The book discussion of *Songs for a Butcher's Daughter*, by Peter Manseau, was led by **Gabor Por**. Twelve people attended, and we enjoyed all the delectable dishes.

On **Wednesday, August 11 at 10 am** we will have a planning meeting for our next season, the 28th year of our existence. Come and contribute your ideas to make next year the best ever. Or, if you cannot be there, send your suggestions to Susanne at [sbatz@sonic.net](mailto:sbatz@sonic.net) or call her at 538-9731. Have a healthy and enjoyable summer.

### Rosh Chodesh: Celebrating the new moon with other Jewish women



The first of each Jewish month—the celebration of the new moon, its slender crescent barely visible in the night sky—is a day historically associated with women's renewal and celebration.

Our next celebration will occur on **Wednesday, August 11 at 7 pm** at Congregation Beth Ami when we'll begin our preparation for the Holidays. Nothing says Rosh Hashanah like apples—and we'll celebrate the bounty by making applesauce, which is spectacular for Chanukah as well! We'll meet in the Social Hall and use the kitchen facilities for cooking. Contact Patty Bernstein with questions or RSVPs ([basberyl@sonic.net](mailto:basberyl@sonic.net) or 546-6043.)

### Mark your calendar for Rosh Chodesh gatherings in 5771

Tishrei	Sunday	Sep 26	12 noon
Cheshvan	Thursday	Oct 7	7 pm
Kislev	Sunday	Nov 7	12 noon
Tevet	Wednesday	Dec 8	7 pm
Sh'vat	Wednesday	Jan 5	7 pm
Adar I	Thursday	Feb 3	7 pm
Adar II	Sunday	Mar 6	12 noon
Nissan	Sunday	Apr 3	12 noon
Iyar	Wednesday	May 4	7 pm
Sivan	Thursday	Jun 2	7 pm
Tammuz	no gathering - July 4th weekend		
Av	Monday	Aug 1	7 pm
Elul	Monday	Aug 29	7 pm

### Ongoing programs at Beth Ami

♦ **Israeli Folk Dancing**, Tuesdays, 6:30 PM, Friedman Center. For more info contact Leanne Schy at 528-4874 or [Leanne@sonic.net](mailto:Leanne@sonic.net).

♦ **Midrash Study with Rabbi Schlesinger**, 2<sup>nd</sup> & 4<sup>th</sup> Tuesdays, 10 AM. Classes resume in August.

♦ **Torah & Talmud Study with Rabbi Schlesinger**, Thursdays, 7 PM Friedman Center Board Room. Classes resume in August.





## EVENTS & ANNOUNCEMENTS

*With Thanks*

Thank you everyone for your kindness and love shown to me since the passing of my beloved son, Anatol. I am grateful for all of the condolence cards and donations in his memory to Beth Ami. A special thank you to **Judi Hyman, Bernice Fox, Francie Rogovin and Susanne Batzdorff**, for preparing such a lovely lunch. Thank you to everyone for honoring Anatol's life by attending his memorial service.

~Sheyna Bakman

Thank you to everyone for the donations and kindnesses in Everett's memory.

~The Shapiro family

It was a great birthday celebration for me. Thanks to all my family and friends at Beth Ami. Thank you!

~Sylvia Sucher

### "Third Sunday Minyan" – August 15

We've newly re-invigorated the morning minyan program, one Sunday per month. Called the "Third Sunday Minyan," this service is held at 8:30 am on—what else?—the third Sunday of the month. Hosting duties are shared by attendees, so a light breakfast is provided after services—treats like bagels, toast, croissants, juice, and coffee. Join the minyan and nourish your body and soul!



**Come for a special treat on August 15 when we'll blow the Shofar during the month of Elul!**

### Learn to blow the Shofar

You, too, can blow the Shofar at the synagogue these High Holy Days! Everyone is invited. Want to learn how? **Join us at Beth Ami on Sunday, August 22 and/or August 29 at 10 am.** Bring your Shofar if you have one. If not, contact the gift shop about purchasing one. (A few extra will be available for use at the sessions.) See the one-minute video highlighting last year's session at <http://www.youtube.com/watch?v=NtQ-x2fJnRM>.

This will be followed at **11 am** by going through some of the congregational melodies for High Holy Day prayers.

Adults and children welcome.

Contact Eli Cohen at 537-2211 or [EliCohen@InformingScience.org](mailto:EliCohen@InformingScience.org) if you have any questions.



Congregation Beth Ami wants to thank the Jewish Community Federation of San Francisco, the Peninsula, Marin and Sonoma Counties, for its generous ongoing support of the Beth Ami Nursery School with a grant for the upcoming school year. We have all been impacted by the economic downturn, even the Federation's Annual Campaign, which is the backbone of a vibrant Jewish community, making this grant all the more precious. We couldn't do it without you!

### eScrip update

Nancy Sherman



### THANKS TO ALL OF OUR SUPPORTERS!

For the first five months of 2010 (latest data reported), eScrip supporters have collectively contributed \$632.25 to Beth Ami. If you are not a part of this easy way to help Beth Ami, join us NOW

We are up to 149 members and friends of Beth Ami who are making contributions just by doing their regular shopping at stores such as Safeway & Oliver's. Are you on eScrip?

Very recently Oliver's Market joined eScrip. Make sure you are getting eScrip credit for your purchases at Oliver's, which will provide CBA with up to a 5% contribution. Use your eScrip registered credit and/or debit card to make your purchases. Current supporters just go to their eScrip account and add additional cards if needed.

If you are not yet on eScrip, here's how to sign up: go to [www.eScrip.com](http://www.eScrip.com) and designate Congregation Beth Ami in Santa Rosa, ID#136921119 to receive contributions. To sign up offline, there is a form in the office as well as on our website. Just fill it out and return it to the office and we will sign you up.

If you need help to sign up or have any eScrip questions, contact Nancy Sherman at 538-9388 or [enshermn@pacbell.net](mailto:enshermn@pacbell.net) or call Lauren Newman at 525-9029.



I need (a little) storage space for (perhaps) twenty cardboard boxes (mostly papers, nothing perishable or dangerous) and (maybe) three or four suitcases (of clothes) while I am away in the Peace Corps in the Philippines for two and a half years. I'm leaving in mid-August.

Hopefully, if more than one person responds, no one will have to store very much. If interested in helping, please contact Bruce Stolbov at 545-4071 or [stolbov@sbcglobal.net](mailto:stolbov@sbcglobal.net).

# CONGREGATION BETH AMI | AUGUST 2010

Sunday	Monday	Tuesday	Wednesday	Thursday	Friday	Saturday
1	2	3	4	5	6	7
	Office Open 10am-4 pm	Office Open 10am-6pm 7 pm - Executive Committee	Dine & Donate at Marv's Office Open 10am-4 pm	Office Open 10am - 4pm	Office Open 10am-4 pm 6pm - BBQ & Barchu 7:30pm - Erev Shabbat 7:58pm - Candle lighting @ 8:30pm - Oneq	10am - Shabbat Services 12pm - Hosted Luncheon in 8:57pm - Havdalah (42)
8	9	10	11	12	13	14
	Office Open 10am-4 pm	Office Open 10am-6pm Rosh Chodesh Elul @ 5:45pm - TFF Mtg. @ Multi- 6:30pm - Israeli Dancing @	Office Open 10am-4 pm Rosh Chodesh Elul @ 10am - Book Discussion 7pm - Rosh Chodesh 7pm - Southeast Greenway	Office Open 10am - 4pm	Office Open 10am-4 pm 7:30pm - Erev Shabbat 7:50pm - Candle lighting @ 8:30pm - Oneq	10am - Shabbat Services 12pm - Potluck Luncheon 8:49pm - Havdalah (42)
15	16	17	18	19	20	21
8:30am - Mornina Minvan	Office Open 10am-4 pm	Office Open 10am-6pm 7 pm - CBA Board Meeting	Office Open 10am-4 pm	Office Open 10am - 4pm	Office Open 10am-4 pm 7:30pm - Erev Shabbat 7:41pm - Candle lighting @ 8:30pm - Oneq	10am - Shabbat Services 12pm - Potluck Luncheon 8:39pm - Havdalah (42)
22	23	24	25	26	27	28
10 am - Shofar Blowing	Office Open 10am-4 pm	Office Open 10am-6pm 6:30pm - Israeli Dancing @	Office Open 10am-4 pm	Office Open 10am - 4pm	USY Leadership Training @ Congregation Beth Ami Office Open 10am-4 pm 7:30pm - Erev Shabbat 7:31pm - Candle lighting @ 8:30pm - Oneq	10am - Shabbat Services 12pm - Potluck Luncheon 8:30pm - Havdalah (42)
29	30	31	1	2	3	4
USY Leadership Training @ 10 am - Shofar Blowing	Office Open 10am-4 pm	Office Open 10am-6pm	Office Open 10am-4 pm	Office Open 10am - 4pm 8:45am - TFF	Office Open 10am-4 pm 6pm - Shabbat Dinner 7:21pm - Candle lighting @ 7:30pm - Erev Shabbat 8:30pm - Oneq	10am - Shabbat Services 12pm - Potluck Luncheon 8:19pm - Havdalah (42)



## UPDATE: TASK FORCE FOR THE FUTURE (TFF)

Patty Bernstein

As you read this August *Shofar*, the Task Force for the Future (TFF) will have had their second meeting, so I wanted to “brief you” to let you know that we’re making progress.

Our first benchmark task has involved coming to a common understanding of the purpose, core values, vision and primary goals for Congregation Beth Ami. Discussions are lively, insightful, and full of discovery—with more than a few “aha” moments for each member of the group. Our homework includes self-reflection, evaluation, communication, and research.

In addition to the work that each of us has done on our own—and that BuildingBlox Consulting has guided, a sub-committee of the Task Force developed a *confidential and anonymous* survey that will help inform the work of the task force. The survey should already be in your hands (if all goes according to plan). If we have an email address for you, you’ve received an electronic invitation to complete the survey online. Hard copies of the survey have been mailed to those without email access. Help us move forward with *real information* from congregants.

You may recall that the goal of this task force is to provide the Board of Directors with a strategy for a sustainable and thriving Congregation Beth Ami. Here’s your chance to let us know about your experience at Beth Ami and what’s important to you—by **completing the survey as soon as possible!** Your input is crucial to the future of our synagogue. We look forward to hearing from you!

## HOST FAMILIES NEEDED

Nancy Sherman

Congregation Beth Ami is pleased to be hosting the New Frontier USY’s Leadership Training Institute (LTI) the weekend of **August 27-29**. There will be approximately 60 Jewish teens (chapter & regional officers) and staff from around northern California and Reno who will be attending to learn, celebrate Shabbat and network.

As the host congregation we are asked to provide host homes for USYers and staff for Friday and Saturday nights. This will include providing transportation to and from Beth Ami. We hope to have a few homes that are walking distance for those teens who observe Shabbat.

Thanks to those of you who graciously opened your homes this past April for the regional USY Social Action/Tikkun Olam (SATO) Shabbaton. The region was so impressed with the warmth and generosity of our congregation that we were asked to host LTI. This is one of several USY regional events that are hosted at various congregations around the Bay Area throughout the year and we are honored to be selected.

If you are interested and able to provide home hospitality, please reply to with the following information:

Name, best contact phone number(s), number of teens or staff you would be willing to host, any preferences.

If you have any questions, please contact Nancy Sherman at 538-9388 or [enshermn@pacbell.net](mailto:enshermn@pacbell.net).

**Thank you so much for your support of  
United Synagogue Youth!**

## BETH AMI JUDAICA GIFT SHOP

**A  
GREAT  
place to  
shop for  
Judaica gifts  
& ritual items**



**SUMMER HOURS BY APPOINTMENT  
360-3000**

## SIMCHA BOARD

**LEAF \$360**  
**SMALL STONE \$1000**  
**LARGE STONE \$2500**



We also provide the opportunity  
for you to memorialize loved ones on  
our

## Yahrzeit Board

**A PLAQUE IS \$450**



## ISRAEL FROM THE LEFT COAST

Bob Raful

This virtual visit to Israel each month is almost always about people IN Israel. This month is also about people, Israelis, but IN America, not in Jerusalem.

Explanation: Our oldest grandchild, Sarah, is Director of an old established Jewish summer camp in the Pocono Mountains, Pennsylvania. As usual there are about a dozen young Israelis, spending their summer on the counseling staff.

In July, I had a chance to visit Camp Poyntelle, and, while there, Sarah let me talk to two of her favorite Israelis. Here is their story:

This is the second camp year for Ido. Last year he was a combat infantryman in an IDF Nahal unit. Partly because he grew up in the Israeli Scout Movement, I think, he was selected for a special outreach program operated by the Jewish Agency. The program involved extensive workshops on "telling the Israel story" and training on the fine points of being role models for the young campers. Despite his scouting experience, Ido expressed somewhat of a cultural shock when introduced to American East Coast Jewish youngsters last year (I confess this may reflect a California view of East Coast Jewish culture).

Despite that, Ido, as do the other Israelis, combines his regular "evening cabin counselor" job with a highly skilled Specialist position. His is the daunting responsibility of being in total charge of the ropes course, one of camping's real challenges.

Ido completed his initial active IDF duty last November. He obviously enjoyed the summer experience enough that he has delayed the typical post-Army world travel routine; recruited his best friend, Daniel, also finishing his three year active duty; and they were both accepted for the 2010 Summer Camp program.

Daniel and Ido grew up on the same block in Modi'in (half way between Jerusalem and Tel Aviv). Their parents are Sabras and they have the same grandfather lineage – Bulgaria. Their grandmothers came from Uruguay and Morocco (Does the phrase "melting pot" come to mind)?

Daniel confessed that he had a thankless three year duty tour, serving on the West Bank. His unit protects settlements; dismantles illegal settler expansion attempts, works on Palestinian protest activity; and generally tries to keep the two sides separated. Consequently, they are hated by everyone.

At Poyntelle, Daniel has the much more rewarding task of coaching several levels of boys' basketball. He does it well.

I had the impression they are both having fun. However, they remarked that being an Israeli soldier can be touchy at times. Questions like "How many Arabs did you kill?" "How often did you use your gun?" Of course, these are probably not unusual questions from young boys. But it is uncomfortable. My sense – these Israeli guys cope well.



## MITZVAH MOMENTS

Tish Levee

**Reduce, recycle, rethink**, reads a sign in Safeway. That last word is crucial. This year, with nearly 7 billion people in the world, we've pumped over 16 billion barrels of oil and emitted nearly 15 billion tons of CO<sub>2</sub> into the atmosphere. In the future the price of oil and other fossil fuels will continue to rise, water will become even scarcer, and our atmosphere will become more polluted unless we find new ways to live on this planet.

Even as glaciers are melting and sea levels are rising, we just don't seem to "get it" that we can't continue our addiction to oil. If the disaster in the Gulf of Mexico finally causes us to wake up and rethink our options, we may be able to head off the disasters that will follow if we don't.

We have the technology and ability to make changes, and even small changes can make a big difference. For instance, if every household in the U.S. replaced just one light bulb with a compact fluorescent light (CFL), it would be the equivalent of taking 1.3 million cars off the road.

**An Inconvenient Truth.** I didn't think I would learn anything new from watching this movie—in my case I thought Al Gore would be "preaching to the choir." I was surprised at what I learned, and the presentation was superb. I highly recommend this DVD. Be sure to watch the credits—there are all kinds of "mitzvah moments" interspersed in them.

**With the economy on the skids**, it's not surprising that charitable donations are down. But it is surprising that donations that don't cost any money are down, too.

**In the first Mitzvah Moments, May 2007**, I wrote about the Greater Good Network, suggesting donating daily by clicking on [www.thehungersite.com](http://www.thehungersite.com), [www.thebreastcancer-site.com](http://www.thebreastcancer-site.com), [www.thechildhealthsite.com](http://www.thechildhealthsite.com), [www.theliteracysite.com](http://www.theliteracysite.com), [www.therainforestsitesite.com](http://www.therainforestsitesite.com), and [www.theanimalrescuesite.com](http://www.theanimalrescuesite.com). Even though clicking on all six sites takes less than a minute and costs nothing, donations at all these sites—except for the animal rescue site—declined up to 14% in 2009. Please click daily and think about shopping at these sites, too.

**In another column**, I shared how playing a free online game helps feed hungry people. Since October 2007 people playing [www.freerice.com](http://www.freerice.com) have donated 80.6 billion grains of rice, but in 2009 the number of grains donated fell by more than 50%. Take a ten-minute break, play different games at [freerice.com](http://freerice.com) and feed someone.

© Copyright Tish Levee, 2010. All rights reserved





## RELIGIOUS SCHOOL REPORT

Pnina T. Loeb

Religious School Director



## LITERARY LINES

Gabor Por

**Welcome to the new school year that begins on Sunday, September 12.** We are starting with a handful of traditional of holidays: Rosh Hashanah, Yom Kippur, Sukkot, and Simchat Torah. We will gather, pray, shake the etrog and lulav, dance, and eat together.

**All families and students are invited to join the entire Religious School for a communal breakfast,** Sunday morning at 9:00 am. It will be potluck. Please bring a non-meat dish to share! We will provide coffee, orange juice and milk. After our meal we will gather for a short assembly, and then school will begin. Your children will be ready for pick-up at 12 noon as usual.

Shortly after the holidays quiet down we are planning a new program where our students will join together with other Jewish students in Sonoma County. This programming will include social, cultural, ethnic, and religious activities. It will be scheduled on a regular basis and **open to all 3<sup>rd</sup>-7<sup>th</sup> graders.** This will be an exciting year filled with learning, laughter, friendships, and celebration!

### Sylvia Sucher and family celebrate her 98<sup>th</sup> birthday.



I hope you had a great summer; welcome back. I cannot guess how many of you, and to what extent, wondered the last few months about ***The Moral Meaning of the Bible***. I bring it up because whether you did or not the library has an inspiring new resource in helping you to do so. The two volumes, bearing the aforementioned title, written by professor **Reuven Kimelman** contain a full course on the topic. For each of the 16 sessions you will find a 30-minute long recording on eight CDs and in the books a short introduction, a whole biblical passage (in English) and a mindmap. This combination of resources ensures that no matter what your learning style is (visual, auditory or text based) you will be able to learn from this course. In case you are not familiar with the term mindmap this book introduces it as “a technology for representing information in a colorful radial format.”

In this case each mindmap summarizes a single session in an elaborate, consistent and clear way. I found them a great tool for studying. The course was published by an organization called “Our Learning Company” and its focus is indeed on learning. The course can be taken alone, with your family, chavurah or with any group. I can wholeheartedly recommend these sessions for anyone; it could be a great preparation for entering the holiday season too.

As I prepare for the High Holidays I am starting to think about all the actions I need to atone for. The list also includes inactions: the times I have misused, the opportunities of doing something good that I wasted. If you share my regret over misused times I have a suggestion of how to make next year better. Use your time to volunteer at the library.

**Ruth Rosenberg** did it for many years. She not only covered the Tuesday afternoon shifts she also made herself available to help patrons by appointments over several summers. I would like to thank her for her devoted service to the library users within and outside the Beth Ami community. Now she is ready to pass the baton to somebody else. The times you have squandered in the past could be used for helping others with their literary, educational or entertainment needs. This is the time to think about whether you could volunteer at the library. If you're inclined drop us a note at [library@bethamir.org](mailto:library@bethamir.org).



## AUGUST Yahrzeits

Secular dates correspond to Hebrew date of death.

Observance of yahrzeit begins at sundown the previous day.

All yahrzeits observed at Beth Ami

### *Announced on August 6 & 7*

August 9	Oscar Pinsky	Father of Dorothy Gerstein
August 10	Alice Miller	Mother of Susan Miller
August 10	Josephine Sherman	Mother of Ed Sherman
August 11	Clarence Rambo	Grandfather of Hope Rambo
August 12	Rosalind Pimsler	Mother of Laura Duggan
August 13	Vladimir Zelichenok	Brother of Rimma Rivkin

### *Announced on August 13 & 14*

August 14	Lillian Gordon	Sister of Mazie Miller
August 14	Joseph Raful	Father of Bob Raful
August 15	Herbert Herritt	Husband of Rosalind Herritt
August 16	Irving Welch	Father of Ron Welch
August 18	Ethel Bromberg	Sister of Helen Dresser
August 18	Myrna Drake	First Wife of Arnold Drake
August 18	Irving Gordon	Father-in-Law of Dave Rubin
August 18	Joyce Vrobel	Mother of Laura Alexander
August 19	Emil Tsipan	Husband of Malvina Tsipan
August 20	Dorothy Drain	Grandmother of Janet Stein-Larson

### *Announced on August 20 & 21*

August 21	Ellie Negrin	Husband of Gail Negrin
August 22	William Hahn	Father of Edith Newman
August 23	David Katz	Father of Audrey Darby
August 23	Selby Morse	Husband of Myrna Morse
August 24	Susan Yelin	Mother of Francie Rogovin
August 25	Arthur Karr	Father of Noor Karr
August 26	Audrey Schoen	Sister of Phyllis Shapiro
August 26	Lester Schweit	Husband of Rosalie Schweit
August 27	Robert Karr	Brother of Noor Karr
August 27	Martin Klein	Brother of Ricki Streitfeld
August 27	Angela Kupperberg	Wife of Michael Kupperberg

### *Announced on August 27 & 28*

August 28	Dan Ben Hershel	Nephew of Evelyn Gurevitch
August 29	Barbara Wallace	Sister of Arnold Drake
August 30	Joshua Cohen	Father of Leonard Cohen
August 30	Peter Duchon	Father of Barbara Duchon
August 30	Morris Marks	Grandfather of Myrna Morse
August 31	Vivian Frye	Friend of Congregation Beth Ami
August 31	Arther Root	Father of David Root
September 2	Emil Judd	Husband of Lillian Judd
September 2	Shirley Kafton	Mother of Alan Kafton
September 3	Fritzi Jacob	Sister of Elsie Rich
September 3	Naftali Morse	Father-in-Law of Myrna Morse
September 3	Evelyn Root	Mother of David Root

## A leaf for Anne Mann

If you remember Anne Mann's incredible challah, her beautiful voice leading services and chanting Torah, or her funny—sometimes inspiring—emails, consider making a contribution to Beth Ami in her memory. Her first Yahrzeit is on 5 Tishrei—September 13; let's mark it with a leaf on the Simcha Board. Make sure the office knows your donation is for Anne's leaf.



## Birthdays in August



1	Dylan Cohen
1	Aiden Flugger
1	David Root
1	Tad Shapiro
2	Robert Pleasant
3	Alan Kafton
3	Rieve Rockwell
4	Suzie Friedman
6	Elsie Rich
7	Jacob Kreger
7	Mortimer Weiss
8	Howard Moss
8	Mark Rosen
10	Jonathan Kreger
10	Marilyn Salsman Stockfleth
10	Pat Thomas
11	Barbara Duchon
11	Dr. Mark Sutter
12	Beverley Cohen
12	Lyla Nathan
12	Robin Winning
13	Jacob Pickar
14	Francie Rogovin
14	Stuart Schy
15	Michael Shapiro
16	Sydney Perlman
17	Susy Boimoil
17	Carol Renee Wardwell
18	Sara Castaldo
21	Zach Cohen
21	Gabor Por
24	Jodi Cohen
24	Signe Minuskin
25	Susan Miller
26	Marc Bernstein
27	Nicholas Alexander
27	Gregory Sacher
29	Ella Bernstein
29	Larry Klapow
29	Paul Kobetz
30	Jennifer Hayes
30	Patrice LePera
31	Randy Mann

## Anniversaries in August



2	Joelle & Mark Burnette
2	Carol & Brad Wardwell
5	Arnold & Mienke Drake
8	Adolf & Sarah Tyutinman
11	Michael & Lauren Newman
12	Brian & Fredrika Gross
12	Dan & Blair Pleasant
13	Jonathan & Valerie Kreger
16	Bill & Kim Cordell
25	Sanford & JoAnne Bressick
25	Len & Elly Cohen
31	Harvey & Danella Lubar





## GENEROUS CONTRIBUTIONS TO OUR CONGREGATION

The next time you are looking for a meaningful way to celebrate a joyous occasion, remember a loved one, or comfort a mourner, please consider a donation to Congregation Beth Ami. When you make a gift, a card is sent to the honoree or the family and your donation is proudly acknowledged in the Shofar. The minimum donation for each occasion is \$7.50. Congregation Beth Ami truly appreciates your support.

### GENERAL FUND

In memory of Sandor Garam

**Jon & Rose Batzdorff**

In memory of Anatol Bakman

**Irina Nekrina**

Happy 63<sup>rd</sup> anniversary to Susy & Bob Raful, who give themselves without stint.

In memory of Jon Simkovitz

Happy birthday to Ruth Rosenberg

**Sylvia Sucher**

Happy birthday to Helen Dresser

Happy birthday to Harry Hankin

In honor of Sylvia Sucher's birthday

In honor of Marilyn Diamond's birthday

In memory of Betty Kale's dear husband, Harold

In memory of Jon Simkovitz

**Edith Newman**

In memory of George Conklin

**Ira & Ruth Rosenberg**

In blessed memory of Everett Shapiro

In blessed memory of Jon Simkovitz

Refu'ah sh'layma to Billy Friedman

**Henry Cohn**

With fondest memories of Jon Simkovitz

**Phil Weil & Bonnie Boren**

A generous donation

**Darrell Watkins**

In memory of my brother-in-law,

Benny Friedman

Happy birthday to Helen Dresser

Happy birthday to Patty Bernstein

**Sydney Perlman**

A thoughtful donation

**Marilyn & Martin Graff Reis**

In honor of Harry Hankin's 95<sup>th</sup> birthday

**Dave Rubin**

In memory of Ben Margolese

**Art Margolese**

A generous donation

In memory of my sister, Golda Nemchenko

**Sarah Tyutinman**

In honor of Bob & Susy Raful's anniversary

**Melissa Bloom**

Thank you to Marge, Dave, and Avi Ballo for misheberach for my healing

Thank you to Jane Meyer & Bonnie Boren for bringing me lunch and to Jane for calling to cheer me up

Thank you to Nancy, Ed, & Daniel Sherman for bringing us Shabbat dinner

Thank you to Pat & Bill Thomas for cheerful phone calls and delicious dinners

Thank you to Bonnie Boren for misheberach for my healing

Thank you to Richard Kahn & Anne Brown for misheberach for my healing

Thank you to Ellen & Dr. Herb Brosbe for misheberach for my healing

Thank you to Sylvia Sucher for misheberach for my healing and phone calls to cheer me

Condolences to Sheyna Bakman on the passing of her son, Anatol Bakman

Condolences to the family of Everett Shapiro on his passing

Condolences to Melissa Bloom on the passing of her grandmother

Happy anniversary to Harold & Barbara Boren, Jane Meyer & Alan Krubiner, Abigail

Zoger & her husband, Susy & Bob Raful

Happy birthday to Helen Dresser,

Ira Rosenberg, Stella Por, Daniel Sherman, Sylvia Sucher, Henry Cohn, Patty Bernstein,

Susy Raful, Andrea Nett

Mazel Tov to Kirsten & Asher Miller on the birth of their son, Eli

**Susan Miller**

In memory of my mother, Maria Umanskay

**Sofya Pekker**

In memory of Jon Simkovitz

In memory of Tom Fleming

**Andy & Nancy Fleming**

A generous donation

**North Coast Tile & Stone**

Mazel Tov to Eli & Yona Miller on the birth of their newest grandson

Mazel Tov to Elisabeth Van Nuys and family on the birth of their grandchild, Samuel

Condolences to the Simkovitz family on Jon Simkovitz's death

Speedy recovery to Helen Margolese

In memory of Oscar & Betty Mann, Marge's parents

**The Ballo Family**

In memory of Jon Simkovitz

**Richard, Anne & Leah Kahn**

In memory of Lucille Lachman

**Vivian Salmon**

In memory of Uncle Lou Stein

In memory of Elisabeth Van Nuys' new grandson

In honor of Sylvia Sucher's birthday - from strength to strength

**Susy & Bob Raful**

In memory of Sheyna Bakman's great loss, her son and daughter-in-law

In memory of Miriam Wald's mother

In honor of Carolyn Metz's community building and inspiring leadership

**Barbara Tomin**

In memory of Harold Kale

**Pat & Bill Thomas**

In memory of Stanley Friedman

In honor of Sylvia Sucher's birthday

Thank you to Susan Miller for all your help

**Natalie Friedman**

In memory of Harold Kale

**Raynore Paule**

In honor of Sylvia Sucher's birthday

**Juli Scherer**

**Betty Kale**

**Sheyna Bakman**

**Pat & Bill Thomas**

**Chip & Jane Carnathan**

In memory of my mother, Fanny Blau

**Shari Kafton**

In honor of Sylvia Sucher's birthday

Congratulations to Sophia Schwaber-Gross for making the Maccabiah swim team

In memory of Bertha Schy

**Stuart & Ethel Schy**

In memory of Hisel Pekker

**Semyon Pekker**

In memory of Jon Simkovitz

**Juli Scherer**

In memory of Anatol Bakman

**Ada & Stanley Press**

In memory of Richard Hyman

**Judi Hyman**

In honor of Yona & Eli Miller's new grandson

In memory of Anatol Bakman

In honor of Susy & Bob Raful's new great-granddaughter

**Elisabeth Van Nuys**

### HARRIS FUND

In honor of the high school graduation of Ben Jones, Jacob Kreger and Haley Pleasant

In honor of the college graduation of Azlan Guttenberg

Todah Rabah to the BarMazel family for hosting Chaverim's end of the year party

**The Ballo Family**

*Donations continued on next page*



## GENEROUS CONTRIBUTIONS

*continued*

### MALK FUND

In memory of Jon Simkovitz  
Happy 90<sup>th</sup> birthday to Irving Herman  
Speedy recovery to Bill Friedman  
In memory of Patrice Maite's father  
In memory of Everett's father, Louis Abraham Shapiro  
In memory of Manny Nebel  
In honor of Megan Ferkel's graduation from law school  
*Phyllis Shapiro*

### NURSERY SCHOOL FUND

In honor of Ruth Axelbank's 90<sup>th</sup> birthday  
*Ellie & Barry Samuel*  
In honor of the exceptional teachers and magical year Rosie Jo Tomin experienced at Beth Ami Nursery School - THANK YOU!  
*Barbara Tomin and Anne Tomin & Reul Kaplan*

### PERMANENT ENDOWMENT FUND

In memory of my uncle, Larry Wallcave  
*Michael Lapp*

### RABBI'S DISCRETIONARY FUND

In memory of Lillian Graff  
*Max Graff*  
In memory of Jon Simkovitz  
*Sheyna Bakman*  
In memory of a loved sister, Molly Leavy  
In memory of a loved brother-in-law, Jules Goldman  
In memory of Norman Abramowitz and Irving Peretz, the both were loved dearly  
*Evey Abramowitz*  
In memory of Bessie Tsipan  
*Malvina Tsipan*  
In memory of Jon Simkovitz  
*Dorothy Marder*  
In honor of Rabbi Schlesinger's honorary doctorate degree for being in the rabbinate for over 25 years. Glad you finally made the trip to get your honor!  
*Melissa Bloom*

### RELIGIOUS SCHOOL FUND

In memory of Jon Simkovitz  
In memory of Everett Shapiro  
*Ross Jones & Jane Paul*  
In memory of Jon Simkovitz  
*Richard, Anne & Leah Kahn*  
A generous donation  
*Darrell Watkins*

### USY FUND

In memory of Jon Simkovitz  
In honor of Ethan & Aaron Sherman  
*Herb & Ellen Brosbe*

### ZITTIN FUND

In memory of Benny Friedman  
*Melissa Bloom*

## TEEN PROGRAM REUNION

*Rick Concoff*

There is an exciting event in the making, for anyone who participated in any of a number of Jewish teen programs in Sonoma County over the last 20 years. Were you involved in USY, NFTY, Kehillah, Tzadikim, Chaverim, Camp Chai counseling or any other Jewish teen program in Sonoma County? **If you were, hold the evening of December 18 for a memorable reunion to be held at Congregation Beth Ami. Rick Concoff** will be there as well as **Rabbis Gittleman, Schlesinger AND Jonathan Slater.**

The event will be a joyful one beginning with Havdalah and followed by sharing, shmoozing, reconnecting and of course, a dinner, prepared by the current Chaverim Advisory Committee and Chaverim teen members. A reasonable cost for the evening will be determined soon and proceeds will benefit the current Sonoma County JCC Teen Programs.

Please RSVP to [office@jccsoco.org](mailto:office@jccsoco.org) or 528-4222 with your address.



### JEWISH COMMUNITY CONTACTS



#### Hadassah/Trees for Israel

Rose Ann Premi, 537-9208

#### Hillel of Sonoma County

795-5464, [www.sonomahillel.org](http://www.sonomahillel.org)

#### Jewish Community Federation

Kirsten Miller, 568-6207, [www.sjfcf.org](http://www.sjfcf.org)

#### Jewish Community Free Clinic

Donna Waldman, 585-7780,  
[www.jewishfreeclinic.org](http://www.jewishfreeclinic.org)

#### Jewish Community Relations Council

Suzan Berns, 415/957-1551, [www.jcrc.org](http://www.jcrc.org)

#### Jewish Family & Children's Services

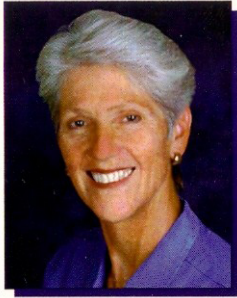
Diana Klein, 571-8131,  
[www.jfcs.org/sonoma-county](http://www.jfcs.org/sonoma-county)

#### Jewish Community Center, Sonoma County

Beth Goodman, 528-4222, [www.jccsoco.org](http://www.jccsoco.org)

(all area codes are 707 unless indicated otherwise)





**Carolyn Metz**  
**REALTOR®**  
 Business (707) 537-2369  
 Fax (707) 537-7427  
 Cell (707) 481-3390  
 cmetz@fhallen.com



460 Mission Blvd. • Santa Rosa, CA 95409

## Try Santa Rosa's Famous Challah!

Made in-house using the finest natural ingredients for a scrumptious Shabbat, French toast breakfast and beyond.



1181 Yulupa Avenue • Santa Rosa • CA 95405  
 Tel: 707 575-7915 • Open 8am – 9pm daily  
 wholefoodsmarket.com  
 Find us on Facebook: facebook.com/WFMSantaRosa



SINCE 1915

**15% donation to  
 Congregation Beth Ami  
 for each Personalized  
 Stationery or  
 Invitation order**

**637 Fourth Street  
 Santa Rosa, CA 95404  
 Tel. (707) 546-2424 • Fax. (707) 546-8750  
 invites@corricks.com**

**PARK AVENUE**  
 CATERING

*Experience what Kosher can be...*  
 NON-KOSHER AND KOSHER CUISINE

707 793 9645

SALES@PARKAVECATER.COM  
 WWW.PARKAVECATER.COM

*"...the best breakfast  
 & lunch joint around."*

Jeff Cox  
 Santa Rosa Magazine



**Dierk's Parkside Cafe**  
 404 Santa Rosa Avenue  
 Santa Rosa, CA 95404  
 707/573-5955

*Mark Dierkhising and Karen Brodsky, Owners*



**SCHY**

Leanne Schy  
 Graphic Design  
 & Copywriting  
 1145 Murray Ct.  
 Santa Rosa,  
 California 95404  
 707-528-4874  
 LSchy@Sonic.net



**ARTISTIC WEDDING  
 BAR & BAT MITZVAH  
 PHOTOGRAPHY**

Owen Kahn Photography

www.owenkahn.com  
 (707) 763-2219  
 (707) 527-6661

**RE+ Visioning**  
 Working with you  
 Bringing design clarity  
 To your home

- \* Design
- \* Organizing
- \* Space Planning

**Bonnie Boren**      707.528.1628

**Dedicated to the Client**

**Century 21 Alliance**

**Marlene Lowenthal, REALTOR®**  
 Direct 707 303-3348  
 Fax 707 303 3340  
 Cell 707 322 6561

Century 21 Alliance  
 1303 College Avenue  
 Santa Rosa, CA 95404




**NORTH BAY BEHAVIORAL HEALTH, INC.**  
**JOHN LEIPSIC, MD & ASSOCIATES**

**THE POWER OF INTEGRATED TREATMENT FOR KIDS, TEENS AND FAMILIES**

Psychiatric evaluation, medication management and psychological testing

Psychotherapy for children, adolescents and adults

Experienced and competent clinicians



Intake Information – 542-8979  
 1421 Guerneville Road, Suite 114  
 Santa Rosa, CA 95403  
[www.nbbhealth.com](http://www.nbbhealth.com)

**Ahuva Simon-Sa'ar**  
 Professional Jewish Grandmother

*Senior Companion  
 Serving Your Needs*



1545 Wright St. Santa Rosa (707) 545-2454



**BERNSTEIN  
 ORTHODONTICS**  
 ADVANCED ORTHODONTICS FOR CHILDREN AND ADULTS

**Rael Bernstein**  
 D.D.S., M.S., INC.

(707) 575-0600      (707) 836-8360  
 515 FARMERS LANE      8741 Brooks Rd. S. STE. 200  
 SANTA ROSA, CA 95405      WINDSOR, CA 95492  
[www.bernsteinbraces.com](http://www.bernsteinbraces.com)



**earth  
 in  
 upheaval  
 e. i. u., inc.**

for the service  
 and repair  
 of fine foreign automobiles

[earthinupheavalautorepair.com](http://earthinupheavalautorepair.com)

**an unusual name with unusual excellence**

**1970-2008**  
 Thirty Eight Years of Quality Service

especially qualified in

- Fuel Injection
- Driveability
- Electrical
- Diagnostic
- Emissions
- Air Conditioning
- Smog Pretest
- Chassis Dynamometer

specializing in

- Mercedes Benz
- BMW
- Volvo
- SAAB
- Japanese
- S.U.V.s

**198 S. HIGH STREET • SEBASTOPOL, CA 95472**  
 Open Monday-Saturday • rental cars available

**Richard Kahn**      (707)823-3777



**BETH AMI COMMUNITY NURSERY SCHOOL**

- ♦ Jewish traditions and holidays celebrated
- ♦ Excellent early childhood education
- ♦ Discovery-based individualized curriculum
- ♦ Twos, Threes and Fours programs, low ratio
- ♦ Afterschool enrichment classes
- ♦ Extended day care

**For more information, 707/360-3030**



## COMMUNITY EVENTS



### Jewish Community Center, Sonoma County Friendship Circle Membership Tea for seniors (55+)

Sunday, August 22, 2-4 pm

Coffee • Tea • Treats

Entertainment by Dave Marty, Banjo Player  
Extraordinaire

Free for Friendship Circle members, \$10 for  
non-members.

Call 528-1476 or [friendshipcircle@jccsoco.org](mailto:friendshipcircle@jccsoco.org)  
to RSVP or for more information.



## LA 2010 - The 20<sup>th</sup> World Conference of GLBT Jews

Happy Pride month! The 20<sup>th</sup> World Conference of GLBT  
Jews will take place August 13 - 15, at the UCLA Hillel.  
Everyone is welcome! Our conference features keynote  
speaker Elissa Barrett of the Progressive Jewish Alliance  
and World Congress Leadership Award recipient California  
State Senator Mark Leno, along with Shabbat services,  
numerous panels and speakers, and plenty of fun and  
camaraderie. A historic tour of gay and lesbian Jewish Los  
Angeles follows the conference. Please visit our website  
at [la2010.org](http://la2010.org) for registration and all conference details.  
Questions? Please e-mail [la2010@glbtjews.org](mailto:la2010@glbtjews.org). See you  
in August!

## Wine Country Kosher

...still trendy after 3000 years



MODERN • GOURMET • KOSHER

- Flavors of the Wine Country
- International Jewish Cuisine

Andrea Nett  
707/206-8686

CATERING

We specialize in B'nei Mitzvah  
[winecountrykosher@sbcglobal.net](mailto:winecountrykosher@sbcglobal.net)

## Music for Your Special Occasions

Zim  
Zum



Contact  
Rose or Jon Batzdorff  
[jon@sierraortho.com](mailto:jon@sierraortho.com)

אזמז  
(707) 539-7051

## EVENT RSVP FORM

### BBQ & BARCHU

☐ August 6, 6 pm

Beth Ami Member Adults \_\_\_\_\_ @\$14= \_\_\_\_\_

Non-member Adults \_\_\_\_\_ @\$18= \_\_\_\_\_

Youth: (ages 5-12) \_\_\_\_\_ @\$7= \_\_\_\_\_

**CHILDREN AGES 1-4 ARE FREE!**



### REGISTRATION AND PAYMENT

☐ I/We would like to make a contribution to the  
following event: \_\_\_\_\_  
for someone who would otherwise be unable to  
attend in the amount of \$ \_\_\_\_\_

☐ I will pay by credit card

☐ I will pay by check

Total enclosed or to charge: \$ \_\_\_\_\_

Names of all attendees: \_\_\_\_\_

Phone: \_\_\_\_\_

### CREDIT CARD INFORMATION:

Circle one: Visa MasterCard

Acct # \_\_\_\_\_

Expiration date: \_\_\_\_ / \_\_\_\_

Security Code: \_\_\_\_\_ Zipcode: \_\_\_\_\_

Mail, fax or bring this form with payment to:

Congregation Beth Ami  
4676 Mayette Avenue • Santa Rosa, CA 95405  
Phone: 360-3000  
Fax: 360-3003



# Congregation Beth Ami

4676 MAYETTE AVENUE, SANTA ROSA, CA 95405

Non-Profit Org.  
U.S. Postage  
PAID  
Permit No. 185  
Santa Rosa, CA

ADDRESS SERVICE REQUESTED

## AUGUST SCHEDULE OF SERVICES

### Friday Evening, August 6

(Candle Lighting: 7:58 pm)

6:00 pm Family Shabbat Dinner: BBQ & Barchu

7:30 pm Shabbat Evening Services.

### Saturday, August 7 • 27 Av

9:30 am Torah Study

10:00 am Shabbat Re'eh Services

*Luncheon hosted by Marilyn Stockfleth in honor of her birthday*

(Havdalah: 8:57 pm)

### Friday Evening, August 13

(Candle Lighting: 7:50 pm)

7:30 pm Shabbat Evening Services

### Saturday, August 14 • 4 Elul

9:30 am Torah Study

10:00 am Shabbat Shoftim Services

Potluck lunch following services

(Havdalah: 8:48 pm)

### Friday Evening, August 20

(Candle Lighting: 7:41 pm)

7:30 pm Friday Evening Services

### Saturday, August 21 • 11 Elul

9:30 Torah Study

10:00 am Shabbat Ki Tetze Services

Potluck lunch following services

(Havdalah: 8:39 pm)

### Friday Evening, August 27

(Candle Lighting: 7:31 pm)

7:30 pm Shabbat Evening Services

### Saturday, August 28 • 18 Elul

9:30 Torah Study

10:00 am Shabbat Ki Tavo Services

Potluck lunch following services

(Havdalah: 8:29 pm)