



CONGREGATION
Beth Ami

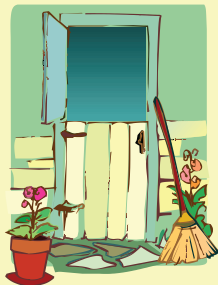
Shofar

4676 MAYETTE AVENUE, SANTA ROSA, CALIFORNIA 95405

707-360-3000

SEPTEMBER 2009

ELUL 5769 / TISHREI 5770



Shalom,

We cordially invite you to an end-of-summer-pre-High Holiday open house at our home on Sunday, September 6 from 2 to 5 p.m. This is an opportunity to bid farewell to the summer and to greet each other and the fall just two weeks before Rosh Hashanah. If you're not sure of our home address, you can check your CBA membership directory or call us at 538-8580. We will provide snacks and drinks. . .you bring the kids and the fun!

~Rabbi & Paula Schlesinger

Our special guests for the High Holy Days.

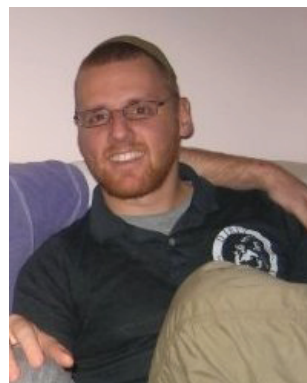


Natan Meir was born in Jerusalem and grew up in New Jersey, Israel and Canada. He is the son and grandson of Conservative rabbis and benefited from a Jewish day school education and a childhood in a number of synagogue environments, including Conservative, Reconstructionist, and havurah.

Natan is the Lorry I. Lokey Assistant Professor in Judaic Studies at Portland State University, where he teaches courses on modern Jewish history, Judaism, and the Holocaust. His book, *Kiev, Jewish Metropolis: A History, 1859-1914*, will be published next year by Indiana University Press.

He enjoys leading services and chanting Torah at Congregation Neveh

Shalom in Portland, where he and his partner Chanan are members. He also teaches adult education classes in Judaism and Jewish history throughout the Portland area. Over the past years he has led High Holiday and Shabbat services at various synagogues in the U.S., England, and Holland.



.....

Ben David, currently living in Santa Rosa and working at the Sonoma Hillel as their Director of Outreach and Programming, is leading Youth Services at Beth Ami.

Ben grew up in Portland, Oregon, and was an active member of Congregation Neveh Shalom, teaching in their religious school and leading their USY chapter. He attended the University of Oregon where he was involved in many Jewish extracurriculars, serving as the Hillel Student Board President, and as part of the AEPi chapter's Executive board, among others. During the summer Ben worked at Camp Solomon Schechter, as Song Leader and as head of Tefillah. Ben is working on an interactive, fun, and entertaining service for the High Holidays as well as coming on board as our new Religious School Director. He is excited to be a part of the Beth Ami community!

In this issue...

Rabbi's Remarks	page 3
Announcements & Events	page 4-5
President's Page	page 6
Nursery School News	page 6
September Calendar	page 7
High Holy Schedule	page 8
Mitzvah Moments	page 9
Literary Lines	page 9
Memo from Jerusalem	page 10
Stories of Our Matriarchs	page 12
Generous Contributions	page 13
Yahrzeits	page 14
Anniversaries & Birthdays	page 14
Jewish Community Events	page 15
Advertisements	pages 16-19
Event RSVP Form	page 19
September Services	back page

Congregation Beth Ami

4676 Mayette Avenue

Santa Rosa, CA 95405

Telephone: (707) 360-3000

Fax: (707) 360-3003

Email: office@BethAmiSR.org

Website: www.BethAmiSR.org

Hours of Operation

Beth Ami Main Office

Monday-Friday 10 a.m. - 4 p.m.

Library

Tuesday afternoons and Sunday mornings when Religious School is in session. Contact Ruth Rosenberg, 707/544-2919 for an appointment.

Gift Shop

Contact the office, 360-3000, to make an appointment.

Officers and Board of Directors 2009-2010

President, Patty Bernstein, basberyl@sonic.net
VP Administration, Al Batzdorff, abatz@sonic.net
VP Facilities, David Ballo, klezhead@yahoo.com
VP, Fundraising, Danella Lubar, dnlubar@yahoo.com
VP Youth and Education, Bonnie Boren, bonniegboren@gmail.com
Treasurer, Henry Cohn, henry.cohn@rocketmail.com
Secretary, Barbara McGee, barbara.mcgee@ffic.com
Library Committee, Susanne Batzdorff, sbatz@sonic.net
Membership Committee Liaison, Richard Kahn, earthin@sonic.net
Nursery School Liaison, Birgit Sacher, teamsacher@sbcglobal.net
Religious Practices Committee, Betty Boyd, bettyboyd@informingscience.org
Sisterhood, Robin Rose, robandroy@earthlink.net
Mark Rosen, (860) 202-8953
Heath Winer, heath@humanloom.com
Past President, Andy Fleming, andyflem@gmail.com
Rabbi George Schlesinger,
Member Ex Officio, rabbi@bethamirsr.org
Melissa Bloom,
Member Ex Officio, execdirec@bethamirsr.org

Personnel

Rabbi George Schlesinger	360-3004
rabbi@bethamirsr.org	
Melissa Bloom, Executive Director	360-3011
execdirec@bethamirsr.org	
Bookkeeper	360-3012
bookkeeper@bethamirsr.org	
Caroline Calvert & Robyn Fisher-Tachouet	
Nursery School Co-Directors	360-3030
nsdirector@bethamirsr.org	
Nursery School Office, ns@bethamirsr.org	
Rick Concoff, Chaverim Director	823-3916
concoff@yahoo.com	
Karen Gould, Newsletter	360-3000
newsletter@bethamirsr.org	
Ben David, Religious School Director	360-3000
Jennifer Hayes, Religious School Assistant	
rs@bethamirsr.org	
Elizabeth Jarlsberg, Administrative Support	360-3000
office@bethamirsr.org	
Gabor Por, Librarian	849-7682
library@bethamirsr.org	
Susy Raful & Helen Margolese, Gift Shop	360-3022
Sarah Stein, USY Advisor, scusy@bethamirsr.org	
Ruth Turner, Friedman Center Director	360-3021
ruth@friedmaneventcenter.com	

Call the office at 360-3000 to leave a message for:

- ▶ Leanne Schy, Torah/Haftarah Readings
- ▶ Andrea Nett, Catering Director
- ▶ Edythe Smith, Invitations, 538-3698

Congregation Beth Ami Mission Statement

Through celebration, learning, prayer and community, we seek to enrich our lives, transform our hearts, help heal the world and sustain our Jewish heritage.

Congregation Beth Ami Vision

A vibrant, growing campus for Jewish living where the joys of Jewish values and rituals are made accessible and relevant to the everyday lives of our members.
A flourishing, prospering congregation enjoying the wholehearted support, commitment and involvement of all our members.

Deadline for October issue: September 15

All editorial submissions must be received in the *Shofar* box in the Beth Ami office or via email on or before the deadline. **All submissions are subject to editing for clarity, brevity and content.** Please submit articles as Microsoft Word documents via email attachments. Contact Karen Gould, Editor, at 360-3000 or at newsletter@bethamirsr.org with corrections, concerns or questions.

The *Shofar* is a periodical issued monthly except for a combined June & July issue. It is published by Congregation Beth Ami, 4676 Mayette Avenue, Santa Rosa, CA 95405. All members in good standing receive the periodical free. Yearly subscriptions are \$25.00.

This month's issue is: Volume 15, Issue 1
Issue Date: September 1, 2009



RABBI'S REMARKS

Rabbi George Schlesinger

Most of us associate the holidays of Rosh Hashanah and Yom Kippur with attending the synagogue and the rituals that we experience in the presence of the congregation. We sit amongst the hundreds of other Jews who feel the pull to join with the community, and we try to find a sense of spirituality within the words we don't quite understand and a ritual that may seem foreign or antiquated. For many, it's so very hard to find meaning in the rituals that are removed from our usual experience and which do not speak to a sense of the Divine. I often hear from congregants who say they find a greater spirituality on Rosh Hashanah when they sit in the redwoods communing with God or even when they walk across the Golden Gate Bridge. In many ways, I sympathize with their dilemma. When I stand on the Bimah and conduct services, I more often feel like the "Grand Choreographer" of the Jewish Marathon than a person seeking (let alone finding) any sense of spirituality. I fully understand the quest for meaning on the holidays. I want to talk, however, about what I see as the benefits of gathering as a community even if we don't understand all the words and even if we aren't particularly familiar with the flow of the services and the ritual.

I believe there is something very powerful and even spiritual in gathering as a significant group. There is a feeling of "electricity" and a "power" that comes from being together. For me it comes on the very first night of Rosh Hashanah. Even though the congregation is not full because so many are sharing a New Year's feast at home with family and friends, there are far more people than attend services on Shabbat. There is a feeling of great expectation and hope. There is the sense that we stand on the threshold of great possibilities...both personal and communal. And when I approach the lectern and open my Machzor, I find the hopes and aspirations of 120 generations of Jews spread across the pages. Sarah learned of the promise for a son and she suddenly had hope in the future. Abraham walked up Mt. Moriah expecting to sacrifice Isaac and it seemed as if all hope was lost. Hannah prayed in silent meditation when her life seemed meaningless and she found solace in the presence of God. One by one, the piyyutim (the liturgical poems) come to life...especially when one knows their history. One was written by a Jew tortured and beaten by the Inquisition; another was written by a Jew facing death in the Rhineland. But not all were written in moments of torment or tragedy. Others were written in moments of great exultation and joy. Jews who wished to praise God for the goodness in their lives and their thanks for the great bounty they believe God had bestowed.

I find all this in the Machzor, and when I ask the congregation to read responsively, there is a welling up of sound as a great

I look forward to seeing all of you on the High Holy Days and hope that you'll share the experience with me, with Cantor Meir and the rest of the Beth Ami family. Shanah Tovah.

congregation responds. It almost feels as if a wall of sound is coming back at me and I feel like the Jews have responded to the ancient call. The power of the group is unmistakable.

As I sit to write this, much attention is being devoted to the 40th Anniversary of Woodstock. Once again books are being written, movies are being produced, news reports are circulating, and retrospectives of the '60s are filling the airwaves...all in an attempt to celebrate, recreate, and understand those events of mid-August 1969. There are those who talk about the music; some reflect upon the drugs and hippie counter-culture. Others mention the rain and the lack of sanitary facilities. One or two even mention how most of the attendees were just ordinary kids of the '60s who were interested in hearing the greatest music of their generation.

But most of those writing and reminiscing talk about the collective experience of 500,000 people gathering in one place, at one time to share in something special. And often when talking to others who were not there (myself included) what they seem to miss most was the sense of being with so many others sharing in the event.

The same feelings ran through a number of my congregants in New Jersey when they went to hear Paul Simon in Central Park the last time he played a free concert there. Again a half-million people gathered on the Great Lawn in Central Park. Screens the size of 18-wheeler trucks were erected so that everyone could see. The sense of community was overwhelming as everyone was sharing a similar experience at the same time.

Our High Holy Day services don't attract hundreds of thousands or tens of thousands or even thousands of people... just a few hundred. Yet, I believe there is a great power that we experience knowing that around the globe MILLIONS of Jews are doing exactly what we are. Whether it's only to hear the Shofar or whether it's to revel in every minute of the service, Jews around the world will gather on Saturday (Shabbat) September 19 to welcome the new year of 5770. And each one who attends comes for a particular reason. Maybe you attend because of tradition; maybe you're there because other members of the family expect it of you. Perhaps you're moved by the experience and you find great meaning in the themes and values of the holiday. Others I suspect, attend yet are unsure of just why. It's highly possible that many of you who attend don't truly connect with the prayers and the ritual. Conceivably, it's because you don't understand Hebrew; perhaps it's because the service seems "empty." Yet still you're here with the rest of the Jewish community sharing in the experience, seeing friends and acquaintances, renewing a connection with the synagogue and our heritage, celebrating the way Jews have celebrated for thousands of years. What enormous power there is in that!



EVENTS & ANNOUNCEMENTS

Mazal tov

Mason Alexander Gold was born August 11, 2009 to proud parents, Lisa and David Gold in Orlando Florida. He weighed 5 lbs. 10 ounces and was 18 inches long. Proud grandparents include Mienieke and Arnold Drake

Misheberach

Bless those in need of healing with refu'ah sh'layma

The renewal of body, the renewal of spirit

Joelle Burnette, Leo Gurevitch, Everett Shapiro,

Janet Stein-Larson.

Clergy visits

To ensure that Rabbi Schlesinger visits congregants in the hospital, extended care facilities and hospices, please contact the office at Beth Ami, 360-3000 when you or a family member is in need of a visit. In an effort to comply with the patient privacy laws, health-care facilities no longer release the names of their patients.

Beth Ami offers sincere condolences to:

- Dorothy Gerstein and her family on the death of her husband, Abe Gerstein.
- Alan Krubiner, Jane Meyer and their family on the death of Alan's father, David Krubiner.
- The family of Joyce Zenick on her death.
- Melissa Bloom, on the death of her uncle, Guy Cogan.



The Annual Book Discussion Series

We had a planning meeting on August 13 for our 27th year. We have selected a varied and stimulating array of books for you bookworms to read from November 2009 to July 2010. We will announce the titles in Cybershul very soon and also in the October *Shofar*. Personal e-mails or letters will go out to our former members. Enjoy the rest of the summer.

~Susanne Batzdorff, Book Discussion Coordinator



Ongoing programs at Beth Ami

♦ **Israeli Folk Dancing**, Tuesdays, 7:30 p.m., Friedman Center. For more info contact Leanne Schy at 528-4874 or Leanne@sonic.net.

♦ **BIBLE STUDY WITH RABBI SCHLESINGER**, 2nd & 4th Tuesdays, 10 a.m.

♦ **Torah & Talmud Study with Rabbi Schlesinger**, Thursdays, 7 p.m. Friedman Center Board Room.

Directory update

Dave Rubin
Brighton Gardens
300 Fountaingrove Parkway, Apt 302
Santa Rosa, CA 95403



Film Club at the Library

The movies are free!

September 2 - *Arranged*

(2007, USA) Over the course of the year an Orthodox Jewish woman and a Muslim woman – who meet as first-year teachers at a public school in Brooklyn – learn they share much in common – not least of which is that they are both going through the process of arranged marriages.

September 9 - *Would I Lie to You!* (1997, France – in French with English subtitles) The sentimental and comedic adventures of Eddie, a non-Jew trying to pass as Jewish though totally ignorant of Jewish traditions, as he works in a Jewish community.

September 16 - *Praying with Lior* (2007, UK) The last movie of the series, shortly before Rosh Hashanah, follows the life of Lior, a boy with Down syndrome, as he prepares for his Bar Mitzvah. This portrait will put us in the humble and spiritual mood for the High Holy Days.

Funds available for Jewish education

The Children's Jewish Education Endowment Fund (CJEEF) has funds available to distribute as stipends to provide students and faculty with Jewish educational opportunities.

Requests for financial assistance during the 2009-2010 congregational school year can be submitted to the synagogue office until Erev Rosh Hashanah (September 17, 2009).

Please include:

- ♦ Information about the desired program
- ♦ Its cost
- ♦ The benefit of attending
- ♦ The amount requested (\$300-\$500)

You can submit a one-page letter with the above information or call the office and request a Dedicated Fund Request Form.

Recipients will be notified by Erev Hoshana Rabbah (October 08, 2009).

Please consider furthering your child's Jewish education, or your own, if a Jewish educator.

~Mark Rosen, CJEEF Coordinator

A Note of Thanks

A heartfelt thank you to all my good friends for all of the good wishes and contributions on my 97th birthday.

~Sylvia Sucher

Todah rabah to Sara McGee, Sam Schoenfeld and Jordanna Tonelli for helping with the reconstruction of the Gaga Pit. And thanks to Bill and the staff at the Friedman's Home Improvement in Santa Rosa store.

~Barb McGee

Thank you all very much for your condolences on the passing of our beloved sister and sister-in-law, Ruby Medina.

~Carol & Mark Rosen

Recognition is reward enough. The affection evidenced by our Beth Ami family in support of the honor scheduled by our Jerusalem family is truly appreciated. All of you will be in our thoughts during the September 6 Honors Luncheon at Beit Knesset Moreshet Yisrael. A simple thanks!

~Susy and Bob Raful



EScrip REPORT: THANKS TO all of our SUPPORTERS

For the first six months of 2009, 237 CBA eScrip supporters have collectively contributed \$787.40. Thank you to all who support this program. We continue to have our goal of adding new supporters. Ask your friends and relatives to sign up; anyone can support Beth Ami. If you are reading this and are not yet on eScrip, start the new year by joining us!

Here's how to sign up: go to www.eScrip.com and designate Congregation Beth Ami in Santa Rosa, ID#136921119 to receive contributions. To sign up offline, there is a form in the office as well as on our website. Just fill it out and return it to the office and we will sign you up.

If you need help to sign up or have any eScrip questions, contact Nancy Sherman at 538-9388 or enshermn@pacbell.net.

L'Shana Tovah



Warm coat, hat, sweater and blanket drive

Beth Ami and Shomrei Torah are teaming up to help keep our friends in the community warm this winter. **During the month of September**, we'll be collecting gently used warm coats, hats, sweaters, blankets and sleeping bags to distribute to patrons of Elisha's Pantry (a food distribution site).

Clean out your closets and drop off any items in the collection bins at either Beth Ami or Shomrei Torah during September. All coat sizes will be accepted, but YOUTH sizes, particularly YOUNG TEENS are especially appreciated. Extra large sizes and rain gear make great donations as well!

Anyone interested in volunteering to help distribute items at the Pantry (located on Yulupa Avenue) on Thursday afternoons, 3:00 – 5:30 p.m. during November through early December should contact Beth Ami Coordinator Nancy Sherman at enshermn@pacbell.net or 538-9388.



PRESIDENT'S PAGE

Patty Bernstein, President

The time is now

Celebrating my mother-in-law, Helene Bernstein's 90th birthday has been a wonderful experience with friends and relatives from as far away as Italy, Oregon, California, Massachusetts, and Florida all coming together to honor the Matriarch of our family. My *own* mother, z"l, taught me to enjoy travel/parties/holidays on many levels. She used to say that planning and preparation was half the fun. Absolutely! In anticipation of this trip, I bought clothes, planned a gift, wrote a song, studied my Torah portion for her birthday Shabbat, and made lists and more lists—to try to anticipate (view in my mind's eye, if you will) what this trip to Virginia Beach was going to look like.

Personally, I was lobbying for an extra month between July and August or between August and September so that I might fit everything in that I want to/need to. But the party planning paid off and everything fell into place, not just because of *my* planning but because *everyone* had the singular purpose to make this birthday the most special one so far. And we all took in the wonder of the moments, real time, because that was really the purpose of all the pre-party lists.

Winding down from the birthday now, and looking forward to packing to depart VA Beach in the early morning, returning to Santa Rosa, work, Beth Ami, board business, I find the comparisons striking—especially with the High Holy Days coming in just a few weeks. (Wasn't it just Pesach?)

In preparing for the High Holy Days, I want to be cognizant of the overarching purpose of these preparations and I encourage you to do the same. Besides planning meals and table arrangements, in addition to getting my white clothes out and checking which ones still fit, I'm trying to focus on the spiritual, the now: **teshuvah, tzedakah, and tefillah**. I'm going to try to be present in each moment. When I've been able to do that in the past, I've found the experience so much more rewarding. Planning is great—and I'd never deny that it is key to a successful event. But the Holy Days are so much more than an event, they are our chance to become better people, to make amends, to undo wrongs, to start on a healthier path. Seize the opportunity. The time is now ... see how "awesome" these days can be. See you at services!



*L'shanah tova tikatev
v'taihatem: May you be
inscribed and sealed for a
good year.*

NURSERY SCHOOL NEWS

Caroline Calvert & Robyn Fisher-Tachouet
Nursery School Co-Directors

Greetings from the Nursery School!

We are excited to start the school year with full enrollment, the entire teaching staff returning and Caroline and Robyn continuing to share the position of Co-Directors. We are already beginning the work necessary to have a successful fundraiser thanks to the support of our newly appointed parent committee chairs, **Jessica Sutton & Jillian Navarro**. (Don't forget to save the date: Saturday, November 14). We hope to see you there!

We are pleased to announce that we are the recent recipients of a scholarship grant of over \$4,000 from the Jim Joseph Foundation. This money will go towards tuition for many of our families who might not otherwise be able to attend.

We are looking forward to being able to enjoy our beautiful play yard once again. The children have been able to reap the benefits of their hard work and were rewarded with a variety of fruits and vegetables from the garden this summer. We have received many compliments from congregation members regarding all of the improvements on our playground. Thank you for noticing...

Remember that our door is always open for you. Don't hesitate to contact us.



This scholarship is provided by the Jim Joseph Foundation in partnership with your local Jewish Federations and Bureau of Jewish Education.



From our Diller teen

On August 6, 2009 I returned from the Diller Teen Fellows adventure to the land of Israel for three weeks. We had the opportunity to stay in the holy city of Jerusalem for four nights and then travel to Etzba Hagalil, the Northern Galilee for the next week to spend time servicing the community and sight seeing. The week after that we traveled to a hostel on the Mediterranean Sea where the 2009 Diller Teen Congress met and created a vision for the Jewish community in 2020. The workshop's goals at the Congress were to create an image of an ideal leader for the Jewish community in 2020 and to establish goals for how the Diller Teens can help the world to become a better place for Jews to live in, in the year 2020.

~Jacob Kreger

CONGREGATION BETH AMI • SEPTEMBER 2009 • CALENDAR OF EVENTS

Sunday	Monday	Tuesday	Wednesday	Thursday	Friday	Saturday
<div>30</div> <div>12:30pm - Chaverim Kick Off</div>	<div>31</div> <div>Office Open 10am-4 pm</div>	<div>1</div> <div>Office Open 10am-6pm 10:30am - Conv. Hebrew - 7pm - Executive Committee 7:30pm - Israeli Dancing @</div>	<div>2</div> <div>Office Open 10am-4 pm 7:30pm - Library Film Club @</div>	<div>3</div> <div>Office Open 10am - 4pm 10:30am - Conv. Hebrew -</div>	<div>4</div> <div>Office Open 10am-4 pm 6pm - Shabbat Dinner 7:19pm - Candle lighting @ 7:30pm - Erev Shabbat 8:30pm - Oneg</div>	<div>5</div> <div>9:30am - Shabbat Services 12pm - Potluck Luncheon 8:47pm - Havdalah (72 min)</div>
<div>6</div>	<div>7</div> <div>Office Closed</div>	<div>8</div> <div>Office Open 10am-6pm 10:30am - Conv. Hebrew - 7:30pm - NO Israeli Dancing</div>	<div>9</div> <div>Office Open 10am-4 pm 5:30pm - Nursery School 7:30pm - Library Film Club @</div>	<div>10</div> <div>Office Open 10am - 4pm 10:30am - Conv. Hebrew -</div>	<div>11</div> <div>Office Open 10am-4 pm 4:30pm - Chaverim Camping 7:08pm - Candle lighting @ 7:30pm - Erev Shabbat 8:30pm - Oneg</div>	<div>12</div> <div>9:30am - Shabbat Services 12pm - Potluck Luncheon 8:37pm - Havdalah (72 min) 9pm - Selichot Services @</div>
<div>13</div>	<div>14</div> <div>Office Open 10am-4 pm 6:30pm - Chaverim - 8th</div>	<div>15</div> <div>Office Open 10am-6pm 10:30am - Conv. Hebrew - 7pm - Board Meeting 7:30pm - Israeli Dancing @</div>	<div>16</div> <div>Office Open 10am-4 pm 7:30pm - Library Film Club @</div>	<div>17</div> <div>Office Open 10am - 4pm 10:30am - Conv. Hebrew - 6:30pm - Chaverim - 9th</div>	<div>18</div> <div>Office Open 10am-3pm 6:57pm - Candle lighting @ 7:30pm - Erev Rosh 8:30pm - Oneg</div>	<div>19</div> <div>9am - Rosh Hashanah 10am - Children's Service & 8:25pm - Havdalah (72 min)</div>
<div>20</div> <div>9am - 2nd Day Rosh 5pm - Tashlich @ Howarth 8:24pm - Havdalah (72 min)</div>	<div>21</div> <div>Office Open 10am-4 pm 6:30pm - Chaverim - 10th</div>	<div>22</div> <div>Office Open 10am-6pm 10:30am - Conv. Hebrew - 7:30pm - NO Israeli Dancing</div>	<div>23</div> <div>Office Open 10am-4 pm</div>	<div>24</div> <div>Office Open 10am - 4pm 10:30am - Conv. Hebrew - 6:30pm - Chaverim - 11th &</div>	<div>25</div> <div>Office Open 10am-4 pm 6:46pm - Candle lighting @ 7:30pm - Erev Shabbat 8:30pm - Oneg</div>	<div>26</div> <div>9:30am - Shabbat Services 12pm - Potluck Luncheon 7pm - Chaverim - 8th Grade 8:14pm - Havdalah (72 min)</div>
<div>27</div> <div>6:30pm - Kol Nidre Services 6:43pm - Candle lighting @</div>	<div>28</div> <div>Office Closed 10am - Yom Kippur Services 8:11pm - Havdalah (72 min)</div>	<div>29</div> <div>Office Open 10am-6pm 10:30am - Conv. Hebrew - 7:30pm - Israeli Dancing @</div>	<div>30</div> <div>Office Open 10am-4 pm</div>	<div>1</div> <div>Office Open 10am - 4pm 10:30am - Conv. Hebrew -</div>	<div>2</div> <div>Office Open 10am-3pm 6pm - Shabbat Dinner 6:35pm - Candle lighting @ 7:30pm - Erev Sukkot 8:30pm - Oneg</div>	<div>3</div> <div>9:30am - Sukkot Services 12pm - Hosted Luncheon in 8:03pm - Havdalah (72 min)</div>



CONGREGATION BETH AMI

HIGH HOLY DAY SCHEDULE



Service	Day	Location	Time
---------	-----	----------	------

SELICHOT	Saturday, September 12	Sanctuary	9:00 p.m.
----------	------------------------	-----------	-----------

.....

ROSH HASHANAH

Erev Rosh Hashanah	Friday, September 18	Friedman Center	7:30 p.m.
--------------------	----------------------	-----------------	-----------

1st Day	Saturday, September 19	Friedman Center	9:00 a.m.
Children's Service		Sanctuary	10:00 a.m.
Tot Shabbat Service		Room 12-13	10:00 a.m.
2nd Day	Sunday, September 20	Sanctuary	9:00 a.m.
Tashlich		Howarth Park	5:00 p.m.
Shabbat Shuvah	Friday, September 25	Sanctuary	7:30 p.m.
Shabbat Shuvah	Saturday, September 26	Sanctuary	9:30 a.m.

.....

YOM KIPPUR



Kol Nidre	Sunday, September 27	Friedman Center	6:30 p.m.
Yom Kippur	Monday, September 28	Friedman Center	10:00 a.m.
Children's Service		Sanctuary	10:00 a.m.
Yizkor		Sanctuary	4:30 p.m.
Mincha		Sanctuary	5:00 p.m.
Teen T'Shuvah Service		Room 12-13	5:00 p.m.
Neila		Sanctuary	6:30 p.m.
Shofar (followed by Break-Fast)		Sanctuary	7:40 p.m.

.....

SUKKOT, SHEMINI ATZERET, SIMCHAT TORAH

Erev Sukkot	Friday, October 2	Sanctuary	7:30 pm
Sukkot 1st Day	Saturday, October 3	Sanctuary	9:30 am
Sukkot 2nd Day	Sunday, October 4	Sanctuary	9:30 am
Erev Shemini Atzeret	Friday, October 9	Sanctuary	7:30 pm
Shemini Atzeret	Saturday, October 10	Sanctuary	9:30 am
Erev Simchat Torah	Saturday, October 10	Sanctuary	7:30 pm





LITERARY LINES

Gabor Por



MITZVAH MOMENTS

Tish Levee

This fall brings some changes in the life of the library. What will not change is our commitment to keep the library open at least during the hours of Religious School on Tuesday afternoons and Sunday mornings. **Religious School starts on September 13 and so will our new hours.** At the time of writing this column (mid-August) we don't know exactly what additional hours we will be able to be open, but we intend to expand the hours as much as our volunteers' time allows.

The main reason for the decreased hours, compared to last years is the lack of funding. Because we have not received the grant we applied for and we have no additional revenue source to cover the salary for the part-time librarian, the library needs to revert to being a volunteer-run operation. As you may have read in last month's Shofar we are looking for more volunteers. So if you have the time and interest to serve the community by volunteering a few hours a week, please come on in and let us know.

The Beth Ami executive committee authorized the library to work on re-visioning the library's future. We are actively researching the possibilities and options and hopefully by next month we will have something to report and share. Meanwhile, we invite you to become a participant in this process so together we can create a more inclusive and supportive vision.

The summer film club will wind down in September with its last three movies: *Arranged* (September 2), *Would I Lie to You!* (September 9), and *Praying with Lior* (September 16). For details and trailers check our webpage: <http://bethamisr.org/library/filmclub/> or see page 4 of this newsletter.

We are also gearing up for **Simcha Sunday on October 25**. Just like last year we will be selling books. If you have unwanted books related to Judaica in your possession, this is a good time to get rid of them in a way that supports a good cause. Please bring them to the library during open hours or drop them at the office with a note.

Finally, I would like to point out that we have a great selection of books that you can utilize to prepare yourself for High Holy Days. These books range from introduction to the liturgy and holiday customs, through spiritual advice on how to make the season meaningful for you, to guides for text study. You can surely find something that will engage you, satisfy your needs and inspire you to learn more.

May you all be inscribed in the Book of Life for a good year. (And borrow a good book or two for a month or more.)



Winter's coming—help someone stay warm

See Nancy Sherman's article about the Warm Coat Drive elsewhere in the *Shofar*.

"...this is the fast I desire," (Isaiah 58:6)

When we fast on Yom Kippur, we not only don't eat or drink, we also donate food or money to help people whose whole lives seem to be one long fast. This year donate to alleviate world hunger through Mazon (<http://www.mazon.org/>) or the World Food Bank (<http://www.wfp.org/how-to-help>), as well as bringing food to shul for the Redwood Empire Food Bank's collection..

Help wildlife by washing dishes

Buy a Special Edition bottle of Dawn Dishwashing detergent, used to clean birds and animals after an oil spill, and register your purchase online. Dawn will donate \$1 for every one you buy to wildlife rescue efforts. So far \$41,000 has been donated.

Don't flush your old prescriptions down the toilet or put them in the trash! Increasingly our water sources are being contaminated with chemicals from drugs. The Safe Medicine Disposal Program now accepts liquids, ointments, lotions, and creams as well as pills and capsules, including over-the-counter medications. Bring them in the original containers (and take the pill bottles home to recycle) to more than ten sites in Santa Rosa alone. Already the program has kept nearly 5,000 pounds of unwanted medicines out of local waterways. Call 707/543-4368 or 707/833-2553 for drop-off locations and more information.

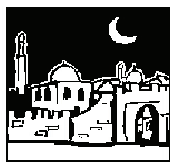
Save energy

Unplug home electronics and appliances with a remote control or a clock. Even turned off, they consume 40% of their total energy use.

Help others while saving water

Kohler will donate \$1 in plumbing products to Habitat for Humanity when you take a short water use quiz at <http://www.savewateramerica.com/home.swa#/home/>. So far nearly \$525,000 worth of products have been donated. The website also has a water use calculator and water saving tips. For more water saving tips, go to the EPA's website <http://www.epa.gov/watersense/>. The City of Santa Rosa has rebates for replacing lawns with low maintenance landscaping and for replacing older toilets (they use the most water indoors) with HET's—High Efficiency Toilets. The city also offers free water conservation surveys, do-it-yourself survey kits, conservation workshops, and free low-water plumbing hardware. Go to <http://ci.santa-rosa.ca.us/departments/utilities/conserve/Pages/rebates.aspx> or call 707/543-3985.

© Copyright Tish Levee, 2009. All rights reserved



MEMO FROM JERUSALEM

Bob Raful

Welcome home to Jerusalem

To our family, this memo gives you a highlight of our first week here. Love to all

We arrived in Jerusalem late Wednesday afternoon. By prior email contact, we had an invitation for Friday evening Shabbat dinner—is there a better way to return home?

Our hosts are Judy and Rabbi Benji Segal. Judy, the Development Director (fund-raiser) at the Israel Goldstein Youth Village for 25 years, has become a close family friend. For that we owe a debt to Ellen and Herb Brosbe, who many years ago hosted a “parlor meeting” for Judy’s visit to Santa Rosa. Several years later, we co-hosted Judy’s visit with the Greensweigs.

Rabbi Benji Segal is one of the best known educators in Israel. Since arriving in Israel about 35 years ago to direct the Camp Ramah in Israel programs, he has led several important educational organizations. He now concentrates on writing (many readers will remember his Santa Rosa visit, earlier this year, to talk about his new book on “The Song of Songs.”

The Segals live in the last house on their East Talpiot street. The property line shares a chicken-wire fence with a large Arab village. It has always been peaceful during our many visits. That has not always been the case, a fleeting thought as we gathered around a large table on the patio outside the front door.

One Segal mystery is how, with her heavy work schedule, Judy regularly produces a delectable “groaning table” for Shabbat meal. The introductory prayers included two full baskets of home-baked challot. Then, in succession we were tempted with 6 or 7 salads, a hearty vegetable-noodle soup; and platters of roast chicken, a potato mixture, baked polenta, veggies; all followed by several bowls of nuts and a platter of grapes and watermelon! This weekly festive meal began about 8:30 p.m. (upon return from Friday evening services) and we left the Segals at 11 p.m.

While the meal was impressive enough, I was struck with the fact that we were observing a virtual informal summit meeting of Jewish community leaders. Among the 11 diners at the table the host Rabbi Benji described his latest three-year project, an Internet posting of new approaches to understanding each of the 150 Psalms.

The other participants: The rabbi who manages the multiple programs at the Fuchsberg Jerusalem Center for Conservative Judaism; The Chief Executive of the New York-based Masorti Foundation, dedicated to raising funds and organizing support for the Masorti (Conservative) Movement in Israel. This is his fourth career, after serving successively as senior aide to a U.S. Senator, a U.S. Secretary of State, as an advisor to a U.S. President; and a major career in corporation law; a highly respected teacher of a new generation of rabbis. After many years as a professor in the Jerusalem Hebrew Union College Rabbinical School, he is just moving to the Schechter Institute as Dean of its Masorti Rabbinical School.

And, among these scholars, the awed wine-country bumpkins from Santa Rosa. Is there a better way to return home?

Matriarchs continued from page 12

She joined Congregation Beth Ami in 1982. She has been our librarian ever since she became a member. Susanne famously helped design and make the needlepoint covers for the Torah and the lecterns. She also made a small unorganized library into a thriving place of study.

Susanne and Alfred wanted to become more socially integrated in the Santa Rosa community, and she says that Beth Ami has given her all that and more. She says that one of her favorite impressions of America was attending Simcha Sunday, and seeing the thriving Jews there. Her first thought was, “Am Yisrael Chai! Hitler did not win!”

*Woman of Valor
More precious than rubies
Passing her knowledge from
generation to generation
~Proverbs 31*

Each issue of the Shofar features several biographies (space permitting) of the Matriarchs who were honored at the Rosh Chodesh Chai Tea held on November 23, 2008. The biographies, written by Rosh Chodesh members, USYer's and Religious School students, were originally printed in the event program. Paula Schlesinger wrote the introduction to each honoree.

**Congregation Beth Ami
Judaica Gift Shop
is a great place to shop for the
High Holy Days!**

Fall
September Hours:
Please call the office
to make an appointment.



**CBA is proud to announce
we have a NEW
Religious School Director!**

Ben David brings new programming and enthusiasm that we know will help our Religious School. Please help us in welcoming him to our Beth Ami community.

***We look forward to another
exciting and successful year of
Religious School at Beth Ami.***

*If you have any questions please feel free to contact us
at anytime, 360.3000 or rs@BethAmiSR.org*

Pre order your Challah Bags today!

**Challah bags contain apples,
honey and round challah.**

**All bags are lovingly constructed and
support Sonoma County USYers!**

**The order form is available at www.bethamisr.org
or call the office, 360-3000.**

PLEASE ORDER BY SEPTEMBER 11.



THE STORIES OF OUR MATRIARCHS



Susanne Batzdorff

During very adverse times in Hitler's Germany Susanne learned to overcome difficulties because she had to. Susanne's talents as prayer leader, librarian, and published poet are well known throughout the Beth Ami community.

We light a candle in honor of the multiple talents of Susanne Batzdorff.

Born in Breslau, Germany, on September 25, 1921, Susanne grew up in Germany in a large house owned by her grandmother. She lived with her parents and brother. Her uncle, aunt and their four children lived in the same house, as did her grandmother, two aunts and another cousin. She had a great family life until Hitler came to power, then her life changed dramatically. They put up pictures of Hitler in every classroom in her school and instead of saying hello she had to say "Heil Hitler." Anti-Semitism was an important part of Hitler's political agenda, and so their lives became increasingly difficult.

She has a younger brother who she is still very close to. She was 11 when she moved into a new house. This was a memorable time because Susanne met her future husband, Alfred, who lived in the same apartment building.

In 1938 her parents lost their medical licenses because of their Jewish status. On November 9 their synagogue was blown up by the Nazis. Windows of Jewish businesses were broken. The Nazis took all the Jewish men they could find to concentration camps. Alfred was arrested but was able to escape. Susanne's father had gone to America in the summer of 1938 and was able to send for his family several months later. They were finally able to move to America. Susanne was very happy when she reunited with her father.

She learned to overcome difficulties because she had to. Another difficulty was knowing that not all her friends and family would make it out of Germany alive. Last, but not least, the situation hampered her dream of becoming a writer. She was determined to learn English as quickly as possible, so she could write in her new language.

At her grandmother's house she and her brother learned a lot about Jewish customs and celebrations. They went to religious school for eight years. Although she could not become a Bat Mitzvah at that time, Judaism became very important to her.

continued on page 10

Shirley Rosaler

Shirley copes with difficulties by considering that there are different chapters in life that include both wonderful and sad experiences. Judaism is a part of her everyday experience.



We light a candle in honor of the balanced view of life taught by Shirley Rosaler.

Shirley was born on October 10, 1921 in Manhattan, living there until age six when her family moved to the Bronx. Her father was a fabric salesman for the ladies clothing industry. She had one sister who was eight years younger. Shirley attended conservative Temple Adath Israel where she went to Hebrew school and was confirmed. She went to an all girls high school and was active in a co-ed Jewish youth group at her Temple, where she initially met her husband-to-be, Bob. After graduation, Shirley attended NYU where she received her degree in Interior Decorating. She then went to work for a furniture manufacturing company in Manhattan. One day after work, Shirley bumped into Bob coming out of the subway. They hadn't seen each other for five years. Bob was in the Navy in Boston and was home on weekends. They started dating again and married in 1945. They moved in with Bob's dad and brother and Shirley learned to cook very quickly with her mother's help. As time went on, their family grew with the addition of their daughter Jean and son Kenneth. They moved to Ridgefield, New Jersey and later bought a house in Ardsley, New York where they lived for 35 years. They relocated to Santa Rosa in 1989 to be near Jean and her husband in San Francisco. They joined Beth Ami at that time and Shirley became very active in the community. She was President of the Sisterhood as well as Membership Chairman for the synagogue. She was also active in Hadassah.

Judaism is very important to Shirley in her everyday life and she enjoys Shabbat and holiday services and attending synagogue events. A memorable time for Shirley was when they first moved to Oakmont and she joined a Line Dancing class. She enjoyed this so much that she became part of a group called "the Happy Hoofers" which performed for many years at the Sonoma County Fair and for clubs and events.

Shirley copes with difficulties by considering that there are different chapters in life that include both wonderful and sad experiences. Shirley and Bob have three grandsons with whom they enjoy spending time.



Generous Contributions to our Congregation

The next time you are looking for a meaningful way to celebrate a joyous occasion, remember a loved one, or comfort a mourner, please consider a donation to Congregation Beth Ami. When you make a gift, a card is sent to the honoree or the family and your donation is proudly acknowledged in the Shofar. The minimum donation for each occasion is \$7.50. Congregation Beth Ami truly appreciates your support.

GENERAL FUND

In memory of my sister, Ronda Heard

Stanley Feingold

In memory of Carol Rosen's sister, Ruby Medina

Susy & Bob Raful

Judi Hyman

In honor of Caroline, Dylan, Amanda and Lauren Kolman's B'nai Mitzvah

Mark Rosen

Condolences to Mark and Carol Rosen on the death of Carol's sister, Ruby
Congratulations to Elsie Rich - Keep smiling, keep laughing, keep filling our hearts with joy

Juli Scherer

In memory of my mother, Beckie Trichter

Julie Trichter

In honor of our lay leaders who led services in July while Rabbi was away - Eli Cohen, Betty Boyd, Bonnie Boren, Phil Weil, Patty Bernstein, Suzanne & Alfred Batzdorff, Anne Mann, Arnold Drake, Tish Levee, Lillian Judd & Bruce Stolbov
In memory of Floyd Weiss

In memory of Carol Rosen's sister, Ruby Medina

In appreciation of the hard work of the members of the Religious Practices Committee - Alfred & Susanne Batzdorff, Leanne Schy, Patty Bernstein, Bill Cordell, Meineke & Arnold Drake, Bob Raful, Eli Cohen & Betty Boyd, Melissa Bloom, and Rabbi Schlesinger

In honor of Ceil & Sandy Berman becoming great grandparents of a little girl
In memory of Alan Krubiner's father, David Krubiner

Susan Miller

Mazal Tov to the Friedman family on the marriage of Shera

Edith Newman

In honor of Elsie Rich's 108th birthday

Bob & Susy Raful

Ann M. Tomczak

Helen Dresser

In memory of Abraham Schlesinger, Sarah Schlesinger, Sylvia S. Weinstein, Milton Weinstein

Julius & Emma Schlesinger

In memory of Abe Gerstein

In memory of my brother, Victor Monoson

Rosalie Schweit

In memory of Abe Gerstein

Edith Newman

A generous donation

Darrell Watkins

In memory of Abe Gerstein

In honor of Arnold & Meineke Drake's new grandson

Alfred & Susanne Batzdorff

In appreciation of Andrea Nett & Elizabeth Jarlsberg - for all you do for Beth Ami!

Melissa Bloom

In memory of my mother, Netka Taubner

Susy Raful

In memory of my sister, Lee Blau

Shari Kafton

In memory of Verne's parents, Amelie & Abraham Olchovy

In honor of Elsie Rich's 108th birthday

Verne & Raynore Paule

In memory of Alan Krubiner's father, David Krubiner

In memory of my mother, Florence Friedman

In honor of Dylan Wardwell's Bar Mitzvah

In honor of Marisa Jones' Bat Mitzvah

In memory of Ruby Medina, sister of Carol Rosen

In honor of Nancy Fleming's recovery

In honor of Elsie Rich's 108th birthday

Robin Rose

LIBRARY FUND

In memory of Julian Streitfeld

Ricki Streitfeld

MALK FUND

In honor of Elsie Rich's 108th birthday

In memory of Carol Rosen's sister, Ruby Medina

Ellen & Herb Brosbe

In memory of Abe Gerstein

Phyllis & Everett Shapiro

A generous donation

Michael Kupperberg

NURSERY SCHOOL FUND

A thoughtful donation

Evelyn Gurevitch

RABBI'S DISCRETIONARY FUND

In honor of Elsie's birthday - To one of the best

Evey Abramowitz

In memory of Fredrick William Marshal

Carolyn Metz

A generous donation

Ann & Ben Bacon

In memory of Lester Schweit

Rosalie Schweit

In memory of Emil Tsipan

Malvina Tsipan

In memory of Vladimir Zelichenok and Yechezkiel Rivkin

Rimma & Adolph Rivkin

In memory of Ruth's parents, Marion & Edwin Dudley

Ruth & Brian Wilson

RELIGIOUS SCHOOL FUND

A generous donation

Darrell Watkins

SIMCHA BOARD

Honor thy mother...also thy aunt, uncle, cousin, child, best friend, teacher with an engraved leaf on our Simcha Board commemorating any joyous occasion, bestowal of an honor, or cause for thanksgiving.



LEAF \$360

SMALL STONE \$1000

LARGE STONE \$2500



We also provide the opportunity for you to memorialize loved ones on our Yahrzeit Board.

A PLAQUE IS \$450.



September Yahrzeits

Secular dates correspond to Hebrew date of death.

Observance of yahrzeit begins at sundown the previous day. All yahrzeits observed at Beth Ami

Announced on September 4th and 5th

Sept. 5	Audrey Schoen	Sister of Phyllis Shapiro
Sept. 5	Lester Schweit	Husband of Roslie Schweit
Sept. 6	Robert Karr	Brother of Noorilah Karr
Sept. 6	Angela Ruth Kupperberg	Wife of Michael Kupperberg
Sept. 7	Dan Ben Hershel	Nephew of Evelyn Gurevitch
Sept. 7	Caroline Berman	Mother of Sanford Berman
Sept. 8	Barbara Wallace	Sister of Arnold Drake
Sept. 9	Joshua Maurice Cohen	Father of Leonard Cohen
Sept. 9	Morris Marks	Grandfather of Myrna Morse
Sept. 9	Ida Mann	Grandmother of Judith Helman
Sept. 10	Arther Root	Father of David Root

Announced on September 11th and 12th

Sept. 12	Emil Javor Judd	Husband of Lillian Judd
Sept. 12	Shirley Kafton	Mother of Alan Kafton
Sept. 12	Sylvia Golemb	Mother of Sherrill Golemb
Sept. 13	Fritzi Jacob	Sister of Elsie Rich
Sept. 13	Naftali Hertz Morse	Father-in-Law of Myrna Morse
Sept. 14	Abraham Rubinstein	Husband of Miriam Rubinstein
Sept. 15	Irving Nathan	Father of Asher Nathan
Sept. 17	Gerald Wilson	Father of Brian Wilson
Sept. 18	Yechezkiel Rivkin	Father of Adolph Rivkin

Announced on September 18th and 19th

Sept. 19	Max Lachman	Father of Vivian Salmon
Sept. 19	Arthur Levine	Former Husband of Gussie Hankin
Sept. 19	Rose Zittin	Grandmother of Charlene Bornstein and Bill Friedman
Sept. 20	Myer Brust	Grandfather of Barbara McGee
Sept. 20	William Colton	Brother of Evelyn Gurevitch
Sept. 21	Jennie Klein	Mother of Ricki Streitfeld
Sept. 21	Priscilla Landesman	Mother of Marlene Lowenthal
Sept. 22	Dorothy Lowenthal	Mother of Ira Lowenthal
Sept. 22	Shava-ba-Shav Bat Baruch Penkovich	Mother of Sarah Tyutinman
Sept. 22	Jenny Wiesenthal	Mother of Natalie Friedman
Sept. 23	Donald Morrison	Father of Dr. Elliott Morrison
Sept. 23	Helene Senzer	Mother of Adrea Moss
Sept. 24	Susan Dove	Niece of Betty Franks
Sept. 24	Morton Stolbov	Father of Bruce Stolbov
Sept. 25	Frances Brust	Grandmother of Barbara McGee
Sept. 25	Carolina Gordon	Granddaughter of Marjorie Gordon
Sept. 25	Raymund Mundell	Father of Michael Mundell
Sept. 25	Harald Quam	Father of Lindsay Kvam

Announced on September 25th and 26th

Sept. 26	Hilda Meyer	Mother of Jane Meyer
Sept. 27	Joseph Diamond	Father-in-Law of Marilyn Diamond
Sept. 27	Shulamit Sapojnikov	Mother of Ahuva Simon-Sa'ar
Sept. 27	Etta Steier	Mother of Alan Steier
Sept. 28	Sol Goldstein	Father of Rosalind Herritt
Sept. 28	Tuba Goldstein	Mother of Rosalind Herritt
Sept. 28	Sol Hurwitz	Father-in-Law of Rosalind Herritt
Sept. 28	Rose Levi	Mother-in-Law of Rosalind Herritt
Sept. 30	Carl Connors	Father of Tish Levee
Sept. 30	Ester Pekker	Mother of Semyon Pekker
Sept. 30	Harold Ross	Father of Stuart Ross
Sept. 30	Ben Wolf	Father of Marilyn Wolf
Oct. 1	Joaquin Boadella	Brother of Lillian Shelan
Oct. 2	Hans Schiffman	Brother of Elsie Rich

Kvell (rejoice) with us!

September Anniversaries

1	Gregory & Birgit Sacher
3	Larry & Kim Solomon
4	Boyd & Martha Lane
7	Daryl & Joan Schloss
8	Bob & Shirley Rosaler
13	Dylan & Jodi Cohen
14	Adolph & Rimma Rivkin
14	Jane Rogan & Phil Dwight
15	Ross Jones & Jane Paul
16	Richard & Caroline Lazovick
21	Phil & Carol Zeidman
25	Russ & Terry Gurevitch
29	Ira & Ruth Rosenberg

September Birthdays

3	Barbara Corinblit
5	Sheri Haiman
5	Phil Weil
6	Bonnie Boren
6	Shari Kafton
8	Jacqueline Katzel
8	Richard Krigstein
8	Dorothy Marder
8	Leanne Schy
11	Jane Meyer
12	Therese Becraft
13	Barbara Boren
13	Brian Gross
13	Adrea Moss
15	Michelle Azulay
15	Robert Rosaler
16	Ethel Schy
18	Elaine Golemb
18	Dr. Gary Herzberg
18	Leslie Lowell
18	Carol Newman
18	Sherri Weinstein
20	Randy Weinstein
22	Ahuva Simon-Sa'ar
24	Helen Margolese
25	Susanne Batzdorff
26	Leonard Cohen
28	Arlene Rosenbaum
28	Julius Trichter
30	Joyce Kobetz
30	Gerald Lakins





Jewish Community Events

Jewish Community Center, Sonoma County

◆ **The 14th annual Sonoma County Jewish Film Festival**, presented by the Jewish Community Center, Sonoma County, September 30 through December 3.
For information on tickets, locations and times, contact Ellen Blustein, 526-5538, or www.jccsoco.org.



◆ **Friendship Circle Luncheons**
Rediscovering Tutankhamun:
Amateurs, Looters and Archaeologists
Monday, September 14 at noon

Taking the Mystery out of Hospice with Nina Arbour
Monday, October 5 at noon

Luncheon Details: \$10 Friendship Circle members; \$12 for non-members, includes lunch and dessert. Payment is accepted at the door. Congregation Shomrei Torah is located at 2600 Bennett Valley Road, Santa Rosa.

My Name is Asher Lev

Thursday, September 24, Matinee, Marin Theatre Company
Lecture prior to performance included. \$25 for Friendship Circle members; \$28 for non-members. Includes box lunch and theatre ticket. Transportation is not provided but carpools will gladly be arranged.

RSVP: Fran Danoff, Friendship Circle Outreach Coordinator,
528-1476 or frand@jccsoco.org.



◆ **Simcha Sunday,**
October 25, 11 a.m.- 4 p.m.

Sonoma County's fall festival celebrating all things Jewish returns to the Santa Rosa Veterans Memorial Building. This is a great community-wide event and there is

something for everyone!

This year in addition to great food, fun and friends, we'll have dancing led by Yiddish dance master Bruce Bierman to live music with Jubilee Klezmer Ensemble, and innovative children's entertainer Diana Shmiana

Please contact Karen Gould, kareng@jccsoco.org, if you'd like to be involved as a volunteer, art vendor, food vendor, community resource table, advertiser, or sponsor.

Call the JCC office at 528-4222 or go to www.jccsoco.org for more information on Friendship Circle and all that the JCC has to offer.

The Friedman Center

Special rates for all Beth Ami members!
Call Ruth for a quote.

Ruth Turner, Director, 360-3021
Monday - Thursday, 9 a.m. - 3 p.m.
Friday, 9 a.m. - 2 p.m.

Earnings Devoted to Philanthropy SINAI MEMORIAL CHAPEL • CHEVRA KADISHA

1501 Divisadero Street
San Francisco, CA 94115
(415) 921-3636
FD 262

3415 Mt. Diablo Blvd.
Lafayette, CA 94549
(925) 962-3636
FD 1523

www.sinaichapel.org
pre-need funeral arrangements available
Gene B. Kaufman, Executive Director



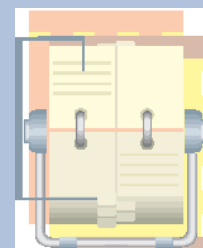
BETH AMI COMMUNITY NURSERY SCHOOL

- ◆ Jewish traditions and holidays celebrated
- ◆ Excellent early childhood education
- ◆ Discovery-based individualized curriculum
- ◆ Twos, Threes and Fours programs, low ratio
- ◆ Afterschool enrichment classes
- ◆ Extended day care

For more information, 707/360-3030

JEWISH COMMUNITY CONTACTS

Hadassah.....	Rose Ann Premi, 537-9208
Hillel.....	David Rubinstein, 795-5464
Jewish Community Federation	Kirsten Miller, 568-6207
JNF-Trees in Israel	Shevi Posman, 292-7438
Jewish Community Free Clinic.....	Donna Waldman, 585-7780
Jewish Community Relations Council	Suzan Berns, 415/957-1551
Jewish Family & Children's Services	Diana Klein, 571-8131
Jewish Community Center, Sonoma County	Beth Goodman, 528-4222
(all area codes are 707 unless indicated otherwise)	



RE+ Visioning

Working with you
Bringing design clarity
To your home

- * Design
- * Organizing
- * Space Planning

Bonnie Boren

707.528.1628

Bar & Bat Mitzvahs ~ Weddings



Envelope and
place card addressing
to match your
beautiful invitations

Persimmon

computeralligraphy@gmail.com ~ 707.872.5195



SINCE 1915

**15% donation to
Congregation
Beth Ami for each
Personalized
Stationery or
Invitation order**

**637 Fourth Street
Santa Rosa, CA 95404
Tel. (707) 546-2424
Fax. (707) 546-8750
invites@corricks.com**



**BERNSTEIN
ORTHODONTICS**
ADVANCED ORTHODONTICS FOR CHILDREN AND ADULTS

Rael Bernstein
D.D.S., M.S., INC.

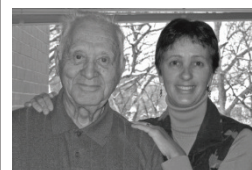
(707) 575-0600
515 FARMERS LANE
SANTA ROSA, CA 95405
www.bernsteinbraces.com

(707) 836-8360
8741 Brooks Rd. S. STE. 200
WINDSOR, CA 95492



SCHY

Leanne Schy
Graphic Design
& Copywriting
1145 Murray Ct.
Santa Rosa,
California 95404
707-528-4874
LSchy@Sonic.net



**TWEETEN
ELDERCARE
ADVISORS**

GUIDANCE . PLACEMENT . SUPPORT

A free assisted living placement service
for Sonoma County seniors and families

707.570.2589 www.tweeteneldercare.com



**ARTISTIC WEDDING
BAR & BAT MITZVAH
PHOTOGRAPHY**

Owen Kahn Photography

www.owenkahn.com
(707) 763-2219
(707) 527-6661

SAT/ACT Prep & Review SAT/ACT Prep & Review SAT/ACT Prep & Review

TEST DATES 2009

May 2 SAT & Subject Tests
May 4-15 AP Exam Week
June 6 SAT & Subject Tests
June 13 ACT

Please call to schedule for a FREE SAT Diagnostic Test.

GLOBAL ACADEMY offers the best exam prep for students seeking to improve scores beyond their potential. We provide individualized tutoring in SAT I/II, Critical Reading, Writing, English, Math and Science, Test-taking strategies, and AP Exam prep at flexible time schedules and affordable rates.

GLOBAL ACADEMY (707) 579-4SAT

1451 Guerneville Road
Santa Rosa, CA 95403
(Near Coddington Mall)



**Perfect For
B'nai Mitzvah**

**Henna
Face Painting
Airbrush Tattoos**

Fairy Dust Faces
707-981-4603 www.FairyDustFaces.com

Offering free face painting at Simcha Sunday 2009 compliments of Beth Ami.

Since 1956

Santa Rosa Shoes
"Quality You Can Stand On"

Specializing in Wide Widths & Large Sizes

2255 Cleveland Avenue
Santa Rosa, CA 95403
(707) 546-1083

MON - SAT 9-6
THUR 9-8
CLOSED SUNDAYS



**Serving
Sonoma County
since 1875
Family Owned
and Operated
Honoring all
Jewish Traditions**

ORTHODOX CASKETS AND SUPPLIES
TAHARA SERVICE FACILITIES
TRADITIONAL AND MEMORIAL SERVICES
SHIPPING SERVICES TO & FROM OUR AREA
PRE-PLANNING/PRE-FUNDING PLANS AVAILABLE

Telephone: 525-3730 • Fax: 525-3735
www.danielschapeloftheroses.com

*The Daniels Family and staff are available for
arrangements seven days a week.*

1225 Sonoma Avenue, Santa Rosa

CA Lic.: FD-209

CA Lic.: CR-92



**earth
in
upheaval
e. i. u., inc.**

for the service
and repair
of fine foreign automobiles

earthinupheavalautorepair.com

an unusual name with unusual excellence

1970-2008

Thirty Eight Years of Quality Service

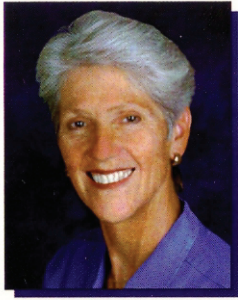
especially qualified in
Fuel Injection
Driveability
Electrical
Diagnostic
Emissions
Air Conditioning
Smog Pretest
Chassis Dynamometer

specializing in
Mercedes Benz
BMW
Volvo
SAAB
Japanese
S.U.V.s

198 S. HIGH STREET • SEBASTOPOL, CA 95472
Open Monday-Saturday • rental cars available

Richard Kahn

(707)823-3777



Carolyn Metz
REALTOR®
 Business (707) 537-2369
 Fax (707) 537-7427
 Cell (707) 481-3390
 cmetz@fhallen.com



460 Mission Blvd. • Santa Rosa, CA 95409

**Music for Your
 Special Occasions**

*Zim
 Zum*



Contact
Rose or Jon Batzdorff
jon@sierraortho.com

זימ זום
(707) 539-7051



Jeanne L. Crump, D.O.

Osteopathic Manipulative Therapy

1211 College Ave. Telephone: 707-544-4334
Santa Rosa, CA 95404-3907 Fax: 707-544-9165

PARK AVENUE

CATERING

♦ FREE CONSULTATIONS

♦ PARTY PLANNING

♦ KOSHER CATERING AVAILABLE

CALL FRAN PIOTRKOWSKI

707-793-9645 ♦ FRAN@PARKAVECATER.COM

707.292.9226



**LOW COST AUTO
 REPAIR**

Paul Kaltenbach
30 Years of Experience



Dedicated to the Client

Marlene Lowenthal, REALTOR®

Direct 707 303-3348

Fax 707 303 3340

Cell 707 322 6561

Century 21 Alliance
 1303 College Avenue
 Santa Rosa, CA 95404



Sholom Yaakov Mossman



4525 Montgomery Drive
 Suite 11
 Santa Rosa, Ca 95409
 (707) 526-1559
 (866) 890-4091 fax

Mossman Accounting Solutions
 Helping you make dollars by making sense of the numbers
QuickBooks. Tax Preparation. Consulting.
 www.mossmanaccountingsolutions.com

NORTH BAY BEHAVIORAL HEALTH, INC.
JOHN LEIPSIC, MD & ASSOCIATES

THE POWER OF INTEGRATED TREATMENT FOR KIDS, TEENS AND FAMILIES

Psychiatric evaluation, medication management and
 psychological testing

Psychotherapy for children, adolescents and adults

Experienced and competent clinicians



Intake Information – 542-8979
 1421 Guerneville Road, Suite 114
 Santa Rosa, CA 95403
 www.nbbhealth.com

Congregation Beth Ami Event RSVP Form

SHABBAT DINNER, 6 P.M.

- ☐ Friday, September 4
☐ Friday, October 2

Member Adult: # _____ @ \$14= _____

Non member Adult # _____ @ \$18= _____

Youth: (ages 5-12) # _____ @ \$7= _____

Welcome Shabbat with a delicious
catered Shabbat dinner,
evening services, live music with
Zim Zum and folk-dancing!

REGISTRATION AND PAYMENT

☐ I/We would like to make a contribution to the following
event: _____
for someone who would otherwise be unable to attend in
the amount of \$ _____

I will pay by credit card _____ check _____
(please check one)

Total enclosed or to charge: _____

Names of all attendees: _____

Phone: _____

CREDIT CARD INFORMATION:

Circle one: Visa _____ MasterCard _____

Cardholder's Name: _____

Acct # _____

Please RSVP

by the **Wednesday prior.**
Reservations accepted
after the deadline will have
a fee of \$5 added.



L'SHANA TOVA

TO YOU, YOUR FRIENDS AND FAMILY, A SWEET NEW YEAR FROM

Wine Country Kosher




Golden Sweet Honey Cakes

You can now order these lovingly hand-crafted spiced honey cakes
filled with plump golden raisins and farm fresh honey.

Each delicious kosher honey cake will be delivered with wishes for a sweet new year.
Our Wine Country Kosher cakes are \$10 each or \$8 each for orders of five cakes or more.

A percentage of each cake sold benefits your synagogue.

Please contact Andrea Nett, 707/206-8686 or winecountrykosher@sbcglobal.net to place orders or
for more information. When you call to place your order please have the following information ready:

-  Number of cakes at \$10 each (\$8 each for 5 or more cakes).
-  Number of cakes at \$5 per cake for delivery within Sonoma County.
Please call for shipping costs outside of Sonoma County.
-  Name, address and phone numbers of cake recipients.

To insure holiday delivery by September 18, orders must be placed by September 14.

Remember Wine Country Kosher for your catering needs year round.
We specialize in B'nai Mitzvah and lifecycle events.



Congregation Beth Ami

4676 MAYETTE AVENUE, SANTA ROSA, CA 95405

Non-Profit Org.
U.S. Postage
PAID
Permit No. 185
Santa Rosa, CA

ADDRESS SERVICE REQUESTED

Schedule of Services for September

Friday Evening, September 4

(Candle Lighting: 7:19 pm)

6:00 pm Family Shabbat Dinner

7:30 pm Shabbat Evening Services.

Saturday, September 5 • 16 Elul

9:30 am Shabbat Ki Tavo Services

Potluck lunch following services

(Saturday Havdalah: 8:17 pm)

Friday Evening, September 11

(Candle Lighting: 7:08 pm)

7:30 pm Shabbat Evening Services

Saturday, September 12 • 23 Elul

9:30 am Shabbat Nitzavim-Vayeilech Services

Potluck lunch following services

(Saturday Havdalah: 8:06 pm)

9:00 pm Selichot

Friday Evening, September 18

Erev Rosh Hashanah

(Candle Lighting: 6:57 pm)

7:30 pm Rosh Hashanah Services

Saturday, September 19 • 1 Tishrei

9:00 am Rosh Hashanah Services

(Saturday Candle Lighting: 7:55 pm)

Sunday, September 20 • 2 Tishrei

9:00 am Rosh Hashanah Services

5:00 pm Tashlich Services

Howarth Park

(Havdalah: 7:54 pm)

Friday Evening, September 25

(Candle Lighting: 6:46 pm)

7:30 pm Shabbat Evening Services

Saturday, September 26 • 8 Tishrei

9:30 am Shabbat Shuvah-Ha'azinu Services

Potluck lunch following services

(Saturday Havdalah 7:44 pm)

Sunday Evening, September 27

6:30 pm Kol Nidre Services

(Candle Lighting: 6:43 pm)

Monday, September 28 • 10 Tishrei

10:00 am Yom Kippur Services