



CONGREGATION
Beth Ami

4676 MAYETTE AVENUE, SANTA ROSA, CALIFORNIA 95405

Shofar

707-360-3000

FEBRUARY 2008

SHEVAT/ADAR 1 5768

Join us for a
*Musical Tribute honoring
Susanne & Al Batzdorff*
There are still tickets available
for this wonderful fundraiser.
Saturday, February 23, 6:30 p.m.
The Friedman Center

Please call the office at 360-3000 for tickets.

*A Musical Tribute to
Susanne and Alfred Batzdorff*



2008 HONOREES

THE 4TH BENNY FRIEDMAN
COMMUNITY RECOGNITION AWARD DINNER

**SAVE THE NEW DATE ...
IT'S NEARLY SHOWTIME!**

***A Theatrical Megillah Extravaganza
& Purim Banquet***

Sunday, March 23, 2008

***In the Friedman Center at
Congregation Beth Ami***

Times:

Noon: Luncheon

1 p.m.: Trivia & costume contest with cash prizes!

2:15 p.m.: Musical Megillah

Tickets:

Feast & Musical:

Adults \$36

Youth \$18

Children 12 and under are free

Trivia: \$5 per player

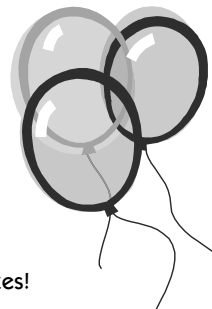
(purchased at event)

Musical Only:

Adults: \$10

Families: \$18

*A fundraiser
sponsored by
the Religious School
Committee in support of
the Or Ami Religious School*



In this issue...

Rabbi's Remarks	page 3
Events & Announcements	page 4
February Calendar	page 5
President's Page	page 6
Message from Melissa	page 6
Mitzvah Moments	page 7
Literary Lines	page 7
Israel from The Left Coast	page 8
Mazal Tov to our Bat Mitzvah	page 8
Yahrzeits, Anniversaries & Birthdays	page 9
Religious Practices	page 10
Nursery School News	page 10
Membership Directory Form	page 11
Lox Box Form	page 12
Teen Time: Chaverim & USY	page 13
Generous Contributions	page 14
Jewish Community Events	page 15
Advertisements	pages 16-18
Shabbat Dinner RSVP Form	page 19
February Services	back page

**New this
month:**

**The
calendar
features
all
scheduled
committee
meetings
for
February.
Please
contact
Melissa
Bloom
if you'd
like to
attend
any
of the
meetings.**

Congregation Beth Ami

4676 Mayette Avenue

Santa Rosa, CA 95405

Telephone: (707) 360-3000

Fax: (707) 360-3003

Email: office@BethAmiSR.org

Website: www.BethAmiSR.org

Rabbi George Schlesinger

Personnel

Rabbi George Schlesinger 360-3004

rabbi@bethamISR.org

Melissa Bloom, Executive Director 360-3011

execdirec@bethamISR.org

Yaakov Mossman, Bookkeeper 360-3012

bookkeeper@bethamISR.org

Elizabeth Jarlsberg, Administrative Support 360-3000

office@bethamISR.org

Karen Gould, Newsletter 360-3000

newsletter@bethamISR.org

Elisabeth Van Nuys, Rel. School Director 360-3000

rs@bethamISR.org

Jean Rudy, Nursery School Director 360-3030

ns@bethamISR.org

Ruth Turner, Friedman Center Director 360-3021

ruth@friedmaneventcenter.com

Gabor Por, Librarian 849-7682

library@bethamISR.org

Susy Raful & Helen Margolese, Gift Shop 360-3022

Rick Concoff, Chaverim Program Director 823-3916

concoff@sbcglobal.net

Sharon Benson, USY Advisor 703-4244

Sharon@scusynf.com

Sharon Benson, Chaverim Event Director 703-4244

sbenson@pacbell.com

Call the office at 360-3000 to leave a message for:

- ◆ Rosalie Schweit, Gift Shop Invitations
- ◆ Patty Bernstein, Torah/Haftarah Readings
- ◆ Francie Rogovin, Kitchen Manager
- ◆ Andrea Nett, Catering Manager

Hours of Operation

Beth Ami Main Office

Monday - Friday: 10 a.m. - 4 p.m.

Library

Tuesday & Thursday: 3:45 - 6 p.m.

Sunday: 9:30 - 12:15 p.m.

Gift Shop

Tuesday & Thursday: 3 - 5 p.m.

Sunday: 10 a.m. - 12:30 p.m. *(when Religious School is in session)*

Officers and Board of Directors 2007-2008

President, Andy Fleming, andyflem@gmail.com

Treasurer, Henry Cohn, henry_s_cohn@yahoo.com

VP for Administration, Al Batzdorff, abatz@sonic.net

VP for Youth and Education,

Dave Ballo, david_ballo@agilent.com

Library Committee Chair,

Susanne Batzdorff, sbatz@sonic.net

Religious Practices Committee Chair,

Patty Bernstein, basberyl@sonic.net

Membership Committee Chairs,

Richard Kahn and Marcia Gladstone

Bonnie Boren

Richard Lazovick

Martha Mazur-Lane

Susan Miller

Mark Rosen

Birgit Sacher

Rabbi George Schlesinger, Member Ex Officio

Nicole Burke, Nursery School Liaison, Member Ex Officio

Congregation Beth Ami Mission Statement

Through celebration, learning, prayer and community,
we seek to enrich our lives, transform our hearts,
help heal the world and sustain our Jewish heritage.

Congregation Beth Ami Vision

A vibrant, growing campus for Jewish living where
the joys of Jewish values and rituals are made accessible
and relevant to the everyday lives of our members.

A flourishing, prospering congregation enjoying
the wholehearted support, commitment and
involvement of all our members.

Deadline for March Shofar: February 15

All editorial submissions must be received in the *Shofar* box
in the Beth Ami office or via email on or before the deadline.

**All submissions are subject to editing for clarity, brevity
and content.** Please submit articles as Microsoft Word
documents via email attachments. Contact Karen Gould,
Editor, at 360-3000 or at newsletter@bethamISR.org with
corrections, concerns or questions.

The *Shofar* is a periodical issued monthly except for a combined
May/June/July issue. It is published by Congregation Beth
Ami, 4676 Mayette Avenue, Santa Rosa, CA 95405. All members
in good standing receive the periodical free. Yearly
subscriptions are \$25.00.

This month's issue is: Volume 13, Issue 6

Issue Date: February 1, 2008



RABBI'S REMARKS

Rabbi George Schlesinger

Approximately a year ago, a number of our synagogue members approached me with the request for an adult Bar and Bat Mitzvah class. Not sure about the response, I agreed to hold an orientation meeting to assess the interest in such a class. While some who attended that first meeting were unable or unwilling to join, others who were absent at that meeting have been regulars ever since we began last March. Each week nearly twenty member of the synagogue have met to study, to learn, to question, and to investigate.

We began the first weekend in March, and we've met nearly every Sunday for the last 11 months. We've studied Jewish theology, customs and ceremonies, life-cycle events, holidays, and now are beginning to study the structure of synagogue services, the individual prayers and the rituals of synagogue attendance. The end product of all this study is still not quite known, as there are some students who wish to celebrate just as our 13-year-olds do and some students who wish to have varying levels of involvement in the Shabbat morning service. Some of the students are quite proficient in Hebrew and others have yet to learn the most basic skills of Hebrew reading. This is definitely a challenge for each of them.

As their teacher, this process has been most gratifying, for as a rabbi, one of the greatest joys I have is teaching our heritage and tradition to others. Being able to teach others what is so dear to me has often energized and motivated me beyond my wildest dreams. Over the years, I have had the pleasure of teaching the smallest children to the oldest adults. And with the exception of kindergarten and 1st grade, I believe I have had a classroom experience with every grade and age level since I first began teaching in 1968. And it has never gotten stale or tiresome. When I enter a classroom, it's like someone drops a coin in the nickelodeon: I just keep going and going and get more energized as the time passes. Even now, the highlights of my week are when I meet with our pre-school children each Friday to sing with them in preparation for Shabbat (the children are so bright and enthusiastic; they soak up everything that is presented to them), when I teach my adult education classes, and when I lead the Shabbat morning Torah discussion.

Each grade and each class brings certain joys and challenges; each student asks questions that are serious and probing. And yet, so often people are unsure of themselves and of their questions. It is not at all unusual for a student/person to stop me and say, "Rabbi, I have a stupid question." My immediate response is, "There are no stupid questions, only insensitive answers." The answer to the question may be simple or complicated and the questioner might feel embarrassed...thinking that s/he should have known the an-

swer, but if this person has the question, it deserves the serious attention and response that any other question would receive.

One of my colleagues (I honestly don't remember who) once shared a thought about teaching and Judaism that has remained with me for years. He said, "I love my Judaism and my tradition; I love my congregants. My challenge is to get the two of them together to love each other." That is the role that we rabbis (as teachers) try to fulfill.

But back to the Adult Bar/Bat Mitzvah class. There is something very special about teaching adults. Approximately twenty students with widely varied backgrounds have attended the classes these past eleven months, and I found the students to be thoughtful, inquisitive, eager, and serious. And one of the wonderful aspects of teaching adults is that they are deeply motivated to learn. No one is telling them that Jewish education is important; no one is "demanding" or "forcing" them to attend, and no one is "bribing" them with the promise of a Bar/Bat Mitzvah as the culmination of Jewish education. Adult students are in the class because they wish to learn for learning's own sake. In Hebrew we call this "Torah Lish-ma." Teaching adults is truly rewarding.

Of course, one of the issues we tackled was the definition of *Mitzvot*. While the word is used to describe "good deeds," the true meaning of the word is "commandments." *Mitzvot* are the divine commandments given by God in the Torah and subsequent Jewish sacred writings. And we discussed the role of *mitzvot* in our lives. One of the most important lessons is that NO ONE can perform all 613 *Mitzvot* and EVERYONE is on a continuum of observance between doing nothing and trying to "do it all." So often I hear from people who say, "If I can't do it all, I might as well do nothing." Judaism, however, is not an "all or nothing" religion. We believe that the fulfillment of any *mitzvah* leads to the observance of another and then another. So, of course, it's fine to start small, and hopefully, build to ever-greater observance over time. And each person's place on the continuum can change over time. There may be times when we move towards greater observance and times when we move towards less observance, but in each case the movement should be made only after serious consideration and thought about what greater or lesser observance means in the context of our lives.

Obviously, it is my wish that every member of the congregation would engage in a serious study of our traditions, our heritage, our history and our culture, and through that study would find meaning and fulfillment in living a more connected Jewish life. Please let me know if such a "journey" appeals to you.



EVENTS & ANNOUNCEMENTS

**Welcome to our new members
Anya & Gabor Por**

Susy Raful essay contest countdown

Remember the Susy Raful Essay Contest! This named prize will be awarded to a Jewish Sonoma County High School student who writes the most outstanding essay on the Holocaust (Shoah). The entries, **due on March 20**, will be expressions of personal reflections, feelings and inner thoughts on what the writer has learned about the Shoah and the Jewish people. The \$500 prize will be awarded during the community Yom Hashoah event. Please look at the Essay Contest Invitation, available at www.bethamir.org.

Ongoing programs at Congregation Beth Ami

♦ **THE JCC FRIENDSHIP CIRCLE EXERCISE CLASS** meets Wednesday and Fridays in the Beth Ami Social Hall from 10:15 - 11:30 a.m.

Tuesday

♦ **TORAH STUDY WITH RABBI SCHLESINGER** every 2nd & 4th Tuesday at 10 a.m. in the Friedman Center Board Room.
February 12 & 26
March 11 & 25
April 8

♦ **ISRAELI FOLK DANCING** 7 p.m., Friedman Center. For more info contact Leanne Schy at 528-4874 or Leanne@sonic.net.

Thursday

♦ **TORAH & TALMUD STUDY WITH RABBI SCHLESINGER**, 7 p.m., Friedman Center Board Room

Torah	Talmud
February 14 & 28	February 7 & 21
March 13	March 6 & 27
April 3	April 10

Sunday

♦ **Adult B'nai Mitzvah Class**, 11 a.m. - 12 p.m., ongoing. Please call Rabbi Schlesinger, 360-3004 if you're interested in joining.

Thank you to Leena Newcomb

for her generous donation of the beautiful portrait of Elsie Rich she took for Elsie's 106th birthday last summer. It is currently displayed in the bookcase near the front of the sanctuary.



Book Discussion Group

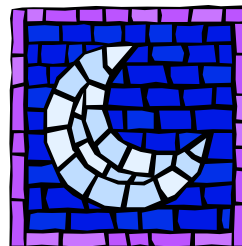
We meet on the first Wednesday of each month from 10 – 11:30 a.m. at Congregation Beth Ami. If you would like to join our group, we can always make room for a few more. For information call Susanne Batzdorff at 538-9731.



February 6: *The Faith Club*

Due to a scheduling conflict at the Bureau of Jewish Education, we have to make another change in our program. Please take note of this change in schedule:

March 5: *The Palestinian Lover*
April 2: *The Yiddish Policemen's Union*
May 7: *Panther in the Basement*
June 4: *Suite Française*
July 2: *Freedom: The Story of My Second Life*



Rosh Chodesh

On **Wednesday evening, February 6** we will gather to discuss the best selling book, *Suite Française* by Irene Nemirovsky translated by Sandra Smith. (It's available through Amazon.com new and used.)

Ethel Schy will be leading the discussion, and all are encouraged to come, whether or not you have had time to finish or even to start the book!

For further answers to your questions, please contact Vivian Klein, 538-8679 or viviklein@earthlink.net. See you then!

~Vivian Klein

Monthly calendar only in hard copy of Shofar



President's Page

Andy Fleming, President

Building a culture of leadership

One of our former presidents counseled me, early in my term, to avoid setting too many goals, and resist the temptation to try and fix all of the things that seemed dysfunctional. He said that accomplishing one real change in my term would be a significant success.

I think that we have done that well so far. With six months left in this synagogue year, I am ambitiously suggesting another large goal that I believe we need to achieve. It addresses something that I have done poorly – the creation of a succession of synagogue lay leaders. Thus far, we have failed to create a synagogue culture that develops leaders and embraces wide volunteer participation.

My goal is stability and continuity of lay leadership. We need to create a way to constantly enable and encourage people to serve as builders and leaders in the synagogue. While we have a good, stable staff of synagogue professionals, we can leverage all of their skills if we have functioning committees and engaged leadership on the Board. These opportunities to volunteer provide some of the most enjoyable and fulfilling experiences in synagogue life. If the system of applying our volunteer energy is in place and working, we can educate and train a constant population of people willing and able to step into positions of responsibility.

This “system” provides a path for anyone in the congregation to become involved in the synagogue. Its components are:

- ♦ **Working on a committee.** Committees are the main ways of implementing tasks. There are committees that create programming, that are responsible for the maintenance of the physical facility, that work with the rabbi on matters pertaining to

religious life at CBA, that are responsible for our kitchen. Working on a committee is a good way to learn the nuts and bolts of how things happen in a synagogue. It is a good way to build relationships with co-workers and with staff members. And committees truly are the means to expand the definition of what a synagogue can be.

- ♦ **Chairing a committee.** Leading a committee – or creating one to fill a gap in our activities – requires some skills additional to those of a committee member. The chairperson schedules and leads the meeting, and has a significant influence on setting a committee’s priorities. An effective committee leader is a good listener, and a synthesizer of ideas. The chairperson also interacts frequently with staff, and gets insights into the entire operation of the synagogue.
- ♦ **Board member.** Ideally, the Board consists of many of the committee leaders, and of people who have experience on committees. The Board oversees the activities of staff and the organization, and sets the goals and priorities of the synagogue. This extends to areas of finance, personnel, and programs.
- ♦ **Officers.** Ideally, officers have had experience on committees, and the Board. They are influential in setting the agenda for Board actions, and for interfacing with staff.

In the coming months, I will be leading an effort to recruit and encourage participation at all of these levels of leadership. We need to create a new generation of members who want to take ownership for their community’s success.

Message from Melissa

Melissa Bloom, Executive Director

First, I would like to say thank you for the amazing welcome that I have received from the Congregation Beth Ami community. It shows a lot about the congregation by the generous and sincere welcome. I am looking forward to working with everyone to help Congregation Beth Ami grow for many years to come.

- ♦ **Kol H’kavod**, job well done, to Congregation Beth Ami Community Nursery School on passing the five-year health and safety inspection with flying colors. A special thank you to **Jean Rudy**, Nursery School Director, for noticing we were due for such an

inspection and jumping on the ball to make things right before the surprise inspection happened.

- ♦ **Toda Raba**, to **Al Batzdorff** for handling the alarm system that is now fully in place and working as it should. Also, a **toda raba**, to **Robin Winning**, **Karen Gould**, **Al Batzdorff**, and **Andy Fleming** for holding down the fort as the interim team for the Executive Director position. It was nice to come into a position that had not been neglected.

Please know I have an open door policy. Come by anytime with news to share or any concerns, or just to introduce yourself and say hello. If you would like to schedule a time to meet with me one-on-one, feel free to call me directly at 360-3011, or email me at execdirec@bethamisr.org.



Mitzvah Moments

Tish Levee

P'kuach nefesh—saving a life

Here's a chance to save a life...maybe yours. March is Colorectal Cancer Awareness Month. This is the second leading cause of cancer deaths, killing more than 55,000 people annually. If you are over 50, or have a higher than average risk of colorectal cancer, see your doctor for a screening. If everyone over 50 did this, the death rate from this cancer would be cut in half. To assess your risk, spend five minutes and take the Great American Health Checkup at www.cancer.org. More information is available there or by phone at 1-800-227-2345.

Bikur cholim—visiting the sick

A lot of the Mitzvah Moments I write about require an Internet connection. Here's one for everyone. What about calling or sending a note to someone on the M'shberakh list? Call the office if you don't have a directory. Tova Rostov is at the Lodge at Paulin Creek and loves visitors, but call first. She may not remember you or remember your visit, but she will be thrilled while you are there.

Tikkun olam—repairing the world

Have a martini and do a mitzvah. Last month it was coffee, this month it's vodka—ABSOLUT vodka to be precise. From February 4 to the end of the year, participate in the ABSOLUT Global Cooling campaign. For every registered code for a bottle or cocktail of ABSOLUT, ABSOLUT Citron or ABSOLUT Mandarin vodkas, they will donate \$1—up to \$500,000—to three environmental nonprofits. Go to http://www2.absolut.com/globalcooling/cooling_home for more information and to register your purchases. (Must be 21).

Falling down on your New Years Resolutions?

Here's a diet and exercise plan for you and the planet. Walk or cycle half an hour a day instead of driving, and save the planet and your health at the same time. It's estimated that if all Americans ages 10 to 74 walked just half an hour a day *instead* of driving, we could cut our annual CO2 emissions by 64 million tons, save 6.5 billion gallons of gas, and collectively shed 3 billion pounds.

Missed planting a tree for Tu B'shevat?

Here's another chance. Support the new Israeli Pioneers and help develop settlements in the Negev by having an olive tree planted on your behalf for \$18. Students from Israel are planting 500 trees in nine student villages in the Negev. Go to <https://www.israel-catalog.com/?category=1073> for more information and to donate.



Literary Lines

Gabor Por, Librarian

The library is entering a new phase of its existence. Susanne Batzdorff created it and worked tirelessly for decades maintaining it. Now that she is ready to pass the baton, I, Gabor Por, am taking it over.

Let me quickly introduce myself. On one hand I am fresh out of a masters program, finishing up my library degree in the coming weeks. On the other hand, I have an extensive educational (3 BAs), technical (13 years in the Internet industry) and Jewish background. The latter includes being one of the founders of the first progressive Hungarian Jewish community, studying one year at a rabbinic seminary, and cataloging two Jewish libraries. I moved to the area last summer to be near my wife's family, including her father, Rick Concoff, the Chaverim Program director.

I would like to ensure that the library will continue to serve the community's needs and wants. In order to do so I would like to hear from every one of you who is interested in the library in one form or another. Share with me your ideas, hopes, aspirations, concerns, suggestions. You can reach me at library@bethamir.org or at 849-7682. I will also be coming to synagogue events so I can meet with you in person. It is important to me that each member of this congregation has a sense of ownership of this library.

I would like to reinvigorate the **Library Committee**. If you are interested in being involved shaping in of the future of the library more directly, please do not hesitate to let me know. And/or if you would like to volunteer in helping to extend our opening hours, we are always looking for a few good men and women.

Please be assured that I will keep the library's tradition alive and reenergize it simultaneously. Some of the upcoming changes may include longer opening hours, more frequent updates, strengthening the web presence of the library, and serving tea. This is just the beginning in the process of making it an even warmer, more welcoming place than it already is.

I would like to thank Susanne for creating the library that I now have the honor of working with. I am hoping she will stay involved with it for many years, without the pressure of being fully responsible for it.

Looking forward seeing you in the library!

Library Hours:

Sunday: 9:30 a.m.-12:15 p.m.

Tuesday and Thursday: 3:45-6 p.m.

And by appointment, call Ruth Rosenberg at 544-2919.





Israel from the Left Coast

Bob Raful

In spite of the turmoil in the daily news from the Middle East, I persist in looking for “feel good” stories, so I can counteract the “hard news” with news from the “real” Israel. Here are a couple of items that focus on the younger generation:

Three stamp designs by four elementary school children have been chosen among tens of thousands to create official stamps in honor of Israel’s 60th anniversary of independence.

The judges panel chose third grader Daniel Hazan of Sderot; eighth grader Itai Epstein of Holon and sixth graders Idan Vilker and Yuval Sulima from Ramat Hasharon. Their names, as designers, will be printed on the edge of the stamps.

One depicts Israel as a home; another shows a girl on a balcony looking through a telescope at the stars forming 60; while the third uses letters, numbers and symbols used in sending an SMS message to say “I Love Israel.”

The stamp competition gave pupils the opportunity to participate in the independence anniversary celebrations. The competition aroused much enthusiasm among youngsters, and the winning designs will be put on display at May’s Israeli philatelic exhibition in which stamp lovers from 60 countries will participate.

Even the scariest things become a little less scary when you have a friend by your side. Now a study by Tel Aviv University proves just that. Israeli researchers found that caring for a stuffed toy animal helps soothe psychological stress in young children exposed to traumatic or stressful life events.

In the study led by Dr. Avi Sadeh of TAU’s Pediatrics Department, 74 children (40 boys and 34 girls), with an average age of five years, were given a stuffed dog known as a “Huggy-Puppy” – a floppy-eared, furry doll with droopy legs long enough to wrap the owner in a “hug.”

The children, all of whom were living with their families in shelter camps during 2006’s month-long conflict between the Israeli Defense Forces and Hezbollah forces in southern Lebanon, were instructed to look after the puppy, who was “sad because he was far from home, didn’t have friends, and needed care from a buddy.”

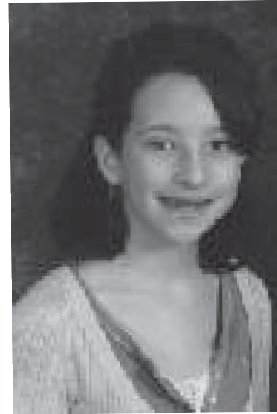
There was a marked improvement following the low-tech intervention. Nearly 83 percent of the children had experienced one or more symptoms of severe stress including separation fears, agitation, nervousness, aggression, excessive crying or sleep disruptions prior to the study. Three weeks after receiving the puppy, the children with the strongest attachment to their toy had lower stress levels.

Larger follow-up studies, involving nearly 300 children also suffering from the effects of the Second Lebanon War, confirmed the relationship between psychological attachment to a Huggy-Puppy and lowered stress levels.

So, hug a loved one tonight!

Mazal Tov to Our Bat Mitzvah

Saturday, February 23
17 Adar I 5768
Julia Morrison



My name is Julia Morrison. On February 23rd, I will celebrate becoming a Bat Mitzvah. My Torah portion is Ki Tissa.

I am a seventh grader at Rincon Valley Middle School. I play harp in the Santa Rosa Harp Ensemble, and I enjoy spending time with friends. I live with my mom, dad, and brother, Nathaniel,

who is 18 years old. My brother Douglas, 21 years old, is currently a junior at Stanford University.

I have been coming to Beth Ami since I was born. I started my Jewish education at Beth Ami with preschool at the age of 2, and I continued through Religious School from kindergarten until 7th grade. Because I have spent so much of my life at this synagogue, Beth Ami feels practically like a second home.

For my tzedakah project, I have been going around to retirement homes, such as Friends House and The Lodge at Paulin Creek, to play my harp for the residents.

I hope that all of you can help me celebrate as I become a Bat Mitzvah.

Congregation Beth Ami

Judaica Gift Shop

LAST CALL FOR CHANUKAH MERCHANDISE
SPECTACULAR SPECIAL SALE
ROCK BOTTOM PRICES
FOR A VERY LIMITED SELECTION OF
ELECTRIC MENORAHS &
CHANUKAH DESIGNER TRAYS
ON SALE ONLY THROUGH FEBRUARY 15TH



HOURS

Tuesdays & Thursdays: 3-5 p.m.
 Sundays: 10 a.m. - 12:30 p.m.
 (when Religious School is in session)



February Yahrzeits

Secular dates correspond to Hebrew date of death
Observance of yahrzeit begins at sundown the previous day
All yahrzeits observed at Beth Ami

Announced on February 1 & 2

February 2 Zislye Bas Mendel
Laib
Mother of Leo Gurevitch
February 2 Sylvia Gerstein
Mother of Abe Gerstein
February 2 Sophie Shapiro
Mother of Everett Shapiro
February 3 Jacob Tobias Pechner
Father of Joyce Zenick
February 7 Milton Landesman
Father of Marlene Lowenthal

Announced on February 8 & 9

February 9 Sam Dzik
Father of Judith Dzik
February 9 Nathan Planzer
Father of Tova Rostov
February 10 Mae Bernstein
Grandmother of Marc Bernstein
February 10 Aaron Jack
Spiegelman
Brother of Gail Negrin
Uncle of Ronit Sepulveda
February 10 Yakov Zalessky
Brother of Sheyna Bakman
February 15 Deana Boorstein
Mother of Seymour Boorstein

Announced on February 15 & 16

February 16 Sylvia Feingold
Mother of Stanley Feingold
February 16 Andor Taubner
Father of Susy Rafal
February 16 Gorge Tyutinman
Father of Adolf Tyutinman
February 17 Anne Rothenberg
Aunt of Anne Mann
February 17 Arthur Chester Sharon
Grandfather of Noorillah Karr
February 18 Michael Calvin Brust
Father of Barbara McGee

February 18 Phillip Feingold
Brother of Stanley Feingold
Father of Vivian Klein
February 21 Barbara Milstein
Mother of Susan Milstein
February 21 Sol Tenser
Father of Dorothy Marder

Announced on February 22 & 23

February 23 Polly Boyd
Mother of Elizabeth Boyd
February 23 Glen Branagan
Father of Barbara Branagan
February 24 Bernard Bernstein
Father of Marc Bernstein
February 26 Anna M. Branagan
Mother of Barbara Branagan
February 26 Jacob Stromer
Father of Marilyn Stromer
February 27 Fannie Peretz
Mother of Evey Abramowitz
February 27 Hatskel Pipkin
Father of Sheyna Bakman

February Birthdays

2 Debbie Shapiro
3 Ellen Mundell
5 Eli Cohen
5 Hope Rambo
6 Julie Simkovitz
7 Rayme Shapiro
8 Ed Harman
10 Edith Friedman
10 Semyon Pekker
11 Dave Ballo
11 Andy Fleming
14 Ira Cohen
14 Daryl Schloss
15 Barbara Branagan
17 Maya Colvin
18 Sid Burwell
18 Ira Lowenthal
19 Alfred Batzdorff
20 Yona Miller
21 Audrey Darby
21 Elizabeth (Betty) Boyd
23 Bernice Fox
23 Barbara McGee
24 Alicia Tonelli
25 Boyd Lane
27 Dorothy Gerstein
27 Michael Newman
28 Stuart Ross



February Anniversaries

4 Harry & Edith Friedman
16 Stuart & Lydia Ross
20 Marc & Patty Bernstein
22 Julius & Dolores Trichter
23 Irvin & Vivian Klein





Religious Practices

Patty Bernstein, RP Chair

Join us for Shabbat Across America March 7, 2008

“Six days you shall work; the seventh day is the L-rd’s.” Thus, the rhythm of Jewish life is defined, each giving meaning to the other. Shabbat represents a radical gift the Jews gave the world, the notion that everyone — even slaves, even animals — is entitled to a day of rest. In this world, however, we do not seek a life of rest. For six days a week we work, not only creating and sustaining life, but repairing a world that is broken; on the seventh day, we pause from our creation to admire G-d’s handiwork.

~from *Shabbat & daily life*, www.ritualwell.org

Every Friday night — all over the world — Jews leave their workweek behind, light candles, welcome the Sabbath, and let time wash over them. What a joyful experience. What a wonderful way to connect to G-d and to other Jews. What a gift!

This year, the Religious Practices Committee and the Membership Committee have committed to bringing Shabbat to anyone who wants to experience it through the *Shabbat Across America* program organized by the National Jewish Outreach Program. On **Friday night, March 7**—our regular family Shabbat dinner night—we invite you to enjoy a positive and joyous Shabbat experience and, of course, a kosher dinner. We hope you’ll invite Jewish friends to join you and get the “Shabbat” word out.

Look for flyers, posters, and programming materials in the next few weeks ... but save the date—March 7—and make your reservations for Beth Ami’s *Shabbat Across America* program and dinner.



Nursery School News

Jean Rudy, NS Director

Much time has passed since you have read about your wonderful Nursery School in the Shofar. As an educator in the field of Early Childhood Development for over 20 years, and the mother of five, ranging in age from 13-29, I believe I have found the joy that everyone seeks in blending career with family, as your Nursery School Director. It is my pleasure to update you with the many exciting programs that this new year will bring.

On the business side of Nursery School operations, I am pleased to announce that we passed the five year health and safety inspection with flying colors. The play yard, kitchen and each classroom were thoroughly inspected. All records regarding staff and students are also in compliance.

One of our new programs is the lending library which started this January. The Nursery School library has been moved to an organized space in my office. And, as “librarian,” I look forward to sharing many stories with our children and parents. Each child may check out one book on the last day of their school week and are asked to return it when their school week begins. A bookbag has been provided to each child, to keep the book special, clean and safe. Book borrowing is an essential learning experience and will bring our children and parents additional resources for those very special lap times at home and will build on the excitement and discovery of blending school experiences with family, after hours. The new lending library was created to inspire the joy of reading, and **we welcome ANY book you would like to donate, new or used, appropriate for ages two through five.** AND! We welcome the stories you can share with us about the book.

January brings other new beginnings as we have started our parent book group. Our “Parent Book Group” is supported by the Jewish Community Federation (JCF) of San Francisco, the Peninsula, Marin and Sonoma Counties. JCF works to protect and enhance Jewish life through caring for those in need, strengthening and securing the safety of the Jewish people, and fostering Jewish renaissance at home and in Israel and other countries. For more information, call 415/777-0411 or visit www.sfjcf.org.

Our first meeting was Monday, January 28 at 9 a.m. We are reading *The 7 Worst Things Good Parents Do*, authored by John Friel Ph.D and Linda Friel M.A. As this column is being written before our book club meeting, I can hope for a meeting of comfort and welcoming, lively discussions, and a variety of experiences shared by the parents.

It filled my heart to be so warmly welcomed at the Shabbat dinners I attended with you. Please know that my door is ALWAYS open to you. My email is NS@BethAmiSR.org.

I wish you a safe, healthy and Happy New Year.

Even if you have already turned a form for the directory, please
fill this one out and return it to the CBA office
by February 15, 2008

4676 Mayette Avenue, Santa Rosa, 95405

Fax: (707) 360-3003

AD INFO: If you'd like to place an ad, please include a business
card and a check for \$18.

Member Listing Information Beth Ami Directory 2008

Member Names: _____

For more than one last name, please indicate whose name should be used
to alphabetize in the Directory.

Children (minors/at home/college): _____

Mailing address: _____



Telephone number _____

Cell number(s): _____

E-mail address(es): _____

Please complete the following—for use by Rabbi/office only.

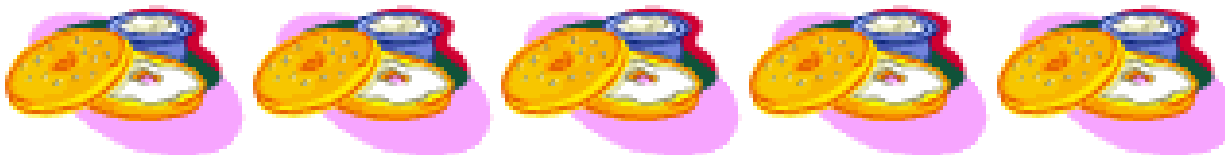
Example: **Moshe** (male) ben **Dov Beryl** (father) v' **Sorah Rivkah** (mother)

Hebrew name _____	ben _____	v' _____
Head of household male	father	mother

Hebrew name _____	bat _____	v' _____
Head of household female	father	mother

Children's Hebrew names _____
(please note variance in father's or mother's Hebrew name)

PRE-ORDER YOUR LOX BOXES TODAY!



Spend your super bowl afternoon with lunch made by SCUSY! All proceeds benefit the youth of **Sonoma County United Synagogue Youth!**

Boxes contain bagel, lox, cream cheese, onion, tomato, pickle, juice and a dessert! Order yours today. Boxes will be available for pick-up: February 3, 2008 from 9:30 am – 1:00 pm on the Beth Ami courtyard.

All boxes are lovingly constructed for you by Sonoma County USYers.



RESERVE YOUR LOX BOX TODAY!

Call 478-2663 for more information

Make checks payable to SCUSY c/o Beth Ami

_____ Only \$12!!

Name & phone number:



Chaverim Update

Rick Concoff,
Chaverim Director

Chaverim is an exciting youth program that had its inception this fall as Beth Ami and Shomrei Torah combined forces to create a new stand alone Jewish Youth Education and Social Program for Sonoma County Jewish teens. The program offers dinner/discussion on related Jewish issues for each age group every other week as well as combined social activities, celebrations and trips.

This year is the inaugural year and we are so proud of our close to 100 members.

We bring these activities to Jewish youth in the hope and prayer that they will have a positive spiritual bridge between Bnai Mitzvah and college that provides them with a deep, meaningful and educationally stimulating adolescence.

We also hope that their social life with other Jewish teens will segue to involvement with college Jewish life through organizations like Hillel. Ultimately, we hold that they will consciously choose to live a Jewish life in their adult years.

The Chaverim program has been guided by the Rabbis and our wonderful Committee led by Blair Pleasant. We have been supported by both synagogues in facility and administrative tasks. Sharon Benson, our Events Director is bringing us a wide variety of exciting social events and coordinating the logistics of our program. All and all, we are so well taken care of.

We would like to thank the people who have graced us with donations and remind the community that we hold that no student should miss the opportunity for financial reasons.

If you have a Jewish teen or know one who is not involved, please contact either synagogue for information.

We are proud of our program and look forward to its future growth.

Beth Ami bowling teams (two women's Rosh Chodesh teams and a team from the Beth Ami Board of Directors) raised \$1,858 to support Jewish Family and Childrens Services.



Your USY

Sharon Benson, USY Youth Advisor

Time for another SCUSY update! Sonoma County USY has a lot of upcoming events. On Sunday, January 20 we participated in a challah baking class with Altie Wolvovsky as our instructor. Thanks for spending the afternoon with us Altie!

Our lox box fundraiser is right around the corner!

If you have not yet ordered your Lox Box come see Lizzie in the office for your order form.

As you know, these boxes always sell out! Be sure to get yours! SCUSY members please attend the Lox Box sleepover (Saturday, February 2 at 6:00 p.m.) where we will put together the boxes, make bracelets for SATO and have a good time with friends.

On February 15-17, SCUSY will be attending the regional Intensive Studies Seminar (ISS) in Saratoga. For applications, please visit our website. We will discuss Judaism and our purpose as Jews.

We will also be participating in the BJE Feast of Jewish Learning on March 2, so be sure to stop by the SCUSY booth!
Sharon Benson & Haley Pleasant

Sharon Benson
SCUSY Youth Advisor, sharon@scusynf.com
and
Chaverim Events Director,
sbenson@pacbell.net
703-4244



Generous Contributions to our Congregation

The next time you are looking for a meaningful way to celebrate a joyous occasion, remember a loved one, or comfort a mourner, please consider a donation to Congregation Beth Ami. When you make a gift, a card is sent to the honoree or the family and your donation is proudly acknowledged in the *Shofar*.

The minimum donation for each occasion is \$7.50. Congregation Beth Ami truly appreciates your support.

General Fund

In memory of my mother, Ruth
Weisburg Baruch

Esther Baruch

In memory of J.J. Fitzgibbons

***Art, Charlene, Sonya, Elly, Arie &
Sari Bornstein***

Speedy recovery to Sylvia Sucher

Helen Dresser

In memory of Paul Pimsler

Laura Duggan

In memory of Fitz - a good man and a
good friend to Beth Ami

In honor of Henry Cohn as chairperson
of the Community Service Award
banquet

Andy & Nancy Fleming

In memory of J.J. Fitzgibbons

Gary & Barbara Greensweig

In memory of my mother, Estelle Mann

Anne Mann

In memory of Helen's mother

In memory of J.J. Fitzgibbons

Helen & Arthur Margolese

In memory of Ethel Levine

Ruth Mazner

A generous contribution

Elliott Morrison & Susan Milstein

A generous donation

Edith Newman

In memory of Mariya Antonovsky

Olga Pekker

In memory of Ruth's mom, Olive
Boyer

Ira & Ruth Rosenberg

In memory of Fitz Fitzgibbons

In honor of Paula Schlesinger's
birthday

In honor of Art Margolese's birthday

Judi Rosenthal

In memory of my brother, Raymond
Lachman

Vivian Salmon

A generous donation

Darrell Watkins

Library Fund

In memory of my mother Rosa Leah
Bas Natan, my brother Morton
Schneider, and my sister Edith
Volkman

Evelyn Gurevitch

In memory of my father, Hillel
Shiffman

In memory of my brother, Max
Shiffman

In loving memory of my husband,
Henry J. Rich

Elsie Rich

Malk Fund

Congratulations to Edith Newman on
the engagement of her daughter Carol
to Barry, with love, Phyllis & Everett
Congratulations to Carol Newman on
your engagement, with much love,
Phyllis & Everett

Phyllis & Everett Shapiro

Rabbi's Discretionary Fund

In memory of my mother, Munja Pipkin

Sheyna Bakman

In memory of Charles Feingold

Stanley Feingold

A thoughtful donation

Shirley & Larry Klapow

In memory of Tillie Schuffman Sher

Norma O'Brien

In honor of Evey Abramowitz

In memory of Kenneth Lipfield

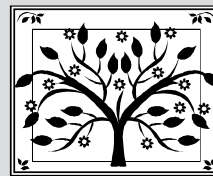
Arline Thomas

Religious School Fund

A generous donation

Darrell Watkins

Simcha Board • Tree of Life



We gratefully announce the newest leaf on our tree:

***Thank you to the BACNS Fundraising Committee
2007-2008***

For their hard work and dedication

Honor thy mother...also thy aunt, uncle, cousin, child, best friend, teacher
with an engraved leaf on our Simcha Board commemorating any joyous
occasion, bestowal of an honor, or cause for thanksgiving.

• Leaf \$360 • Small Stones \$1000 • Large Stones \$2500 •

We also provide the opportunity for you to
memorialize loved ones on our Yahrzeit Board.

A plaque is \$450.

JEWISH COMMUNITY EVENTS

Spiritual Awakening in the Zohar: **Study Session with Rabbi Lavey Derby** **Sunday, February 10, 2:00-5:00 p.m.**

Congregation Shomrei Torah, \$36

The Zohar is widely considered the most important work of Kabbalah, Jewish mysticism. It is a mystical commentary on the Torah, written in medieval Aramaic and medieval Hebrew. It contains a mystical discussion of the nature of God, the origin and structure of the universe, the nature of souls, and more.

For more information contact Dr. Sheila Katz, Director, JCC Jewish Meditation Program at sheilak@jccsoco.org, or 528-4222. Brought to you by CST Life Long Learning and the JCC Jewish Meditation Program.

Friendship Circle Luncheon at Beth Ami **Monday, February 25, noon**

The featured speaker will be Phyllis Rosenfield, Executive Director, Listening For A Change. The fee for this event is \$8 for members of Friendship Circle \$10 for non-members. This includes lunch and dessert. Payment is accepted at the door. Congregation Beth Ami is located at 4676 Mayette Ave., Santa Rosa. RESERVATIONS ARE REQUIRED. Call Fran Danoff 528-1476 to save your place.

Yom Hashoah Commemoration 2008 **Sunday, May 4, 2 - 3:30 p.m.**

The Friedman Center

The theme of the Sonoma County 2008 Yom Hashoah commemoration on May 4 will be transmitting meaningful Holocaust memory to coming generations.

The featured guest speaker is Dr. Debbie Findling. Her topic will be building the connection between memory and action. Speaking for the survivor community will be Sonoma county resident Miriam Dregey, a hidden child who survived through the actions of her family.

The program will include a candle lighting ceremony by camp survivors and participation by the next Jewish generation in a pledge of remembrance. Community rabbis, cantorial soloists, and community musicians will contribute the liturgical and musical setting for the event. The teen winner of the Susy Raful Essay Contest will present the winning entry. There will once again be a Memorial Book honoring victims of the Shoah remembered by the community. Forms will be distributed later this month.

Yellow candles will be available at the event for private commemoration of the Shoah.

~Geshar Calmenson



Catskill Klezmerim
in concert
Sunday, February 10,
2 - 4 p.m.

Under the direction of Robin Seletsky, Catskill Klezmerim founder and clarinetist, this six-member group of professional musicians blends traditional and contemporary styles of Eastern European Jewish folk music.

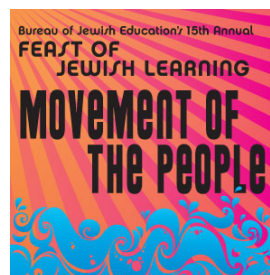
A special feature of this event is the performance of "The Golem of Prague" and "GMT Plus Two" by Brian Wilson, chair of the Music Department at Sonoma State University.

►	March 9	Chamber Music
►	April 6	The River Choir
►	May 18	Chamber Music
►	June 8	Music Matters

All concerts are Sundays from 2 to 4 p.m. at the Friedman Center. Subscription tickets are available at only \$75 for five concerts. Single concert admission \$18. For information or to place orders please call 538-1899 or email abmu@sonic.net.

Mail Orders:

Absolute Music
3051 Las Mesita Court
Santa Rosa, CA 95405



The Bureau of Jewish Education is proud to present
Movement of the People,
Sunday, March 2,
1:30 - 5:00 p.m.

The Third Annual Sonoma County BJE Feast of Jewish Learning, in partnership with the JCF and the

JCC of Sonoma County, will be held at the Finley Community Center, 2060 W. College Avenue, Santa Rosa. Free of charge. Join your friends for 16 free workshops on Jewish thought, text, culture, and spirituality. Each participant can attend two 60-minute workshops. Musical entertainment, refreshments and plenty of schmooze time. Educational children's program for children up to age 10. Bring your friends and partners: this day of education is open to everyone. RSVP with your full name to Dena Peacock at denap@jccsoco.org or call 528-4222 so that we save you a seat!

Jewish Community Contacts

Hadassah, ROSE ANN PREMI	537-9208
Hillel, DAVID RUBINSTEIN	795-5464
Jewish Community Federation	568-6207
JNF-Trees in Israel, SHEVI POSMAN	535-8805
Jewish Community Free Clinic	585-7780
DONNA WALDMAN	

Jewish Community Info & Referral 877/777-5247

JUDY MUSANTE

Jewish Community Relations Council 415/957-1551

SUZAN BERNIS

Jewish Family & Children's Services 571-8131

DIANA KLEIN

Jewish Community Center 528-4222

BETH GOODMAN

INVITATIONS
BETH AMI GIFT SHOP
 STOP BY OR CALL TO SEE ALBUMS OF
 BEAUTIFUL
 INVITATIONS
 FOR ALL OCCASIONS.



ROSALIE SCHWEIT
 527-9001
 ELAINE GOLEMB
 539-8084

Since 1956

Santa Rosa Shoes
"Quality You Can Stand On"

Specializing in Wide Widths & Large Sizes

2255 Cleveland Avenue
 Santa Rosa, CA 95403
 (707) 546-1083

MON - SAT 9-6
 THUR 9-8
 CLOSED SUNDAYS

Doctors do it



Lawyers do it



Gov't does it



Even musicians do it



Isn't it time for you to do it?

Marketing Campaigns ~ Logos & Identity ~ Websites
 All your marketing communications in one place
 Since 1996.



Web Presence
 544-9882
www.webpresenceinc.com

BROOKDALE
 LODGE AT PAULIN CREEK
Exceptional Senior Living

Studio - 3 bedroom residences
 Monthly rental includes: Three meals daily
 Weekly housekeeping ~ Scheduled transportation
 Utilities and cable TV ~ Full time activity program
 CALL TODAY TO SCHEDULE A PERSONAL TOUR
 AND COMPLIMENTARY LUNCH!

2375 Range Avenue, Santa Rosa (707) 575-3722



**Music for Your
 Special Occasions**

*Zim
 Zum*



Contact
 Rose or Jon Batzdorff
jon@sierraortho.com

זמזם
 (707) 539-7051



**BERNSTEIN
 ORTHODONTICS**
 ADVANCED ORTHODONTICS FOR CHILDREN AND ADULTS

Rael Bernstein
 D.D.S., M.S., INC.

(707) 575-0600
 515 FARMERS LANE
 SANTA ROSA, CA 95405
www.bernsteinbraces.com

(707) 836-8360
 8741 Brooks Rd. S. STE. 200
 WINDSOR, CA 95492

Wine Country Kosher
...still trendy after 3000 years



MODERN • GOURMET • KOSHER
 • International Jewish Cuisine •
 • Flavors of the Wine Country •

CATERING
 We specialize in B'nei Mitzvahs

Andrea Nett
 707/206-8686
anett1@sbcglobal.net

JFCS RIDES

A program of JFCS' Seniors • At • Home



Transportation for medical appointments,
 shopping, visiting, banking

Call (707) 571-8533

www.SAHsonoma.org
 Seniors • at • Home is a division of Jewish Family and Children's Services

My new job

Helping Melissa

Bloom.

She's arriving soon,

3½ weeks or so,

will be our new

Executive Director.

She'll need

our help, if

she's

to succeed.

We'll need

Her help, if

we are.

So,

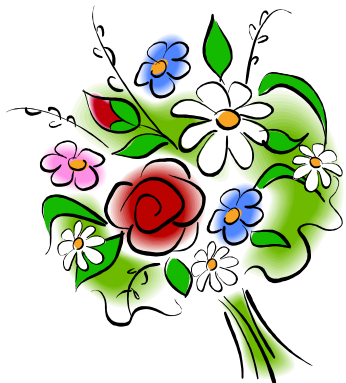
I'm signing on:

now, and here.

That's 2 new jobs:

her's and mine

What's yours?



Mark Rosen

2:10 p.m., Tuesday, December 25, 2007

The Friedman Center

has everything you need for any special event. Bar & Bat Mitzvahs, weddings, receptions, banquets, fundraisers up to 465 people.

State-of-the art audio and visual systems, perfect acoustics. Full stage with theatrical lighting, 6500 sq. ft. ballroom.

Ample parking.

Ruth Turner, Director, 360-3021

Monday - Thursday,

9 a.m. - 3 p.m.

Friday, 9 a.m. - 2 p.m.



DANIELS CHAPEL of the ROSES FUNERAL H O M E

Serving Sonoma County since 1875

Family Owned and Operated

Honoring all Jewish Traditions

Orthodox Caskets and Supplies

Tahara Service Facilities

Traditional and Memorial Services

Shipping Services to & from our area

Pre-Planning/Pre-Funding Plans Available

Telephone: 525-3730

Fax: 525-3735

**The Daniels Family: William, Patricia, Wesley,
Carol & Aimee and staff
are available for arrangements seven days aweek.
1225 Sonoma Avenue, Santa Rosa**

CA Lic.: FD-209

CA Lic.: CR-92



earth
in
upheaval
e. i. u., inc.

for the service
and repair
of fine foreign automobiles

an unusual name
with
unusual excellence

established 1970

specializing in:
MERCEDES BENZ
BMW
AUDI
VOLVO
SAAB
JAPANESE
S.U.V.s

especially qualified in:
FUEL INJECTION
DRIVEABILITY
ELECTRICAL
DIAGNOSTICS
EMMISIONS
AIR CONDITIONING

CHASSIS DYNAMOMETER

10 minutes from Santa Rosa
at

198 HIGH STREET
SEBASTOPOL, CA 95472

Open Monday - Saturday
rental cars available

Richard Kahn (707) 823-3777

Earnings Devoted to Philanthropy

SINAI MEMORIAL CHAPEL
CHEVRA KADISHA

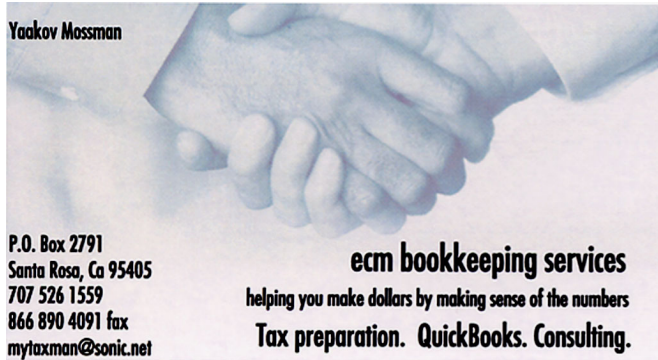
1501 Divisadero Street
San Francisco, CA 94115
(415) 921-3636
FD 262

www.sinaichapel.org

3415 Mt. Diablo Blvd.
Lafayette, CA 94549
(925) 962-3636
FD 1523

pre-need funeral arrangements available
Gene B. Kaufman, Executive Director

Yaakov Mossman



P.O. Box 2791
Santa Rosa, Ca 95405
707 526 1559
866 890 4091 fax
mytaxman@sonic.net

ecm bookkeeping services
helping you make dollars by making sense of the numbers
Tax preparation. QuickBooks. Consulting.



Jeanne L. Crump, D.O.

Osteopathic Manipulative Therapy

1211 College Ave. Telephone: 707-544-4334
Santa Rosa, CA 95404-3907 Fax: 707-544-9165

NORTH BAY BEHAVIORAL HEALTH, INC.

JOHN LEIPSIC, MD & ASSOCIATES

THE POWER OF INTEGRATED TREATMENT FOR KIDS, TEENS AND FAMILIES

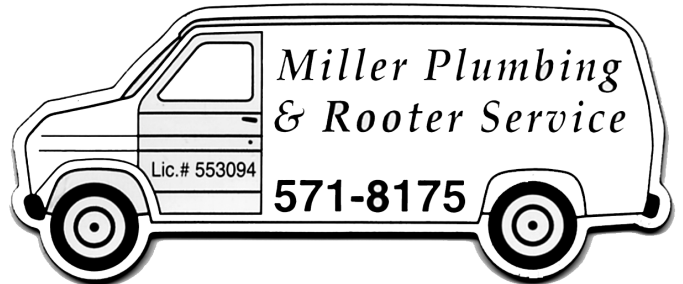
Psychiatric evaluation, medication management and
psychological testing

Psychotherapy for children, adolescents and adults



Experienced and competent clinicians

Intake Information – 542-8979
1421 Guerneville Road, Suite 114
Santa Rosa, CA 95403
www.nbbhealth.com



PARK AVENUE

CATERING

♦ FREE CONSULTATIONS

♦ PARTY PLANNING

♦ KOSHER CATERING AVAILABLE

CALL FRAN PIOTRKOWSKI

707-793-9645 ♦ FRAN@PARKAVECATER.COM



Santa Rosa Memorial Park

1900 Franklin Avenue, Santa Rosa

Every life is worth loving and remembering ~ always...

Dedicated lawns and services for Beth Ami families.

Ask us how to secure the price of cemetery property
with pre-need planning. Call today ~ **542-1580**

Santa Rosa Mortuary

Eggen & Lance Chapel

1540 Mendocino Avenue, Santa Rosa ~ **545-3747**

Honoring your traditions with orthodox caskets,
burial containers and Tahara Services.

Concerned about the cost of funeral services?

Don't be. Pre-need planning lets you control costs by
protecting today's prices. Compare and save.

COA 107 CR 171

FD 240 & 1779

Live music
by Zim Zum
& Israeli
folk
dancing
after
services!



6:00 P.M.
Dinner
(reservations
required)

7:30 P.M.
**Family
Shabbat
Services**

8:30 P.M.
**Oneg,
Music &
Dancing**

Mail/Fax/Bring
this form with
payment to:
Congregation
Beth Ami,
4676 Mayette
Avenue,
Santa Rosa, CA
95405
Phone:
360-3000
Fax: 360-3003

Congregation Beth Ami Shabbat Dinner RSVP Form

Yes, we'd love to attend Shabbat Dinner:

- ☐ Friday, March 7 –Shabbat Across America–
- ☐ Friday, April 4
- ☐ Friday, May 2
- ☐ Friday, June 6

Payment Information:

of adults _____ @ \$14 each = _____

of youth (6-12) _____ @ \$7 each = _____

~children 5 and under are free~

Amount enclosed for this event = _____

Names of all attendees:

Phone: _____

PLEASE!
***Reserve by Wednesday before
the dinner to avoid late fee!***



Congregation Beth Ami

4676 MAYETTE AVENUE, SANTA ROSA, CA 95405

Dated information.
Please do not
delay delivery.

Non-Profit Org.
U.S. Postage
PAID
Permit No. 185
Santa Rosa, CA

February schedule of services

Friday Evening, February 1
(Candle Lighting 5:15 pm)
6:00 pm Family Shabbat Dinner
7:30 pm Shabbat Evening Services

Saturday, February 2 • 26 Shevat
9:30 am Shabbat Mishpatim Services
Hosted luncheon following services
(Saturday Havdalah: 6:16 pm)

Friday Evening, February 8
(Candle Lighting: 5:23 pm)
7:30 pm Shabbat Evening Services

Saturday, February 9 • 3 Adar I
9:30 am Shabbat Terumah Services
Potluck lunch following services
(Saturday Havdalah: 6:24 pm)

Friday Evening, February 15
(Candle Lighting: 5:30 pm)
7:30 pm Shabbat Evening Services

Saturday, February 16 • 10 Adar I
9:30 am Shabbat Tetzaveh Services
10 am Tot Shabbat
Potluck lunch following services
(Saturday Havdalah: 6:31 pm)

Friday Evening, February 22
(Candle Lighting: 5:38 pm)
7:30 pm Shabbat Evening Services

Saturday February 23 • 17 Adar I
9:30 am Shabbat Ki Tissa Services
Julia Morrison, daughter of Susan Milstein and Elliot Morrison, will be called to the Torah as a Bat Mitzvah
Hosted luncheon following services
(Saturday Havdalah: 6:39 pm)

Friday Evening, February 29
(Candle Lighting: 5:45 pm)
7:30 pm Shabbat Evening Services

Saturday March 1 • 24 Adar I
9:30 am Shabbat Vayakhel Services
Eliana Haiman, daughter of Sheri and Michael Haiman, will be called to the Torah as a Bat Mitzvah
Hosted luncheon following services
(Saturday Havdalah: 6:46 pm)

If you have need of a **minyan** (e.g. to say Kaddish), please call the office a week ahead of time to arrange for a morning service.