



CONGREGATION
Beth Ami

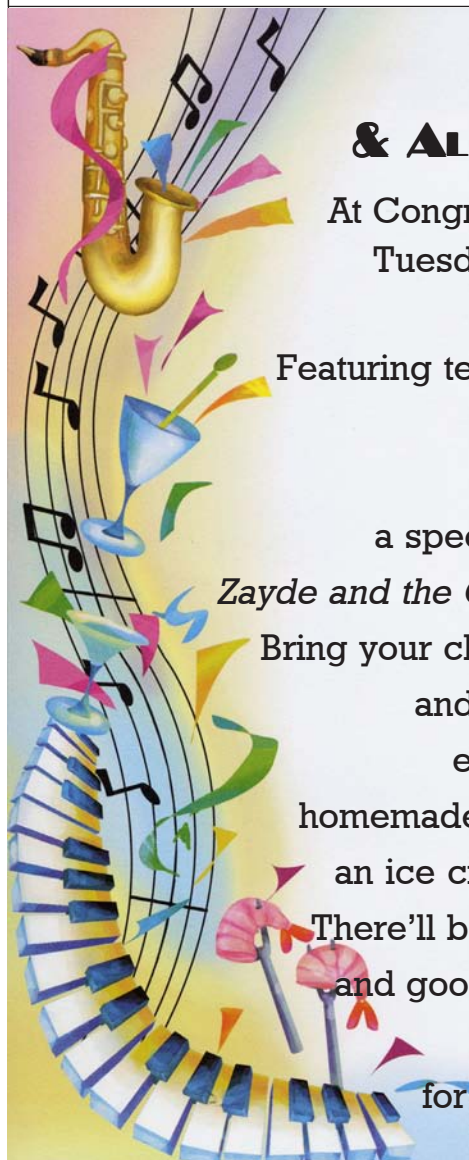
4676 MAYETTE AVENUE, SANTA ROSA, CALIFORNIA 95405

Shofar

707-360-3000

DECEMBER 2007

KISLEV/TEVET 5768



JOIN US FOR CHANUKAH & ALL THAT JAZZ!

At Congregation Beth Ami
Tuesday, December 4th
6 - 8 p.m.

Featuring teen jazz sensation
In Black.

And for the kids,
a special puppet show,
Zayde and the Chanukah Latkes.

Bring your chanukah menorah
and two candles and
enjoy a a dinner of
homemade latkes, salads &
an ice cream sundae bar.

There'll be dreidels to spin
and good friends to meet.

A Chanukah
for the whole family!

*~Enchanting world-Jewish
melodies with Israeli soul~*

Scholar-in- Residence Ahuva Batz December 7-9



Please welcome Ahuva
Batz for a weekend of learning, poetry, music and Shab-
bat joy. It is a Chanukah gift to have her here with us.

After our monthly Shabbat dinner Ahuva will share
her music and storytelling for Chanukah at the 7:30 p.m.
service on Friday, December 7.

She will lead the Torah service, Hallel and the
Musaf service on Saturday, December 8, beginning at
9:30 a.m.

Ahuva will join the Religious School students on
Sunday, December 9 and share her ruach for the
holiday festivities.

Ahuva's passion for Talmud, Torah and Tefilla
(prayer) has blossomed into her work as a teacher and
ritual leader. She teaches cantillation and B'nai
Mitzvah lessons, leads prayer and chants megillot at
Tal Torah, a growing women's Jewish studies center,
and is a frequent prayer leader at Moreshet Yisrael,
Jerusalem's flagship Conservative synagogue.

***The RSVP form for the Chanukah party
and the Shabbat Dinner are on page 19.***

IN THIS ISSUE

President's Page	page 3
Religious Practices: Attitude	page 3
Events & Announcements	page 4
December Calendar	page 5
Events & Announcements	page 6
Nursery School Thank Yous	page 7
Israel from the Left Coast	page 8
Literary Lines	page 8
Mitzvah Moments	page 9

Teen Time	page 9
Generous Contributions	page 10
Or Ami Tzedakah Project	page 11
Grab Bag	page 12
Yahrzeits, Anniversaries & Birthdays	page 13
Jewish Community Events	page 14-15
Advertisements	pages 16-18
Event RSVP Form	page 19
December Services	back page

CONGREGATION BETH AMI

4676 MAYETTE AVENUE, SANTA ROSA, CA 95405

(707) 360-3000

(707) 360-3003 FAX

OFFICE@BETHAMISR.ORG

WWW.BETHAMISR.ORG

RABBI GEORGE SCHLESINGER

PERSONNEL

Rabbi

George Schlesinger

360-3004

rabbi@bethamISR.org

Yaakov Mossman,

Bookkeeper

360-3011

bookkeeper@bethamISR.org

Elizabeth Jarlsberg,

Administrative Support

360-3000

office@bethamISR.org

Karen Gould, Newsletter

360-3000

newsletter@bethamISR.org

Elisabeth Van Nuys,

Religious School Director

360-3000

rs@bethamISR.org

Jean Rudy

Nursery School Director

360-3030

ns@bethamISR.org

Ruth Turner,

Friedman Center Director

360-3021

ruth@friedmaneventcenter.com

Susy Raful & Helen

Margolese, Gift Shop

360-3022

Rick Concoff

Chaverim Program

Director

823-3916

concoff@sbcglobal.net

Sharon Benson

703-4244

USY Advisor

Sharon@scusynf.com

Chaverim Event Director

sbenson@pacbell.com

Call the office at

360-3000 to leave

a message for:

•Rosalie Schweit,

Gift Shop Invitations

•Patty Bernstein,

Torah/Haftarah Reading

OFFICERS

AND BOARD OF

DIRECTORS

2007-2008

President, Andy Fleming

andyflem@gmail.com

Treasurer, Henry Cohn

henry_s_cohn@yahoo.com

VP for Administration,

Al Batzdorff

abat@sonic.net

VP for Youth and

Education, Dave Ballo

david_ballo@agilent.com

Library Committee Chair,

Susanne Batzdorff

sbatz@sonic.net

Religious Practices

Committee Chair,

Patty Bernstein

basberyl@sonic.net

Members at Large

Bonnie Boren

Richard Kahn

Richard Lazovick

Martha Mazur-Lane

Susan Miller

Mark Rosen

Birgit Sacher

Members Ex Officio

Rabbi George Schlesinger

Marcia Gladstone

Nicole Burke,

Nursery School Liaison



HOURS OF OPERATION

Beth Ami Main Office

Monday - Friday: 10 a.m. - 4 p.m.

Library

Tuesday & Thursday:

3:45 - 6 p.m.

Sunday:

9:30 - 10:45 a.m.

Gift Shop

Tuesday & Thursday:

3 - 5 p.m.

Sunday:

10 a.m. - 12:30 p.m.

when RS is in session

Extended Gift Shop Chanukah hours are on page 12.

Congregation Beth Ami Mission Statement

Through celebration, learning, prayer and community, we seek to enrich our lives, transform our hearts, help heal the world and sustain our Jewish heritage.

Congregation Beth Ami Vision

A vibrant, growing campus for Jewish living where the joys of Jewish values and rituals are made accessible and relevant to the everyday lives of our members.

A flourishing, prospering congregation enjoying the wholehearted support, commitment and involvement of all our members.

DEADLINE FOR

JANUARY SHOFAR

FRIDAY, DECEMBER 14

All editorial submissions must be received in the *Shofar* box in the Beth Ami office or via email on or before the deadline.

All submissions are subject to editing for clarity, brevity and content. Please submit articles as Microsoft Word documents via email attachments. Contact Karen Gould, Editor, at 360-3000 or at gouldk@sbcglobal.net with corrections, concerns or questions.

The *Shofar* is a periodical issued monthly except for a combined May/June/July issue. It is published by Congregation Beth Ami, 4676 Mayette Avenue, Santa Rosa, CA 95405. All members in good standing receive the periodical free. Yearly subscriptions are \$25.00.

This month's issue is:

Volume 13

Issue 4

Issue Date: December 1, 2007



PRESIDENT'S PAGE

Andy Fleming

Tale of a transition

The past six months have been a time of intense activity at Beth Ami, including a major physical renovation, a High Holiday season that came early, and lots of programming throughout the synagogue. It was also six months ago that our Executive Director, Juli Scherer, departed. The question of who is running this place may sometimes occur to you. I want to give credit to those people who are managing our organization, and also to describe the interesting challenge of finding a new director.

Since early June, a four-person team of volunteers has split up the tasks of a director, and worked together under the title of the Transition Team. This title optimistically suggests that we are smoothly moving from one phase to another. The team consists of Karen Gould, Robin Winning, Al Batzdorff, and myself. In a very general delegation of duties, Karen has handled communications with our membership; Robin is helping the office with vendor relations and is managing the hiring processes that have been initiated; Al oversees staff and office administration; and I am a nursemaid for the renovation activities. Speaking for all of us, I believe that we have learned an enormous amount about the requirements for managing the activities of the synagogue. Often, we have learned this by making mistakes. And we have gained an appreciation for how varied and challenging is the job of Executive Director.

A couple of months ago, we began the search for a new director. We were pleasantly surprised to hear from over 20 applicants. At least half of these people have skills and experience that appear to be a good fit for our job. We have recently narrowed our pool of candidates down to three people. Each of them brings a level of competence, vision, and enthusiasm that gives me confidence that we will make a good choice no matter which candidate we select.

The ultimate selection is really less a matter of picking the most capable or skilled candidate, than it is the matching of our vision for Beth Ami with the individual who we see as most likely to implement our plans and hopes. As I have asked many times in my presidency: What is our dream for Beth Ami? What is the balance that we seek between our history and established culture, and the changes necessary for growth? How should we present ourselves to people seeking affiliation? How do we assure the diversity that insures growth and vitality?

Excellent candidates have come to us, presenting us with a choice. They are all capable, but very different from one another. They have done their part. Now it is up to us, your leadership, to make the choice that resonates with the Beth Ami that we wish to create. We definitely are in the middle of transition now. The examination of potential directors has given us a sharply focused opportunity to define where our transition will end up.

RELIGIOUS PRACTICES

Patty Bernstein

Some of my best friends ...

There have been a number of studies about longevity and keeping one's marbles (and I don't mean in a cigar box) which point to the importance of community and regularly being involved in social and spiritual activities. But I think there's something else that adds quality and resiliency to lives—and that's *attitude*. Not the kind that some huffy people—both children and adults—snap off, but the way some people look at life and what's dealt them ... and then *deal with it!*

I recently came upon a wonderful little story that illustrates this point. Please, enjoy it ... then look around you in your mind's eye and see reflections of all those amazing people you know who have *attitude*. Are you among them?

Some of my best friends have *attitude*! Bless you all.

Attitude (author unknown)

There once was a woman who woke up one morning, looked in the mirror, and noticed she had only three hairs on her head.

"Well," she said, "I think I'll braid my hair today."
So she did and she had a wonderful day.

The next day she woke up, looked in the mirror, and saw that she had only two hairs on her head.

"Hmmm," she said, "I think I'll part my hair down the middle today."
So she did and she had a grand day.

The next day she woke up, looked in the mirror, and noticed that she had only one hair on her head.

"Well," she said, "today I'm going to wear my hair in a pony tail."
So she did and she had a fun, fun day.

The next day she woke up, looked in the mirror and noticed that there wasn't a single hair on her head.

"YEA!" she exclaimed, "I don't have to fix my hair today!"

Stay active and involved at Beth Ami, come to services, and do a mitzvah. You'll love what it does to your *attitude*!



EVENTS & ANNOUNCEMENTS

Ongoing programs at Beth Ami

♦ **IT'S BACK! THE FRIENDSHIP CIRCLE EXERCISE CLASS** meets Wednesday and Fridays in the Beth Ami Social Hall from 10:15 - 11:30 a.m.

TUESDAY

♦ **Torah study with Rabbi Schlesinger** every 2nd & 4th Tuesday at 10 a.m. in the Friedman Center Board Room.

♦ Israeli Folk Dancing

7 p.m., Friedman Center. For more info contact Leanne Schy at 528-4874 or Leanne@sonic.net.

THURSDAY

♦ **Torah & Talmud Study with Rabbi Schlesinger,** 7 p.m., Friedman Center Board Room.

Torah December 6, 20

Talmud December 13

FRIDAY

♦ **Shabbat Yoga,** 4:30-5:30 p.m., Lounge, 1st Friday each month (resumes January 2008). Call Hannah Caratti at 578-4040 for more information.

SUNDAY

♦ 11 a.m. - 12 p.m. Adult B'nai Mitzvah Class - ongoing. Please call Rabbi Schlesinger, 360-3004 if you're interested in joining.

Sincere condolences from the Beth Ami community to Yona & Eli Miller and their family on the death of Eli's mother, Malka Wachsberg.

Book Discussion Group

We meet on the first Wednesday of each month from 10 – 11:30 a.m. at Congregation Beth Ami. If you would like to join our group, we can always make room for a few more. For information call Susanne Batzdorff at 538-9731.

Dec. 5, 2007: Agosin, Marjorie:

The House of Memory: Stories by Jewish Women Writers of Latin American.

Jan. 2, 2008: Idliby, Ranya, Oliver, Suzanne, and Warner, Priscilla:

The Faith Club.

Feb. 6, 2008 Chabon, Michael:

The Yiddish Policemen's Union.

March 5, 2008: Nassib, Sélim:

The Palestinian Lover.

April 2, 2008: Oz, Amos:

Panther in the Basement.

May 7, 2008: Dean, Debra:

The Madonnas of Leningrad

June 4, 2008: Nemirovsky, Irene:

Suite Francaise.

July 2, 2008: Oufkir, Malika:

Freedom: The Story of My Second Life.



Rosh Chodesh Women's Brunch

Rosh Chodesh Tevet, December 9th!

On the 5th Day of Chanukah ... come join the Rosh Chodesh Moon Mavens as we kindle five lights in our chanukiah, talk a little Chanukah, enjoy a potluck brunch, and welcome the new month of Tevet. We'll meet at 11am in the Friedman Center Chapel.

What shall you bring? A potluck-brunchy item to share, a chanukiah, 6 candles, your own sweet self. We hope to see you there!

Questions? Please contact Patty Bernstein, 546-6043 or basberyl@sonic.net.





Len Lyons at Beth Ami

We at Beth Ami were graced on the evening of November 14 by the presence of Len Lyons, who spoke to us of the Ethiopian Jews of Israel—their history; the difficulties they have faced upon coming from a pre-industrialized, agrarian, uneducated society to one that is highly technological, sophisticated and educated; and the slow but steady gains they are making in integrating themselves into the diverse Israeli society.

Len is a fabulous speaker, combining a depth and breadth of knowledge with a calm, easygoing, articulate manner of speaking that transfixed the audience of 55. He accompanied his talk with beautiful slides and interview clips of some of the Ethiopian Israelis with whom he has met. His love for and appreciation for the “Falasha”—whom he referred to as some of the most loving and optimistic people he has ever known—was inspiring. After Len finished his presentation, he entertained some of the many questions people wanted to ask him. As it was getting late, we had to stop before everyone had the opportunity to ask their question, but the subsequent rush to the book table to both purchase Len’s book and chat with him for a few minutes provided a special intimacy.

One particular thing that made the event with Len so memorable is the fact that he has been a close friend of members Lyla and Asher Nathan for years, and it was thanks to a tip from Lyla that we first learned about Len’s book and presentation. Having a beaming, enthusiastic Lyla and Asher in the audience lent the night a special excitement.

~Nancy Fleming

Correction

Although Ira Rosenberg might have been pleasantly surprised by last month’s Shofar article, to be credited with having participated with the Mitzvah Milers in completing the 75-mile Waves to Wine MS fundraising bike ride on September 30, Ira Lowenthal was, no doubt, disappointed to find his name left off the list of the six Beth Ami riders. Actually, I invented a new person, as I came up with “Ira Rosenthal” ! My apologies to both gentlemen!

~Nancy Fleming

CBA eScrip participation is growing!



Since the beginning of September we have added 12 new eScrip supporters.

And we are seeing our monthly net contribution rise. From August to September this contribution increased 99%! Through September, our 2007 net contribution to CBA was **\$872.27**. Join us in this very easy & effective fundraiser.

How do I sign up?

◆ Log on to www.eScrip.com and go to “sign up”

◆ Designate Congregation Beth Ami in Santa Rosa, ID #136921119 to receive contributions

◆ Register your Safeway club card, Macy’s card, other credit or debit cards that you might use at the participating merchants

◆ NOTE: If you have misplaced your Safeway Club card number (and put in your phone number when shopping to get the discount), call the Safeway Club card customer service center at 877-723-3929. The hours are M-F 6:00am-9:00pm PST, Sa/Su 6:00am-5:00pm PST. Choose “0” on the menu and tell the agent you need your Club card number. All they need is your phone number to retrieve it.

◆ If you’d rather sign up by phone, call eScrip at 800-700-5655 M-F 7:00am-5:00pm PST. A customer service agent will assist you. Just have all of your card numbers handy. If you are only signing up your Safeway card, call 800-400-7878.

◆ If you think you might already be an eScrip supporter, please check the status of your account on the website. We have many old accounts that are no longer generating contributions and may need updating. Also if you already participate in eScrip at your local school, consider splitting your contribution with CBA, which you can do on the website.

◆ If you need any assistance in your sign-up process or have any questions, please do not hesitate to contact Nancy Sherman at 538-9388 or enshermn@pacbell.net.

~Nancy Sherman



Call for talent! Purim is coming!

It is never too early to start warming up your chops, and getting those surfboards out in preparation for the Beach Boys Megillah! If you have ever dreamed of being a surfer girl, hanging ten with Mordecai, or being True to your Shul, then this is your chance! Talent is desirable, but as history demonstrates, is not required.

If you want to be a part of the Beach Boys Megillah production in March, please call Karen Gould in the office and sign up. You may want to be an actor, a technician, a caterer, a production assistant, or a costumer! If you have that itch for show business, let Karen know.

Casting and organizing the spectacle will begin in December.

~Andy Fleming

**THE NURSERY SCHOOL
FUNDRAISER ON SUNDAY,
NOVEMBER 11 WAS A
WONDERFUL SUCCESS
THANKS TO
ALL THOSE WHO
DONATED, ATTENDED,
SHOPPED, SPONSORED,
AND VOLUNTEERED.**

EVENT SPONSORS

Friedman Center
Rodney Strong Vineyards
(Mary Hortin and Greg
Morthole)
Village Market

EVENT COMMITTEE

Cherlyn Jeffers
Pam Loman
Corinna Kirk
Lynne Richichi
Lisa Freedman
Nicole Burke
Kathy Uemura
Dana Plikuhn
Jessica Wichmann
Jane Paul
Mary Hortin
Kiyo Tuckman
Jana Roche
Diana Majumdar
Cheryl Willett
Guevara Rowand

DONORS

6th Street Playhouse
Arbonne International
Amaturo, Susan & Lawrence
B.R. Cohn Winery
Barbose, Debby
Barefoot Books
Bay Area Discovery Museum
Brumbaugh, Michael &
Richardson, Jennifer
Belladonna Salon
Benvenuti, Valerie
Bernstein Orthodontics
Blanc, Michelle
Boren, Bonnie
Brosbe, Ellen & Herb

Burke's Canoe Trips
California State RR Museum
Calvert, Caroline
Carmen's Burger Bar
Charles M. Schulz Museum
and Research Center
Chateau St. Jean
Cho, Gregory
Cokas Diko
Congregation Beth Ami &
Or Ami Religious School
Copperfields Books
Costco
Darby, Audrey
Di Rosa Preserve
Doce Lunas Restaurant
Doig, Kathy & Scott
Dresser, Helen
Drexel Heritage by Pedersen's
Earth in Upheaval
East West Café
Edible Arrangements
Eichbaum, Eldan & Rosy
Elwell's Taekwando
Epstein, R. Mark
Fireside Stationary
Fisher-Tachouet, Robyn
Flavor Bistro
Flowmaster, Inc.
Funky Monkey
Gary Chu's and Osake
Genolio, Sally & Thomas
Goldberg, Jill & Rick
Goodman, Andrea
Graf, Max
Great Sunsatation
Gurevitch, Evelyn & Leo
Gurevitch, Russ
Harvey Henningsen
Photography
High Tech Burrito
Hilton Sonoma Wine Country
I Love NYPie
Infineon Raceway
Jewish Family and Children's
Services
Jo Jo Sushi
Jones, Marlene & Maurice
Katreina Eden Estate Planning
Kenwood Vineyards
Kids on the Move
Kings Nursery
Kirin Restaurant
Korbel Champagne Cellars
La Vera Pizza
Lawrence Hall of Science
Levee, Tish
Leuzinger, Robert
Lindsay Wildlife Museum
Lucasfilm, Ltd.
Macken, Karen & James
Majumdar, Diana
Mary's Pizza Shack
Massage for Health
Matanzas Creek Winery
McGee, Barb
Miller, Susan
Mom & Baby Sport
Montecito Heights Health and
Raquet Club
Montessori Services
Muffin St. Baking Co.
My Gym
Newcomb, B Leena
Photography
Newman, Edith
Oakland A's Community Fund
Occidental Arts and Ecology
Olive Garden
Omelette Express
Osmosis
Pachynski, Helen
Pacific Theaters
Paule, Raynore & Vern
Pearson & Co.
Pigtails and Crewcuts
Pleasant, Blair & Dan
Polk, Tim Communications
Positively Fourth Street
Powell's Sweet Shoppe
Pump It Up
Red Lobster
Redwood Family Dermatology
Reverie Baby
Rialto Cinemas Lakeside
Rileystreet
River Rock Casino
Ripley's Believe it or Not
Riviera Ristorante
Roche, Jana
Rodney Strong Vineyards
Rohnert Park Gymnastics
Rosen, Mark
Roshambo
Round Table Pizza
SF Museum of Modern Art
Santa Rosa Gymnastics &
Cheer
Santa Rosa Parks and Rec
Santat, Dan
Scandia Fun Center
Schy, Ethel & Stuart
Sebastopol Massage Center
See's Candy
Shapiro, Debbie & Tad
Skoonberg, Bill
Snoopy's Home Ice
St. Francis Winery
SOAR Inflatables/Russian
River Adventures
Sonoma County Chabad
Sonoma County

Regional Parks
Sonoma Sparkler
Sotelo, Leticia
Sparkle
Sparrow, Miriam & Roy
Spreckels Performing
Arts Center
Style 'n' Comfort Limo
Sugarman Family
Sweet Factory
Tager, Jill
Tappe, William and
Collins, Helen
Target
The Girl and the Fig
The Sensuality Shoppe
Toad Hollow Vineyards
Tone Pilates
ToyWorks
Traverso's Gourmet Food
Valley of the Moon Winery
Varco, Anne
Vertex Climbing Center
Vine Rover Tours
Wagner Carpets
Watson, Ellen
Wax Museum of San Francisco
Wells Fargo Center
for the Arts
World Famous
Hamburger Ranch
Zeitgeist, Jessica & Efraim
Wichmann
Zimmer, Julia & Laurence

•The Nursery School Staff:
Jean Rudy, Director; Debby
Barbose, Michelle Blanc,
Caroline Calvert, Sara Chavez,
Robyn Fisher-Tachouet,
Louise Joost, Lauren
Kalmanson, Jill Tager, Anne
Varco, Connie Williams,
Barbara Whitaker
•Dawna McKenna, for
coordinating the classroom
quilt project
•Nicole Burke, Matt Kirk and
photographer Kelley Johnson
for coordinating the children's
photography project
•Nicole Burke for coordinating
the teachers' 1980s pictures
raffle
•Massage: Chair Heaven
Corporate Massage
•DJ: Planet Entertainment
•Catering: Village Market and
Whisked Away
•All of the wonderful
volunteers for the event
•Karen Gould, program



ISRAEL FROM THE LEFT COAST Bob Raful

Looking at Israel from Santa Rosa, after returning in mid-October, one can get discouraged: conflicted leadership under attack, a long, long teachers strike and the military/political arena in turmoil. I was gratified therefore, to find an upbeat reminder from an unexpected source – Pat Boone. The well-known singer, actor and motivational speaker posted a first person report on something called *worldnetdaily.com*. Here are excerpts:

“...I’ve written here before about the innumerable contributions Israelis have made to the world, in virtually every category – literature, chemistry, medicine, physics, economics, every science and technology, Internet and communication, and efforts for world peace. The list of achievements and astounding contributions is endless.

And the pace has greatly quickened in the last several decades. Consider: Israel is the 100th-smallest country, with less than 1/1000th of the world’s population – but its \$100 billion economy is larger than all of its immediate neighbors combined.

Look further: Israel has the highest ratio of university degrees to its population in the world; she produces more scientific papers per capita than any other nation by a large margin – 109 per 1,000 people – as well as one of the highest per capita rates of patents filed. With more than 3,000 high tech companies and startups, Israel has the highest concentration of high-tech companies in the world – apart from the Silicon Valley.

How does this matter to you and me, and every other citizen in the world of the 21st century? Most of Windows NT and XP operating systems were developed by Microsoft-Israel. The Pentium MMX chip technology was designed in Israel at Intel, and both the Pentium-4 microprocessor and the Centrino processor were entirely designed, developed, and produced in Israel. Voice-mail technology and AOL’s Instant Messenger were developed by young Israelis.

Medical technologies, diagnostics, pharmaceuticals and treatments that offer healing in almost every area of disease and disability are just too many to list here. Israel’s Given-Imaging has developed the first ingestible video camera, so small it fits inside a pill; it’s used to view the small intestine from the inside, to detect cancer and digestive disorders. And other Israeli researchers have developed a new device that directly helps the heart pump blood – an innovation with the potential to save lives among those with heart failure.

An Israeli company was the first to develop and install a large-scale, fully functional solar electricity generating plant, in southern California’s Mojave Desert. What does that portend for an energy-guzzling, oil-stained world?

In this game we play on earth, called life, though many players have contributed great things, the MVP – the Most Valuable Player – has been clearly revealed. It is Israel!”



LITERARY LINES Susanne Batzdorff

**November 16 to December 16
is Jewish Book Month!
Celebrate with us!
Discover the pleasure of reading!**

How fitting that our Jewish Book Group, now in its 25th year of existence, is featured in the current issue of Jewish Book World, Fall 5767/2007 with a picture of the 11 members who happened to be in attendance. The article is titled “Twenty-five years and thriving,” by Sara L. Spinell.

Many book groups come and go, but few survive for as long as ours has done. The writer speculates: Perhaps the key to success is to avoid, as the Santa Rosa group does, discussing books over a meal.

Perhaps you would like to know what some of our favorite books have been over the years. Here is a partial list:

Glueckel von Hameln	<i>Memoirs</i>
David Daiches	<i>Two Worlds</i>
Stephen Dubner	<i>Turbulent Souls</i>
Eva Hoffman	<i>Lost in Translation</i>
Martin Goldsmith	<i>The Inextinguishable</i>
	<i>Symphony</i>
Julius Lester	<i>Lovesong</i>
Chaim Grade	<i>My mother’s Sabbath Days</i>
Ursula Hegi	<i>Stones From the River</i>
Adam Hochschild	<i>King Leopold’s Ghost</i>
Lis Harris	<i>Holy Days</i>

Check us out!
Find your favorites on our
library shelves!

Library Hours
Sunday: 9:30-10:45 a.m.
Tuesday and Thursday:
3:45-6 p.m.
And by appointment.
**Call Ruth Rosenberg
at 544-2919 for an
appointment.**





MITZVAH MOMENTS

Tish Levee

The month of Kislev is an especially good time to practice the mitzvot of Tzedakah and G'milut Chasadim—Deeds of Loving Kindness.

Here are a few ideas:

- **The Redwood Empire Food Bank** is in the midst of their Holiday Food Drive, which runs till January 31. This year their goal is to collect 200,000 lbs. of food. In conjunction with the Religious School's 5th grade's year-long mitzvah project of Ma'achil R'evim—feeding the hungry, there are two barrels in classrooms 12/13—the “lounge.” In addition there will another one in the Social Hall near the Multi-purpose Room in December and January. Please be generous. The Food Bank serves 50,000 low income families in Sonoma County every month. They also need help, call Jim Roessler at 523-7900, ext. 23 to volunteer.

- **The Living Room**, a daytime drop-in shelter for homeless women and children, has a wish list of gift items needed for their annual Holiday Party at thelivingroomsc.org. There will be a copy of the list on a donation box next to the Food Bank barrel in the Social Hall. Gifts are needed by December 14. Of course, wrapping papers, scotch tape, ribbons, bows, etc. are also needed, as are volunteers to help with the party and during the week of December 17. Call the Volunteer Coordinator at 579-0142 for details.

- When you're shopping for holiday gifts, consider **thehungersite.com**. They have a wonderful selection of goods, many of them fairly traded. Right now, when you place an order, a family of four will receive a meal from America's 2nd Harvest—the nation's food bank network. Shipping is only \$2.95 per order—free if you order one of their many Gifts that Give More at the same time.

P'kuach Nefesh—Saving a Life

Give the gift of life for Chanukah! **Give blood on Wednesday, December 5, from 12-3p.m. at Beth Ami**—the Blood Bank of the Redwoods' bloodmobile will be in the synagogue parking lot. If you can't come then, call the Blood Bank at 544-1222 for their hours. Men—you are especially needed: the Blood Bank no longer uses plasma from women donors due to the slight possibility of a transfusion-related lung injury, believed to be related to antibodies that form in a woman's blood when she is pregnant.

Tikkun Olam—Saving the World

The UN panel on global climate change, which shared the Nobel Peace Prize with Al Gore, released its report on November 17, stating that climate change is “severe and so sweeping that only urgent, global action” can head it off. While action is going to be needed at all levels of government, it will also take each of us making changes in how we live on the planet. Check out liveearth.org or go to pge.com and check on ClimateSmart for things you can do to help. Look for more ideas in future Mitzvah Moments.

If you have ideas for this column or questions, please email me: ivrit@sonic.net or call me, 526-9864.

CHAVERIM

Sharon Benson, Youth Advisor



B-I-N-G-O!

Mark your calendars for CHAVERIM'S annual BINGO NIGHT on Saturday, January 26, 2008 at Congregation

Shomrei Torah. Dinner will be at 5:30 and Bingo at 6:15 p.m.

There'll be food, drinks, prizes and of course, BINGO! This is a great event fun for all ages (bring your Bubbe along – she'll have a blast!).

Chaverim seeks donation of prizes for the event. For more information, contact Chaverim Events Director Sharon Benson at 703-4244 or sbenson@pacbell.net.

Sharon Benson
SCUSY Youth Advisor
sharon@scusynf.com

and
Chaverim Events Director
sbenson@pacbell.net
703-4244

YOUR USY

Haley Pleasant, USY Co-President

Fall Kinnus fun

Sonoma County USY recently returned from Fall Kinnus, the annual regional convention in November. The theme of the convention was “Your Jewish Body is a Wonderland.” The convention consisted of daily prayers, a rabbi program about the body, an Israeli song writing session, and more. One of the main events of the weekend was the New Frontier region's talent show. USYers from every chapter in New Frontier entered the show with a variety of acts – from reciting poetry to hip-hop dancing. Ethan Sherman, our SCUSY executive programming Vice President and representative in the talent show, played an original song on his guitar. Ethan played the song in a unique way that caught the audience's attention. With his guitar on his lap, he played the song using a technique called “tapping,” in which he tapped the strings instead of strumming them. Ethan's amazing performance won the audience over, and he received first place in the show. He will be representing SCUSY and New Frontier at the USY International Convention 2007 in Anaheim. Congratulations and good luck, Ethan!



GENEROUS CONTRIBUTIONS TO OUR CONGREGATION

The next time you are looking for a meaningful way to celebrate a joyous occasion, remember a loved one, or comfort a mourner, please consider a donation to Congregation Beth Ami.

When you make a gift, a card is sent to the honoree or the family and your donation is proudly acknowledged in the *Shofar*.

The minimum donation for each occasion is \$7.50. Congregation Beth Ami truly appreciates your support.

CJEEF

In memory of Max Malk
In memory of Mayer Wegman
In memory of Mark Perlman
In memory of Aaron Friedman

Mark Rosen

In honor of the new home of Len & Elly Cohen

Sylvia Sucher

GENERAL FUND

A generous donation
Lindsay Kvam
A thoughtful donation
Betty Boyd & Eli Cohen
In honor of Helen Dresser becoming a great-grandmother
Edith Newman
In memory of Irving Judd
Lillian Judd
In honor of Rosalie Schweit's birthday
Celia Berman
A generous donation
Darrell Watkins

In memory of my beloved husband, Max Sucher
Sylvia Sucher
In memory of Florence Goodman

Andy Goodman

In memory of Eli Miller's mother, Malka Wachsberg
In memory of John & Rhonda Rosenbach's brother-in-law, Eddie Phillippborn

Phil Weil &

Bonnie Boren

In memory of Eli Miller's mother, Malka Wachsberg
Michael & Lauren Newman

Congratulations to Lindsay Kvam & Paul on their engagement

Edith Newman

In memory of Martin Goldberg

Jackie Katzel

In honor of Leo Gurevitch's birthday

Tish Levee

MALK FUND

In honor of the Gerstein's 65th anniversary - Mazel Tov and all the best!
In honor of Phyllis & Everett Shapiro's anniversary

Greta Winter

In honor of the Gerstein's anniversary - much love, Phyllis & Everett

Phyllis & Everett Shapiro

Happy anniversary to Phyllis & Everett Shapiro

Edith Newman

In honor of Phyllis & Everett Shapiro's anniversary

Rosalie & Lester Schweit

RABBI'S DISCRETIONARY FUND

In memory of Brucha Vilenskaya
Malvina Tsipan
A generous donation
The Rosenbach Family
In memory of my husband, Lev Bakman
Sheyna Bakman
In honor of Rabbi Schlesinger's birthday
Tish Levee
In memory of my father, Hyman Katsman
Zoya Katsman
In memory of my beloved Lou
Evey Abramowitz

RELIGIOUS SCHOOL FUND

In memory of my mother, Sydney L. Paul
Jane Paul
In memory of my mother and father
Bernice Fox
A generous donation
Darrell Watkins

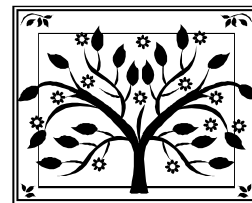
Simcha Board • Tree of Life

We gratefully acknowledge the newest leaves on our tree:



In honor of the 60th Anniversary of
Rosalie & Lester Schweit
August 24, 2007

With all our love, Barbara, Gary, Lindsay,
Devon & Tobin Greensweig



Honor thy mother...also thy aunt, uncle, cousin, child, best friend, teacher with an engraved leaf on our Simcha Board commemorating any joyous occasion, bestowal of an honor, or cause for thanksgiving.

• Leaf \$360 • Small Stones \$1000 •

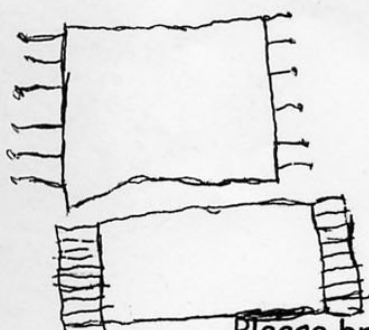
• Large Stones \$2500 •

We also provide the opportunity for you to memorialize loved ones on our Yahrzeit Board.

A plaque is \$450.

Dear Congregational Families and Friends,

We, the 3/4 grade class, are working on a tzadakah project to help those who are less fortunate. Please help us donate to the Transitional Housing Project. This organization helps people who were homeless: get jobs, have access to phones, healthy food, help them have consistent shelter, and get a hold of their life to make positive changes. Our collection starts now, and ends the end of May, 2008. We are collecting (all gently used):



sheets, blankets, & towels,
children's (age 0-13) shoes, clothing,
toys, posters, videos, and CD's,
children & adult books,



Please bring your donations to room 14, or the Religious School Office. Please donate these things for those families who need them, so that they can make their lives better.



Sincerely,
The 3/4 grade class



***A note of thanks from Leslie and Michael,
parents of Aaron Markowitz—***

As Thanksgiving in the U.S. is here, we acknowledge all those who have thought of Aaron and encouraged him and us to focus on "HEALTH". Aaron has passed with flying colors the phase after removal of malignant medulloblastoma brain tumor, rehab, radiation and chemo. We are grateful for the invisible veil of strength and equanimity that wrapped our whole family during this time, and served us well. All the blessings that have been present in many forms and through so many people who have loved Aaron from afar have been magical. We continue to hold on to continued strength and joy for Aaron as he and we go through the next leg of the journey. We are grateful for our lives, our family, our amazing children, Aaron's huge spirit, and his loving global community which you are a part of. May you be blessed in many ways for the kindness you have bestowed upon Aaron and our family.

~Leslie and Michael

Markowitz

Visit our community site: [http://](http://www.lotsahelpinghands.com/c/600172/)

www.lotsahelpinghands.com/c/600172/



PanimWorks: An Activist's Adventure

Session 1: June 29-July 10, 2008

Session 2: July 27-August 7, 2008

www.panimworks.org

Live and work in an entirely new culture this summer!

Make a difference as you live in rustic accommodations on a Native-American reservation, interacting with members of the Navajo Nation while working together to promote positive change. This trip in the majestic Southwest includes hands-on service projects as well as outdoor recreational activities. Make lifelong friends and learn about the ethical values that define Jewish life while earning up to 45 community service-learning hours. PanimWorks is open to rising high school sophomores, juniors, seniors and graduating seniors.

Contact: Rachel Hillman 301/770-5070, ext. 217 or

PanimWorks@panim.org

Summer JAM (Judaism, Activism, Mitzvah Work)

www.dccjam.org

Come to Washington DC and participate in a one-of-a-kind program on the campus of the George Washington University. Become a leader in the political world and the Jewish community today! Learn about key issues impacting the U.S. and the world through interactions with leading U.S. policymakers and experts, while exploring the connection between Judaism and advocacy. Participate in meaningful hands-on service projects, while earning up to 75 community service-learning hours. Develop the skills to pioneer change and impact the issues you care about.

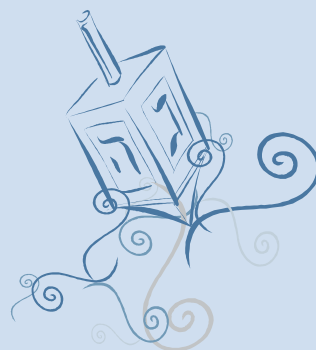
Summer JAM is open to rising high school juniors, rising seniors and graduating seniors.

Contact: Lani Hart 301/770-5070, ext. 223 or SummerJAM@panim.org

CONGREGATION BETH AMI JUDAICA GIFT SHOP

Everything's coming up gimel at the Beth Ami Gift Shop.

You WIN! And so does Beth Ami when you do your Chanukah shopping at our gift shop.



Beautiful JEWELRY

Ahava Skin Care and Cosmetics

Artful MENORAHS

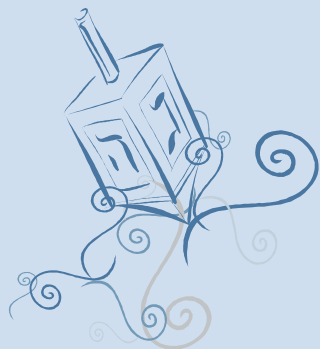
Festive DECORATIONS

Kosher Chocolate CANDY

Spinning DREIDELS

Colorful WRAPPING PAPER

Engaging BOOKS



EXTENDED HOURS

November 26 - December 6

Mondays & Wednesdays: 10 a.m. - noon

Tuesdays & Thursdays: 3-5 p.m.

Sundays: 10 a.m. - 12:30 p.m.



DECEMBER YAHRZEITS

Secular dates correspond to Hebrew date of death
Observance of yahrzeit begins at sundown the previous day
All yahrzeits observed at Beth Ami

Announced on November 30 & December 1

December 1 Ronald I. Friedman
First husband of Dr. Jeanne Crump
December 2 Esther Mazner
Mother of Martin Mazner
December 2 Pearl Monoson
Mother of Rosalie Schweit
December 5 Noah Minuskin
Father of Joseph Minuskin
December 6 Mary Minuskin
Mother of Joseph Minuskin
December 7 Patrick O'Brien
Husband of Norma O'Brien
December 7 Alma Shapiro
Mother of Raynore Paule

Announced on December 7 & 8

December 8 Cemen Nemchenko
Brother of Sarah Tyutinman
December 9 David Altaras
Father of Ety Dranow
December 10 Olive Cordill
Mother of Kim Cordell
December 11 Norman Mann
Father of Anne Mann
December 11 Goda Tyutinman
Mother of Adolf Tyutinman
December 12 Rose Kovar
Grandmother of Dr. Gary Herzberg
December 13 David Rostov
Husband of Tova Rostov
December 13 Isaac Wallcave
Father of Lawrence Wallcave

Announced on December 14 & 15

December 15 Rachel Penkovich
Stepmother of Sarah Tyutinman
December 15 Miriam Trepp
Wife of Rabbi Leo Trepp
December 16 Carol Cohn
Mother of Debbie & Henry Cohn
and Lydia Ross
December 16 Gertrude German
Mother of Ellen Mundell
December 16 Nochem Kanckin
Father of Sarah Tyutinman
December 16 Evelyn Schwaber
Mother of Fredrika Gross

December 17 Gert Cohen
Mother of Eli Cohen
December 17 Ken Lipfield
Husband of Arline Thomas
December 17 Bella Steinberg
Wife of Morris Steinberg
December 18 Albert "Bud" Katzel
Husband of Jacqueline Katzel
December 20 Miri Fae Edelstein
Daughter of Bruce & Ivy Edelstein
December 21 Anne Gordon
Mother-in-Law of Dave Rubin &
Grandmother of Elizabeth Stalker

Announced on December 21 & 22

December 24 Abraham Backman
Father of Roslyn Edelson
December 24 David Goldberg
Father of Betty Franks
December 25 William Friedman
Grandfather of Joslyn Metzger
December 25 Dorothy Goldberg Murov
Sister of Betty Franks
December 26 Robert Maurice Deal
Brother of Barbara Whitaker
December 26 Jack Schiffman
Father of Bernice Fox
December 27 Beatrice Dzik
Mother of Judith Dzik
December 27 Bea Kaplan
Grandmother of Michelle Zygielbaum
& Mother of Helen Margoese

Announced on December 28 & 29

December 29 Mordachai Ben Hershel
Brother of Evelyn Gurevitch
December 30 Gladys Baba
Mother of William Cordell
December 30 Olive Conklin Boyer
Mother of Ruth Rosenberg
December 30 Gail Warner Kreger
Sister-in-Law of Jonathan &
Valerie Kreger
December 30 Julius Sterman
Father of Milton Sterman
December 31 Dean Fleming
Father of Andy Fleming
January 2 Herman Erien
Father of Judith Wallcave

January 3 Edith Volkmann
Sister of Evelyn Gurevitch
January 4 Henry Rosenblatt
Brother of Miriam Rubinstein

December Anniversaries

5 William & Susie Friedman
7 Ben & Connie Goldman
9 Iosef & Marina Voulfson
10 Herb & Ellen Brosbe
18 Ronald & Lillian Shelan
23 Howard & Adrea Moss
24 Jeffrey & Ety Dranow

December Birthdays

2 Carol Appel
5 Ethan Glaubiger
5 Carol Zeidman
8 Julie Feingold
8 Ronald Shelan
9 Max Graff
10 Steven Rose
10 Ronit Sepulveda
13 Eleanor Cohen
13 Colleen Rose
14 Herb Brosbe
14 Michael Kupperberg
14 Mark Epstein
16 Michelle Glaubiger
16 Candice Mann
19 Sheyna Bakman
19 Bruce Kolman
19 Marlene Lowenthal
19 Carolyn Metz
19 Dan Pleasant
19 Patricia Sherman
20 Stanley Feingold
21 Jerry Zenick
21 Jonathan Cohen
23 Jill Goldberg
24 Natalie Friedman
25 Doris Langer
26 Joan Lubar
26 Robin Rose
27 Fredrika Gross
27 Heidi Harmon
27 Lindsay Kvam
29 Marilyn Sommer



JEWISH COMMUNITY EVENTS



At the Friedman Center

THE 2008 ABSOLUTE MUSIC SEASON

All concerts are from 2-4pm on Sunday afternoons

January 6 THE ORIENT EXPRESS ON THE GYPSY TRAIL

Doug Morton's Orient Express
& Amy Luna Manderino,
Gypsy Trail Dancer

February 10 KLEZMER CONCERT

March 9 CHAMBER MUSIC

String Circle
Joe Edelberg, violin
Anthony Martin, viola
Thalia Moore, cello

April 6 TO BE ANNOUNCED

May 18 CHAMBER MUSIC

String Circle trio
Norma Brown, piano
A program of Beethoven and Brahms

*Hella and Oliver Margolin Memorial Concert
Sponsored by Mark Rosen*

June 8 MUSIC MATTERS

Rebecca Plack, soprano
with Blaise Bryski, piano
Also featuring special guest artist,
Stephen Guggenheim, tenor

Subscription tickets are now available at only \$75 for five concerts, additional concerts available to subscribers at subscription prices. Single concert admission: \$18.

For information or to place orders: **Call 538-1899.**

Mail orders to:

**Absolute Music
3051 Las Mesitas Court
Santa Rosa, CA 95405**

High Noon at Hillel – Open house and Fun-raiser

Hillel of Sonoma County wants to show off our new home, so put on your boots, saddle up your horse, and ride on down for a hearty brunch and some good entertainment...we're fixin' a plate just for you! There might even be a friendly card game in the saloon...

When: Sunday morning,

December 2

11:30 a.m. to 2:00 p.m.

Where: Hillel of Sonoma County,
85 La Plaza, Cotati
(Same building as Ner Shalom).

Admission: \$36/adult, \$18/children,
\$5/SSU and SRJC students with ID
– www.sonomahillel.org for more
information.

Coming up in December 2007 at JFCS in Sonoma County Senior Services Assistant

For more information on the opportunities below contact Andrea Nett, Volunteer Coordinator at **707/303-1502** or Andreas@jfcs.org.

Make a difference in the lives of our community seniors! The JFCS Senior Companion program has expanded and is now providing services to seniors with significant mental health challenges. If you love working with seniors, if you have background, experience or interest in working with those suffering from mental illness, or any other kind of illness, this opportunity is for you! We offer excellent training, supervision and support.

Volunteer Drivers needed for JFCS RIDES

We are seeking friendly, responsible volunteers to transport seniors to appointments in the community. Use your own car, you will be reimbursed for mileage, and work as much or as little as you would like. We need volunteers in Santa Rosa, Rohnert Park and Petaluma. Training will be provided.

Sign Up Now: Tax Preparation Volunteers Needed

Are you looking for a meaningful volunteer experience? You can help low-income families obtain their earned income tax credits. This program is a free service to families. How about 3 to 5 hours a week? Choose weekday, evening or Saturday for volunteering. This program starts mid-January through April 15, 2005. Complete your Tax Training and Certification online, using a self-paced IRS interactive program. JFCS provides orientation to procedures, support, computers and space to meet with families and do the work. We are seeking both English and Spanish speaking volunteers!! All volunteers who pass the test must attend a final IRS orientation (date to be announced).

JEWISH COMMUNITY EVENTS

Jewish Community Center of Sonoma County, 528-4222



The JCC Sonoma County Jewish Film Series 2007 December calendar

These are the last films of the 2007 Series.

Tickets are still available. Call 528-4222 to order tickets or go to www.jccsoco.org for more information.

Only Human

December 5, 1:00 pm & 7:15 pm PETALUMA

December 6, 1:00 pm & 7:15 pm SANTA ROSA

Rape of Europa

December 11, 1:00 pm & 7:15 pm PETALUMA

December 13, 1:00 pm & 7:15 pm SANTA ROSA

Santa Rosa: Rialto Cinemas Lakeside, 551 Summerfield Road

Petaluma: Boulevard Cinemas, 200 C Street

Friendship Circle Luncheon with Shirlee Zane and Diana Klein

Monday, December 17, 12 p.m., Beth Ami Social Hall

\$8 for members, \$10 for non-members of Friendship Circle. Fee includes lunch and dessert. Call Barbara Scharf, 528-1182, to RSVP. Reservations required.

4th Annual JCC Jewish Meditation Retreat

December 14-16, Camp Newman

Bi Adoni –“My God is Within Me.” ~ Genesis 44:18

With Rabbi Ethan Franzel, our wonderful local rabbis, teachers, musicians and each other, we will practice hitbonedut/contemplation of spiritual wisdom. Experience the transformation as we recognize that our source of strength, joy, and contentment comes not from any outside source, but from the Divine World within.

Don't miss this unique opportunity to celebrate, in community, a very special Shabbat weekend that will enhance your daily spiritual life.

For more information contact Dr. Sheila Katz, Director, JCC Jewish Meditation Program at sheilak@jccsoco.org

Bi Adoni ~ My God is Within Me
Genesis 44:18



Revealing the Secrets of The Zohar:

Three Study Sessions with Rabbi Lavey Derby

Sundays: January 13 & 27 and February 10, 2:00-5:00 p.m.

Congregation Shomrei Torah, \$36 per class or \$92 for series

The Zohar (Hebrew: “Splendor, radiance”) is widely considered the most important work of Kabbalah, Jewish mysticism. It is a mystical commentary on the Torah, written in medieval Aramaic and medieval Hebrew. It contains a mystical discussion of the nature of God, the origin and structure of the universe, the nature of souls, and more.

No knowledge of Hebrew or prior experience with the Zohar is required for this class; all materials will be translated and interpreted..

For more information contact Dr. Sheila Katz, Director, JCC Jewish Meditation Program at sheilak@jccsoco.org, or 528-4222. Brought to you by CST Life Long Learning and the JCC Jewish Meditation Program

Russian River Jewish Community Chanukah Party

The yearly RRJC Chanukah party will take place on Friday, December 7 at 6 p.m. in the Senior Center, 15010 Armstrong Woods Road, Guerneville.

There will be singing, dancing, music by Jubilee Klezmer Ensemble, lighting of candles, story telling and a potluck feast with fresh latkes.

Bring your Chanukah, candles, decorations, songs, and festive dishes.

Members free, guests \$6

Information: 869-3273 or

rrjews@yahoo.com

Contact Sonia Tubridy, 869-3273

RRJC is affiliated with the Jewish Community Federation

The Jewish Community Free Clinic's

Chinese Food & A Movie will be taking place this year once again at the Friedman Center on December 25.

Doors open at 3 p.m., the first movie will be screened at 3:30, dinner is scheduled for 4:30. We will be serving Chinese food as per our custom.

Reservations are highly recommended please! \$18 for individuals, \$36 for families includes the movies and dinner.

Reservations can be made by calling 585-7780.

See you there!

Featured Films:

◆ The Imported

Bridegroom

◆ The Power of Good

The Peking Chef

Dinner

By popular demand,

MC Steve Einstein

Children's games and face painting

□

□



JEWISH COMMUNITY CONTACTS

Hadassah, ROSE ANN PREMI ----- 537-9208

Hillel, DAVID RUBINSTEIN ----- 795-5464

Jewish Community Federation ----- 568-6207

JNF-Trees in Israel, SHEVI POSMAN ----- 535-8805

Jewish Community Free Clinic ----- 585-7780

DONNA WALDMAN

Jewish Community Info & Referral-----877/777-5247

JUDY MUSANTE

Jewish Community Relations Council ----- 415/957-1551

SUZAN BERNIS

Jewish Family & Children's Services ----- 571-8131

DIANA KLEIN

Jewish Community Center ----- 528-4222

BETH GOODMAN

(ALL AREA CODES ARE 707 UNLESS INDICATED OTHERWISE)

INVITATIONS
BETH AMI GIFT SHOP
 STOP BY OR CALL TO SEE ALBUMS OF
 BEAUTIFUL
 INVITATIONS
 FOR ALL OCCASIONS.



ROSALIE SCHWEIT
 527-9001
 ELAINE GOLEMB
 539-8084

Since 1956

Santa Rosa Shoes
"Quality You Can Stand On"

Specializing in Wide Widths & Large Sizes

2255 Cleveland Avenue
 Santa Rosa, CA 95403
 (707) 546-1083

MON - SAT 9-6
 THUR 9-8
 CLOSED SUNDAYS

Doctors do it



Lawyers do it



Gov't does it



Even musicians do it



Isn't it time for you to do it?

Marketing Campaigns ~ Logos & Identity ~ Websites
 All your marketing communications in one place
 Since 1996.



Web Presence
 544-9882
www.webpresenceinc.com

BROOKDALE
 LODGE AT PAULIN CREEK
Exceptional Senior Living

Studio - 3 bedroom residences
 Monthly rental includes: Three meals daily
 Weekly housekeeping ~ Scheduled transportation
 Utilities and cable TV ~ Full time activity program
 CALL TODAY TO SCHEDULE A PERSONAL TOUR
 AND COMPLIMENTARY LUNCH!

2375 Range Avenue, Santa Rosa (707) 575-3722



**Music for Your
 Special Occasions**

*Zim
 Zum*



Contact
 Rose or Jon Batzdorff
jon@sierraortho.com

707
 (707) 539-7051



Sonoma Cutlery
 Since 1979



FAMILY OWNED & OPERATED FOR 26 YEARS

The Best Price in Town on
GERMAN FORGED CUTLERY
 Always 20% - 45% off
 & **FREE** Sharpening for life!

The Largest knife Store in California
 Over 3000 knives in stock

Hunting, Fishing, Camping,
 Swiss Army, Buck, Case, Gerber,
 & the finest kitchen cutlery in the world!

• WUSTHOF • SONOMA CUTLERY
 • HENCKELS • MESSERMEISTER

www.SonomaCutlery.com

(707) 542-6433 In The Coddington Mall *See store for Details

Wine Country Kosher
...still trendy after 3000 years



MODERN • GOURMET • KOSHER
 • International Jewish Cuisine •
 • Flavors of the Wine Country •

CATERING

Andrea Nett
 707/206-8686
anett1@sbcglobal.net

Events • Business Portraits • Commercial

Owen Scott Shirwo
Photographer

707-539-3940

macowen@sbcglobal.net

web site: www.photoshelter.com/user/ossphotos



earth
in
upheaval
e. i. u., inc.

for the service
and repair
of fine foreign automobiles

an unusual name
with
unusual excellence

established 1970

specializing in:
MERCEDES BENZ
BMW
AUDI
VOLVO
SAAB
JAPANESE
S.U.V.s

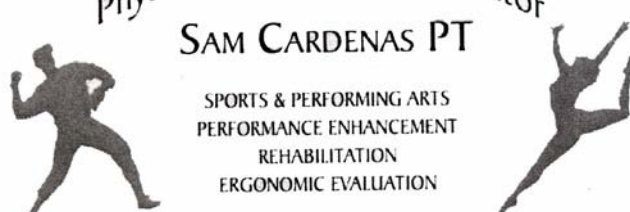
especially qualified in:
FUEL INJECTION
DRIVEABILITY
ELECTRICAL
DIAGNOSTICS
EMMISSIONS
AIR CONDITIONING

CHASSIS DYNAMOMETER
10 minutes from Santa Rosa
at
198 HIGH STREET
SEBASTOPOL, CA 95472

Open Monday - Saturday
rental cars available

Richard Kahn (707) 823-3777

physical Therapist / Educator
SAM CARDENAS PT
SPORTS & PERFORMING ARTS
PERFORMANCE ENHANCEMENT
REHABILITATION
ERGONOMIC EVALUATION



1211 College Ave. Santa Rosa, CA 95404
(707) 544-4334 Fax: (707) 544-9165

The Friedman Center has everything
you need for any special event. Bar & Bat Mitzvahs,
weddings, receptions, banquets, fundraisers up to
465 people. State-of-the art audio and visual
systems, perfect acoustics. Full stage with
theatrical lighting, 6500 sq. ft. ballroom.
Ample parking.
Ruth Turner, Director, 360-3021
Monday - Thursday, 9 a.m. - 3 p.m.
Friday, 9 a.m. - 2 p.m.



B. Leena Newcomb
Photographer

Black & White Portraiture
Intimate Weddings
B'nei Mitzvahs

www.sonic.net/~blee
707 548 4817



BERNSTEIN
ORTHODONTICS
ADVANCED ORTHODONTICS FOR CHILDREN AND ADULTS

Rael Bernstein
D.D.S., M.S., INC.

(707) 575-0600
515 FARMERS LANE
SANTA ROSA, CA 95405
www.bernsteinbraces.com

(707) 836-8360
8741 Brooks Rd. S. STE. 200
WINDSOR, CA 95492

DANIELS CHAPEL of the ROSES FUNERAL HOME

Serving Sonoma County since 1875
Family Owned and Operated
Honoring all Jewish Traditions

Orthodox Caskets and Supplies
Tahara Service Facilities
Traditional and Memorial Services
Shipping Services to & from our area
Pre-Planning/Pre-Funding Plans Available

Telephone: 525-3730
Fax: 525-3735

**The Daniels Family: William, Patricia, Wesley,
Carol & Aimee and staff**
are available for arrangements seven days aweek.
1225 Sonoma Avenue, Santa Rosa

CA Lic.: FD-209 CA Lic.: CR-92

Earnings Devoted to Philanthropy

SINAI MEMORIAL CHAPEL
CHEVRA KADISHA

1501 Divisadero Street
San Francisco, CA 94115

(415) 921-3636

FD 262

www.sinaichapel.org

3415 Mt. Diablo Blvd.
Lafayette, CA 94549

(925) 962-3636

FD 1523

pre-need funeral arrangements available

Gene B. Kaufman, Executive Director

NORTH BAY BEHAVIORAL HEALTH, INC.

JOHN LEIPSIC, MD & ASSOCIATES

THE POWER OF INTEGRATED TREATMENT FOR KIDS, TEENS AND FAMILIES

Psychiatric evaluation, medication management and
psychological testing


Psychotherapy for children, adolescents and adults



Experienced and competent clinicians

Intake Information – 542-8979
1421 Guerneville Road, Suite 114
Santa Rosa, CA 95403
www.nbbhealth.com

Yaakov Mossman



P.O. Box 2791
Santa Rosa, Ca 95405
707 526 1559
866 890 4091 fax
mytaxman@sonic.net

ecm bookkeeping services
helping you make dollars by making sense of the numbers
Tax preparation. QuickBooks. Consulting.



Jeanne L. Crump, D.O.

Osteopathic Manipulative Therapy

1211 College Ave. Telephone: 707-544-4334
Santa Rosa, CA 95404-3907 Fax: 707-544-9165

PARK AVENUE

CATERING

♦ FREE CONSULTATIONS

♦ PARTY PLANNING

♦ KOSHER CATERING AVAILABLE

CALL FRAN PIOTRKOWSKI

707-793-9645 ♦ FRAN@PARKAVECATER.COM



Santa Rosa Memorial Park

1900 Franklin Avenue, Santa Rosa

Every life is worth loving and remembering ~ always...

Dedicated lawns and services for Beth Ami families.

Ask us how to secure the price of cemetery property
with pre-need planning. Call today ~ **542-1580**

Santa Rosa Mortuary

Eggen & Lance Chapel

1540 Mendocino Avenue, Santa Rosa ~ **545-3747**

Honoring your traditions with orthodox caskets,
burial containers and Tahara Services.

Concerned about the cost of funeral services?

Don't be. Pre-need planning lets you control costs by
protecting today's prices. Compare and save.

COA 107 CR 171

FD 240 & 1779

CONGREGATION BETH AMI EVENT RSVP FORM

Names of all attendees:

Phone: _____

Shabbat Dinner

6:00 P.M. DINNER (RESERVATIONS REQUIRED)

7:30 P.M. FAMILY SHABBAT SERVICES

8:30 P.M. ONEG, MUSIC & DANCING

2007

☐ Friday, December 7

Special Guest: Ahuva Batz

2008

☐ Friday, January, 4

☐ Friday, February 1

☐ Friday, March 7

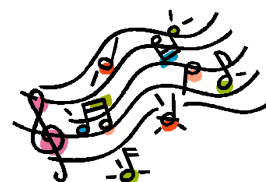
☐ Friday, April 4

☐ Friday, May 2

☐ Friday, June 6

**Live music by Zim Zum and
Israeli folk dancing after dinner!**

CHANUKAH & All That Jazz Tuesday, December 4 6 - 8 p.m



**Teen Jazz Band: In Black
Chanukiah Lighting
Homemade Latke Dinner
Dreidels & Gelt
Zayde & The Chanukah Latkes
Puppet Show for the kids**



*The Puppet Players will magically weave a wondrous tale of
lovable Bubby and Zayde and the Chanukah latkes.*

Payment Information: Shabbat Dinners

of adults _____ @ \$14 each

of youth (6-12) _____ @ \$7 each

~children 5 and under are free~

Amount enclosed for this event = _____

**RVSP by Friday before the dinner to
avoid late fee!**

Payment Information: Chanukah Party

of adults _____ @ \$12 each

of youth (6-12) _____ @ \$6 each

~children 5 and under are free~

Amount enclosed for this event = _____

Mail/Fax/Bring this form with payment to:

Congregation Beth Ami, 4676 Mayette Avenue, Santa Rosa, CA 95405

Phone: 707/360-3000, Fax: 707/360-3003



Congregation Beth Ami

4676 MAYETTE AVENUE, SANTA ROSA, CA 95405

DATED INFORMATION.

PLEASE DO NOT
DELAY DELIVERY.

Non-Profit Org.
U.S. Postage
PAID
Permit No. 185
Santa Rosa, CA

Save the Date

February 23, 2008

A Musical Tribute

for Susanne & Al Batzdorff

December schedule of services

Friday Evening, November 30

(Candle Lighting: 4:33 pm)

7:30 pm Shabbat Evening Services

Saturday December 1 • 21 Kislev

9:30 am Shabbat Vayeshev Services

Library Shabbat

Potluck lunch following services

(Saturday Havdalah: 5:33 pm)

Friday Evening, December 7

(Candle Lighting 4:32 pm)

6:00 pm Family Shabbat Dinner

7:30 pm Shabbat Evening Services

Guest: Ahuva Batz

Saturday December 8 • 28 Kislev

9:30 am Shabbat Miketz Services

Guest: Ahuva Batz

Potluck luncheon following services

(Saturday Havdalah: 5:33 pm)

Friday Evening, December 14

(Candle Lighting: 4:33 pm)

7:30 pm Shabbat Evening Services

Saturday, December 15 • 6 Tevet

9:30 am Shabbat Vayigash Services

10:00 am Tot Shabbat

Potluck lunch following services

(Saturday Havdalah: 5:35 pm)

Friday Evening, December 21

(Candle Lighting: 4:35 pm)

7:30 pm Shabbat Evening Services

Saturday, December 22 • 13 Tevet

9:30 am Shabbat Vayechi Services

Potluck lunch following services

(Saturday Havdalah: 5:38 pm)

Friday Evening, December 28

(Candle Lighting: 4:39 pm)

7:30 pm Shabbat Evening Services

Saturday, December 29 • 20 Tevet

9:30 am Shabbat Vayishlach Services

Potluck lunch following services

(Saturday Havdalah: 5:42 pm)

If you have need of a **minyan** (e.g. to say Kaddish), please call the office
a week ahead of time to arrange for a morning service.