



CONGREGATION
Beth Ami

4676 MAYETTE AVENUE, SANTA ROSA, CALIFORNIA 95405

Shofar

707-360-3000

DECEMBER 2006

KISLEV/TEVET 5767



COMMUNITY CHANUKAH PARTY WITH INTERNATIONALLY ACCLAIMED

SINGER SONGWRITER FRAN AVNI

Candle Lighting • Sing Along • Dreidels & Gelt • Israeli Folk Dancing
Special Student Performance • Homemade Latkes, Salads, Dessert

At our annual latke party we'll sing along with Fran, a delightful performer who lights up the stage with her warmth, vitality and passion for Jewish music. Her lively concerts involve children, parents and grandparents in a joyous performance of song and music.

Tuesday, December 19, 6 p.m.

\$12 per adult; \$6 per child

Bring: Menorah, 6 candles, and gently worn clothing for children ages 0-12 years.



CHILDREN'S CHANUKAH CRAFTS AND & NOSH

Music • Holiday Crafts
Prizes • Snacks • Fun

Cost: \$3 per child to make first three craft projects, \$1 for each additional project.

Sunday, December 10

12 - 1:30 p.m.

Please bring children's books for those in need.

Event sponsored by the Or Ami Religious School Committee.

Proceeds benefit RS events.

Sign up Early!

The RSVP form for all these events is on page 15.

SISTERHOOD HOLIDAY BRUNCH & ART SUPPLY COLLECTION

Mitzvah Project: Help brighten the environment of foster children. We're going to create a gift basket brimming with art supplies for children ages 6 to 12 who reside at The Children's Village of Sonoma County. **Suggestions:** oil pastels, markers, paint brushes, fabric, ribbons, buttons, craft paint (except oil), colored pencils, glue bottles/sticks, construction paper, arts & crafts supplies. We'll have a musical cd (thanks to Jackie & Bud Katz) for everyone who donates to the basket. You may bring a donation regardless of whether you attend the brunch.

Sunday, December 17, 10 a.m.

Tickets are \$7.50.

Buy one ticket get one ticket free!



Congregation Beth Ami

4676 MAYETTE AVENUE
SANTA ROSA, CA 95405
(707) 360-3000
(707) 360-3003 FAX
OFFICE@BETHAMISR.ORG
WWW.BETHAMISR.ORG

Rabbi George Schlesinger

Congregation Beth Ami

Mission Statement

Through celebration, learning, prayer and
community, we seek to enrich our lives, transform
our hearts, help heal the world and
sustain our Jewish heritage.

December Hours of Operation



	Office	Library	Gift Shop (see page 15)
Monday	12 -4 pm	9 am - 12 pm	11 am - 1 pm
Tuesday	12 -4 pm	3:45 - 6 pm	3 - 5 pm
Wednesday	closed	closed	11 am - 1 pm
Thursday	12 - 4 pm	3:45 - 6 pm	3 - 5 pm
Friday	10am - 2 pm	closed	closed
Saturday	closed	closed	closed
Sunday	closed	9:15 am - 12:15 pm	10 - 12:30 pm

PERSONNEL

Rabbi George Schlesinger

360-3004
rabbi@BethAmiSR.org
Juli Scherer, Ex. Director
360-3012
juli@BethAmiSR.org
Eric Mossman, Bookkeeper
360-3011
Bookkeeper@BethAmiSR.org
Elizabeth Jarlsberg, Administrative Support
360-3000
office@bethamISR.org
Karen Gould, Newsletter
360-3000
gouldk@sbcglobal.net

Lenore Monsour, Nursery School Director

360-3030
ns@BethAmiSR.org
Elisabeth Van Nuys, Religious School Director
360-3000
rs@BethAmiSR.org
Ruth Turner, Friedman Center Director
John Kitchens, Friedman Center Custodian
360-3021
ruth@friedmaneventcenter.com
Susy Raful & Helen Margolese, Gift Shop
360-3022

Susanne Batzdorff, Librarian

sbatz@sonic.net
360-3006
Sharon Benson, USY Advisor
(858) 735-8816
scusynf@hotmail.com
Call the office at 360-3000 to leave a message for:
•Jose Espinoza, CBA Custodian
•Rosalie Schweit, Gift Shop Invitations
•Francie Rogovin, Kitchen Manager
•Patty Bernstein, Torah/Haftarah Reading
•Michele Guttenberg, USY/Teen Programs

DEADLINE FOR JANUARY SHOFAR

**FRIDAY,
DECEMBER 15**

All editorial submissions must be received in the *Shofar* box in the Beth Ami office or via email on or before the deadline. **All submissions are subject to editing for clarity, brevity and content.** Please submit articles as Microsoft Word documents via email attachments. Contact Karen Gould, Editor, at 360-3000 or at gouldk@sbcglobal.net with corrections, concerns or questions.

The *Shofar* is a periodical issued monthly except for a combined May/June/July issue. It is published by Congregation Beth Ami, 4676 Mayette Avenue, Santa Rosa, CA 95405. All members in good standing receive the periodical free. Yearly subscriptions are \$25.00. This month's issue is:

Volume 12
Issue 4
Issue Date: December 1, 2006

2006-2007

OFFICERS

AND BOARD OF

DIRECTORS

President, Andy Fleming
andyflem@gmail.com
Treasurer, Henry Cohn
henry_s_cohn@yahoo.com
Secretary, Robin Winning
robinwinning@sbcglobal.net
VP for Administration,
Al Batzdorff
abatz@sonic.net
VP for Youth and Education,
Dave Ballo
david_ballo@agilent.com

VP for Facilities,
Jon Simkovitz
jon@sforh.com
Library Committee Chair,
Susanne Batzdorff
sbatz@sonic.net
Nursery School Committee
Co-Chair, Judy Gunnar
judester@cutleryweb.com
Nursery School Committee
Co-Chair, Richard Lazovick
rbl@sonic.net
Religious Practices
Committee Chair,
Patty Bernstein
basberyl@sonic.net
Religious School
Committee Chair,
Val Kreger

jvkreger@sbcglobal.net
Youth Programs,
Michele Guttenberg
clarityink@aol.com
Members at Large
Zach Baurer
zach@gandgfoods.com
Bonnie Boren
b_boren@sbcglobal.net
Richard Kahn
brownkahn@comcast.net
Members Ex Officio
Rabbi George Schlesinger
rabbi@BethAmiSR.org
Juli Scherer
juli@BethAmiSR.org
Marcia Gladstone
mgld@sonic.net



RABBI'S REMARKS

Rabbi George Schlesinger

On Shabbat, November 11, we took note of the fact that the second weekend of November is designated National Organ Donor Sabbath. Around the country churches and synagogues devote sermons to the pressing need for more organ donors to step forward. Our speaker, Barry Wald was a heart transplant recipient having received his heart from a 19 year-old girl who died tragically from complications from asthma. She had decided to become a donor after hearing a speaker in her Driver's Education Class.

Although Barry spoke briefly, his message was unmistakable: We have the opportunity to give life to others when we choose to be an organ donor.

Unfortunately, there is the presumption in the Jewish world that organ donation is contrary to Jewish law. This is not true. In fact, the Committee on Jewish Law and Standards of the Conservative Movement has written a legal opinion which states: One is obligated to permit postmortem transplantation of his or her organs in lifesaving medical procedures and that withholding consent for such organ donation is contrary to Jewish law.

I wish to illustrate this issue by including an article by my colleague Rabbi Mark S. Diamond formerly the rabbi of Beth Abraham in Oakland and now the Executive Director of the Southern California Board of Rabbis. It's entitled "A Love Story."

"This is the story of my friend Valerie, whom I first met last year. Valerie sent me an email introducing her as a Jew-by-Choice who worked as a flight attendant. She wondered if I was the same Rabbi Mark her fiancé Glenn knew from his synagogue's high school youth group. Glenn and I had lost touch with one another when his family moved to California. Val asked, was I the same individual, and, if so, would I officiate at their wedding?

Thanks to Valerie, two best friends were reunited after more than three decades apart. More importantly, Glenn and Val had found each other. Their love was intoxicating, with family and friends commenting how happy each was to have found his/her soul mate.

On a sunny October afternoon, I married Glenn and Valerie in a traditional Jewish wedding on a yacht in Marina del Rey. We joined with their children, parents, relatives and friends for a joyous ceremony on the deck replete with a wind-blown huppah (wedding canopy). Val's artistic touches were evident in the wedding program she designed, the ketubah (Jewish marriage document) she selected, and the extra touches that made the day special. Adding to the festivities were other yachts in the harbor whose captains blew their horns in celebration with shouts of mazal tov from their own passengers.

Two months after that glorious day, Glenn called to tell me that his beloved Valerie had suffered a brain aneurism and was in critical condition in an area hospital. I rushed to the

ICU unit, only to find our beautiful, 47 year-old Valerie near death. I sat with Glenn, Val's daughters, and other family members as a neurologist informed them that Valerie was brain dead and being kept "alive" by machines.

Amidst the overwhelming shock and grief, the medical staff gently raised a sensitive but timely subject: Would the family consider donating Valerie's organs to others? Their initial reply was no, since Valerie had thought that Jewish law prohibited organ donation. They too believed that donating organs was a sin. Fighting back tears, I counseled family members that organ donation is not contrary to Jewish law. In fact, rabbinical authorities from all Jewish movements agree that organ donation is a tremendous mitzvah (commandment) and the highest form of piku'ah nefesh (saving life).

An emotional discussion followed. What would Valerie want her loved ones to do had she known that organ donation is permissible according to Jewish law? In the end, Valerie's family consented to donating her organs. I sat with my friend Glenn as a nurse from OneLegacy (the Southern California transplant donor network) completed the paperwork to initiate this awesome mitzvah. I witnessed the OneLegacy team spend day and night painstakingly matching Valerie's organs with compatible donors, as her family and I made plans for her funeral.

In life, Valerie gave 100% to whomever she was with and whatever she was doing. In death, Valerie gave the ultimate gift. One of her kidneys is now in the body of a 76 year-old man who had been on dialysis for six years. He is married and the father of three children. His kidney function is now good and he is off of dialysis.

Valerie's other kidney went to a fifty year-old man. He is single, active, and used to ride his bicycle 40-50 miles a week. Prior to the transplant, he had been on dialysis. Valerie's kidney was a "zero mismatch," meaning that it was a perfect match for this recipient. He told the transplant team that he knows he "won the lotto" by receiving such a perfectly matched kidney. He is doing well and his prognosis is quite good.

These are just two of the fortunate recipients of Valerie's donated organs. The quality of their lives has improved dramatically since their transplants. In some cases, they are alive because of their transplants.

I will never understand why my friend Valerie was taken from us in the very prime of her life. When I sit and cry with her family, I cannot know their pain and anguish nor can I comprehend their tragic loss. I do know that they find a small measure of comfort in the knowledge that Valerie gave the gift of life to others. Amidst the darkness, they have found a ray of light and hope for the future."

Knowing that one of our Beth Ami members just donated a kidney to a man who only a year ago was a total stranger makes this story even more poignant. I strongly urge every member of Beth Ami to sign a donor card and to register with www.donateLIFEcalifornia.org. It is a wonderful way to do something truly meaningful in this world.



ANNOUNCEMENTS & EVENTS



Tallit Making Workshop

November 19, 1:30-4:30

December 3, 1:30 – 4:30

December 10, 1:30-4:30

\$162 per person,
Beth Ami Social Hall

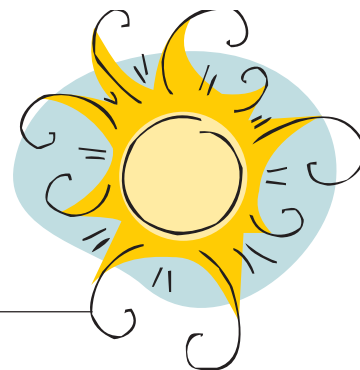
Includes all materials for one silk tallit, three classes and instruction from Marcia Gladstone in coordination with Rabbi Schlesinger. The class will be limited to 15 participants. Participants may make one tallit each. Contact Marcia, 525-8623, if you want to use a fabric other than silk. Artistic and sewing skills are not necessary.

Shofar Mailing

If you'd like to receive your Shofar via 1st class mail please call the office and we'll set it up for you. The charge is \$10 per year.

Shining moment:
every moment:
bright & gay,
or
gloom & gray
is a shining moment:
when I'm
with u!

By Mark Rosen



To my Beth Ami friends,
Thank you for the generous donations to
Shomrei Torah made in memory of Walter.
~Sherrill Kuttner

Patty Bernstein honored

At the Northern California Region meeting of the United Synagogue of Conservative Judaism, on November 12, Patty Bernstein received a certificate of appreciation "In Recognition of Meritorious Service to Conservative Judaism and to the Jewish Community." Each synagogue represented had one member cited for such a contribution. Patty was specifically honored for her work heading the Religious Practices Committee, leading the Sonoma County Chevra Kadisha, and as one of the leaders of the Rosh Chodesh group at Beth Ami.



OUR CONGREGANTS' FAVORITE BOOKS



THE MOST OUTSTANDING ENTRY
WILL EARN A PRIZE

Please bring to the library the title of a book you have enjoyed, with a brief description of what it's all about and why you like it. This contest is open to folks of all ages. We will display the results in the exhibit case in the Social Hall during Jewish Book Month and the eight days of Hanukkah.
~Susanne Batzdorff, Librarian

Motown Megillah & Purim Banquet

Saturday, March 3, 2007

Singers, dancers and actors
needed.

Come to the first audition,
Sunday, December 17.

Contact Kyle Marsh, 894-2407



Ongoing programs at Beth Ami

For information about:

Torah and Talmud study please see schedule on page 5.
Shabbat Yoga – Call Hannah Caratti 578-4040.



TUESDAY

♦ Conversational Hebrew with Judy Clack

Beginning Level: 10-11 a.m., Room 14

♦ Israeli Folk Dancing

7 p.m., Friedman Center. For more info contact Leanne Schy at 528-4874 or Leanne@sonic.net.

TUESDAY & THURSDAY

♦ Exercise Class 9-10:30 a.m., Social Hall

offered by the JCC Friendship Circle

THURSDAY

♦ Conversational Hebrew
with Judy Clack

Intermediate Level: 10-11 a.m., Room 14

FRIDAY

♦ Exercise Class, 10-11:15 a.m., Social Hall

Instructor Barbara Goodridge will teach class in the Social Hall every Friday, except for the first Friday of the month when class will be held in lounge.

offered by the JCC Friendship Circle

SUNDAY

♦ Meditation/Chant

9:45-10:45 a.m., Friedman Center Chapel



Calendar of Thursday Classes

NEW!

Torah/Bible Class

November 30, 2006
December 14, 2006
February 8, 2007
February 22, 2007
March 8, 2007
March 22, 2007
April 12, 2007
April 26, 2007
May 10, 2007
May 24, 2007
June 14, 2007
June 28, 2007

Talmud Study

December 7, 2006
December 21, 2006
February 15, 2007
March 1, 2007
March 15, 2007
April 5, 2007
April 19, 2007
May 3, 2007
May 17, 2007
June 7, 2007
June 21, 2007

Location: Friedman Center Board Room.

Time: 7:00 pm.

Adult B'nai Mitzvah Class

Are you interested in making a commitment to studying for your Bar or Bat Mitzvah? Please contact the office *or* check off the box on the RSVP form on page 15, send it into the office, and we'll put your name put on the list. Look for more information about an orientation to discuss the details.

"The List" so far...

Andy Fleming
Nancy Fleming
Juli Scherer
Karen Gould
Andrea Nett
Ruth Rosenberg
Staci Leipsic
Jane Meyer
Anne Woods



THE 24th ANNUAL BOOK DISCUSSION SERIES

Once again we invite you to participate in a book discussion series that has attracted many folks who love books that stretch your mind and challenge your imagination and to discuss them with like-minded people.

We meet at Congregation Beth Ami in Room 12-13 on the first Wednesday of each month at 10 a.m. beginning in November.

Here is our schedule:

- 1) *Joy Comes in the Morning*, by Jonathan Rosen
- 2) *The Liberated Bride*, by A.B. Yehoshua
- 3) *The Namesake*, by Jhumpa Lahiri
- 4) *A Simple Story*, by S. Y. Agnon
- 5) *The March*, by E. L. Doctorow
- 6) *The Sabbath*, by A. J. Heschel
- 7) *Ten Thousand Lovers*, by Edeet Ravel
- 8) *Foiglmán*, by Aharon Megged
- 9) *Like Never Before*, by Ehud Havazelet

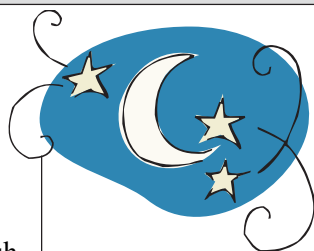
New members are welcome. If you have questions, please call Susanne Batzdorff at 538-9731.

November 1
December 6
January 3
February 8
March 7
April 4
May 2
June 6
July 11



Dark Nights, Bright Lights

Come light up the night with Beth Ami's Rosh Chodesh group on Thursday, December 21 at 7 p.m. in the Friedman Center. Bring your chanukiah, 8 candles, and spirit to spare as we share the lights in our lives and welcome the new month of Tevet. All Jewish women are welcome to attend. Bring a friend; make a friend. Questions? Call Bonnie Boren at 528-1628.



5767 Rosh Chodesh Women's Gatherings

Month	Date	Time	Location
Tevet	Thursday, 12/21/06	7 p.m.	Friedman Center
Shevat	Sunday, 1/21/07	11 a.m.	Friedman Center
Adar	Sunday, 2/18/07	11 a.m.	Social Hall
Nissan	Monday, 3/19/07	7 p.m.	Friedman Center
Iyar	Wednesday, 4/18/07	7 p.m.	Friedman Center
Sivan	Thursday, 5/17/07	7 p.m.	Friedman Center
Tammuz	Saturday, 6/16/07	overnight fun	private home
Av	Monday, 7/16/07	7 p.m.	Friedman Center
Elul	Wednesday, 8/15/07	7 p.m.	Friedman Center

Mazal Tov to Our Bar Mitzvah



JACOB WHITELEY
DECEMBER 2, 2006
11 KISLEV 5767

My name is Jacob Whiteley. I live in Sonoma and I go to Altimira Middle School. I will become a Bar Mitzvah on December 2, 2006. My Torah portion is Vayetze. When I'm not in school I like to bike ride and skateboard. My favorite subjects in

school are science and P.E. I previously went to religious school in Sonoma and I transferred to Or Ami a year and a half ago. I really like it here and appreciate all the help I have got from Rabbi Schlesinger, Elisabeth and Marcia. I hope you will join my parents, my two sisters, and me on Shabbat morning.



PRESIDENT'S PAGE Andy Fleming

The long and winding road

I want to use this column to explore how an Adult Bar Mitzvah fits into our organizational purpose and my individual Jewish growth.

Last month, our Board discussed our objectives and goals for the year. A component of this assessment included listing those things that we most wish to preserve at Beth Ami. We stated that we "value the opportunity that CBA provides for practicing a rich traditional Judaism and the skills that our members can achieve." Our membership has a wide range of synagogue skills – that is, the knowledge and learning that enables an appreciation of the Jewish prayer service and an understanding of the patterns and rhythms underlying the observance of Jewish rituals. One purpose of becoming an adult Bar or Bat Mitzvah is clearly to go to the next level of understanding, to immerse one's self deeper into the behaviors that manifest Jewish observance.

Many of us have experienced our children going through their years of B'nai Mitzvah training, and we appreciate the amount of learning that is involved. We would like to share that experience. We are adults, and thus we bring a lifetime of experience to the rigor of learning Jewish skills. Doing so in a group can be a powerful means to explore our Jewish selves and to form strong bonds within our community. Applying the discipline to learn Hebrew, study Torah, engage with our fellow students, and see how it all fits into our 21st century lives is valuable to us as individuals and to our synagogue as a vital Jewish institution.

And ultimately, participating in an adult B'nai Mitzvah group can allow us to wrestle with the central questions of being Jewish in the modern age. Does an understanding of Jewish ritual and ceremonial law bring us to an understanding of who we are and what is the nature of humanity? Is the practice of Judaism essential to "being Jewish"? What, in fact, does it mean to "be Jewish"? Is the process of learning Hebrew and studying Torah still a path to understanding and growth?

Becoming a B'nai Mitzvah requires a significant commitment of time and effort, as well as a commitment to a group of peers. But with that commitment comes value and growth for the individuals involved and for Beth Ami as a community. If you want to explore this possibility, please contact the office and put your name on the list. It can be an exciting adventure.

The Ladder – Journey into Mussar

Adult Education beginning

January 9, 2007

Congregation Beth Ami

Tuesdays 7-8:30 p.m., 8 sessions

Jan 9, Jan 23, Feb 13, March 13, March 27,

April 17, May 1, May 15

Join your fellow learners/seekers in an eight module course learning Mussar texts and practices. The Ladder is an introduction to the study and spiritual growth offered by Mussar, a tradition once limited to the yeshiva world.

Mussar's purpose is to help people understand the ways of the soul. The teachings guide one in overcoming the obstacles that keep one from coming into inner wholeness (shelmut), holiness (kedushah) and closeness to G-d. The goals of Mussar are suitable for and attainable by all, regardless of background.

Mussar, as the term is used in this course, refers to the teachings and methods introduced by Rabbi Yisrael Salanter.

Rabbi Salanter began the Mussar Movement in Lithuania in the 1850s, which then spread across eastern Europe and gave rise to several schools and generations of teachers. The movement is based upon a discipline dating back to the 10th century and is rooted in the Torah, where the word mussar first appears.

For information contact the office or Maralee Joseph 996-6824. Fee \$40 includes a syllabus and will be used to support future speakers. RSVP form on page 15.

Congregant and Course Leader Maralee Joseph has studied Mussar for six years with Alan Morinis, author of "Climbing Jacob's Ladder" and founder of the Mussar Institute. She attends annual "kallahs" where master teachers from Israel and the American Orthodox world gather to provide a unique opportunity for study. She receives a daily email from the Salant Foundation with a brief Mussar lesson based on the Tanakh.



MEMO FROM JERUSALEM Bob Raful

Macro vs. micro

While this is being written after our return from Jerusalem, I want to share notes I took after discussing his Sukkot drash with Rabbi Adam Frank, our rabbi at the “Agron St. Shul.”

Rabbi Frank challenged us to make Masorti (Conservative) Judaism a caring community, to strive for a halachic lifestyle and to become activists in an effort to make the Israeli reality come closer to our “Ideal” mission: Israel is to be a Light Unto the Nations; with key tenets – morality, ethics, justice and compassion.

He then went on to compare what he called the “Macro Vision” with the “Micro Reality.” He summarized his “roadmap” this way:

MACRO VISION-Israel as the nation which gave the Torah to the world; the beauty of Shabbat observance; recognition by most of the Western world as the source of ethical and moral high ground; leadership in science and technology; a number of “giants” of religious philosophy; a reputation for rushing to the aid of disaster victims; and Israel as a geographical wonderland—from the water to the mountains, from the desert to the snow.

MICRO REALITY-Political corruption; moral scandals; growing criminal underworld; light punishment for abusive men against women and children; traffic in women in sex trade; killing on the highways; unequal treatment of immigrants; silence on international tragedies like Darfur; some military incompetence; police turning a blind eye to some crime; disparity between rich and poor.

While he did not use the term, Social Action, he issued a clear call for our group to start doing SOMETHING to change the Micro into the Macro.

I must say that except for a few “not our problem” remarks, the group’s reaction was a healthy enthusiasm. There was an expected positive response from our younger members (Conservative Yeshiva and rabbinical students, who have started to form a younger shul community). But it was heartening to get that same positive reaction from many of our older, long time members, most residents from America, Great Britain and South Africa.

Hopefully, the weekly shul bulletin will give us progress reports. It won’t happen overnight. But we have to make that first step.

(Note – I saved these notes because one could change the name “Israel” and insert “Sonoma County” and the challenge and call for action is just as valid.)

Ask Rabbi Schlesinger.

NURSERY SCHOOL NEWS

Lenore Monsour

The Nursery School Round Up Dinner & Dance on November 5 was a fabulous success. We kicked up our heels with the expert square dance calling of Steve Minkin. We feasted on the scrumptious spread of Tex-Mex vittles by A La Heart Catering – complimented beautifully by decorated dessert cookies created by Whisked Away. Our eyes danced from the gorgeous jewelry and fine art to the tempting bid sheets of the silent auction. Our parents were happy to have an evening to meet other parents and friends of the Nursery School at this fun social event. To those who could not attend, thank you for generously donating to our program.

The Beth Ami Community Nursery School teachers and staff are deeply appreciative of the hard work and commitment that the Fundraising Committee invested for the good of our community. Our heartfelt thanks go out to the Chairwoman of the 2006 Round Up, **Leticia Sotelo**, who tirelessly held the reins and brought the herd to market. She even baked fabulous pastries for each and every meeting! Thank you to **Lynne Richichi** who organized the selection of tasty dishes that were catered at the event, and to **Ruth Turner** whose expertise and support was greatly appreciated. Again, thank you to the **Friedman family** whose Friedman Center provides the Nursery School with their perfect event facility each year. We want to thank **Karen Gould, Wendy Friesner** and **Eric Mossman** whose behind-the-scenes efforts supported our fundraiser. Thank you **Guevara Rowand** and **Barbara Schneider** for your keen ability and amazing talent contacting so many folks for donations, including the beer from the Lagunitas Brewing Co. Thank you **Nikki Burke, Pamela Loman, Staci Leipsic, Michelle Kay, Lisa Mott, Rachel Munn, Marcy Broadwell, Donna Hirth, and Jane Paul** for help with invitations, advertising, printing, and program planning, as well as greeting our guests. Special recognition goes to **Diana Majumdar** and her lovely mother, **Yevgenia Zaharjan**, for their very talented art design and decorating. Yevgenia sewed table toppers and runners which added a wonderful Western accent to the event. We are also grateful to **Jillian Navarro** who facilitated the donation of eight cases of wine from Beam Estates.

We appreciate the contributions from the following artists who donated 25% of their sales and created a quality art show: Kathy Byrne, assisted by John Byrne; Mary Ruggles and Donna McCulloch who brought their beautiful watercolors; Diana Majumdar, who donated her time painting and designing for the show, as well as selling her oil paintings; jewelers Phoebe Shraer & Grant Weeden, assisted by Cathy Signorelli; Caraucci, represented by Charla Barnathan and assisted by Emily Monsour and Carrie Wickman-Dorn; April Greer assisted by Jordie Greer; and fabric creations and children’s clothes by Yevgenia Zaharyan. We are grateful for the work of our cashiers, **Jim Monsour** and **Karl Joost** who made collecting money a smooth affair.

To all of the friends of the Nursery School, thank you for your continued support of our wonderful school!



GENEROUS CONTRIBUTIONS TO OUR CONGREGATION

The next time you are looking for a meaningful way to celebrate a joyous occasion, remember a loved one, or comfort a mourner, please consider a donation to Congregation Beth Ami. When you make a gift, a card is sent to the honoree or the family and your donation is proudly acknowledged in the *Shofar*. The minimum donation for each occasion is \$7.50.

Congregation Beth Ami truly appreciates your support.

General Fund

In honor of Mia Rose, our first child
Rael & Debbie Bernstein
In memory of Joyce H. Bressick
Sanford Bressick
In honor of my aliyah
Marilyn Graff Reiss
A thoughtful donation
Gary Herzberg
In memory of David Katzel
Bud & Jackie Katzel
In memory of my husband, Walter Kuttner.
With thanks to Congregation Beth Ami for
your friendship.
Sherrill Kuttner
In memory of my husband, Oliver Margolin
Hella Margolin
In memory of Herman Hecht
John Metz
In honor of Vivian Frye - hope you get well
soon
In honor of Nathaniel Morrison - hurry up
and get well
Speedy recovery to Bud Katzel
In memory of Lindsay Kvam's nephew
Edith Newman
In honor of Ross Jones & family for
suggesting the donation
James Palmieri
In memory of Mark Barry Perlman
Sydney & Bernice Perlman
A thoughtful donation
John & Rhonda Rosenbach
In memory of Anne Ludin, my sister
Lester & Rosalie Schweit
Wishing a complete recovery for Howard
Moss
In memory of Delphine Rubin's mother
Wishing a complete recovery for Vivian
Frye
Ed & Nancy Sherman
A generous donation
Goldie & Martin Sosnick
In memory of Helene Hochberg Senzer,
Adrea's mother
The Moss Family

Library Fund

In honor of Richard Kahn - Happy
Birthday!
Rachel Kahn
In memory of my beloved husband,
Eugene Streitfield
Ricki Streitfield

Malk Fund

Happy Anniversary to Phyllis & Everett
Shapiro
Edith Newman
In memory of Max Malk, father of Phyllis
Phyllis & Everett Shapiro

Nursery School Fund

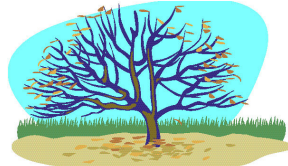
In honor of Karen Gould for her wonderful
graphic design skills
Staci & John Leptic
In memory of Sydney Lorraine Paul
Jane Paul & Ross Jones

Simcha Board Tree of Life

Honor thy father, and thy
mother...also thy aunt, uncle,
cousin, child, best friend, teacher
with an engraved leaf on our
Simcha Board commemorating any
joyous occasion, bestowal of an
honor, or cause for thanksgiving.

Leaf \$200
Small Stones \$1000
Large Stones \$2500

We also provide the opportunity for
you to memorialize loved ones of
our Yahrzeit Board.
A plaque is \$250.



Rabbi's Discretionary Fund

In memory of Irving Pickar - a wonderful
guy
Evey & Lou Abramowitz
In memory of my husband, Lev Bakman
Sheyna Bakman
In memory of Paul Benko
Sandra Benko
In memory of my son, Irv
Lillian Judd & Family
In honor of Rabbi Schlesinger for
his good work
Susan Miller
In memory of Mollie Raful
Bob Raful
In memory of Bruch Vilenkaya
Malvina Tsipan

Religious School Fund

In memory of my parents,
Dora & Jack Schiffman
Bernice Fox
A generous donation
Mark Rosen

Zittin Fund

In memory of Esther Zittin
Charlene Bornstein

INVITATIONS

Beth Ami Gift Shop
Stop by or call to see
albums of beautiful
invitations
for all occasions.



Rosalie Schweit
527-9001
or
Elaine Golemb
539-8084



DECEMBER YAHRZEITS

Secular dates correspond to Hebrew date of death
Observance of yahrzeit begins at sundown the previous day
All yahrzeits observed at Beth Ami



Announced on December 1 & 2

December 3 Howard Blau
Father of Shari Kafton
December 3 Miriam Malk
Mother of Phyllis Shapiro
December 3 Shirley Tenser
Grandmother of Val Kreger and
Mother of Dorothy Marder
December 3 Isadore Wiesenthal
Father of Natalie Friedman
December 4 Rosa Leah Bas Natan
Mother of Evelyn Gurevitch
December 4 Dr. Joaquin Boadella
Father of Lillian Shelan
December 4 Jennie Goldberg
Mother of Betty Franks
December 5 Jacob Goldman
Father of Ethel Schy
December 6 Margaret Berg
Mother of Dr. Werner Berg
December 6 Leonard Dresser
Husband of Helen Dresser
December 7 Stanley Kolman
Father of Bruce Kolman
December 7 Raymond Nett
Father of Stephen Nett
December 7 Abraham Schwaber
Father of Fredrika Gross
December 7 Alma Shapiro
Mother of Raynore Paule
December 9 George D. Kaplan
Father of Rhonda Rosenbach

Announced on December 8 & 9

December 10 Harry Friedman
Grandfather of Jennifer Schilling
December 11 Nathan Elbaum
Father of Debbie Weiss
December 11 Frances Ross
Mother of Stuart Ross
December 12 Ronald I. Friedman
First Husband of Dr. Jeanne Crump
December 13 Esther Mazner
Mother of Martin Mazner
December 13 Pearl Monoson
Mother of Rosalie Schweit
December 16 Noah Minuskin
Father of Joseph Minuskin

Announced on December 15 & 16

December 17 Mary Minuskin
Mother of Joseph Minuskin
December 18 Patrick O'Brien
Husband of Norma O'Brien
December 20 David Altaras
Father of Ety Dranow
December 22 Abraham Hasinsky
Father of Helen Hasin
December 22 Marcus Klepper
Grandfather of Judith Huff
December 23 Norman Mann
Father of Anne Mann

Announced on December 22 & 23

December 24 Rose Kovar
Grandmother of Dr. Gary Herzberg
December 25 David Rostov
Husband of Tova Rostov
December 25 Isaac Wallcave
Father of Lawrence Wallcave
December 27 Rachel Penkovich
Stepmother of Sarah Tyutinman
December 27 Miriam Trepp
Wife of Rabbi Leo Trepp

Announced on December 29 & 30

January 1 Dean Fleming
Father of Andy Fleming
January 3 Goda Tyutinman
Mother of Adolf Tyutinman
January 6 William Friedman
Grandfather of Joslyn Metzger
January 6 Dorothy Goldberg Murov
Sister of Betty Franks
January 6 Ruth Schwartz Susnow
Mother of Nancy Fleming

December Birthdays

1 Susan Brown
2 Carol Appel
5 Ethan Glaubiger
5 Carol Zeidman
7 Barbara Chadwick
8 Julie Feingold
8 Ronald Shelan
10 Steven Rose
10 Ronit Sepulveda
13 Colleen Rose
14 Herb Brosbe
14 Michael Kupperberg
14 Mark Epstein
16 Michelle Glaubiger
16 Candice Mann
19 Sheyna Bakman
19 Bruce Kolman
19 Marlene Lowenthal
19 Carolyn Metz
19 Dan Pleasant
19 Patricia Sherman
20 Stanley Feingold
20 Lenore Monsour
21 Jerry Zenick
21 Jonathan Cohen
23 Jill Goldberg
24 Natalie Friedman
25 Doris Langer
26 Joan Lubar
27 Fredrika Gross
27 Heidi Harmon
27 Lindsay Kvam
28 Jo Epstein
29 Louis Menachof
29 Marilyn Sommer
30 Deborah Hight
31 Eileen Tenn



December Anniversaries

5 William & Susie Friedman
7 Ben & Connie Goldman
9 Iosef & Marina Voulfson
10 Herb & Ellen Brosbe
18 Ronald & Lillian Shelan
21 Louis & Evey Abramowitz
23 Howard & Adrea Moss
23 Joe & Eileen Tenn
24 Jeffrey & Ety Dranow

**Or Ami Religious School
at Congregation Beth Ami
3rd & 4th Grade Mitzvah Project
The Interfaith Shelter Network**

Dear Congregants and Community,

Hello, we are the 3rd and 4th grade class of Or Ami Religious School at Congregation Beth Ami, and we are collecting supplies for the Transitional Housing Project (within the Interfaith Shelter Network) for previously homeless people. We are trying to help these people have a better life. It would be great if you could help us collect items to make their lives more comfortable in their new homes. Please try to help us by donating:

- Baby & children's clothing
- Towels
- Books (for children and adults)
- Puzzles, games & toys (ages 0-12)

These things can be new or used, but in good condition and with all pieces included. Please bring them by May 6th, 2007 to room 14 or the Religious School Office at Congregation Beth Ami - 4676 Mayette Ave, Santa Rosa.

Thank you for making these people happier and for helping us with our tzadakah project.

Most Truly,
The 3rd & 4th Grade Class

Kehillah TEENS

Jewish community-wide teen
(8th-12th grade) program
combines dinner, socializing
and a lively discussion of
Jewish ideals and ethics.

Kids who say no to everything
say yes to Kehillah.

Led by Rick Concoff

Contact the Beth Ami office
360-3000
for more information.

DANIELS CHAPEL of the ROSES FUNERAL HOME

**Serving Sonoma County since 1875
Family Owned and Operated
Honoring all Jewish Traditions**

Orthodox Caskets and Supplies – Tahara Service Facilities
Traditional and Memorial Services – Shipping Services to
& from our area – Pre-Planning/Pre-Funding Plans Available

Telephone: 525-3730
Fax: 525-3735

The Daniels Family: William, Patricia, Wesley, Carol & Aimee and staff
are available for arrangements seven days a week.

1225 Sonoma Avenue, Santa Rosa

CA Lic.: FD-209

CA Lic.: CR-92

Jewish Community Events

Ask JCI & R

Nun, gimel, hey, shin! Let the magic of Chanukah begin!
For information about Chanukah and connecting to Jewish life, call JCI&R 415-777-4545 or toll-free 877-777-JCIR (5247) or e-mail to JewishNfo@sfjcf.org
Jewish Community Information and Referral is a service of the Jewish Community Federation of San Francisco, Marin, Sonoma, and the Peninsula. Please visit our websites www.sfjcf.org and www.jholidays.org

Santa Rosa Chapter of Hadassah

Catered Hanukkah Luncheon & Entertainment

Wednesday, December 6, 11:30 a.m.

Congregation Beth Ami Social Hall

RSVP Ethel Keser 833-2611 or Betty Kale 542-3202

Holiday Outreach at Chanukah!

Help isolated seniors and people with disabilities feel the joy of the holiday season. For the children: Help decorate bags for seniors (call for dates and times). Volunteer dates for assembly of gift bags will be **Dec. 11**. Pick up dates for delivery of bags are **Dec. 12, 13, and 14**. For more information or to volunteer to assemble and/or deliver please contact Jeri Phillips, Volunteer Coordinator at **571-8131 ext 202** or at JeriP@jfcfs.org.

Community Yom Hashoah Commemoration 2007

April 15, 2007, 2 p.m., Friedman Events Center

The annual Community Yom Hashoah Commemoration will again remember those who perished in the Shoah with moving rituals of candlelighting, prayers, music, and personal testimonials. In addition, the Commemoration will place special emphasis on the heroism of survivors in "rebuilding their lives," the theme of the 2007 program. What did it take to emerge from the Nazi hells and find the strength, faith, self-esteem and courage to live again and rebuild one's life?

To impart the inspiring stories of rebuilding and renewal, the program will blend live Sonoma County survivors and filmed photographic portraits of survivors in a DVD. The DVD, "Multiply by Six Million," is a creation of photographer Evvy Eisen. Ms. Eisen's collection of survivor portraits and biographies is part of the permanent archives of the U.S. Holocaust Memorial in Washington and the Simon Wiesenthal Center in Los Angeles.

Tzaddikim 2nd Annual Bingo Night

Saturday, Jan. 27

Fun for all ages

5:30 dinner, \$3 per person

Bingo, Bake Sale & Silent Auction

\$5 per card, \$12 for 3 cards, \$20 for 5 cards

Kids 12 and under must be accompanied by an adult

Barbara Rosenthal, 838-8853

All proceeds go toward programming and scholarships to support Tzaddikim..

Friendship Circle Annual Chanukah Party

Monday, December 11

Congregation Beth Ami Social Hall

Shopping • Candle-lighting • Buffet Lunch with LATKE, of course!

Entertainment: Inge Hoogerhuis and Ken French perform a set of jazz standards from the 30's and 40's.

The fee is \$8.00 for members and \$10 for non-members for this extra special event which includes lunch and dessert. Payment is accepted at the door. Reservations are required by December 6 (so we shouldn't run out of latkes). Call Barbara Scharf at the JCC, Friendship Circle office 528-1182.

For more information on two events below please call Dena at the JCC office, 528-4222; visit the JCC website at jccsoco.org; or email Dr. Sheila Katz at drkatzmeow@pacbell.net.

JCC Sonoma County

3rd Annual Jewish Meditation Retreat

December 15-17, 2006

Camp Newman, Santa Rosa

Chanukat HaNefesh: A Re-Dedication to Our Selves

With Rabbi Franzel, our wonderful Rabbi George Schlesinger, other local rabbis, teachers, musicians, and each other, we will use meditation and chant to reach the Divine point of light within us all, remembering who we really are.



Orot Ha'rav: The Chanukah Lights of Rav Kook

With Rabbi Itzhak

Tuesday, December 19, 7-9 p.m.,

Congregation Ner Shalom, Cotati

"Grant us the light of Your revelation,
Satisfy our thirst for Your light,
Illuminate us with Your light..."

Join us this Chanukah as we kindle our menorahs together and bask in their radiance as Rabbi Itzhak shares the mystical poetry and teachings of Rav Kook, the High Priest of Israel.

Rabbi Itzhak Marmorstein teaches the theology of Rav Kook, Ophanim and Kabbalah in various settings. He is the author of *MILA YOMIT: The Torah, Word By Word*.

Suggested donation \$10-\$18; all are welcome-no one turned away for lack of funds.

JEWISH COMMUNITY CONTACTS

Hadassah , ROSE ANN PREMI	537-9208
Hillel , DAVID RUBINSTEIN	795-5464
Jewish Community Federation EVA SELIGMAN-KENNARD	568-6207
JNF-Trees in Israel , SHEVI POSMAN	535-8805
Jewish Community Free Clinic , JOHN SHEARER	792-1932
Jewish Community Info & Referral JUDY MUSANTE	1-877/777-5247
Jewish Family & Children's Services DIANA KLEIN	571-8131
Jewish Community Center DANIEL Y. HARRIS, M. DIV., EXECUTIVE DIRECTOR DANIELYH@JCCSOCO.ORG DENA PEACOCK, EXECUTIVE ASSISTANT DENAP@JCCSOCO.ORG BARBARA SCHARF, FRIENDSHIP CIRCLE DIRECTOR BARBARAS@JCCSOCO.ORG ELLY COHEN, FC OUTREACH COORDINATOR SHIRLEY KLAPOW, FILM SERIES DIRECTOR AARON SCHILLER, CAMP CHAI DIRECTOR	528-4222 528-1182 528-1476 526-5538 526-5581



earth
in
upheaval
e. i. u., inc.

for the service
and repair
of fine foreign automobiles

an unusual name
with
unusual excellence

established 1970

specializing in:
MERCEDES BENZ
BMW
AUDI
VOLVO
SAAB
JAPANESE
S.U.V.s

especially qualified in:
FUEL INJECTION
DRIVEABILITY
ELECTRICAL
DIAGNOSTICS
EMMISSIONS
AIR CONDITIONING

CHASSIS DYNAMOMETER

10 minutes from Santa Rosa
at

198 HIGH STREET
SEBASTOPOL, CA 95472

Open Monday - Saturday

rental cars available

Richard Kahn (707) 823-3777



B. Leena Newcomb
Photographer

Black & White Portraiture
Intimate Weddings
B'nei Mitzvahs

www.sonic.net/~blee
707 548 4817



BERNSTEIN
ORTHODONTICS
ADVANCED ORTHODONTICS FOR CHILDREN AND ADULTS

Rael Bernstein, D.D.S., M.S. INC.

(707) 575-0600
515 FARMERS LANE
SANTA ROSA, CA 95405
FAX (707) 575-5375

(707) 836-8360
8908 LAKEWOOD DR.
WINDSOR, CA 95405
www.bernsteinorthodontics.com

NORTH BAY BEHAVIORAL HEALTH, INC.

JOHN LEIPSIC, MD & ASSOCIATES

THE POWER OF INTEGRATED TREATMENT FOR KIDS, TEENS AND FAMILIES

Psychiatric evaluation, medication management and
psychological testing

Psychotherapy for children, adolescents and adults

Experienced and competent clinicians



Intake Information - 542-8979
1421 Guerneville Road, Suite 114
Santa Rosa, CA 95403
www.nbbhealth.com

Since 1956



Specializing in Wide Widths & Large Sizes

2255 Cleveland Avenue
Santa Rosa, CA 95403
(707) 546-1083

MON - SAT 9-6
THUR 9-8
CLOSED SUNDAYS



Sonoma Cutlery



FAMILY OWNED & OPERATED FOR 26 YEARS

The Best Price in Town on
GERMAN FORGED CUTLERY
Always 20% - 45% off
& **FREE** Sharpening for life!

The Largest knife Store in California
Over 3000 knives in stock

Hunting, Fishing, Camping,
Swiss Army, Buck, Case, Gerber,
& the finest kitchen cutlery in the world!

• WUSTHOF • SONOMA CUTLERY
• HENCKELS • MESSERMEISTER

www.SonomaCutlery.com

(707) 542-6433

In The Coddington Mall

*See store for Details

Simka



Klezmer and café music for any event

Leta Davis, Bandleader

(707) 996-5233

Leta@artisanknobs.com

David Ballo (707) 576-0612

Yaakov Mossman

P.O. Box 2791
Santa Rosa, Ca 95405
707 526 1559
866 890 4091 fax
mytaxman@sonic.net

ecm bookkeeping services

helping you make dollars by making sense of the numbers

Tax preparation. QuickBooks. Consulting.

Music for Your
Special Occasions

*Zim
Zum*



Contact
Rose or Jon Batzdorff
jon@sierraortho.com

תזמז
(707) 539-7051

Business Portraits • Events • Commercial

Owen Scott Shirwo

Photographer

707-539-3940

macowen@sbcglobal.net

Web Site: www.photoshelter.com/user/ossphotos



Jeanne L. Crump, D.O.

Osteopathic Manipulative Therapy

1211 College Ave. Telephone: 707-544-4334
Santa Rosa, CA 95404-3907 Fax: 707-544-9165

Earnings Devoted to Philanthropy

SINAI MEMORIAL CHAPEL CHEVRA KADISHA

1501 Divisadero Street
San Francisco, CA 94115
(415) 921-3636
FD 262

www.sinaichapel.org

3415 Mt. Diablo Blvd.
Lafayette, CA 94549
(925) 962-3636
FD 1523

pre-need funeral arrangements available
Gene B. Kaufman, Executive Director



1900 Franklin Avenue, Santa Rosa

Every life is worth loving and remembering ~ always...

Dedicated lawns and services for Beth Ami families.

Ask us how to secure the price of cemetery property
with pre-need planning. Call today ~ **542-1580**

Santa Rosa Mortuary

Eggen & Lance Chapel

1540 Mendocino Avenue, Santa Rosa ~ **545-3747**

Honoring your traditions with orthodox caskets,
burial containers and Tahara Services.

Concerned about the cost of funeral services?

Don't be. Pre-need planning lets you control costs by
protecting today's prices. Compare and save.

COA 107 CR 171

FD 240 & 1779

CONGREGATION BETH AMI RSVP FORM

1. Check the boxes next to the events/classes you are interested in attending.

2. Mail/Bring this form with payment to Beth Ami, 4676 Mayette Avenue, Santa Rosa, CA 95405

Name: _____

Phone: _____

☐ **Shabbat Dinner**

Friday, December 1

6:00 p.m. Dinner

7:30 p.m. Family Shabbat Services

8:30 p.m. Oneg and Israeli Dancing and music
by Zim Zum

Adult dinners @ \$12 each = _____

Youth (6-12) dinners @ \$7 each = _____

Support a young family who could not otherwise
attend. Donation: _____

Amount enclosed for this event _____

--RVSP BY Tues., Nov. 28, 5 p.m. to avoid late fee--

☐ **CHILDREN'S CHANUKAH CRAFTS AND & NOSH**

Sunday, December 10, 12 - 1:30 p.m.

\$3 per child for the first three craft projects,

\$1 for each additional project.

Total # of children attending _____

Amount enclosed for this event _____

☐ **SISTERHOOD HOLIDAY BRUNCH & ART SUPPLY COLLECTION**

Sunday, December 17, 10 a.m.

\$7.50 per ticket, Buy 1 get 1 free!

Total # of people attending _____

of free admissions _____

of paid admissions @ \$7.50 each _____

Amount enclosed for this event _____

☐ **COMMUNITY CHANUKAH PARTY**

Tuesday, December 19, 6-8 p.m.

Adult tickets @ \$12 per person = _____

Youth (6-12) tickets @ \$6 per person = _____

Amount enclosed for this event _____

☐ **Adult B'nai Mitzvah Class**

Check the box if you'd like to attend an orienta-
tion meeting.

☐ **The Ladder - Journey To Mussar**

\$40.00, Class begins January 9, 2007, 8 sessions,
More information on page 7.

Congregation Beth Ami Judaica Gift Shop

GIFTS & HANUKKAH ITEMS

Kosher jams, jellies,
chocolate-covered cherries,

Hanukkah books, games, decorations and more!



Visit during our special Chanukah shopping days

Extended December Hours

Monday/Wednesday, 11 a.m.-1 p.m.

Tuesday/Thursday, 3-5 p.m.

Sunday, 10 a.m.-12:30 p.m.

December 4, 6, 11, 13

December 5, 7, 12, 14, 19, 21

December 3, 10, 17



Congregation Beth Ami

4676 MAYETTE AVENUE, SANTA ROSA, CA 95405

DATED INFORMATION.

PLEASE DO NOT
DELAY DELIVERY.

Non-Profit Org.
U.S. Postage
PAID
Permit No. 185
Santa Rosa, CA



**Rabbi & Paula Schlesinger
will be on Sabbatical
December 24 - February 2**

December Services

Friday Evening, December 1

(Candle Lighting: 4:32 p.m.)

6:00 p.m. Family Shabbat Dinner

7:30 p.m. Shabbat Evening Services

Saturday, December 2 • 11 Kislev

9:30 a.m. Shabbat Vayetze Services

Jacob Whiteley, son of Dr. Maralee Joseph
and Dr. Steven Whiteley,

will be called to the Torah as a Bar Mitzvah

Hosted Kiddush Luncheon after services

(Saturday Havdalah: 5:33 p.m.)

Friday Evening, December 8

(Candle Lighting: 4:32 p.m.)

7:30 p.m. Shabbat Evening Services

Saturday, December 9 • 18 Kislev

9:30 a.m. Shabbat Vayishlach Services

Library Shabbat

Potluck lunch following services

(Saturday Havdalah: 5:33 p.m.)

Friday Evening, December 15

(Candle Lighting: 4:33 p.m.)

7:30 p.m. Shabbat Evening Services

(1st Night of Chanukah)

Saturday, December 16 • 25 Kislev

9:30 a.m. Shabbat Vayeshev Services

10:00 a.m. Tot Shabbat

Potluck lunch following services

(Saturday Havdalah: 5:35 p.m.)

Friday Evening, December 22

(Candle Lighting: 4:36 p.m.)

7:30 p.m. Erev Shabbat Services

(8th Night of Chanukah)

Saturday, December 23 • 2 Tevet

9:30 a.m. Shabbat Mitzetz Services

Potluck lunch following services

(Saturday Havdalah: 5:38 p.m.)

Friday Evening, December 29

(Candle Lighting: 4:40 p.m.)

7:30 p.m. Erev Shabbat Services

Saturday, December 30 • 9 Tevet

9:30 a.m. Shabbat Vayigash Services

Potluck lunch following services

(Saturday Havdalah: 5:43 p.m.)

Weekday minyan: Sundays, 8:30 a.m.,
Mondays & Thursdays, 7:30 a.m.