



CONGREGATION  
Beth Ami

*Shofar*

4676 MAYETTE AVENUE, SANTA ROSA, CALIFORNIA 95405

707-360-3000

OCTOBER/NOVEMBER 2015

5776

**HAPPY SUKKOT,**



**ONE AND ALL!**

## Congregation Beth Ami

4676 Mayette Avenue  
Santa Rosa, CA 95405

**Telephone** 707/360-3000

**Fax** 707/360-3003

**Email** [office@BethAmiSR.org](mailto:office@BethAmiSR.org)

**Website** [BethAmiSR.org](http://BethAmiSR.org)



Please "like" us at

[facebook.com/CongregationBethAmi](https://facebook.com/CongregationBethAmi)

## Office, Library, and Gift Shop Hours

Mon.–Thurs. 10 a.m.–4:30 p.m.

Fri. 10 a.m.–2 p.m.

## Mission Statement

Congregation Beth Ami enriches our lives, transforms our hearts, helps heal the world and sustains our Jewish heritage. We are deeply rooted in Jewish tradition and welcome all to our community through celebration, learning, education, and prayer.

### Personnel

#### Rabbi Mordecai Miller

707-889-6905  
[rabbi@bethamISR.org](mailto:rabbi@bethamISR.org)

#### Carolyn Metz, Executive Director

707-360-3011  
[execdirec@bethamISR.org](mailto:execdirec@bethamISR.org)

#### Elizabeth Jarlsberg, Office Manager

707-360-3000  
[office@bethamISR.org](mailto:office@bethamISR.org)

#### Diane Lennox, Bookkeeper

[bookkeeper@bethamISR.org](mailto:bookkeeper@bethamISR.org)

#### Jenny Levine-Smith Nursery School Director

707-360-3030  
[ns@bethamISR.org](mailto:ns@bethamISR.org)

#### Mandi Emery-Flynn, NS Assistant

707-360-3030  
[ns@bethamISR.org](mailto:ns@bethamISR.org)

#### Rick Concoff, JCC Teen Program

707-823-3916  
[rickc@jccsoco.org](mailto:rickc@jccsoco.org)

#### Ben and Tara Winkler, Shofar Newsletter

641-451-7076  
[newsletter@bethamISR.org](mailto:newsletter@bethamISR.org)

#### Anya Concoff Por, Director of Youth Education

707-360-3000  
[rs@bethamISR.org](mailto:rs@bethamISR.org)

#### Gabor Por, Librarian

707-360-3006  
[library@bethamISR.org](mailto:library@bethamISR.org)

#### Bonnie Boren, Gift Shop

707-360-3022  
[bonnieboren@gmail.com](mailto:bonnieboren@gmail.com)

#### Andrea Nett, Friedman Center Director

707-360-3021  
[director@friedmaneventcenter.com](mailto:director@friedmaneventcenter.com)

#### Edythe Smith, Invitations

707-538-3698

### Officers and Board of Directors, 2014–15

**Laura Alexander, President**  
[cbapresident@sonic.net](mailto:cbapresident@sonic.net), 837-8695

**Arnold Drake, Past President**  
[gidrdrake@gmail.com](mailto:gidrdrake@gmail.com), 542-1765

**Myrna Morse,  
VP of Administration**  
[mrm75@att.net](mailto:mrm75@att.net), 539-5457

**Russ Gurevitch, VP of Facilities**  
[russgurev@msn.com](mailto:russgurev@msn.com)

**Barbara Tomin,  
VP of Youth & Education**  
[btprojects@sonic.net](mailto:btprojects@sonic.net), 576-1167

**Mel Decker,  
VP of Ways and Means,**  
[meldecker5@gmail.com](mailto:meldecker5@gmail.com), 540-0614

**Barbara McGee, Treasurer**  
[barbara.mcgee@ffic.com](mailto:barbara.mcgee@ffic.com), 953-2526

**Betty Boyd, Secretary**  
[bettyboyd@informingscience.org](mailto:bettyboyd@informingscience.org),  
537-2211

### Members at Large

**Richard Kahn**  
[earthin@sonic.net](mailto:earthin@sonic.net), 217-5265

**Alan Krubiner**  
[akrubiner@msn.com](mailto:akrubiner@msn.com), 694-6239

#### Lyla Nathan

[lylanathan5@gmail.com](mailto:lylanathan5@gmail.com), 526-7438

#### Jeff Sheff,

Adult Education  
[jssheff@gmail.com](mailto:jssheff@gmail.com), 539-5346

#### Leanne Schy,

Torah/Haftarah Readings  
[leanne@sonic.net](mailto:leanne@sonic.net), 528-4874

### Members Ex Officio

Carolyn Metz, 481-3390  
Jenny Levine-Smith, 360-3030  
Anya Concoff Por, 707-360-3000  
Rabbi Miller, (314) 308-3672  
Andrea Nett, 707-360-3021

---

### Deadline for Dec. 2015/Jan. 2016 Shofar is Nov. 15

---

### Jewish Community Contacts

#### Hillel of Sonoma County

Ilana Stoelting, (707) 795-5464  
[www.sonomahillel.org](http://www.sonomahillel.org)

#### JCC, Sonoma County

Beth Goodman, 528-4222, [www.jccsoco.org](http://www.jccsoco.org)

#### Jewish Community Federation

Barbara Levinson, 568-6207, [www.sfjcf.org](http://www.sfjcf.org)

#### Jewish Community Free Clinic

Donna Waldman, 585-7780,  
[www.jewishfreeclinic.org](http://www.jewishfreeclinic.org)

#### Jewish Community Relations Council

Suzan Berns, 415/957-1551, [www.jcrc.org](http://www.jcrc.org)

#### Jewish Family & Children's Services

Diana Klein, 571-8131,  
[www.jfcs.org/sonoma-county](http://www.jfcs.org/sonoma-county)



**RABBI'S REMARKS**  
*Rabbi Mordecai Miller*  
**Sanctuary**

The cities of Sodom and Gomorrah are well known. While the Bible narrates the contemptible way in which the citizens of those towns treated Lot and his angelic guests, our Midrashic literature pursues the question still further. Just how wicked could the inhabitants be to warrant Divine destruction of these cities?

Many examples are given. One that stands out is the story of a bed that they offered anyone coming into town. It was made to a specific measure. If the newcomer was too short, they would stretch his or legs to match the size; if they were too long, they would perform an amputation to shorten them.

What lies behind this gruesome description is the intolerance displayed in their society of anyone whom they felt didn't fit the mold. The men and women of Sodom and Gomorrah simply weren't willing to trouble themselves

with adjusting their own thinking to be able to accommodate significant differences in others.

To this day, we have individuals who feel marginalized because they may not fit the general patterns of society around them. These may involve sexual preference, financial condition, or religious and cultural differences.

The message contained in this Midrash is explicit: the value of a society is linked directly to the way in which it accommodates the variety of human experience—without passing judgement over individual life choices or circumstances.

Our congregation's name, Beth Ami (House of My People), captures this spirit. At our heart is our beautiful sanctuary. As the word *sanctuary* implies, we exist so that everyone who comes under our roof can sense a spirit of Divine protection. As members of this congregations we can offer no less.

## Services at Beth Ami

Please join us for services. For additional information or to verify the times, call the office at (707) 360-3000.

### October Shabbat and other Services

**Oct. 2—6 p.m.** dinner\* and Shabbat evening service

**Oct. 3—9:30 a.m.** Shabbat morning service followed by dairy potluck

**Oct. 4—8:30 a.m.** Hoshana Rabbah morning service, last day of Sukkot  
 6:30-7 p.m. Shemini Atzeret—evening service

**Oct. 5—9:30 a.m.** Shemini Atzeret with Yiskor—morning service. **6 p.m.** Simchat Torah eve—Festive celebration

**Oct. 6—9:30 a.m.** Simchat Torah Morning service

**Oct. 9—7:30 p.m.** Shabbat evening service

**Oct. 10—9:30 a.m.** Shabbat morning service followed by dairy potluck

**Oct. 16—7:30 p.m.** Shabbat evening service

**Oct. 17—9:30 a.m.** Shabbat morning

service followed by dairy potluck

**Oct. 23—7:30 p.m.** Shabbat evening service

**Oct. 24—9:30 a.m.** Shabbat morning service followed by dairy potluck

**Oct. 30—7:30 p.m.** Shabbat evening service

**Oct. 31—9:30 a.m.** Shabbat morning service followed by dairy potluck

### November Shabbat and other Services

**Nov. 6—6 p.m.** dinner\* and Shabbat evening service

**Nov. 7—9:30 a.m.** Shabbat morning service followed by dairy potluck

**Nov. 13—7:30 p.m.** Shabbat evening service

**Nov. 14—9:30 a.m.** Shabbat morning service followed by dairy potluck

**Nov. 20—7:30 p.m.** Shabbat evening service

**Nov. 21—9:30 a.m.** Shabbat morning service: Alexandra Sepulveda Glickman's Bat Mitzvah

**Nov. 27—7:30 p.m.** Shabbat evening service

**Nov. 28—9:30 a.m.** Shabbat morning service: Joseph Elizalde's Bar Mitzvah

\*Reservations necessary by the preceding Wednesday. Call the office at (707) 360-3000 to make your reservation. Service may proceed the dinner.

### Daily Daven

#### Sundays & National Holidays—

**8:30 a.m.** Morning Minyan in the Chapel, followed by a light breakfast on the 1st and 3rd Sunday

**Mon.–Fri.—7 a.m.** Daily Daven in the Chapel except for Yom Tov (holidays)

**Sun.–Thurs.—6:30–6:50 p.m.** Daily Daven in the Chapel except for Yom Tov (holidays)



## EVENTS & ANNOUNCEMENTS

### Welcome to New Members...

Glenn & Nancy Tisman

Gayle & Abe Farkas

### Mazal Tov on the Birth of...

Esther Aronka Wolfe-Smith, granddaughter of Michelle Guttenberg & David Mazner

### Our Condolences to the Families of...

Rosalie Schweit, mother of Barbara Greensweig

### Mazal Tov to our Bat Mitzvah, Alexandra Glickman

Nov. 21, 2015

Alexandra Glickman will be called to the Torah and will celebrate her Bat Mitzvah on Saturday, November 21st, 2015. We invite the congregation to join us for this simcha. A kiddush luncheon will be served immediately following services.

### Israeli Folk Dance—

Dance circle dances to songs from Israel, and other places too—with varied speeds, moods and styles.

Israeli dancing will be taking a break in October. We'll resume in November:

**7–9:30 p.m.**

**Nov. 18; Social Hall**

**Nov. 25; Friedman Center**

**\$3 donation to Beth Ami**



#### Larry Gregg

Bujinkan Santa Rosa Dojo

Traditional Martial Arts -  
Self Defense

phone: 707 481-7370

email: [srbd@att.net](mailto:srbd@att.net)

web: [santarosabujinkan.com](http://santarosabujinkan.com)



### Farewell

August 18, 2015

#### Dear Laura, Rabbi Miller, Members of the Board of Directors and Members & Friends of Congregation Beth Ami,

It is with mixed feelings that I formally announce my retirement from the position of Executive Director of Congregation Beth Ami. I plan to remain in the position no longer than December 31, 2015, and hope to be instrumental in planning and training for the future success of the synagogue community between now and then.

It has been my pleasure and work of the heart to serve in this position during the last five and a half years. Jewish communal work has been my career path, starting as Camp Chai Director, here at Beth Ami, in 1983. Jewish communal work has provided me an opportunity to learn and grow in so many ways, and to use my skills, connections, and love of community to make this corner of the planet a better place.

I am looking forward to spending my time and energy focused on family as well as exploring aspects of this new stage of life in which I find myself: I'm excited! I look forward to working with Rabbi Miller, the Board of Directors and you to assist in the search for a new Director and make the transition as smooth as possible.

Warm regards,

Carolyn Metz

Executive Director, 2010–2015

**BINGO** at the Friedman Center  
Every Sunday  
6:45pm Doors open at 4:00 pm  
Win up to \$350 per game  
Buy-in starts at just \$15!



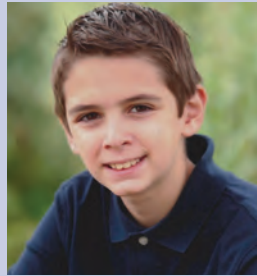
## EVENTS & ANNOUNCEMENTS

### Mazal Tov to our Bar Mitzvah, Joseph Elizalde

Nov. 28, 2015

Shalom! My name is Joseph Elizalde. I am currently a 7th-grader at Sonoma Country Day School. I will become a Bar Mitzvah on November 28, 2015. I hope you can join me and my family on this special day. For those of you who have yet to meet me, my family and I moved from the Sacramento area to Sonoma County in the summer of 2013. Since then, we have been members of Congregation Beth Ami and I have enjoyed learning the differences between our prior Reform Synagogue and the Conservative prayers at Beth Ami. Rabbi and I will co-lead the service with Cantorial Soloist Carol Gunnerson from our synagogue in the Sacramento area.

Outside of my Jewish life, I love to play on my Rubik's Cube and challenge myself to see how

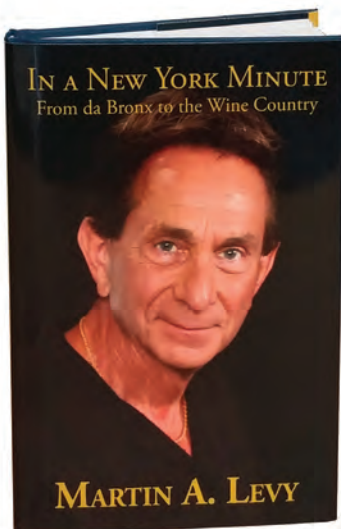


quickly I can solve it. (My current personal best time is 53 second) I am also a first-degree black belt in Tae Kwon Do and I have been playing the piano since I was five years old. I also spend a lot of time volunteering at the Green

Dog Rescue Project in Windsor, and I am excited to share more about that with you during the service. Another hobby of mine is designing and engineering virtual roller coasters on a program called NoLimits 2. I also like to play a computer game called Minecraft with my friends.

I live in Healdsburg with my mom, dad, and sixteen-year old brother Daniel as well as my dog Buster.

I look forward to celebrating with all of you!



**Martin A. Levy**

Century 21 NorthBay Alliance

BRE#00619542



*The holidays are over.*

*This might be a good time to think about selling*

**For a more PROFITABLE sale,  
call Martin Levy**

BUY or LIST with me or REFER a friend to me and I will make a **\$1000 donation** in your name to Congregation Beth Ami upon close of escrow. Please mention this ad when you call.

*Approaching 40 years*

*of Full-Time Service and Full-Time Commitment*

**If you're even considering buying or selling, call**

**707-303-3333**

**www.MartinLevy.com • martin@martinlevy.com • 707-303-3333**



## PRESIDENT'S PAGE

Laura Alexander, President

Shana Tova! As we embark on our journey of reflection and renewal during the high holidays, I hope you find peace and forgiveness.

As I reflect on my first year as President of the Board, I will admit that I am not the same President now as I was in the beginning. Just over a year ago when my journey as President of Beth Ami began, I was a lot more naïve and much less informed about the financial deficits and shortages of Beth Ami. Despite the financial challenges facing Beth Ami, I have tried to be a facilitator of change and growth to build a stronger and sustainable future for Beth Ami. Building a sustainable future for Beth Ami is imperative. In the past year, we have made significant steps towards reducing our capital campaign, addressing years of deferred building maintenance and assessing synagogue risk and security issues. With the launching of the Count Me In campaign we're making headway towards paying off our loan and building a rainy day fund for future building repairs and maintenance. Generously funded by the Friedman Center Endowment Fund, the Friedman Family has bridged the gap in Rabbi Miller's salary to offer him full time status. By creating a Sustainers Circle of donors who are committed to the financial sustainability of Beth Ami, donors are providing significant multi-year gifts which will encourage and enable growth and preservation of all aspects of the congregation; spiritual, physical, operational and programmatic.

Some changes have been less about financial endeavors and more about building community. As part of the Board goals we established last year, we created a committee to evaluate the Friday night Shabbat activities to increase participation. The Guess Who's Coming to Shabbat program was launched and we just had another successful gathering on September 11th. Everyone who has either hosted or attended a dinner has enthusiastically raved

about their experiences in sharing Shabbat in a meaningful way with new and old friends.

Part of building community also involves building leadership. I was blessed to attend training in L.A. called Sulam for Emerging Leaders. Just as the name suggests, Sulam, or *ladder*, for Emerging Leaders helps develop up and coming leaders so that they can move up the next rung of the ladder towards leadership roles in our community. We are blessed that one of the participants of Sulam, Anya Concoff Por, jumped right in and is now using her leadership skills as our new Director of Youth Education. In addition to restructuring the Religious School schedule to include a Friday night Kabbalat Shabbat service and creating a fresh curriculum, she is working with Jenny Levine, Director of the Nursery School, to connect nursery school families to Beth Ami through Beth Ami and You. Anya is also overseeing Rock'n Shabbat, USY and the post B'Nai mitzvah program. Needless to say she has a full plate but her vision for youth programming and enthusiasm for Judaism are propelling her forward and I am excited to see our youth education programs continuing to grow and change.

As I mentioned earlier, we have made significant steps towards a stronger and more sustainable future for Beth Ami both by building leadership and community, as well as financially. But we still have a long way to go and much more to accomplish! We're just barely coming up for air after surviving a tough economy where we deferred building maintenance, reduced staff salaries, cut back on programs and failed to balance budgets. Our ability to grow and change has been hampered by many years of reduced income for Beth Ami. As members of this community, if we are to continue to build a strong and sustainable future, we all need to contribute in any way we can. No amount is considered too small to contrib-



## PRESIDENT'S PAGE

*continued...*

ute. Let's keep the momentum going and join the campaign of change in our kehilla. I am appealing to each and every one of you in our community to donate and contribute to Beth Ami's continued financial stability by giving generously to our 2015 High Holiday Appeal.

Leading Beth Ami as President for the past year and continuing for the next two years would not be possible without all the love and support of my husband, Abe and two sons, Nick and Ben. I owe a huge debt of gratitude to them for sharing our family time with Beth Ami, so that I can take on leadership responsibilities. I truly feel blessed that I can serve our community in this capacity. I would also like to thank our dedicated and hardworking Board members for their commitment to our congregation. Without a strong Board, who volunteer on so many levels, we would not be the thriving and engaging congregation we are so blessed to be. I would also like recognize the numerous volunteers who contribute their time and energy as committee chairs, committee members and helpers at the many events and activities hosted by Beth Ami. I am thankful for Rabbi Mordecai's spiritual guidance and patience with me while I develop my role as President. I would also like to thank Carolyn Metz for her service as Executive Director and wish her the best in her retirement starting in January 2016.

In closing, I would like to leave you with a question, how will you be a positive force in leading a campaign of change in our kehilla? How can you help create a guiding coalition that will make this year one of newness and renewal for our community?

G'mar Hatimah Tovah-May You Be Sealed for a Good Year in the Book of Life.

### Joel Nelson

PRODUCTIONS

SOCIAL & CORPORATE EVENT PRODUCTION  
DJ'S | BANDS | SPECIALTY ENTERTAINMENT

www.joelnelson.com

### earth in upheaval e. i. u., inc.

outstanding service and repair for your vehicle

on the web at:  
earthinupheavalautorepair.com

**an unusual name with unusual excellence**

1970-2013  
Forty-Three Years Of Quality Service

We know and are equipped to work on:

Acura	Lexus	Volvo
Audi	Mazda	VW
BMW	Mercedes-Benz	Domestics
Honda	Mini	Hybrids
Hyundai	Nissan	
Infiniti	Subaru	
Kia	Toyota	

5300 Sebastopol Rd.  
Santa Rosa, CA 95407  
Open Monday - Saturday  
rental cars available  
earthin@sonic.net

Richard Kahn (707) 523-3777

**ALEF** isn't enough  
**BET** isn't tough

Study Modern Hebrew from the source with a native Israeli. All levels. The easy way. Prayers, Chanting Torah Tropes

**call: Ahuva Simon-Sa'ar**  
**545-2454**

א  
ב  
ג  
ד  
ה  
ו  
ז  
ח  
ט



# NURSERY SCHOOL NOTES

Jenny Levine-Smith  
Nursery School Director

**Shemini Atzeret: Monday, Oct. 5**

**Simchat Torah: Tuesday, Oct. 6**

**Thanksgiving: Thursday, Nov. 26**

Hello Congregation Beth Ami! We hope that you have enjoyed a wonderful High Holy Days! We had a lovely time at the nursery school. We greeted Rosh Hashanah with our Apples and Honey Social. Families joined us to learn about the holiday, sample some sweet treats, and listen to the Shofar. Children in classrooms used apples as paint brushes, compared the flavors of red, green, and golden apples, and read stories and talked about the importance of being good to each other and helping those around us.

We also had a few wonderful joint events with the Beth Ami Religious school. Our very own 4's teacher Priscilla Lowell led children in Pray and Play activities on Rosh Hashanah and Yom Kippur. She and 3's teacher Ayala Almog led stories and songs for our PJ Library Pajama Party and Family Breakfast, which was open to all in the community as well.

As a staff, we have been working with the Rabbi at staff meetings to help us find a way to make the Jewish holidays even more meaningful for our students. We've been seeking out the resonant themes from the holiday stories and brainstorming together to find developmentally appropriate ways to teach them.

On October 1, Rabbi Miller will be meeting with nursery school parents in the Sukkah for

some Judaism 101. Our families at the school come from a variety of backgrounds. We have Jewish families and non-Jewish families, families who know a lot about Judaism, and those who don't. As one of our parents said at our last parent club meeting in response to the offer of a parent class about Judaism, "I would love that! We aren't Jewish, but we embrace it, and our kids know more than we do!"

October 5 and 6 will be week two of our Yom Tov camps. While school is closed on Sukkot, Shemini Atzeret, and Simchat Torah, we will offer camps to our school children which will offer more insight into the holidays as well as provide care for our working families.

We are looking forward to many smaller community building events in October and November, helping our families connect to one another and to Beth Ami. The parent club is working on parents' nights out and play dates, and I am working together with Anya Por of the religious school to find other ways for us to work together.

*Wine Country Kosher*  
...still trendy after 3000 years

**MODERN • GOURMET • KOSHER**  
• Flavors of the Wine Country  
• International Jewish Cuisine

**Andrea Nett** **CATERING**  
707/206-8686 We specialize in B'nei Mitzvah  
winecountrykosher@sbcglobal.net

**Have Faith!**  
**Braces are only temporary...**  
*The smile you achieve will last a lifetime!*

**BERNSTEIN  
ORTHODONTICS**  
WILD & SMILEZ

Proudly Supporting Local Community and Youth Programs  
CALL (707) 575-0600 for your FREE CONSULTATION!  
Santa Rosa • Windsor • Petaluma  
[WWW.BERNSTEINBRACES.COM](http://WWW.BERNSTEINBRACES.COM)

"...the best breakfast & lunch joint around."  
Jeff Cox, Santa Rosa Magazine

**DIERK'S PARKSIDE CAFE**  
404 Santa Rosa Avenue  
Santa Rosa, CA 95404  
707/573-5955  
Mark Dierkhising and Karen Brodsky, Owners





## RELIGIOUS SCHOOL REPORT

Anya Concoff Por—Director of Youth Education

Our school year is underway. So many great events coming up!

**Save the date: 10/4**

### **Skill Building Intensive #1: Alef-what?**

A refresher in decoding and reading Hebrew.” October 4th from 10 a.m.–1 p.m. Grades 4th and up come together monthly on a Sunday to hone their Hebrew reading, Torah chanting and Tfillah leading skills. This is another way for our students to succeed—whether for catch-up if they’ve just joined us or have had to miss class, to develop select skills or to take their skills to the next step. Monthly intensives are free for enrolled CBA students *and* open for enrollment to the greater community, to foster connections for our students with other Jewish kids and to increase access to high-quality Jewish learning. November 8th, December 6th and January 4th we’ll continue practicing our reading and start learning trope for Haftarah with Patty Bernstein.

**Save the date: Monday 10/5**

### **Simchat Torah Celebration, 6 p.m.**

We are making something special for the kids to use as we dance with the Torah. They will not want to miss this festive celebration, open to all ages and the entire family.

**Save the date: 10/13**

The Tuesday class for grades 4th & up—starts meeting on October 13th. Just like on Fridays, snack is served at 3:45 and there is supervision for kids who want to come early and work on homework, from 3 p.m.

Our new Friday format is everything we’d hoped it would be! Our Religious School’s new hours, Fridays and Tuesdays, 4–6 p.m., are working well for our families and attracting new students to our school. Our fabulous new faculty and cutting-edge Shabbat immersion curriculum

are engaging our students and giving them rich, weekly Shabbat experiences. They are enjoying connecting with each other while they build their Jewish literacy and Hebrew skills. It has been oh-so-nice to sleep in on Sundays and have the day free for family togetherness and special events.

In September, we had an incredible first few weeks of school. We had a wildly successful event on Rosh Hashanna, a Play and Pray for ages 4–8. We had twenty children on Rosh Hashanna and it caused quite a stir to see us all parade into service to hear the shofar. The children had two hours of solid Jewish programming. We will definitely repeat this format for future holidays. At the time this was written, we were looking forward to our Yom Kippur Play and Pray, Family Sukkot Art Day and Pizza in the Hut. A busy month!

*Beth Ami and You*, our wonderful series for ages 2–6 will continue in November, so stay tuned! The theme this year is the Old World. We will have music, activities, stories and projects learning about our Eastern European Jewish Heritage.

Please join our group on Facebook for up to the minute announcements and event information. It is a great forum for us to discuss projects and opportunities for learning we’d like to explore. Just log into Facebook and search for *Beth Ami Youth* and request to join.

Thank you all so much for entrusting us with this leg of your child’s Jewish education. We’re pioneers in a new era of Jewish education and together we will learn, celebrate and grow as Jews. For those CBA members who do not have children in the school, there are ways to get involved and support us. My door is open—please come see me in the religious school office or email me at [rs@bethamir.org](mailto:rs@bethamir.org).



## ISRAEL FROM THE LEFT COAST

Bob Raful

We have long time friends (extended family by now) who live in Jerusalem, East Talpiot, directly next to the main road of the Arab village of Jbel Mukber, a major violence flash point. We have been exchanging email. Here are most of them:

Things have not been too peaceful on the home front. We've had several major stoning incidents (one was written up in the Jerusalem Post) and last night a fire bomb exploded outside our front door at 11 p.m. cracking our kitchen window and causing a fire. Not fun—but, thank God, no one has been injured. We're having cousins from NY for dinner tonight. I was planning to eat on the patio.

I came home from a trip to a big mess—the result of a 3 day sandstorm which left every surface in our house coated in white *and* lots of blackened patio tiles, broken glass, etc. as the result of numerous attacks of rocks and 17 molotov cocktails thrown on our house in the past 10 days. I wasn't sure which to clean up first! However, the weather has improved, we now have 24 hour security and no one was hurt, so we're very grateful. Hopefully, this is the end of the sand, the rocks and the molotov cocktails.

Thanks so much for your concern. Yes, unfortunately, things have only escalated at our

corner—3 border policeman were injured when youths attacked them with iron pipes and fire bombs. It was very upsetting. But, we now have a high fence around all our property and *lots* of policemen around. It's not a great way to live, but, for now, we have to put up with it until the situation quiets down again. Sukkot is my favorite holiday and I already invited lots of guests for dinner—3 nights in a row during Sukkot week. I just checked the fence on my way to work. It completely surrounds our property. There is no way a fire bomb can be thrown, so I think it will be fine to put up a succah. I think you were guests in our succah more than once, right?

Let's conclude with a paragraph from a recent Jerusalem Post column by another friend who was there for a Shabbat dinner—"This is how you live, with all this craziness around you all the time? How do you do it?," asked one of her guests. "You get used to it," she replied, "and luckily, nobody has ever been hurt. Does anyone want any more cake?"

### SHABBAT DINNER RSVP

#### Shabbat Dinner:

Friday, October 2

Friday, November 6

# of Beth Ami Member Adults \_\_\_@ \$18 = \_\_\_

# of Non-member Adults \_\_\_@ \$22 = \_\_\_

# of Youth (ages 6–17) \_\_\_@ \$10 = \_\_\_

# of Families \_\_\_@ \$46 = \_\_\_

#### Please return payment and forms to:

Congregation Beth Ami  
4676 Mayette Ave.  
Santa Rosa, CA 95405

Name \_\_\_\_\_

Phone \_\_\_\_\_

I want to volunteer for (indicate which event)

Total amount enclosed

Check  Visa/MC

Credit Card # \_\_\_\_\_

Expiration Date \_\_\_\_ / \_\_\_\_

Billing Zipcode \_\_\_\_\_



## GREEN COMMITTEE

*Say Hello to the Beth Ami GREEN Committee*

At their August meeting, the CBA Board of Directors officially established the Beth Ami GREEN Committee as a Board approved committee of the synagogue. The mission of the committee is to carry out Congregation Beth Ami's values of Tikkun Olam (repairing the world) and K'vod Habriyot (caring for the Earth) as well as other Jewish values, such as Ba'al Tashchit (not wasting resources) and P'kuach Nefesh (saving lives). So far twelve people have attended one or more meetings of the new committee, which is co-chaired by Myra Thomas and Tish Levee. Any member of the congregation is welcome to come to meetings, usually the 3rd Sunday of the month at 10:30 in the Multi-Purpose Room.

Currently the committee is working on ascertaining what the congregation wants in the way

of becoming a greener community and making sure that any projects undertaken will have buy-in from all the affected stakeholders.

A survey will be going out to the congregation soon to see what members of Beth Ami see as most important in greening the shul. Some suggestions so far include a community garden, a food waste and recycling program, and solar panels in the parking lot (our fragile roof cannot support them), along with educational speakers and movies. Richard Kahn, a member of the committee has been working with PG & E to convert all our lighting to LED lights at no out-of-pocket cost to CBA; he has asked that program to be included as part of the GREEN Committee.

For more information or to receive email announcements, contact us at [bethami.green@gmail.com](mailto:bethami.green@gmail.com).

**Drivers 55+ —**  
Receive a Discount on your Auto Insurance!

# Mature Driver Course

**Thurs., Oct. 29**

**Starts at 9 a.m.**

**Lunch Break 11:30–12:30**

**\$12.50**



By completing this **all day DMV approved course**, you will receive a DMV certificate to be eligible to receive an insurance discount. Instructor Craig Dill is AAA certified with 35 years of traffic safety experience. Craig will provide driver awareness strategies and answer questions relating to older & wiser drivers.

**Pre-registration required, call (707) 360-3000 or email [office@BethAmiSR.org](mailto:office@BethAmiSR.org)**

Send check (made out to Craig H. Dill) to Congregation Beth Ami, 4676 Mayette Ave., Santa Rosa, CA 95405

Hosted by Congregation Beth Ami

Graphic Design—Tara Winkler Graphics • [TaraWinklerGraphics.com](http://TaraWinklerGraphics.com)



## THE KITCHEN CORNER

Jeffrey & Janet Stein-Larson (Co-Chairs)

### Donations to the CBA Kitchen

We have a lot of *Thank You's* to make to our CBA Community.

Our potlucks have been fantastic thanks to you. Members make food in the CBA kitchen to share and members bring foods to be used for our Shabbat potlucks and onegs. We have had potlucks ranging from 40–100 people, and we couldn't have done it without your generosity.

We also have been a recipient of a new wall clock and a new scale thanks to Ahuva.

We thank you all, you help to make our CBA community (and tummies) happier!

### Simple Ideas of Foods to Bring for our Synagogue Potlucks

We have been requested to provide ideas of what to bring to the potlucks or onegs that are simple to do.

The easiest is to find kosher packaged foods (looking for the kosher symbol). Just bring the unopened packages for the potluck. Our mashgiach will double check (those symbols get smaller & sneakier every year), and we'll plate and use them (unless we have already open or older packages, then we use the older first and save the newer for next time). Pick what best fits your budget. There are kosher packages of cheeses, yoghurt, milk, bread, crackers, chips, cookies, cakes, cans of tuna fish, sprats, sardines, kippers, jars of herring, salad dressings, applesauce, juices, juice drinks and lots more.

A note on cheeses; domestic cheeses that are not processed are okay without a Kosher Symbol (this is okay per Rabbi Miller and by the USJC movement see: <http://www.uscj.org/JewishLivingandLearning/Kashrut/default.aspx>). Again, they should be in the original sealed packaging. Imported cheeses need to have the Kosher Symbol.

How's that for simple & easy?

The next easiest is simple salads. If you want to bring salads, keep them simple with raw vegetables and raw fruits (sorry, no cooking at home

allowed). Avoid croutons, dried noodles, and processed nuts (whole raw unprocessed nuts are okay), unless you find kosher products, then, just bring them in the original sealed package so we can verify, and then add them to your salad before serving.

If you want more ideas of what to bring, just check out the latest Food and Potluck Guidelines. Of course, feel free to ask and share ideas. And if it can't be done in your home, think about making and sharing your delights in the CBA Kitchen.

### Safety in the CBA Kitchen

We are a social group, especially when it comes to cooking; however, anyone who has worked in a kitchen knows what hazards may occur while working there; and they know that the possibility of accidents increases with more distractions.

Because we want to make certain that everyone in the CBA kitchen are kept safe from accidents, please use the main doors to the entrance hall as your entry and exit to Social Hall & Sanctuary, and please do not use the kitchen door to the parking lot as an easy exit or entryway.

### Broiling.

As of now, our Beth Ami potluck guidelines allow baking cakes and cookies in an oven which hasn't been used exclusively for kosher items, does this include broiling?

Several factors are involved which can affect questions of Kashrut:

1. Generally the heat source for a baking oven comes from the bottom of the oven, whereas in broiling, the heat source comes from the top of the oven.
2. Even more importantly, the temperatures involved in baking are usually cooler than those used for broiling.
3. Broiling is used most frequently for meat and poultry, which means that the utensils

involved are affected if the meat is not kosher to begin with. According to the principles of kashrut utensils which may be kashered (for example metal pans) can only be kashered at the same or higher temperature with which they are used. For example, a broiling pan would have to be brought to red heat in order to purge it of any non-kosher food it would have absorbed in the process of broiling.

4. Regular baked good such as (un-iced) cakes and cookies have been acceptable under the pot-luck guidelines since it is generally assumed that the utensils used in baking are used solely for that purpose. In addition, the assumption is made that the ingredients in the vast majority of cakes and cookies don't pose a problem with regards to kashrut.
5. Recently, it was decided to permit icing to be used for icing cakes and cookies made in a dedicated saucepan - or similar utensil - that was never used for anything other than kosher items.
6. Since broiling involves pans that are used in the preparation of meat items, such pans and utensils would not be usable for items to be brought in the synagogue.
7. In addition, the high heat required in the course of broiling adds another dimension to the question of the kashrut of the item.

However, in a case where the broiling method is being used at relatively low temperature and all ingredients are kosher—such as for melting cheese on fruit; and where the pan and other utensils are used for regular baking; such items will be judged on a case to case basis until the Kitchen Committee has the opportunity to adopt a general policy regarding broiling.



## Buy Your Thanksgiving & Pre-Chanukah Groceries While Supporting Beth Ami!

Supporters of eScrip earned over \$1200 for Beth Ami from January–July 2015. This generous donation was achieved by the efforts of our supporters doing everyday shopping—thank you!

As you may know Safeway & Von's are no longer participating in the eScrip program as of August 1, 2015. To cushion the impact, Safeway

is contributing 95% of our 2014 earnings to us, spread out over 4 payments during the 2015/2016 fiscal year (\$1086 total). Since Safeway contributions have been about half of our overall eScrip earnings, this will impact CBA's budget. So, what can we do?



- Shop at other eScrip merchants: Oliver's Markets in Santa Rosa or Cotati, Fircrest Market in Sebastopol, Glen Ellen Village Market, Sonoma Market, Mollie Stones Markets, Petaluma Market, Scotty's Market, Molsberry Market. They all require a separate store Community Card linked up with the Beth Ami name and ID#136921119. Just ask at the store about how to get a card.
- Shop online at: <https://shopping.escrip.com> or by joining eScripdining at: <http://escrip.reward-network.com> and eating out.
- Recruit more supporters: anyone can participate in eScrip and contribute; you do not have to be a CBA member & you do not have to live in Sonoma County. Invite your friends & relative to join us! Any questions, contact Nancy Sherman at (707)538-9388 or [nancysherman06@gmail.com](mailto:nancysherman06@gmail.com).



# ISRAEL FAIR

A few facts: The Israel Fair took place on Sunday, August 30, 2015 at The Friedman Center and Beth Ami. It was organized by The Sonoma County Israel Committee (not just Beth Ami). Attendance was over 115. Ravit Baer (in white and black polka dot dress in group photo) is the Deputy Consul General of Israel in San Francisco







## GENEROUS CONTRIBUTIONS TO OUR CONGREGATION

The next time you are looking for a meaningful way to celebrate a joyous occasion, remember a loved one, or comfort a mourner, please consider a donation to Congregation Beth Ami. When you make a gift, a card is sent to the honoree or the family and your donation is proudly acknowledged in the Shofar. The minimum donation for each occasion is \$7.50. Congregation Beth Ami truly appreciates your support.

### Children's Education Fund

In honor of Susy Raful's birthday  
—Fred & Jeanne Levin

### General Fund

In memory of our parents  
—Abe & Gayle Farkas

In memory of Karen's mother,  
Ursula Schussheim  
—Arnold & Karen Herskovic

In honor of Susy Raful's birthday  
—Arnold & Mienieke Drake

In honor the Batzdorff's new  
house—Arnold & Mienieke Drake

In honor of Florence Metz's  
birthday—Arnold & Mienieke Drake

In honor of Florence Metz's 100th  
birthday—Asber & Lyla Natban

Prayers for Michael Newman  
—Barbara Boren

In honor of Susy Raful's 90th  
birthday—Barbara Boren

In honor of Daniel Rosenthal,  
person extraordinaire—giving  
back magic as medicine. Daniel  
is magic!!!—Barbara Tomin

In honor of Florence Metz's 100  
great years—Barbara Tomin

In honor of Bonnie and Phil's 140  
years on this earth—Barbara Tomin

In memory of my father, Fredrick  
Marshall—Carolyn Metz

Condolences to Barbar Greensweig  
and family upon the passing of her  
mother, Rosalie Schweit  
—David & Margorie Ballo

Condolences to the Sovel and  
Newman families upon the passing  
of William Sovel  
—David & Margorie Ballo

Mazal Tov to the Guttenberg-Mazner  
family and to Magdalen & Logan  
upon the birth of Esther  
—David & Margorie Ballo

Continuing better health to Michael  
Newman—David & Margorie Ballo

In memory of Rosalie Schweit  
—Desmond & Margaret Shapiro,  
Dr. Murray & Roberta Zucker

In memory of Harry Hankin  
—Ed & Nancy Sherman

In memory of Darryl Shapiro  
—Edith Newman

Happy Birthday to Susy Raful  
—Edith Newman

Mazel Tov to Bob Raful for the  
honor of North Bay Veteran of the  
Year and to Susy Raful on her  
special birthday  
—Edward & Nancy Sherman

In memory of Rosalie Schweit  
—Edward & Nancy Sherman

In memory of Josephine Sherman,  
mother of Ed  
—Edward & Nancy Sherman

In honor of Susy Raful's 90th birth-  
day—Elisabeth & David Van Nuys

In honor of Bob Raful being named  
Veteran of the Year  
—Elisabeth & David Van Nuys

In honor of Susy Raful's birthday—  
Eric Whinston

In honor of Florence Metz's 100th  
birthday—Esther Pilch

In memory of my nephew, Dan Ben  
Hershel—Evelyn Gurevitch

In memory of Rosalie Schweit  
—Gary & Barbara Greensweig

In honor of Susy Raful's birthday  
—Herb & Ellen Brosbe

In honor of Sylvia Sucher's 103rd  
birthday—Ivan Barta

In honor of being called for  
aliyahs—Ivan Barta

In honor of being called to an  
aliyah—Ivan Barta

In memory of Rosalie Schweit  
—Jewish Community Federation

In honor of Bob Raful. Congrats on  
your Vet of the Year award. Always  
proud of you.—Juli Scherer

In memory of Rosalie Schweit  
—Juli Scherer

In memory of Harry Hankin  
—Kieve & Elaine Goodstein

A generous donation from the  
Israeli Dancers  
—Leanne Schy & Mark Stoelting

A generous donation  
—Margaret Nance

In honor of Susy Raful's 90th  
birthday—Mark & Carol Rosen

In honor of Maury Jones' 90th  
birthday—Mark & Carol Rosen

In memory of Harry Hankin  
—Peter Delowe

In memory of Abraham & Amelia  
Olchovy—Raynore Paule

In memory of William Sovel  
—Richard Kahn & Anne Brown

In honor of the birth of Esther  
Aronka Wolfe-Smith  
—Richard Kahn & Anne Brown

Congratulations to Carolyn Metz  
upon her retirement  
—Richard Kahn & Anne Brown

In honor of Susy Raful's birthday  
—Roslyn Malloy

In honor of Maurice Jones' 90th  
birthday—Ross Jones & Jane Paul

In memory of Ester Pekker  
—Semyon & Olga Pekker





# GENEROUS CONTRIBUTIONS TO OUR CONGREGATION

Continued...

In honor of the 90th birthday of Susy Raful and Susy's twin sister, Edit—*Sofya Pekker*

Mazel Tov to Air Force Lt. Col Robert Raful, the North Bay Veteran of the Year—*Sofya Pekker*

In memory of my parents, Mary Umansky and Ilya Makarevich—*Sofya Pekker*

In honor of Bob Raful being named Veteran of the Year—*Stuart & Ethel Schy*

In honor of Susy Raful's birthday—*Stuart & Ethel Schy*

In honor of the 70th birthdays of Bonnie Boren & Phil Weil—*Stuart & Ethel Schy*

In honor of Florence Metz's 100th birthday—*Tish Levee*

In honor of Sam Dzik's Bar Mitzvah—**Tish Levee**

## Israel Programming Fund

Speedy recovery to Jan Urdzik for your knee—*Bob & Susy Raful*

Speedy recovery to Arnold Drake—*Bob & Susy Raful*

In memory of William Sovel—*Bob & Susy Raful*

In memory of Rosalie Schweit—*Bob & Susy Raful*

In memory of my father, M. Joseph Raful—*Bob & Susy Raful*

Happy Birthday to Bonnie Boren & Phil Weil—*Robert & Susy Raful*

## Jill Tager Nursery School Scholarship Fund

On the occasion of Michelle, David, and Isaac's new family member, Esther Aronka—*Barbara Tomin*

## Library Fund

In honor of Susy & Edit Raful's 90th birthdays—*Evelyn Gurevitch*

## Malk Fund

In memory of Hyman Sherman—*Bob Silverman*

In memory of Gloria's father, Henry Tausk—*Donald & Gloria Glickman*

In memory of our daughter, Jennifer Hoffmann—*Donald & Gloria Glickman*

To Michael Newman with much love from Phyllis for a very good recovery from surgery—*Phyllis Shapiro*

In memory of Muriel Shainsky—*Phyllis Shapiro*

In memory of my dear sister, Audrey Schoen—*Phyllis Shapiro*

In memory of Rosalie Schweit. With much love from Phyllis—*Phyllis Shapiro*

## Nursery School Fund

In memory of Norman Abramowitz—*Evey Abramowitz*

## Rabbi's Discretionary Fund

In honor of Rabbi Miller's son's wedding—*Bob & Susy Raful*

Happy New Year to the Shabbat morning gang—*Branagan*

Mazel Tov to Rabbi & Susan Miller upon the marriage of their son—*Judy Stern*

In memory of my husband, Emil Tsipan—*Malvina Tsipan*

In memory of Stan's sister, Ronda Heard—*Stan Feingold & Roz Edelson*

In appreciation of the Rabbi's time today—*Sue Bell*

In honor of Susy Raful's 90th birthday—*Sue Bell*

## Religious School Fund

Welcome and thank you to Anya Por, new Religious School Director—*David & Margorie Ballo*

Best wishes for a complete recovery to Judy Dzik—*Edward & Nancy Sherman*

In honor of Anya Concoff Por, our new Director of Youth Education, wishing you a fabulous school year—*Edward & Nancy Sherman*

Mazel Tov to the Guttenberg/Matzner family on the birth of Esther Aronka Wolfe-Smith—*Edward & Nancy Sherman*



**Carolyn Metz**  
Ecogreen Certified Agent  
DRE # 01488014  
707-537-2369 - Direct  
707-481-3390 - Cell  
cmetz@fhallen.com  
www.carolynmetz.com



460 Mission Blvd., Santa Rosa, CA 95409



**SCHY**

Leanne Schy  
Graphic Design  
& Copywriting  
1145 Murray Ct.  
Santa Rosa,  
California 95404  
707-528-4874  
LSchy@Sonic.net



## October Yahrzeits

Secular dates correspond to Hebrew date of death.

Observance of yahrzeit begins at sundown the previous day.

All yahrzeits observed at Beth Ami.

### Announced on Oct. 2 & 3

- Oct. 4 Morris Edelberg,  
Father of Marjorie Gordon
- Oct. 4 David Friedman,  
Brother of Harry Friedman
- Oct. 5 Arnold Gross,  
Father of Sylvia Sucher
- Oct. 6 Michael Letourneau, Son  
of Pam Jacobs Letourneau
- Oct. 6 Lester Schloner,  
Father of Carol Swanson  
and Fred Schloner

### Announced on Oct. 8 & 9

- Oct. 11 Mitchell Boyd,  
Father of Elizabeth Boyd
- Oct. 13 Mary Diamond,  
Mother-in-law  
of Marilyn Diamond
- Oct. 13 Harold Rosen,  
Father of Mark Rosen
- Oct. 13 Al Sherman,  
Father of Edward Sherman
- Oct. 16 Tillie Edelberg,  
Mother of Marjorie Gordon

### Announced on Oct. 16 & 17

- Oct. 18 Bessie Drake, Stepmother  
of Arnold Drake
- Oct. 21 Lisa Ballo,  
Mother of David Ballo
- Oct. 22 Irene Gordon,  
Mother-in-law  
of Marjorie Gordon
- Oct. 23 Ann Van Mourik Cory,  
Mother of Linda Emblen

### Announced on Oct. 23 & 24

- Oct. 24 Aaron Friedman,  
Brother of Harry Friedman
- Oct. 24 Eugene Streitfeld,  
Husband of Ricki Streitfeld
- Oct. 25 John Holloway, Husband  
of Lenore Holloway
- Oct. 26 Sydney Paul,  
Mother of Jane Paul
- Oct. 27 Riva Levanon, Sister of  
Ahuva Simon-Sa'ar

- Oct. 27 Dora Schiffman,  
Mother of Bernice Fox
- Oct. 28 Joyce Bressick,  
Mother of Sanford Bressick
- Oct. 28 Brukha Vilenskeya,  
Mother of Malvina Tsipan
- Oct. 29 Berkley Garrison,  
Grandson of Tish Levee
- Oct. 29 Irv Judd,  
Son of Lillian Judd
- Oct. 30 Charles Cohen,  
Father of Eli Cohen
- Oct. 30 Marcia Kupfer,  
Mother of Judy Kupfer

### Announced on Oct. 30 & 31

- Oct. 31 Anna Myerfeld,  
Grandmother of  
Patty Bernstein
- Oct. 31 Sidney Rosenthal, Brother  
of Bobbie Rosenthal
- Nov. 1 Malka Wachsberg Miller  
Mother of Eli Miller
- Nov. 2 Max Malk,  
Father of Phyllis Shapiro
- Nov. 5 Norman Schloner,  
Brother of Carol Swanson  
and Fred Schloner
- Nov. 6 Belle Rosen,  
Mother of Mark Rosen

### October Birthdays

- 7 Earl Goldberg
- 7 Carl Servin
- 8 Ruth Weiss
- 9 Laura Alexander
- 10 Sanford Bressick
- 11 Blair Pleasant
- 12 Malvina Tsipan
- 13 Eli Miller
- 14 Evey Abramowitz
- 14 Jeffrey Sommers
- 18 Judi Hyman
- 19 Richard Kahn
- 19 Rabbi George Schlesinger
- 19 Jeffrey Sheff
- 20 Andrew Brown
- 20 John Whitaker
- 23 Judy Gunnar
- 25 Marge Brody
- 25 Gerald Petlock
- 27 Rimma Rivkin
- 29 Lillian Judd
- 30 Rick Concoff

### August Anniversaries

- 6 Phil Weil & Bonnie Boren
- 12 Ben & Tara Winkler
- 25 Don & Gloria Glickman
- 25 Joe & Signe Minuskin
- 25 Stephen & Andrea Nett
- 29 Paul & Michelle Zygielbaum
- 31 Eli & Yona Miller

## Simcha Board Tree of Life

*Honor thy mother...also thy  
aunt, uncle, cousin, child,  
best friend, teacher with an  
engraved leaf on our Simcha  
Board, commemorating any  
joyous occasion, bestowal  
of an honor, or cause for  
thanksgiving.*

**Leaf—\$360**

**Small Stone—\$1000**

**Large Stone—\$2500**

*We also provide the opportunity for you to memorialize loved ones.*

**Yahrzeit Board**

**Plaque—\$450**



## November Yahrzeits

Secular dates correspond to Hebrew date of death.

Observance of yahrzeit begins at sundown the previous day.

All yahrzeits observed at Beth Ami.

### Announced on Nov. 6 & 7

- Nov. 7 Max Sucher,  
Husband of Sylvia Sucher
- Nov. 7 Mayer Wegman,  
Father of Jack Wegman
- Nov. 8 Hans Biberstein, Father of  
Susanne Batzdorff
- Nov. 9 Helen Margolese, Mother  
of Michelle Zygielbaum  
and Sister-in-law of  
Irwin Margolese
- Nov. 9 Harold Zeamans,  
Grandfather of  
Judith Helman

### Announced on Nov. 13 & 14

- Nov. 13 Moshe Tzaig,  
Husband of Branagan
- Nov. 14 Florence Goodman,  
Mother of  
Andrea Goodman
- Nov. 15 Dorit Epstein,  
Mother of  
Shacharit Rosenthal
- Nov. 15 John Metz,  
Son of Florence Metz
- Nov. 16 Alvin Dove,  
Brother-in-law of  
Betty Franks
- Nov. 17 Minnie Friedman,  
Mother of Harry Friedman
- Nov. 17 Kees Rijnveldt,  
Stepbrother of  
Mieneke Drake
- Nov. 18 Samson Hochfield,  
Father of Malvina Tsipan
- Nov. 19 Marcella Liverman,  
Aunt of Marc Bernstein
- Nov. 19 Bernard Shelan,  
Father of Ronald Shelan
- Nov. 20 David Spiegelman,  
Cousin of Ronit Glickman
- Nov. 20 Gaye Spiegelman,  
Aunt of Ronit Glickman

- Nov. 20 Mark Spiegelman,  
Cousin of Ronit Glickman
- Nov. 20 Sylvia Spiegelman,  
Cousin of Ronit Glickman

### Announced on Nov. 20 & 21

- Nov. 21 Leonard Klein,  
Brother of Lillian Judd
- Nov. 21 Rudolph Kupfer,  
Father of Judy Kupfer
- Nov. 22 Joe Goldberg,  
Father of Richard Goldberg
- Nov. 24 Phil Epstein, Father of  
Shacharit Rosenthal
- Nov. 24 Joseph Harrosh, Uncle of  
Dr. Mark Sutter
- Nov. 24 Miriam Malk,  
Mother of Phyllis Shapiro
- Nov. 24 Isadore Wiesenthal,  
Father of Natalie Friedman
- Nov. 25 Joaquin Boadella,  
Father of Lillian Shelan
- Nov. 25 Jennie Goldberg,  
Mother of Betty Franks
- Nov. 25 Rose Schneider, Mother of  
Evelyn Gurevitch
- Nov. 26 Jacob Goldman,  
Father of Ethel Schy
- Nov. 27 Clara Glass,  
Mother of Gussie Levine

### Announced on Nov. 27 & 28

- Nov. 28 Rochelle Adler,  
Sister of Judy Dzik
- Nov. 28 Raymond Nett,  
Father of Stephen Nett
- Nov. 28 Abraham Schwaber,  
Father of Fredrika Gross
- Nov. 29 Vivian Kearns,  
Aunt of Vivian Salmon
- Nov. 30 George Kaplan,  
Father of Rhonda Rosenbach
- Dec. 4 Anna Barta,  
Mother of Ivan Barta

### November Birthdays

- 1 Roslyn Edelson
- 1 Vivian Salmon
- 6 Janice Sternfeld
- 8 Bonnie Gee
- 9 Vivian Klein
- 9 Erik Uriarte
- 11 Harry Friedman
- 13 Jane Rogan
- 19 Joseph Minuskin
- 20 Fara Elizalde
- 21 Edee Sternfeld-Squires
- 22 Gloria Glickman
- 23 Claire Miller
- 26 Nancy Fleming
- 26 Sherrill Golemb
- 28 Dr. Russ Gurevitch

### September Anniversaries

- 16 Leanne Schy &  
Mark Stoelting
- 18 Jack & Patie Wegman
- 21 Stu & Ethel Schy
- 23 Eli Cohen & Betty Boyd

## Please Support Our Advertisers

Contact Congregation  
Beth Ami Office  
[office@bethamir.org](mailto:office@bethamir.org)  
for details about  
advertising in the Shofar.

## Thank you!



# Congregation Beth Ami

4676 MAYETTE AVENUE, SANTA ROSA, CA 95405

**Address service requested**

## **October Shabbatot**

### **October 3**

*Parshat Chol Ha-Moed Sukkot, Ex:33:12–34:26  
(Page 538)*

Candle Lighting: 6:35

Havdalah: 7:30

### **October 10**

*Parshat Beresbit: Gen: 5:1–6:8 (Page 30)*

Candle Lighting: 6:24

Havdalah: 7:20

### **October 17**

*Parshat: Noach: Gen: 11:1–11:32 (Page 58)*

Candle Lighting: 6:14

Havdalah: 7:10

### **October 24**

*Parshat Lech Lecha: Gen: 16:1–17:27 (Page 86)*

Candle Lighting: 6:04

Havdalah: 7:01

### **October 31**

*Parshat Vayera: Gen:21:1–22:24 (Page 112)*

Candle Lighting: 5:56

Havdalah: 6:53

## **November Shabbatot**

### **November 7**

*Parshat Chayeh Sara: Gen 24:53–25:18  
(Page 137)*

Candle Lighting: 4:48

Havdalah: 5:46

### **November 14**

*Parshat Toledot: Gen: 27:28–28:9 (Page 155)*

Candle Lighting: 4:42

Havdalah: 5:41

### **November 21**

*Parshat: Vayete: Gen. 31:17–32:3 (Page 181)*

Candle Lighting: 4:37

Havdalah: 5:37

### **November 28**

*Parshat Vayishlach: Gen. 35:16–36:43  
(Page 214)*

Candle Lighting: 4:34

Havdalah: 5:35