



CONGREGATION
Beth Ami

Shofar

4676 MAYETTE AVENUE, SANTA ROSA, CALIFORNIA 95405

707-360-3000

JANUARY / FEBRUARY 2013

5773

THE MEGILLAH GOES TO



Saturday, March 2,
8 p.m. \$24/person.

Join us following the performance to party with the spielers; continue the fun with music by the Megillah Band, dancing, wine, refreshments, home made hamentashen, and more.



Sunday, March 3,
2 p.m. \$6/Adults

Children 12 & under
FREE.

Following the performance you shouldn't leave hungry: have some home made hamentashen, tea, coffee and juice.

NASHVILLE

★ ★ ★ ★ **BE A SPONSOR!** ★ ★ ★ ★

Why should the cast get all the glory? Sponsor the Purimspiel and we'll put your name in lights! Or in the program, at least. You could have a voiceover credit. In fact, we might even write you a singing commercial and perform it during the show. Contact Andy Fleming: andyflem@gmail.com 707-527-7743

Congregation Beth Ami

4676 Mayette Avenue
Santa Rosa, CA 95405

Telephone: 707/360-3000

Fax: 707/360-3003

Email: office@BethAmiSR.org

Website: www.BethAmiSR.org

Office Hours

Monday-Thursday 10 am-4 pm

Friday 10 am-2 pm

Gift Shop Hours

Monday-Thursday 10 am-4 pm

Friday 10 am-2 pm

Most Thursdays until 6 pm

Sunday during Religious School
10 am -12 noon

Library Hours

The library is open the following
Sundays from 9:15 am - 12:30
pm during the 2012-2013 school
year. Gabor Por, 304-0484.

Jan. 13 & 27

Feb. 3 & 24

Mar. 10 & 24

Apr. 7 & 21

May 5



Please "like" us at www.facebook.com/CongregationBethAmi

Personnel

Rabbi Mordecai Miller

314-308-3672

chaver37@gmail.com

Carolyn Metz

Esther Baruch

Executive Director

360-3011

execdirec@bethamistr.org

Elizabeth Jarlsberg, Office Manager

360-3000

office@bethamistr.org

Diane Lennox, Bookkeeper

bookkeeper@bethamistr.org

Caroline Calvert

Robyn Fisher-Tachouet

Nursery School Co-Directors

360-3030

ns@bethamistr.org

Jennifer Hayes, NS Assistant

360-3030

ns@bethamistr.org

Rick Concoff, JCC Teen Program

823-3916

rickc@jccsoco.org

Karen Gould, Shofar Newsletter

360-3000

newsletter@bethamistr.org

Pnina Loeb, RS Director

360-3000

rs@bethamistr.org

Gabor Por, Librarian

360-3006

library@bethamistr.org

Bonnie Boren, Gift Shop

360-3022

Andrea Nett, Friedman Center Director

360-3021

director@friedmaneventcenter.com

Edythe Smith, Invitations, 538-3698

Officers and Board of Directors 2012-13

Arnold Drake, President

gidrdrake@gmail.com

Barbara McGee, Treasurer

barbara.mcgee@ffic.com, 953-2526

Betty Boyd, Secretary

bettyboyd@informingscience.org,
537-2211

David Ballo, Past President

klezhead@yahoo.com, 576-0612

VP of Administration - Open

Stan Feingold, VP of Facilities

feingoldstanley@gmail.com

Russ Gurevitch, VP of Ways & Means

russgurev@msn.com

Barbara Tomin, VP of Youth & Education

btomin@sonic.net, 576-1167

Members at Large

Mel Decker

meldecker5@gmail.com, 540-0614

Gary Highland

gghighland@sbcglobal.net

Richard Kahn

earthin@sonic.net, 217-5265

Alan Krubiner

akrubiner@msn.com, 694-6239

Lyla Nathan

lylalyla2@yahoo.com, 526-7438

Jeff Richman

jr-abs@saber.net, 235-4858

Leanne Schy Torah/Haftarah Readings

leanne@sonic.net

Mark Sutter

drmarksutter@vom.com, 935-7737

Members Ex Officio

Esther Baruch

Caroline Calvert

Robyn Fisher-Tachouet

Pnina Loeb, 695-2275

Carolyn Metz, 481-3390

Mission Statement

Through celebration, learning, prayer and community, we seek to enrich our lives, transform our hearts, help heal the world and sustain our Jewish heritage.

Vision

A vibrant, growing campus for Jewish living where the joys of Jewish values and rituals are made accessible and relevant to the everyday lives of our members. A flourishing, prospering congregation enjoying the wholehearted support, commitment and involvement of all our members.

Deadline for March / April 2013 Shofar February 15

All editorial submissions must be received in the Shofar box in the Beth Ami office or via email on or before the deadline. All submissions are subject to editing for clarity, brevity and content. Please submit articles as Microsoft Word documents via email attachments. Contact Karen Gould, 360-3000 or newsletter@bethamistr.org with corrections, concerns or questions.

The Shofar is published by Congregation Beth Ami, 4676 Mayette Avenue, SR, CA 95405. All members in good standing receive the periodical free. Yearly subscriptions are \$25.00.

This month's issue is:

Volume 18, Issue 3

Issue Date: January 2013



RABBI'S REMARKS

Rabbi Mordecai Miller

There were many names given to the Beit haMikdash – the Holy Temple in Jerusalem. One of them was the “Threshing Floor of Arauna”. How did such a sacred place get such a strange name?

In the second book of Samuel, Chapter 24, mention is made of this location. David was instructed by the prophet, Gad, to purchase this site from Araunah the Jebusite. This same location was later designated as the Temple Mount. If you look at this reference, you will see that the site is associated with the end of a plague that had taken place as a result of a sin committed by King David.

The Temple was to be a place of Reconciliation where humans – if sincerely motivated – could find Divine forgiveness. So this incident mentioned above could be seen as a model of what the Temple was capable of achieving: the blotting out of sin.

So why a “Threshing Floor”?

“Threshing” is the process by which kernels of edible wheat are extracted from the inedible husk that surrounds each grain. This process involves two stages:

(1) Breaking the dry sheaves of wheat into small pieces of dried up stalks and wheat kernels. This involved a “threshing sled” which was a board with spikes on the bottom. Running this sled over the sheaves a number of times would essentially pulverize them into chaff. The grain kernels, however, would remain intact.

(2) Using a large fork to throw these pieces into the air. Here even the slightest breeze would carry the dry pieces away. The kernels of grain would drop to the ground because they were much heavier than the chaff.

Symbolically, the chaff could be viewed as the sin which surrounds the soul, while the kernel would be the pure soul of the person. Just as the process of threshing removed the chaff from the grain, so the Temple was a place that would separate off sins from the human kernel. Peace could be restored to the war-torn battleground of the soul.

Tradition, however has an alternative explanation in the form of a story—of why the Temple was built on that exact location.

The story goes that there were two brothers who lived on opposite sides of Mount Moriah. One brother was wealthy and single, while the other was of much more modest means but blessed with a family. Every year towards the end of the harvest, the brothers would prepare to take their stalks of wheat to the threshing floor at the mountain top so as to extract the wheat kernels and take them to market.

The single brother began to think to himself, “My brother has a large family and many demands on his resources. I, on the other hand, have more than I need to take care of myself. What if I find a time when he isn’t around and take some of my bags of grain onto his side of the threshing floor?”

At the same time, the married brother thought to himself, “My brother lives all by himself. He has no one to take care of him as he grows older. I’m blessed with a wonderful, strong family. What if I take some bags of grain at a time when he won’t be around, and put them on his side of the threshing floor?”

So, unbeknownst to one another, each one started to carry out his plan. The brothers were amazed to discover that the following morning, they would wind up with the exact number of bags that they had collected the previous night. When this happened every day, they took this as a Divine miracle.

Then one night they happened to cross the threshing floor at exactly the same time. When they bumped into each other, they realized what had been happening. They were overcome with emotion in experiencing the true love and compassion of the other. They embraced and cried for joy.

God looked down from Heaven and decided at that moment that the Temple would be built on this exact spot.

This is what it really takes to foster a spirit of peace among human beings. Imagine the world if every human being were capable of finding compassion in their heart for the challenges others face.

Margaret Meade, the great anthropologist, once investigated a tribe who were reputed to have very happy marriages. When she asked the men why this was the case, the men told her that the women worked above and beyond in taking care of their responsibilities. When Meade interviewed the women, they told her that the men worked much harder than they did!

We could see this as a specific iteration of the story about the brothers.

For example, if every Israeli could see every Palestinian as their brother and if every Palestinian could see every Israeli as their brother. If each side could look inside their hearts and understand and sympathize with the situation of their neighbor and take action to support them, Peace would be something achievable!

Is it impossible? It’s up to each one of us to answer that question.





EVENTS & ANNOUNCEMENTS

Welcome to our new member

Carol Levine

Mazal Tov u'siman Tov



Welcome Asher Paul Zygielbaum, son of Joshua and Tammie Zygielbaum (Joshua was a Bar Mitzvah at CBA in 1994), grandson of Paul and Michelle Zygielbaum and nephew of Irwin Margolese.

We offer sincere condolences to

Barbara Branagan and her family on the death of her husband, **Moshe Tzaig**.

Misheberach

Bless those in need of healing with refu'ah sh'layma
The renewal of body, the renewal of spirit

Andy Goodman

Lauren Newman

Marc Bernstein

Anna Judd

Dalia Sheff

Future Bar and Bat Mitzvah celebrations

Josh Simkovitz	February 16
Noa Landau-Camarillo	April 27
Daniel Sherman	July 20
Moriah Rosenthal	July 27
Nick Alexander	August 17



Welcome the stranger

Holidays are early this year! The first Passover seder is March 25. Our community second seder is March 26. If you would like to host guests or be a guest at a home seder, please let us know early so we can better accommodate you.

Thanks to our publicity team: **Leanne Schy** for designing eye-catching flyers and **Tish Levee** for placing news of all our wonderful events in local publications.

Thank You

Israeli Folk Dancing – on Wednesdays!

January 9 and 23

February 6 and 20

Wednesdays, 6:30 - 9 OR 9:30 pm,
Friedman Center.

For more information: **Leanne Schy**,
528-4874 or Leanne@sonic.net.



Hebrew

➤ **Esther Baruch**, 528-2265 or esther@pacific.net.

➤ **Ahuva Simon-Sa'ar**, 545-2454.

Save the Date
Semi-annual membership meeting
Sunday, January 13, 2013
Join us for bagels, coffee and discussion.
Social Hall
10 am



Traditional Megillah reading

Kids and adults—Come in costume!

Shake those graggers!

Saturday evening February 23

Sunday morning February 24



eScrip UPDATE THANKS to our wonderful supporters. YOU can join us NOW!

In spite of issues with the economy, our eScrip program is having one of the best years yet. January - November, 2012 results show our supporters have collectively contributed almost \$1900 to Beth Ami JUST BY DOING THEIR REGULAR SHOPPING! Thank you to everyone who supports this program by shopping at Safeway & Oliver's Markets along with other merchants. Thanks to our supporters for signing up so that a portion of their purchases can be donated to Beth Ami. If you are not a part of this easy way to help Beth Ami, join us NOW!

To sign up or get eScrip help, contact Nancy Sherman at 538-9388 or nancysherman06@gmail.com or call





EVENTS & ANNOUNCEMENTS



Light It Up! Chanukah Party

The first annual Light It Up! Chanukah party was an overwhelming success! The children sang songs, danced, made dreidels and other crafts, ate latkes and met

Susi and Globi from Guide Dogs for the Blind.

Thank you to the Beth Ami Community Nursery School and the Beth Ami & You Tot Shabbat Family Education Series Committee for producing such a fun Chanukah Party!

At the event, the Beth Ami & You Tot Shabbat Family Education Series was introduced.

Families were invited to join us for a monthly series of programs and events designed to enhance our children's Jewish experiences. The theme for our first program is Tu B'Shevat scheduled for January 27, 10 am-12 pm. See below for more details.



Beth Ami & YOU 2013 Tot Shabbat Family Education series

Learn • Connect • Grow • Play

Jan. 27	Tu B'Shevat
Feb. 24	Purim Carnival
TBA	Passover
April 14	Israel
May 5	Shabbat

Cost:

\$18 for the whole series; \$5 per event at the door.

Time: 10am - 12 pm.

Arrive at 9:30 am to join the Religious School students celebrate Havdalah, marking the end of Shabbat.

For more information and registration, contact **Ronit Glickman**, 291-6822 or ronit.glickman@yahoo.com.

All faiths welcome.

Shabbat Dinners

Every Shabbat is a celebration, but at Beth Ami on the first Friday of the month we add to the joy of Shabbat by having a community kosher dinner catered by Andrea Nett, Wine Country Kosher. The evening begins at 6:00 with music, socializing, and dinner followed by worship at 7:30.



Because many of you want to know what will be served at the Shabbat dinners, we will now be letting you know ahead of time whether the main entrée will be chicken or fish.

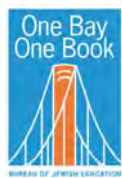
THE FIRST SHABBAT DINNER OF THE SECULAR YEAR IS AT 6:00 ON JANUARY 4 AND CHICKEN WILL BE SERVED.

We look forward to seeing you then. Please contact the office by Monday, December 31 at (707) 360-3000 or office@BethAmiSR.org to make your reservations for the January dinner. Announcements about future dinners will be in the Cybershul. If you do not have Internet connection, contact the office for details.

The cost for the dinner is \$18 per adult member and \$22 per adult non-member. Youths aged 5-12 are \$9. Children under five are free.

A big THANK YOU to Andrea Nett for our wonderful Friday night dinners. Special thanks for accepting late reservations and running to shop for the last minute people in order to keep Beth Ami a warm, welcoming, inviting place.

A request to those last minute callers: We love to have you at the table. Please be considerate of Andrea's generously offered time and reserve early.



One Bay – One Book

What We Talk About When We Talk About Anne Frank

by Nathan Englander

has been chosen as the book which will be read and discussed all over the Bay Area from now until May 2013.

We will discuss Nathan Englander's book at Congregation Beth Ami
April 17, 2013 at 10 a.m. and 7 p.m.

Bureau of Jewish Education program sponsored by the Library Committee and the Adult Education Committee.

CONGREGATION BETH AMI | JANUARY 2013

Sun	Mon	Tue	Wed	Thu	Fri	Sat
30	31	1	2	3	4	5
	Office Open 10am-4pm	New Year's Day Office Closed	Office Open 10am-4pm	Office Open 10am - 4pm	Office Open 10am-2pm 6pm - Shabbat Dinner 7:30pm - Erev Shabbat	9:30am - Shabbat Services 12pm - Potluck Luncheon
6	7	8	9	10	11	12
8:30am - Morning Minyan 10am - Capital Campaign 6:45pm - Bingo at Beth Ami	Office Open 10am-4pm 5pm - Chaverim - 8th Grade	Office Open 10am-4pm 10am - Adult Ed. course 6:45pm - Bingo at Beth Ami 7pm - Executive Committee	Office Open 10am-4pm 6:30pm - Israeli Dancing 7pm - Adult Ed. course with	Office Open 10am - 4pm 5pm - Chaverim - 11th/12th	Office Open 10am-2pm 7:30pm - Erev Shabbat	9:30am - Shabbat Services 12pm - Potluck Luncheon
13	14	15	16	17	18	19
9:15am - Library Open 10am - Membership 6:45pm - Bingo at Beth Ami	Office Open 10am-4pm	Office Open 10am-4pm 10am - Adult Ed. course 6:45pm - Bingo at Beth Ami 7pm - CBA Board Meeting	Office Open 10am-4pm 7pm - Adult Ed. course with	Office Open 10am - 4pm	Office Open 10am-2pm 10am - Religious Practices 7:30pm - Erev Shabbat 8:30pm - Oneg	9:30am - Shabbat Services 12pm - Potluck Luncheon
20	21	22	23	24	25	26
8:30am - Morning Minyan 10am - Simplicity 6:45pm - Bingo at Beth Ami	Martin Luther King, Jr's Day Office Closed	Office Open 10am-4pm 10am - Adult Ed. course 6:45pm - Bingo at Beth Ami	Office Open 10am-4pm 6:30pm - Israeli Dancing 7pm - Adult Ed. course with	Office Open 10am - 4pm	Office Open 10am-2pm 7:30pm - Erev Shabbat	Tu B'Shvat 9:30am - Shabbat Services 12pm - Potluck Luncheon
27	28	29	30	31	1	2
International Holocaust 9:15am - Library Open 10am - Beth Ami & You Tu 6:45pm - Bingo at Beth Ami	Office Open 10am-4pm	Office Open 10am-4pm 10am - Adult Ed. course 6:45pm - Bingo at Beth Ami	Office Open 10am-4pm 7pm - Adult Ed. course with	Office Open 10am - 4pm	Office Open 10am-2pm 6pm - Shabbat Dinner 7:30pm - Erev Shabbat	9:30am - Shabbat Services 12pm - Potluck Luncheon 6pm - Chaverim Shabbaton

CONGREGATION BETH AMI | FEBRUARY 2013

Sun	Mon	Tue	Wed	Thu	Fri	Sat
<div>27</div> <div>International Holocaust</div> <div>9:15am - Library Open</div> <div>10am - Beth Ami & You Tu</div> <div>6:45pm - Bingo at Beth Ami</div>	<div>28</div> <div>Office Open 10am-4pm</div>	<div>29</div> <div>Office Open 10am-4pm</div> <div>10am - Adult Ed. course</div> <div>6:45pm - Bingo at Beth Ami</div>	<div>30</div> <div>Office Open 10am-4pm</div> <div>7pm - Adult Ed. course with</div>	<div>31</div> <div>Office Open 10am - 4pm</div>	<div>1</div> <div>Office Open 10am-2pm</div> <div>6pm - Shabbat Dinner</div> <div>7:30pm - Erev Shabbat</div>	<div>2</div> <div>9:30am - Shabbat Services</div> <div>12pm - Potluck Luncheon</div> <div>6pm - Chaverim Shabbaton</div>
<div>3</div> <div>Chaverim Shabbaton</div> <div>8:30am - Morning Minyan</div> <div>9:15am - Library Open</div> <div>6:45pm - Bingo at Beth Ami</div>	<div>4</div> <div>Office Open 10am-4pm</div> <div>5pm - Chaverim - 8th Grade</div>	<div>5</div> <div>Office Open 10am-4pm</div> <div>6:45pm - Bingo at Beth Ami</div>	<div>6</div> <div>Office Open 10am-4pm</div> <div>6:30pm - Israeli Dancing</div>	<div>7</div> <div>Office Open 10am - 4pm</div> <div>5pm - Chaverim - 11th/12th</div>	<div>8</div> <div>Office Open 10am-2pm</div> <div>7:30pm - Erev Shabbat</div>	<div>9</div> <div>9:30am - Shabbat Services</div> <div>12pm - Potluck Luncheon</div>
<div>10</div> <div>6:45pm - Bingo at Beth Ami</div>	<div>11</div> <div>Office Open 10am-4pm</div>	<div>12</div> <div>Office Open 10am-4pm</div> <div>6:45pm - Bingo at Beth Ami</div> <div>7pm - Executive Committee</div>	<div>13</div> <div>Office Open 10am-4pm</div>	<div>14</div> <div>Office Open 10am - 4pm</div>	<div>15</div> <div>Office Open 10am-2pm</div> <div>7:30pm - Erev Shabbat</div>	<div>16</div> <div>9:30am - Josh Simkovitz's</div> <div>12pm - Potluck Luncheon</div>
<div>17</div> <div>8:30am - Morning Minyan</div> <div>6:45pm - Bingo at Beth Ami</div>	<div>18</div> <div>Office Closed</div> <div>Presidents Day</div>	<div>19</div> <div>Office Open 10am-4pm</div> <div>6:45pm - Bingo at Beth Ami</div> <div>7pm - CBA Board Meeting</div>	<div>20</div> <div>Office Open 10am-4pm</div> <div>9:30am - NS Purim Carnival</div> <div>6:30pm - Israeli Dancing</div>	<div>21</div> <div>Fast of Esther</div> <div>Office Open 10am - 4pm</div> <div>5pm - Chaverim - 11th/12th</div>	<div>22</div> <div>Office Open 10am-2pm</div> <div>7:30pm - Erev Shabbat</div>	<div>23</div> <div>9:30am - Shabbat Services</div> <div>12pm - Potluck Luncheon</div>
<div>24</div> <div>Purim</div> <div>9:15am - Library Open</div> <div>10am - Beth Ami & You</div> <div>6:45pm - Bingo at Beth Ami</div>	<div>25</div> <div>Office Open 10am-4pm</div> <div>Shushan Purim</div>	<div>26</div> <div>Office Open 10am-4pm</div> <div>6:45pm - Bingo at Beth Ami</div>	<div>27</div> <div>Office Open 10am-4pm</div>	<div>28</div> <div>Office Open 10am - 4pm</div>	<div>1</div> <div>Office Open 10am-2pm</div> <div>7:30pm - Erev Shabbat</div>	<div>2</div> <div>9:30am - Shabbat Services</div> <div>12pm - Potluck Luncheon</div> <div>8pm - Purim Spiel</div>



PRESIDENT'S PAGE

Arnold Drake, President

Beth Ami needs you!

The good news is that our synagogue is doing very well. We have a wonderful Rabbi. We have a good attendance at our services and many of our daily minyans. We have Adult and Family Education, a thriving Religious School and the only Jewish nursery school in the county. We have very active Social Action and Israel Affairs committees. Our finances are stabilizing. We had beautiful High Holiday services, wonderful Sukkot services, and a Hannukah program for small children, and a later one for families and adults. We have over 100 volunteers working on over 20 committees.

But we need you!

If you are not already volunteering on a committee, you are missing a valuable Beth Ami experience. If your expertise is finance, cooking, communications, education, or another specialized field, **We need you!**

If you are just a bubbly out-going person who would be a great member of the Membership Committee, or the Welcoming Committee, or you have a good singing voice but do not know the Hebrew prayers and songs . . . **We need you!**

As a member of a committee, you will have a completely different experience. You will make new friends, you will learn more about your synagogue, and you will be doing charitable, rewarding work.

Please make Congregation Beth Ami part of your New Year 2013 resolutions.

We need you!

Have a Healthy and a Happy 2013!



SIYUM: APRIL 26-28 RESTORATION OF TORAH SCROLLS

Mark Sutter

What's happening at Beth Ami on the weekend of the April 26-28 that just can't be missed? If you said, "Lag B'omer," you would be right. If you said **Noa Landau-Camarillo's** Bat Mitzvah, you would also be right. But, beyond these really spectacular celebrations, we will be recognizing *siyum*, the repair of our holy Torahs. A *siyum* celebrates the completion of any unit of Torah, Mishnah or Talmud study and, in our case, the restoration of our Torah scrolls. A *siyum* is followed by a meal, *seudat mitzvah* to honor this event or commandment. It is the last mitzvah (613th) for each Jew to write a sefer torah known as *sefer hahinukh*. Naturally, few of us can write a Torah, so the rabbis reasoned that even commissioning one to do so or even checking a Torah completes this obligation. When our Beth Ami community commissioned Rabbi Rue to repair our Torahs, we in a way completed this obligation. My idea of community ruach!

Have you ever wanted to write the beautiful Hebrew letters found in the Torah like a polished scribe? Have you ever wondered about the mysteries contained in the Torah or how to navigate it with ease? If you are interested in these and more facts and intricacies about the Torah, you will not want to miss participating in this weekends' events. Enjoy workshops, lectures, trivia, food, fellowship and more at Beth Ami's Siyum on the weekend of April 26. **Rabbi Miller** and **Rabbi Rue**, a Torah scholar and sofer, will lead us in this wonderfully enriching experience. We invite all to participate and those interested in doing so, please contact Fundraising Co-Chairs: Russ Gurevich, russgurev@msn.com or Mark Sutter, drmarksutter@vom.com.

Bennett Valley BINGO at the Friedman Center



All are welcome - Don't be shy!

Every Sunday and Tuesday

6:45pm at The Friedman Center

Doors open at 4:00 pm

Win Big Prizes: \$250 - \$350/game

Buy-in starts at just \$15!

Snack Bar & Free Coffee

Proceeds benefit Congregation Beth Ami



ADULT EDUCATION WINTER PROGRAM

Alfred Batdorff

Your Adult Education Committee finalized an exciting program for the winter months and we hope that many of you will be able to take advantage of one or more of our offerings. We tried to present a varied program, featuring many diverse subjects. All programs will be open to the entire Jewish community.

We are enthusiastic about this program and want to whet your appetite with this "Heads Up" announcement, while an Adult Ed Brochure is in preparation. It will contain details pertaining to the various programs, biographical information concerning our faculty and the final course schedule.

PARENTING SUPPORT AND DISCUSSION GROUP

BASED ON THE BOOK

SIMPLICITY PARENTING

BY KIM JOHN PAYNE,

LED BY DEBI NIESTAT

Looking for more joy in your family life?

Meet with other parents who are searching for inspiration in easing daily stresses and getting off the "too much too fast" train.

We will be reading *Simplicity Parenting* by Kim John Payne and meeting to discuss it, one chapter a week.

Our focus will be *Simplicity Parenting* from a Jewish perspective. We will discuss the ways we can simplify and bring joy to our homes using Jewish values and rituals. Relevant to all levels of observance/nonobservance and all denominations. Open to all faiths. All are welcome at no charge.

Sundays, 10:00 am to 12 pm

January 20 February 3, 10

March 3, 10, 17

For more information, call Congregation Beth Ami at 707-360-3000. Please let us know if you plan to attend. We'd like to have enough snacks and seats for everyone.

AGE-ING TO SAGE-ING, LED BY JUDITH GOLEMAN

A profound new vision of growing older, based on a book

DO WE HAVE A PRAYER?

Led by Rabbi Mordecai Miller

What's prayer all about, anyway? What's it supposed to accomplish? How can I relate to words written so long ago? What is "Service of the Heart"? An in-depth exploration into key words used in the Siddur (Prayer book) as well as the various types of prayer. We will look into several familiar prayers. Object: To understand the Hebrew as well as the poetry and to discover ways in which to engage the pray-er.

Wednesdays, 7:00 to 8:30 pm Jan. 9 – Jan. 30

JEWISH ETHICS AND CONTEMPORARY ISSUES

Led by Rabbi Jerry M. Danzig

How Jewish ethics evolved from the Torah, through the Talmud, classical and current responsa to guide us in responding to existential current moral and medical issues: e.g. The Self: Hobbes vs. God; Our Right To Dignity at the End Of Life; Self-preservation; Homosexuality; Self and Others, e.g. Law of Rebuke; Population Control; Capital Punishment; Good Citizenship; Civil Disobedience; etc.

Tuesdays, 10:00 to 11:30 am

Jan. 8 – Jan. 29

by the same name by Reb Zalman Shechter Shalomi. Pre-registration will be required, as the feasibility of the program would depend on the number of participants. This course is offered at a modest fee.

YOGA AND HEBREW CHANTING,

LED BY HANNAH CARATTI

This class could meet in the early evenings on selected Fridays, preceding the Erev Shabbat services. Pre-registration will be required, as the feasibility of the program would depend on the number of participants. This course is offered at a modest fee.

A TASTE OF TORAH,

LED BY RABBI MILLER

More than 20 years ago, we started the study of all books of the Bible, starting with Genesis. This was concluded about a year ago and the time has come to start over again, with a new teacher, a new generation and a 21st Century outlook.

CONFLICT AND PEACEMAKING IN THE TANACH,

LED BY TAMAR LANDAU



SAVE THE DATE

DR. LEN LYONS 'BLACK JEWS IN AMERICA'

WEDNESDAY EVENING, FEBRUARY 20, 2013



RELIGIOUS SCHOOL REPORT

Pnina Loeb,

Religious School Director

Our Religious School students are enjoying Torah, tefillah (prayer), history and Israel studies, Chanukah celebrations, and stretching their creative artistic abilities. They are also debating each other regarding historical events and decisions, growing to be more comfortable with leading their peers and fellow congregants in prayer, and becoming our next generation with good character, high integrity, and critical thinking skills. Our students are a wonderful group of excited learners!

The Purim story in a nutshell

The Persian empire of the 4th century B.C.E extended over 127 lands, and all the Jews were its subjects. When King Ahasuerus had his wife, Queen Vashti, executed for failing to follow his orders, he orchestrated a beauty pageant to find a new queen. A Jewish girl, Esther, found favor in his eyes and became the new queen—though she refused to divulge the identity of her nationality.

Meanwhile, the anti-Semitic Haman was appointed prime minister of the empire. Mordechai, the leader of the Jews (and Esther's cousin), defied the king's orders and refused to bow to Haman. Haman was incensed and convinced the king to issue a decree ordering the extermination of all the Jews on the 13th of Adar—a date chosen by a lottery that Haman made.

Mordechai galvanized all the Jews, convincing them to repent, fast and pray to G-d. Meanwhile, Esther asked the king and Haman to join her for a feast. At the feast, Esther revealed to the king her Jewish identity. Haman was hanged, Mordechai was appointed prime minister in his stead, and a new decree was issued—granting the Jews the right to defend themselves against their enemies.

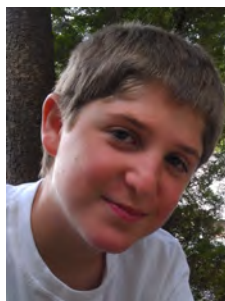
On the 13th of Adar the Jews mobilized and killed many of their enemies. On the 14th of Adar they rested and celebrated.

We will be celebrating with our famous Purim Spiel on March 2 and 3. Please put this very entertaining event on your calendar. The flyer is on the cover.

Please join us

- January 4 – Family Shabbat Dinner. Please join Zim Zum and the congregation. To make your reservations early, call the office at 707-360-3000.
- January 27 – Religious School Tu B'Shevat celebration
- February 1 – Family Shabbat Dinner. Please join Zim Zum and the congregation. To make your reservations early, call the office at 707-360-3000.

NO SCHOOL JANUARY 3 & FEBRUARY 17

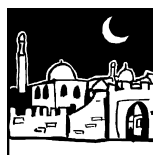


MAZAL TOV TO OUR BAR MITZVAH JOSH SIMKOVITZ

FEBRUARY 16

Hi, my name is Josh Simkovitz. I am twelve years old and I go to Rincon Valley Middle School. Some things I like to do are hanging out with friends, traveling, reading, and being with family. I have been involved with Congregation Beth Ami my whole life. My tutors, **Mark Sutter** and **Rabbi Miller**, have been helping me practice for my Bar Mitzvah. I've studied hard, but I would not have been able to reach this day without their help. I am so grateful to them. Ever since I can remember every Bat Mitzvah or Bar Mitzvah I went to motivated me to have my own Bar Mitzvah. I always imagined having my tallit on while leading the congregation in prayer. I can't wait to see my family, friends and congregants of Beth Ami at my Bar Mitzvah. I look forward to seeing all of you on February 16!





Bal Tashchit—not wasting resources

It's been really cold out there, and our first instinct is to turn up the heat. Instead, try turning it *down* and putting on another layer. Go online to <http://www.indigenousdesigns.com> for organic and Fair Trade sweaters from Santa Rosa's Indigenous Designs (707-571-7811) with free shipping. Buy colorful men's and women's socks and leg and arm warmers made from recycled yarns from RocknSocks of Willits, <http://www.rocknsocks.com/>, at Petaluma's E=Ethical Clothing, Sebastopol's Milk and Honey, or online.

Turning down the heat helps reduce greenhouse gas emissions, saves energy, and saves you money. Get up to 20% credit from PGE for reducing your natural gas use in December and January. In 2011, 2.7 million customers earned bill credits totaling \$70 million. Get the Winter Gas Savings Tracker at <http://www.pge.com/wintergassavings/> as well as tips for saving gas.

Celebrate Tu b'shevat, January 26

- Plant trees. Go to <http://www.jnf.org/> or call 800-542-8733 to plant trees in the Eretz Israel.
- Save trees by reducing your use of virgin paper. Using just one roll of recycled toilet paper per U.S. household would save **297,000 trees** and 122 million gallons of water, while reducing landfill by 1.2 million cubic feet—the equivalent of 1400 garbage trucks.
- Go paperless. Each American household receives unsolicited junk mail equal to 1.5 trees annually—more than 100 million trees total in the U.S. Go to <https://www.catalogchoice.org/> to opt-out of catalogs and other mailings for free.
- Recycle paper. We throw away the equivalent of one billion trees worth of paper annually in the U.S. Each ton of recycled paper can save 17 trees, 380 gallons of oil, 4,000 kilowatts of energy, 7,000 gallons of water, and three cubic yards of landfill space. Those 17 trees can absorb 250 pounds of CO₂, while burning the ton of paper they produce would *create* six times as much CO₂.
- Take your own shopping bag. In less than an hour, a busy supermarket can use 700 grocery bags, which would require a 15-year old tree to make. One supermarket could use six million paper bags a year.

Are you supporting slavery?

Nearly three quarters of the world's cocoa beans are grown on small farms in West Africa, including the Ivory Coast, where an estimated 200,000 children work as virtual slaves. Organic, Fair Trade, and chocolate from Latin America are generally slave-free. For a table of slave-free chocolate go to <http://vision.ucsd.edu/~kbranson/stopchocolateslavery/>.

I began work on this column the night of the 12-12-12 major televised star-studded concert for Superstorm Sandy relief. And then, while searching for ideas, found an Israeli connection.

The following story was posted on my favorite website, Israel21c. It confirmed, once again, how quickly Israeli humanitarian organizations and individuals respond to disaster relief needs.

"On December 6, a group of 10th-graders from Hashmonaim and Beit Shemesh arrived in New York to help in the ongoing clean-up and fix-up efforts after Hurricane Sandy. They dubbed their impromptu trip Masa Hashemesh, or Sunshine Journey.

'Unfortunately, six weeks may seem a like a very long time after Sandy, but there are still areas that need tremendous assistance,' coordinator Stuart Katz of Hashmonaim tells us. 'It's grassroots level and dealing in some neighborhoods that weren't so well-off to begin with.'

Katz had flown over to help for the first 10 days after the storm did its damage, and then his youngest daughter asked if she could come, too. He took her along with five of her friends, arranging for the self-funded group to demolish a ruined basement in a home in the Arverne neighborhood of Queens, New York – and to clean up a Long Beach condo's backyard and driveway ('all done in the rain, incidentally.')

They also prepared fruits and vegetables and set tables for lunch at a soup kitchen run out of a Brooklyn church. 'Our purpose is to show that we help all people – regardless of faith or religion – representing Israel,' says Katz.

During their week in New York, the kids went on about 20 speaking engagements at local schools, and livened up Chanukah parties in Long Beach and Brighton where they met many individuals whose homes and/or synagogues were damaged by the storm.

'Homeowners were very appreciative – they couldn't believe that the journey was put together so quickly and were astonished that kid citizens of Israel (who they feel are under attack so much) feel a need to come and help,' says Katz. 'They were amazed with the work that could be accomplished by teens with a team effort.'

Some of the peers they spoke with at schools said they would now like to visit Israel – a destination that was not in their plans previously. Maybe these six high school kids have a future in diplomacy. "

May the spirit of the Hanukkah lights sustain us all as we begin a new secular year.

WILD 4 COMMUNITY!

Call Today For A
Complimentary Exam
(707) 575-0600

*I love my new smile
thanks Dr. B.
Kelli*

**BERNSTEIN
ORTHODONTIC
GROUP**
WILD 4 SMILES

Conveniently Located In Santa Rosa
Also located in Windsor and Petaluma

Proudly serving Beth Ami families since 2003, check us out: www.bernsteinbraces.com

*"...the best breakfast
& lunch joint around."*
Jeff Cox
Santa Rosa Magazine

Dierk's Parkside Cafe
404 Santa Rosa Avenue
Santa Rosa, CA 95404
707/573-5955

Mark Dierkhising and Karen Brodsky, Owners

Please support our Advertisers
Contact Karen,
newsletter@bethamir.org, for details
about advertising in the Shofar.
Thank you!



Carolyn Metz
Ecogreen Certified Agent
DRE # 01488014
707-537-2369 - Direct
707-481-3390 - Cell
cmetz@fhallen.com
www.carolynmetz.com




460 Mission Blvd., Santa Rosa, CA 95409



Joel Nelson
PRODUCTIONS

SOCIAL & CORPORATE EVENT PRODUCTION
DJ'S | BANDS | SPECIALTY ENTERTAINMENT

www.joelnelson.com



earth
in
upheaval
e. i. u., inc.

outstanding service
and repair for your vehicle

on the web at:
earthinupheavalautorepair.com

an unusual name
with
unusual excellence

1970-2013
Forty-Three Years Of Quality Service
We know and are equipped to work on:

Acura	Lexus	Volvo
Audi	Mazda	VW
BMW	Mercedes-Benz	Domestics
Honda	Mini	Hybrids
Hyundai	Nissan	
Infiniti	Subaru	
Kia	Toyota	

5300 Sebastopol Rd.
Santa Rosa, CA 95407

Open Monday - Saturday
rental cars available
earthin@sonic.net

Richard Kahn (707) 523-3777


ALEF isn't enough
BET isn't tough

Study Modern Hebrew from
the source with a native Israeli.
All levels. The easy way.
Prayers, Chanting Torah Tropes
call: Ahuva Simon-Sa'ar
545-2454

א
ב
ג
ד
ה
ו
ז
ח
ט

Larry Gregg
Bujinkan Santa Rosa Dojo

Traditional Martial Arts -
Self Defense
phone: 707 481-7370
email: srbd@att.net
web: santarosabujinkan.com





WHAT'S COOKING WITH THE KITCHEN COMMITTEE?

Jeffrey & Janet Stein-Larson,
Co-Chairs, Kitchen Committee

In a brilliant display of courage, ingenuity, and perseverance, **Richard Kahn's** latke teams made over 900 latkes during the two frantic evenings of December 5 and 6. The results were eaten on December 10 and, everyone will agree, they were terrific! Now that the latkes are gone, it's time to slow down for the winter right? Of course not! Tu B'Shevat is January 26. We mark the day of Tu B'Shevat by eating fruit, particularly from the kinds that are singled out by the Torah in its praise of the bounty of the Holy Land: grapes, figs, pomegranates, olives and dates. Then comes Purim which is just around the corner, starting on the evening of February 24. On Purim we are commanded to 'eat, drink, and be merry' and we are also commanded to send out gifts of food and drink and charity. That means we need to think about Hamentashen (last year we made over 1000 of them), so heads up for all of you who volunteered for baking last year. As the cycle of holidays continue round the year, so does the cooking.

Thank yous

We've recently received a **chinois** from Ahuva Simon Sa'ar that we put to good use. Did you enjoy the Beth Ami applesauce made from the apples left over from Rosh Hashanah and served with latkes during our Chanukah celebration?

Have you noticed the new **tablecloths** that are being used during the potlucks and other special events? Those are due to a donation from Chavurah Bet.

Q: There is a special mitzvah that we will be celebrating and we want to have a special potluck for that mitzvah. What do we need to do?

A: We all enjoy our potlucks and our congregation is comprised of some who keep kosher and others who do not. We want those who do keep kosher to feel comfortable eating at Congregation Beth Ami, and we also want those who do not keep kosher to be able to bring food to share. That is why the **Potluck Food Guidelines Pamphlet** and the **Shabbat Potluck Recipe Pamphlet** were put together by the kitchen committee. So first, you should check out those pamphlets for things you can bring from home or packaged items you may bring from the store. However, if there is something special you wish to make that is not allowed by our potluck guidelines, then maybe you can make that item in our Beth Ami kitchen.



However, if there is something special you wish to make that is not allowed by our potluck guidelines, then maybe you can make that item in our Beth Ami kitchen.

What you need to do

A. Reserve the kitchen for cooking.

The best way to do this is by contacting the Beth Ami Office. They have the definitive calendar for our synagogue. The calendar by the kitchen door is a guide, it is not the final calendar. You do need to plan well in advance for this reservation because besides reserving the kitchen you also need have a mashgiach present while you are in the kitchen.



B. After you have made your reservations for the kitchen, then have the office contact the kitchen committee so that arrangements can be made for a **mashgiach volunteer** who will be present while you are preparing your food. The mashgiach ensures Beth Ami's kashrut guidelines are followed by checking what you are using (remember that if packaged items are marked with a kosher symbol and are pareve or dairy, you are fine); observes the cooking procedures to insure that kashrut standards are kept; safety is maintained; answers questions (commercial appliances are different than ones in a regular kitchen); locks and secures the kitchen.

C. You and your assistants will be in charge of making arrangements for the food purchases, preparation, set-up, and clean up of the kitchen. If food must be dropped off in the kitchen for storage, arrangements need to be made for that well. The volunteer mashgiach will see to it that the kitchen is safely used, secured and maintained according to the Kashrut rules observed by Beth Ami, if the volunteer mashgiach chooses to assist you in any other way, it is secondary to their primary responsibility.

D. If you have any questions, or you don't have the current **Potluck Food Guidelines**, **Shabbat Potluck Recipe Pamphlet**, or **Guidelines for Kitchen Use**, you can get them by contacting the Beth Ami office at office@bethamir.org, or us at JSL2602@sonic.net.



BLESSINGS GALORE

Barbara Tomin, VP of Youth and Education

Great students, great parents, great teachers, great curriculum

That's our 6-7 grade Beth Ami Religious School Class this year! Be prepared for five wonderful Bat/Bar Mitzvahs on the bimah in 2013: Josh Simkovitz, 2/16, Noa Landau-Camarillo, 4/27, Daniel Sherman, 7/20, Moriah Rosenthal, 7/27 and Nick Alexander, 8/17. Beyond the above: 2014 Sammy Dzik and more to come! We are in simcha heaven.

What's so great?!

This year our 6-7 grade class has the privilege of studying twice a week with Rabbi Miller. And I mean studying—they have been learning to read and translate Torah in HEBREW and English and interpret meaning for those times as well as now.

Susan Miller, the rebbetzin, teaches a fascinating class on Sunday mornings "Israel Through the Eyes of the Israeli Prime Ministers." An incident, challenge or decision made by a Prime Minister is studied and discussed from several view points: the Torah, world relevance today, and the students' lives. Class divides in to debate teams and defends or opposes the action. Quite challenging and stimulating. Everyone's engaged!

Amanda Servin, along with **Tamar Landau** are our Tefillah teachers working twice a week with the class offering personal instruction and beautiful voices.

If that is not great enough—**Roy Camarillo**, school administrator and artist is working with the students on their B'nai Mitzvah Project which is curriculum inspired and will be a gift to the congregation—that's all I can say now!! You will be apprised of the upcoming surprise congregational gift presentation to be offered in February! You do not want to miss this!

Last, but definitely not least, are our great supportive and caring parents who bring their children twice a week, come to meetings, offer constructive feedback, state their needs and are working together on their bat/bar mitzvahs.

We are thrilled, excited and inspired!

Congregation Beth Ami is very alive and very well.



SOCIAL ACTION SCOOP

Lyla Nathan

Social Action Committee

For those of you who were looking for my column last month I have to confess that I am slightly technologically challenged, and as I saved the draft for review, I forgot to press send. So just a brief recap of the last few months.

The Social Action Committee has been very active especially in the arena of doing mitzvot around the community and within the Beth Ami Community. We joined with Congregation Shomrei Torah (CST) on their winter clothes drive for people who go to Elisha's Food Pantry. I am proud to report that our congregation was very generous in providing over three carloads of gently used winter coats, hats, scarfs and blankets etc. to those in need this winter season. Great job everyone.

We have continued to volunteer at the Redwood Empire Food Bank. We had a successful evening event in late November with more than 15 volunteers. Thanks to all. As I write we have two planned dates to finish this year. We have new people helping every time. It is a lot of fun and it is a wonderful community builder. Also, the people at the food bank remind us each time how it is the volunteers who make the place run as they have a very small staff. We usually work in the mornings from 10:00 to 12:00 packing fruit or vegetables. It is not strenuous work. Please think about joining us.

The Soup Sisters are alive and well. We have a wonderful vegetable soup waiting for those who need a little TLC. **Cheryle Stern Miller** has volunteered to coordinate the delivery. So if you know someone who would enjoy the soup please give her a call at 537-7798 or call Lizzie in the office, 360-3000. We all love getting together, cutting veggies and catching up. Thanks to **Susan Miller** for organizing the soup making and for **Tish** who is always there as our mashgiach.

We are planning more events with CST as it is our goal to have more shared activities with our sister congregations. We were asked to co-sponsor their Second Annual Social Action Film festival. See the flyer on page 19.

Another goal of our committee, as well as the overriding goal of Beth Ami is to "welcome the stranger" in concrete ways, not just in words. We have some exciting ideas percolating and I will get back with them soon.

We had a wonderful Chanukah meeting at **Barbara Tomin's** where we lit menorahs, sang songs and ate a fabulous dinner. As I have said before this is a great committee and I thank all its members for working so hard to make Beth Ami a warmer and more giving synagogue.

Next meeting

Thursday, January 31 at Beth Ami

5:30 pm



GENEROUS CONTRIBUTIONS TO OUR CONGREGATION

The next time you are looking for a meaningful way to celebrate a joyous occasion, remember a loved one, or comfort a mourner, please consider a donation to Congregation Beth Ami. When you make a gift, a card is sent to the honoree or the family and your donation is proudly acknowledged in the Shofar. The minimum donation for each occasion is \$7.50. Congregation Beth Ami truly appreciates your support.

GENERAL FUND

Good health and Happy Birthday to Evey Abramowitz
Good health and Happy Anniversary to Ira & Ruth Rosenberg
Happy Birthday to Susanne Batzdorff
Happy Birthday to Ahuva Simon-Sa'ar and thank you for your fabulous cooking for shabbat potlucks
Happy Birthday to Rabbi George Schlesinger
Happy Birthday to Bonnie Boren and Happy Anniversary Phil & Bonnie. Bonnie, thank you for all you do for our community.
Happy Anniversary to Eli & Yona Miller and Happy Birthday Eli
Susan L. Miller

Congratulations to Betty Boyd & Eli Cohen on your new granddaughter

In memory of David Matzner's grandmother, Rebecca Sarah
"Blanche" Migden Brambir

Lillian Judd

In memory of Moises Rosenbach

John & Rhonda Rosenbach

In honor of being called to an aliyah

In memory of my mother, Anna Barta

Ivan Barta

In memory of Eli's mother, Mala Miller

Eli & Yona Miller

In memory of my uncle, Shupsel Glazer

Sarah Tyutinman

In honor of Justin & Shacharit Rosenthal

Richard & Shelley Fogel

In honor of President Obama's re-election

Richard Kahn & Anne Brown

Condolences and sympathy to the Matzner & Guttenberg families upon the passing of their beloved grandmother

Mazal Tov upon the arrival of their granddaughter, to Betty Boyd & Eli Cohen

Todah Robah to the Rosenthal family for bringing Dr. Nily

Shiryon as our Scholar-in-Residence

Todah Rabah to the Sutter family for bringing Rabbi Gabai to chant Torah

Todah Rabah to Betty Boyd & Eli Cohen for organizing food and activities for the Scholar-in-Residence weekend

Mazal Tov to Bill & Barry Friedman & Friedman's Home Improvement on your being named Outstanding Business Partner

Speedy recovery to Irwin Margolese

The Ballo Family

Mazal Tov to Phil Weil & Bonnie Boren upon the birth of Eliana Rose

The Glickman family

In memory of Charles Cohen

Betty Boyd & Eli Cohen

Misheberach for Marc Bernstein, our thoughts and prayers are with you

Judy Stern & Mel Decker

In memory of Michael Shapiro's father

In memory of Rabbi Schlesinger's mother

Congratulations to Bonnie Boren and Phil Weil on the birth of their granddaughter, Eliana

Sofya Pekker

In memory of Moshe Tzaig

Edith Newman

In memory of Moshe Tzaig

Ellen Brosbe

In memory of Isadore Wiesenthal

Natalie Friedman

In memory of Ethel's father, Jacob Goldman

Ethel & Stuart Schy

In memory of Nina & Lev Bakman

Sheyna Bakman

In memory of Moshe Tzaig

Andy & Nancy Fleming

Wishing good health to Marc Bernstein

Earl & Binese Goldberg

In memory of David Kerben

Claire Miller

MALK FUND

In memory of Bob Lauter

In memory of my father, Max Malk

In memory of Rabbi Schlesinger's beloved mother

For a complete & full recovery for Ira Rosenberg

In memory of my beloved mother, Miriam Malk

Mazal Tov to Barry Shapiro upon his passing the Bar exam

In memory of Sandy Nelson

Phyllis Shapiro

In memory of Sandy Nelson

Mazal Tov To Barry Shapiro for passing the bar!

Edith Newman

RABBI'S DISCRETIONARY FUND

In memory of Brucha Vilenskaya

In memory of my father, Samson Hochfield

Malvina Tsipan

In memory of Eugene Streifeld

Ricki Streifeld

In memory of Irving Judd

Lillian, Dennis, Anna, Daniel & Sarah Judd

RELIGIOUS SCHOOL FUND

In memory of Robin Kasimov's father, Robert Thomas

Richard Kahn & Anne Brown

USY FUND

In memory of my parents, Leon & Sabrina Pelta

Esther Pilch



JANUARY Yahrzeits

Secular dates correspond to Hebrew date of death.

Observance of yahrzeit begins at sundown the previous day.

All yahrzeits observed at Beth Ami.

Announced on January 4th and 5th

January 6	Ruth Susnow	Mother of Nancy Fleming
January 6	Jettie Rijnveldt	Stepsister of Mieneke Drake
January 7	Edith Volkmann	Sister of Evelyn Gurevitch
January 8	Henry Rosenblatt	Brother of Miriam Rubinstein
January 9	Raymond Lachman	Brother of Vivian Salmon
January 9	Mary Lastofka	Sister of Susy Raful
January 10	J.J. Fitzgibbons	Husband of Andrea Goodman
January 10	Joe Leavy	Brother-in-Law of Evey Abramowitz
January 10	Munja Pipkin	Mother of Sheyna Bakman
January 11	Ruth Baruch	Mother of Esther Baruch
January 11	Verne Paule	Husband of Raynore Paule

Announced on January 11th and 12th

January 12	Sylvia Bernstein	Aunt of Marc Bernstein
January 15	Charles Feingold	Father of Stanley Feingold
January 17	Elizabeth Carlson	Daughter of Sylvia Sucher
January 17	Lewis Magnus	Grandfather of Howard Glickman
January 17	David Myerfeld	Grandfather of Patty Bernstein
January 18	Erna Biberstein	Mother of Susanne Batzdorff
January 18	Eleanor Marshall	Mother of Carolyn Metz

Announced on January 18th and 19th

January 20	George Waldman	Grandfather of Barbara Whitaker
January 21	Simon Kovar	Grandfather of Dr. Gary Herzberg
January 22	Ira Hayes Rosenberg	Father of Ira Rosenberg
January 22	Nomi Lev-Yahm	Mother of Vivian Klein
January 25	Isac Rijnveld	Stepfather of Mieneke Drake

Announced on January 25th and 26th

January 26	Florence Alexander	Grandmother of Abraham Alexander
January 26	Mariya Antonovsky	Mother of Olga Pekker
January 26	Marguerite Connors	Mother of Tish Levee
January 28	Harry Schneider	Father of Evelyn Gurevitch
January 29	Mark Gurevitch	Brother of Evelyn Gurevitch
January 31	Sheyna Morse	Mother-in-law of Myrna Morse

January Birthdays

3	Margorie Ballo
5	Jack Wegman
6	Abraham Alexander
6	Mieneke Drake
9	Tish Levee
14	Fred Marvan
16	Lenore Holloway
16	Ricki Streitfeld
17	Paula Schlesinger
21	Michele Guttenberg
26	Karen Brodsky
28	Bill Friedman
28	Robert Raful
31	Stephen Nett

January Anniversaries

2	Abe & Laura Alexander
2	Mark Dierkhising & Karen Brodsky
7	Mort & Ruth Weiss
17	Jerry Lakins & Susan Miller
18	Mark & Jacqueline Sutter

SIMCHA BOARD TREE OF LIFE

Honor thy mother...also thy aunt, uncle, cousin, child, best friend, teacher with an engraved leaf on our Simcha Board commemorating any joyous occasion, bestowal of an honor, or cause for thanksgiving.

Leaf \$360
Small Stone \$1000
Large Stone \$2500



We also provide the opportunity for you to memorialize loved ones.

Yahrzeit Board

A plaque is \$450

Newest Simcha Leaf

Mazal Tov

Bill & Barry Friedman &
Friedman's Home Improvement Center
Outstanding Business Partner Award
November 6, 2012
Thank you for your generosity to the
community for 60+ years



FEBRUARY YAHRZEITS

Secular dates correspond to Hebrew date of death.

Observance of yahrzeit begins at sundown the previous day.

All yahrzeits observed at Beth Ami.

Announced on February 1st and 2nd

February 2	Quintin Brown	Father of Anne Brown
February 2	Freda Weiss	Mother of Mortimer Weiss
February 3	Erwin Batzdorf	Father of Alfred Batzdorff
February 3	Gershon Kahn	Father of David Kahn
February 4	Helen Keller	Mother of Ruth Weiss
February 4	Aaron Ramsey	Grandson of Mazie Miller
February 6	Zislye bas Mendel Laib	Mother-in-law of Evelyn Gurevitch
February 6	Sophie Shapiro	Mother-in-law of Phyllis Shapiro

Announced on February 8th and 9th

February 10	Yakov Zalessky	Brother of Sheyna Bakman
February 11	Irwin Inman	Father of Lee Feinstein
February 13	Sam Dzik	Father of Judith Dzik
February 13	Nathan Hartzman	Grandfather of Cheryle Miller
February 14	Mae Bernstein	Grandmother of Marc Bernstein
February 14	Aaron Spiegleman	Brother of Gail Negrin Uncle of Ronit Glickman

Announced on February 15th and 16th

February 16	Anna Branagan	Mother of Barbara Branagan
February 17	Sadie Seldowitz	Aunt of Susan Miller
February 18	Arthur Margolese	Brother of Irwin Margolese
February 18	Lydia Ross	Wife of Stuart Ross Sister of Henry Cohn
February 20	Sylvia Feingold	Mother of Stanley Feingold Aunt of Vivian Klein
February 20	Andor Taubner	Father of Susy Raful
February 21	Morris Bernstein	Grandfather of Marc Bernstein
February 21	Frieda Goldman	Mother of Ethel Schy
February 21	Fred Kaplan	Father of Sheri Kahn
February 22	Anatol Bakman	Son of Sheyna Bakman
February 22	Michael Brust	Father of Barbara McGee
February 22	Phillip Feingold	Brother of Stanley Feingold Father of Vivian Klein

Announced on February 22nd and 23rd

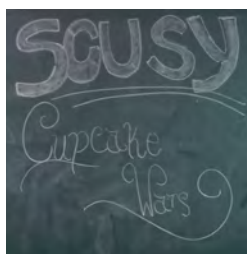
February 23	Saul Sampiere	Father of Etienne Sampiere
February 26	Simon Jimmy Sa'ar	Brother of Ahuva Simon-Sa'ar
February 27	Polly Boyd	Mother of Elizabeth Boyd
February 27	Hatskel Pipkin	Father of Sheyna Bakman
February 28	Bernard Bernstein	Father of Marc Bernstein
March 1	Henry Loew	Father of Danella Lubar

February Birthdays

2	Debbie Shapiro
3	Ellen Mundell
4	Arnold Drake
5	Eli Cohen
5	Hope Rambo
6	Julie Simkovitz
7	Rayme Shapiro
8	Ed Harman
10	Edith Friedman
10	Semyon Pekker
11	David Ballo
11	Andy Fleming
11	Betty Kale
14	Daryl Schloss
15	Barbara Branagan
15	Dalia Sheff
18	Sid Burwell
19	Alfred Batzdorff
20	Yona Miller
21	Elizabeth Boyd
21	Audrey Darby
23	Bernice Fox
23	Barbara McGee
27	Dorothy Gerstein
27	Michael Newman
28	Stuart Ross

February Anniversaries

2	Alan & Janice Shotkin
4	Harry & Edie Friedman
14	Davis & Diane Brown
20	Patty & Marc Bernstein
23	Irvin & Vivian Klein



USY News

Ashleigh Hayflich,
USY Advisor

SCUSY rounded out Hanukkah with a bang as we conducted our first (hopefully of many) cupcake wars. A collection of our Sr. and Jr. USYers and a few Kadimaniks came together at Beth Ami to show off their best cupcake decorating skills with a Hanukkah-themed twist. Although the competition was fierce, it was **Daniel Sherman** who came out on top as the very first winner of SCUSY Cupcake Wars!

Beth Ami's USY chapter has big plans for this year with limo scavenger hunts and car wash fundraisers on the agenda as well as much more. Bi-monthly study nights are also in SCUSY's future so that we can connect school life with Beth Ami and make USY a place where our teens can have a space of their own. A connection with Sonoma State Hillel is in the works to create a community of students for our teens to see how Jewish life carries on after high school. One of our main goals for the end of the year is to increase our membership enough to have a chapter board and create more leadership opportunities for Beth Ami's teens.

So if you have a teen now, have a child that will one day be a teen, or are just curious about SCUSY, don't hesitate to shoot me an email, scusy@bethamir.org. SCUSY's doors are always open!



NORTH BAY SPONSORING COMMITTEE

Ellen Mundell

Beth Ami's partnership with the North Bay Sponsoring Committee affords us the opportunity to get involved as individuals or as a congregation with issues of concern in our community.

We are invited to participate with another NBSC member, Resurrection Parish, as they work to support changes in Immigration policy locally and beyond. At the moment there is the opportunity to work with young Hispanic students to advise them on Obama's new policy for 'dreamers.' **The next Sonoma County Immigration Team Meeting will be held on Monday, January 7 at 7:00 pm at Resurrection Parish, (303 Stony Point Road, Santa Rosa).**

Health Care and Mental Health care are also topics for discussion and possible local actions. Getting involved will give you the opportunity to learn more about how Health Care Reform will play out in our community.

Please contact Ellen Mundell, emundell@sonic.net or Lyla Nathan, lylaila2@yahoo.com, if you would like more information about the specific projects of the NBSC and some additional dates for events and trainings.

Social Action Goes to the Movies...

Saturday, January 19

"Hiding and Seeking: Faith and Tolerance After the Holocaust"



A POWERFUL AND MOVING STORY of three generations of a Jewish family who discover the Polish couple that many years earlier had risked it all to hide their family from the Nazis. A deeply spiritual post-Holocaust road movie.

This film is co-sponsored by the Sonoma County Jewish Family & Children's Services.

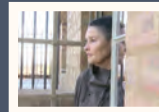
Saturday, February 9 "Crime After Crime"



A RIVETING JOURNEY of two lawyers striving for justice for a woman of indomitable spirit wrongfully in prison for decades. It all began with a brutal domestic violence case.

This film is co-sponsored by the Social Advocates for Justice of the Unitarian Universalist Congregation of Santa Rosa.

Saturday, March 9 "One Day After Peace"



COULD YOU FORGIVE SOMEONE who murdered your child? A bereaved mother-turned-peace activist, looks for solutions to the Israeli-Palestinian conflict after her son is killed by a sniper.

This movie only will begin at 7:15 PM.

Where: Congregation Shomrei Torah
2600 Bennett Valley Road, Santa Rosa
707/578-5519

Time: 7:00 PM • No admission fee, but donations are welcome
Refreshments will be served

Co-sponsored by the Social Action Committees of
Congregation Shomrei Torah and Congregation Beth Ami





SHABBAT DINNER RSVP

SHABBAT DINNER, 6 PM

☐ Friday, January 4 - **CHICKEN DINNER!**

☐ Friday, February 1

of Beth Ami Member Adults _____ @ \$18 = _____

of Non-member Adults _____ @ \$22 = _____

of Youth: (ages 5-12) _____ @ \$9 = _____

Please return payment and forms to:

Congregation Beth Ami,
4676 Mayette Avenue
Santa Rosa, CA 95405
707/360-3000 phone

Name: _____

Phone: _____

I want to volunteer for (indicate which event)

Total amount enclosed _____

☐ Check

☐ Visa/MC

Credit Card # _____

Expiration Date ____ / ____

Billing Zipcode _____



SCHY

Leanne Schy
Graphic Design
& Copywriting
1145 Murray Ct.
Santa Rosa,
California 95404
707-528-4874
LSchy@Sonic.net

Wine Country Kosher
...still trendy after 3000 years



MODERN • GOURMET • KOSHER

- Flavors of the Wine Country
- International Jewish Cuisine

Andrea Nett
707/206-8686

CATERING

We specialize in B'nei Mitzvah

winecountrykosher@sbcglobal.net

The Beth Ami Gift shop

located in the main office
is your source for things Jewish.

HOURS

Monday-Thursday 10 am-4 pm

Friday 10 am-2 pm

Most Thursdays until 6 pm

Sunday during Religious School
10 am -12 noon

Books

Judaica

Gifts

Mezuzahs

Jewelry

L'Chaim - To Life: An Introduction to Jewish Life, Belief and Practice

Join our Sonoma County Rabbis for a 13-session exploration of Jewish life, beliefs and practice. Visit www.jccsoco.org for more information. Presented by the JCC, Sonoma County.

JEWISH COMMUNITY CONTACTS



Hillel of Sonoma County

Lindsay Folkerth, 795-5464, www.sonomahillel.org

JCC, Sonoma County

Beth Goodman, 528-4222, www.jccsoco.org

Jewish Community Federation

Barbara Levinson, 568-6207, www.sfjcf.org

Jewish Community Free Clinic

Donna Waldman, 585-7780, www.jewishfreeclinic.org

Jewish Community Relations Council

Suzan Berns, 415/957-1551, www.jcrc.org

Jewish Family & Children's Services

Diana Klein, 571-8131, www.jfcs.org/sonoma-county



Congregation Beth Ami

4676 MAYETTE AVENUE, SANTA ROSA, CA 95405

ADDRESS SERVICE REQUESTED

January Shabbatot

Torah readings for January 5
PARSHAT SHEMOT: EX 4:18 – 6:1
Candle Lighting: 4:46 Havdalah: 5:58

Torah readings for January 12
PARSHAT VA'ERA: EX 8:16 – 9:35
ROSH CHODESH SHEVAT
Candle Lighting: 4:52 Havdalah: 5:54

Torah readings for January 19
PARSHAT BO: EX 12:29 – 13:16
Candle Lighting: 5:00 Havdalah: 6:01

Torah readings for January 26
PARSHAT B'SHALLACH: EX 14:26 – 17:16
SHABBAT SHIRAH
Candle Lighting: 5:08 Havdalah: 6:08

February Shabbatot

Torah readings for February 2
PARSHAT YITRO: EX 19:1 – 20:22
Candle Lighting: 5:16 Havdalah: 6:16

Torah readings for February 9
PARSHAT MISHPATIM: EX 23:20 – 24:18
SHABBAT SHEKALIM
Candle Lighting: 5:24 Havdalah: 6:23

Torah readings for February 16
Bar Mitzvah of Josh Simkovitz
PARSHAT T'RUMAH: EX 26:31 – 27:19
Candle Lighting: 5:31 Havdalah: 6:30

Torah readings for February 23
PARSHAT: TETZAVEH, EX 29:19 – 30:10
SHABBAT ZACHOR
Candle Lighting: 5:39 Havdalah: 6:38

MORNING MINYAN

Every Sunday at 8:30 am

Come meet and talk with President Arnold Drake
during informal "ask the president" sessions,
after most minyanim.